

OPPORTUNITY FOR **SALE OR LEASE**

1415 WILSHIRE

SANTA MONICA, CA 90403

YOUR NAME
HERE

MATTHEWSTM
REAL ESTATE INVESTMENT SERVICES

WESTMAC
Commercial Brokerage Company

1415 WILSHIRE



FOR SALE **INFORMATION**

T.C. MACKER, CCIM

President
310.966.4352
tcmacker@westmac.com
DRE# 01232033

WOODY COOK

Associate
310.966.4383
cook@westmac.com
DRE# 02072494

WESTMAC COMMERCIAL BROKERAGE COMPANY

1515 S. Sepulveda Boulevard
Los Angeles, CA 90025
www.westmac.com
Company DRE# 01096973

FOR LEASE **INFORMATION**

MICHAEL PAKRAVAN

FVP & National Director
310.919.5737
michael.pakravan@matthews.com
DRE# 01706065

ALEC TORGAN

Associate
310.919.5799
alec.torgan@matthews.com
DRE# 02120321

MATTHEWS REAL ESTATE INVESTMENT SERVICES

2321 Rosecrans Avenue, Suite 1225
El Segundo, CA 90245
www.matthews.com
Company DRE# 02168060

CLICK OR SCAN



FOR AERIAL VIDEO

WESTMAC

Commercial Brokerage Company

MATTHEWS
REAL ESTATE INVESTMENT SERVICES

©2024 WESTMAC Commercial Brokerage Company. All Rights Reserved. WESTMAC Commercial Brokerage fully supports the principles of the Equal Opportunity Act. WESTMAC Commercial Brokerage Company and the WESTMAC Commercial Brokerage Company logo are registered service marks owned by WESTMAC Commercial Brokerage Company and may not be reproduced by any means or in any form whatsoever without written permission.

EXECUTIVE SUMMARY

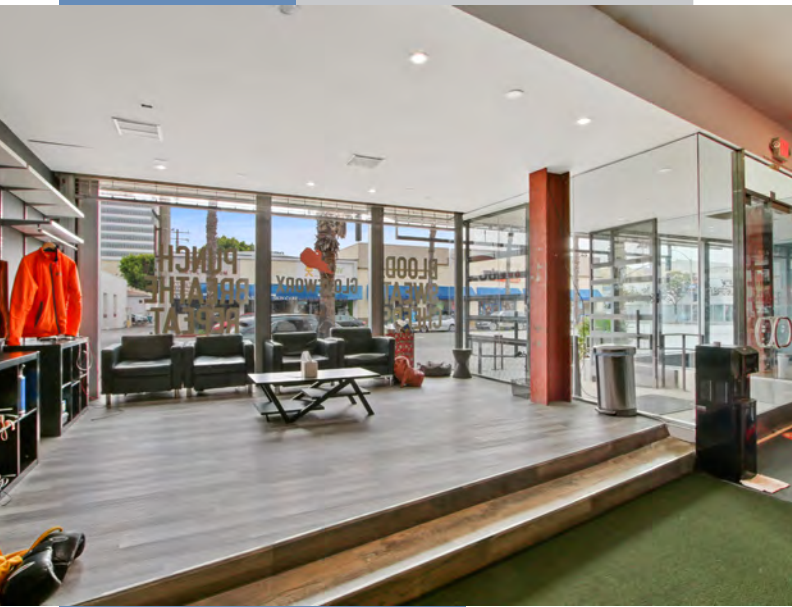
WESTMAC Commercial Brokerage Company and Matthews Real Estate Investment Services are pleased to present the opportunity to acquire or lease 1415 Wilshire Boulevard in Santa Monica, California, retail property located along highly trafficked Wilshire Boulevard, just east of 14th Street. The Property is approximately one (1) mile from Downtown Santa Monica and twenty (20) minutes from Los Angeles International Airport.

Built in 1930, 1415 Wilshire Boulevard is approximately 4,878 square feet of building situated on approximately 5,000 square feet of land. The Property falls under Santa Monica's MUB (Mixed Use Boulevard) zoning within the highly affluent and densely populated Wilshire-Montana neighborhood, where median household income is estimated at \$113,000 within a one-mile radius, and average home valued over \$1 million.

1415 Wilshire Boulevard is walking distance to an abundance of retailers, including Vons, Rite Aid, Bank of America, Santa Monica UCLA Hospital, and many more. It is a 14-minute walk (0.6 mi.) from the Metro E Line (Expo) at the 17th Street / SMC Station stop and features a Walk Score of 92 (Walker's Paradise).

The property will be delivered vacant making it an excellent opportunity for an owner-user or operator looking to make their mark in Santa Monica.





SALE PRICE: \$3,500,000

LEASE RATE: \$4.50 PSF NNN (\$1.00 PSF)

PROPERTY PROFILE

ADDRESS: 1415 Wilshire Blvd., Santa Monica, CA 90403

APN: 4281-011-026

BUILDING SIZE: ± 4,878 square feet (total rentable area)

LAND SIZE: ± 5,000 square feet

TYPE / USE: Retail

BUILT: 1930

ZONING: MUB (Mixed-Use Boulevard)

STORIES: One (1)

TENANCY: Single (Building can be divisible by two)

OCCUPANCY: Property will be delivered vacant

FRONTAGE: 50' along Wilshire Boulevard

PARKING: No dedicated (ample metered street parking along Wilshire & a city metered lot across the street)



**PUBLIC PARKING
±50 STALLS**

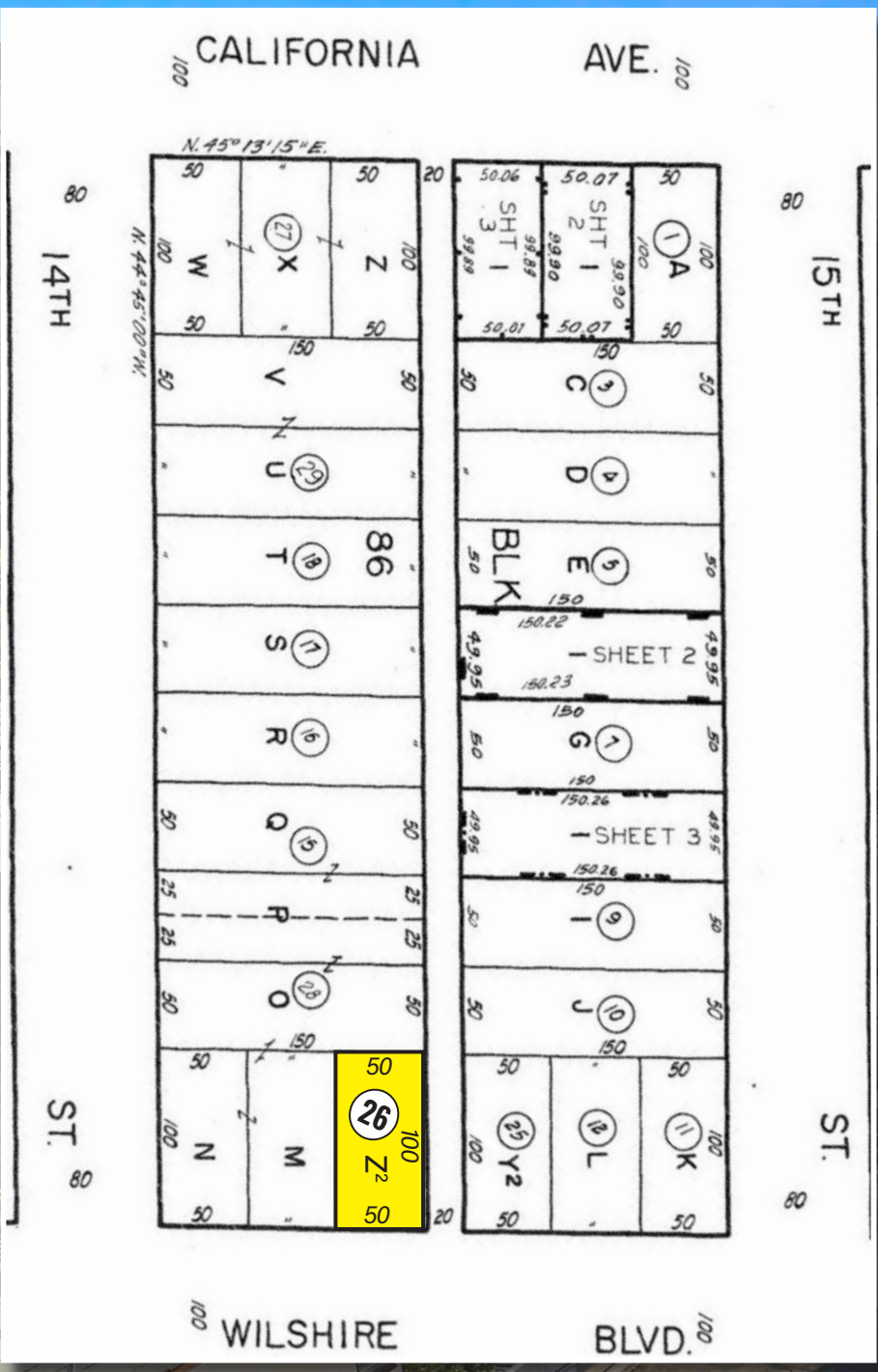
SUBJECT PROPERTY

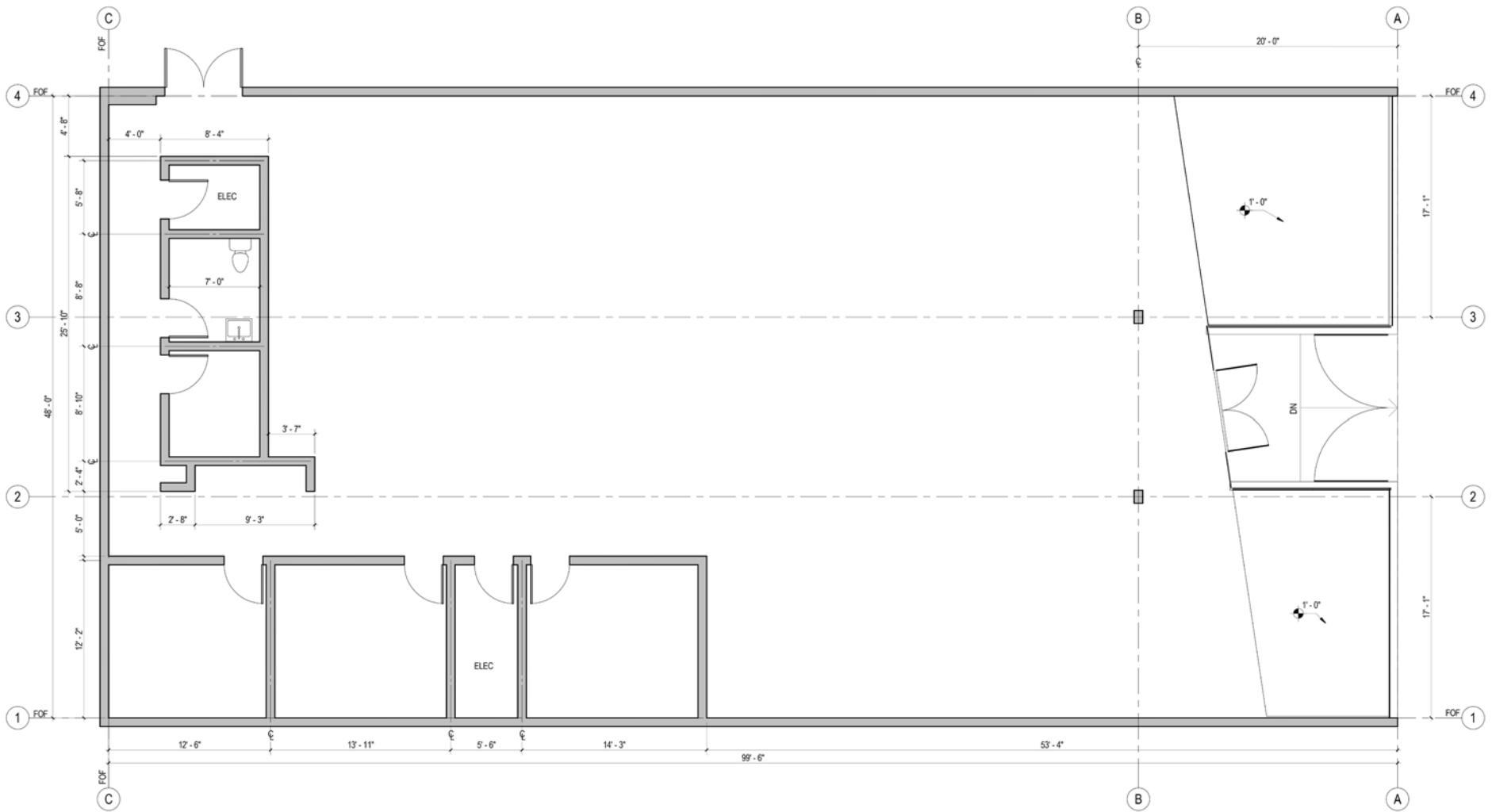
PROPERTY HIGHLIGHTS

- **Excellent, Infill Santa Monica Location** – Strategic retail location within the dense, residential community of Wilshire-Montana, comprised of high-income levels and strong purchasing power (the median household income is \pm \$113,000 within a 1-mile radius).
- **High Traffic Retail Corridor** – Located in the heart of Santa Monica, this location benefits from tremendous vehicle traffic visibility along Wilshire Boulevard, just east of 14th Street (\pm 28,000 cars per day).
- **Excellent Westside Location with Silicon Beach Drivers** – 1 mile from Downtown Santa Monica and the Third Street Promenade, Southern California's premiere shopping/dining/entertainment complex; and 1.5 miles from Santa Monica's Media District, where tech and media giants, including Amazon, Google, Lionsgate, Hulu, Bad Robot, Universal Music Group, and many others, have offices.
- **Ample Area Amenities** – The property is walking distance to dozens of immediate retailers, including: Vons, Rite Aid, US Bank, UCLA Santa Monica Hospital, Dunkin', Bank of America, Rustic Canyon, Ulta Beauty, Starbucks, La Monarca Bakery & Café, Santa Monica Pizza Kitchen, and many more. 92 (Walker's Paradise).



PARCEL MAP





SITE PLAN

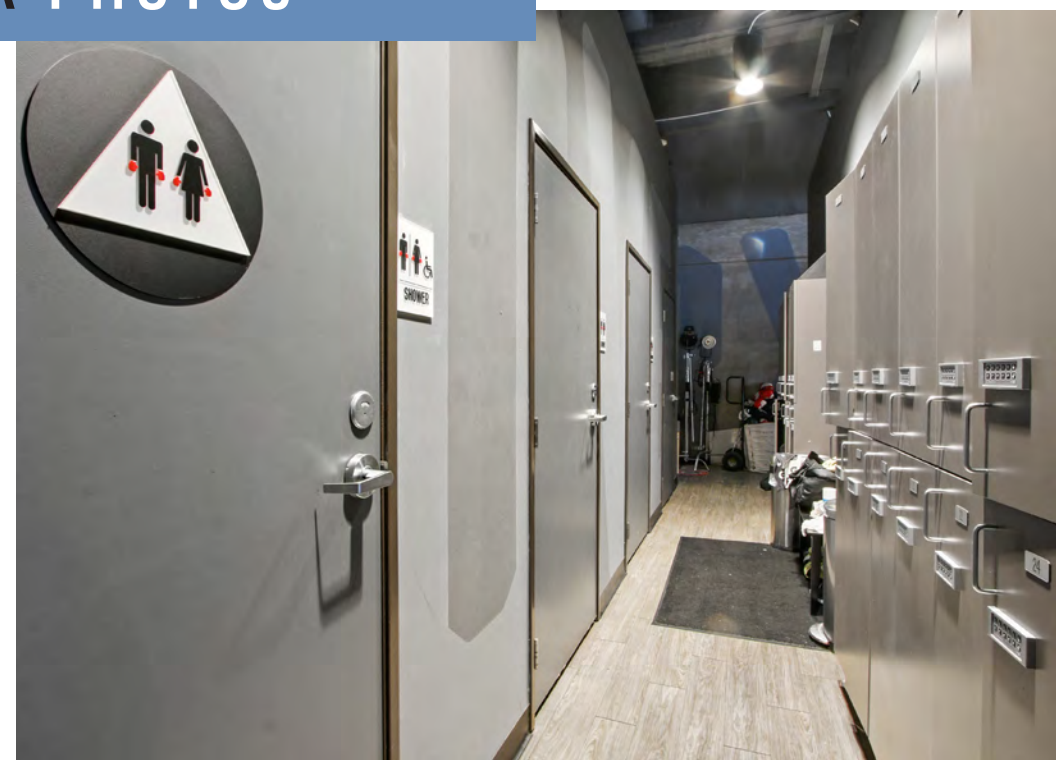
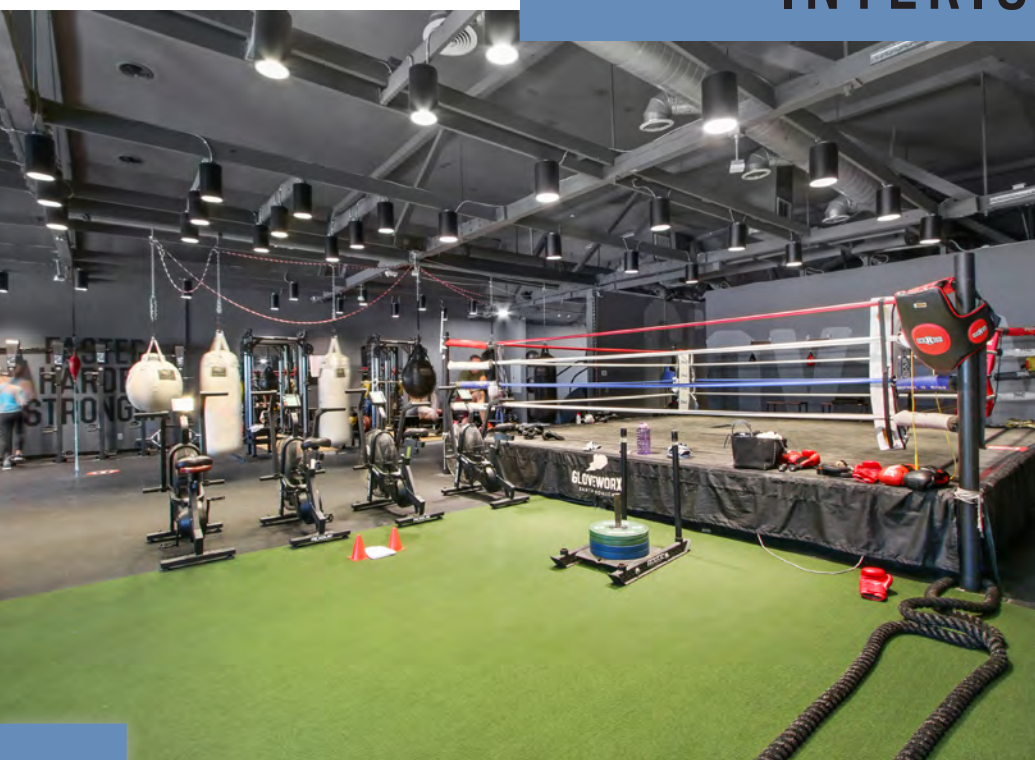


INTERIOR PHOTOS



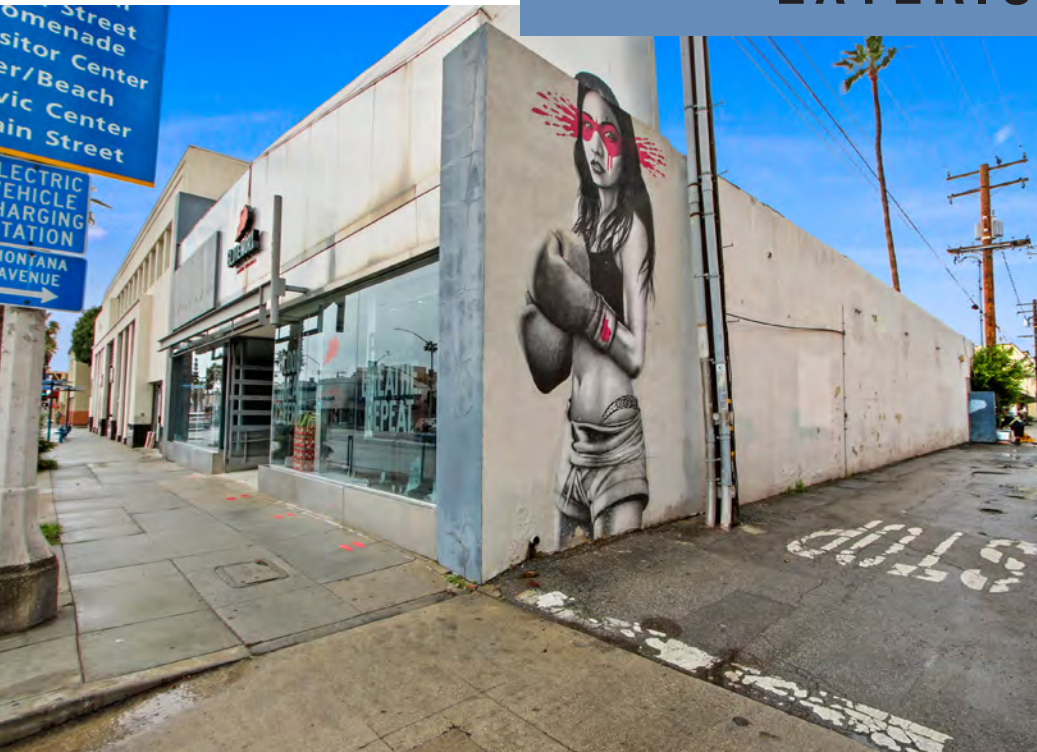


INTERIOR PHOTOS



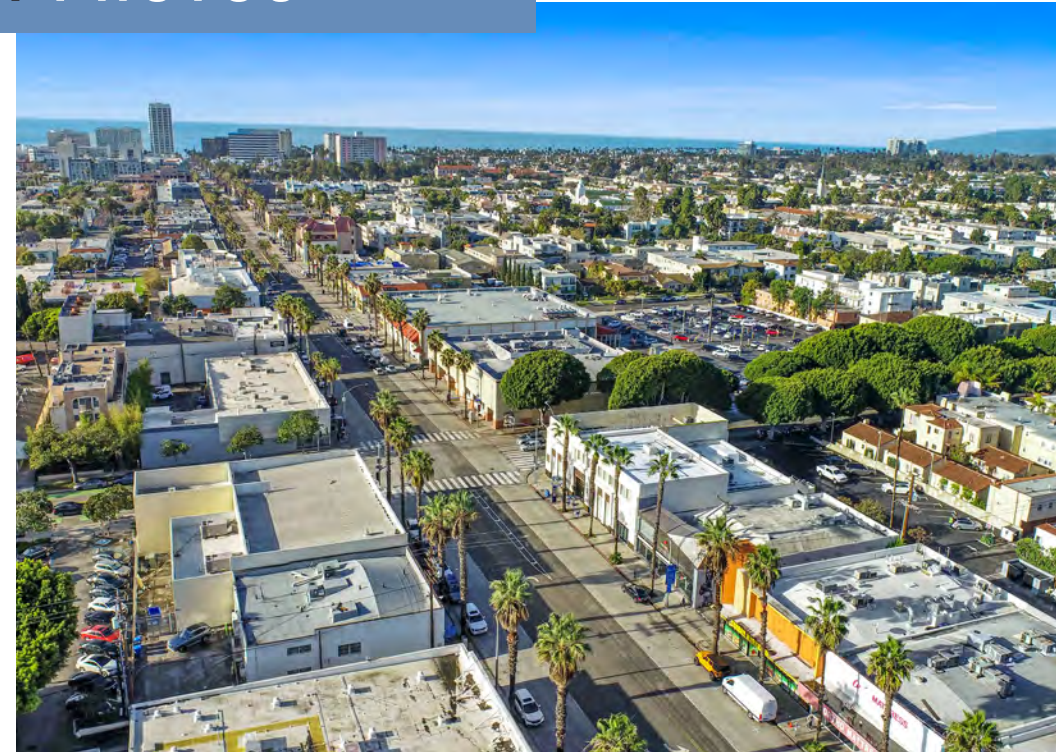


EXTERIOR PHOTOS



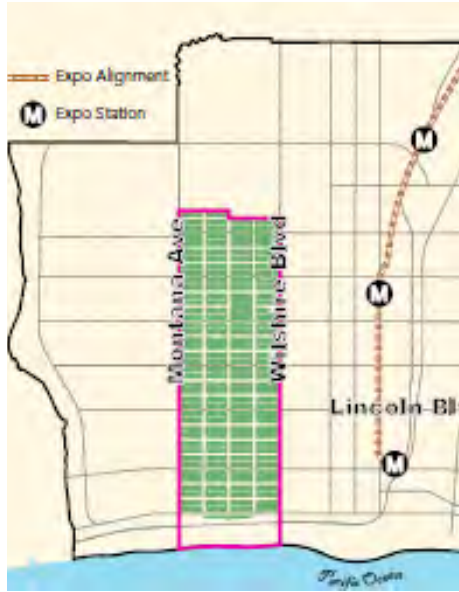


EXTERIOR PHOTOS





AREA OVERVIEW



More than 7 million visitors a year come to Santa Monica because it is a renowned beach city and close to other Los Angeles attractions. Santa Monica is known as a walkable and bike-friendly town, so it's easy to get around and experience world class shopping, dining, and entertainment. Downtown Santa Monica is home to the Santa Monica Pier, Third Street Promenade, Palisades Park and Santa Monica beach.

The Property is located in Santa Monica's Wilshire-Montana neighborhood, the City's largest multifamily neighborhood conveniently nestled between the commercial corridors of Montana Avenue to the north, 21st Street to the east, Wilshire Boulevard to the south, and Ocean Avenue to the west. The neighborhood includes many of the City's memorable cultural, architectural, and geographical characteristics—from the bluffs of Palisades Park to the palm tree-lined avenues and the grand apartment hotels dating back to the 1920s and 1930s. The interplay between West Wilshire's residential buildings and the idyllic Southern California outdoor environment makes the neighborhood a highly desirable place to live.

SANTA MONICA IS A VIBRANT BEACH-SIDE CITY BOASTING NATURAL BEAUTY & UNPARALLELED LIVING



PACIFIC PARK



THIRD ST. PROMENADE



SANTA MONICA PIER



PALISADES PARK

SILICON BEACH

Santa Monica has emerged as the center of the technology, entertainment, and digital information industries in Southern California. Santa Monica properties achieve among the strongest pricing in all of Los Angeles as well as the nation. The area's supply constraints, high-profile tenants, unique beach lifestyle, and top-dollar rents are attractive to many capital sources.

The region has attracted companies ranging from startups to established tech giants. Recognizable names like Amazon, Google, and Facebook, are neighbors with buzzy startups, like Postmates and Fair.

Here are just some of the Silicon Beach companies located in Santa Monica:

facebook



Google



hulu

amazon

ACTIVISION



LIONSGATE



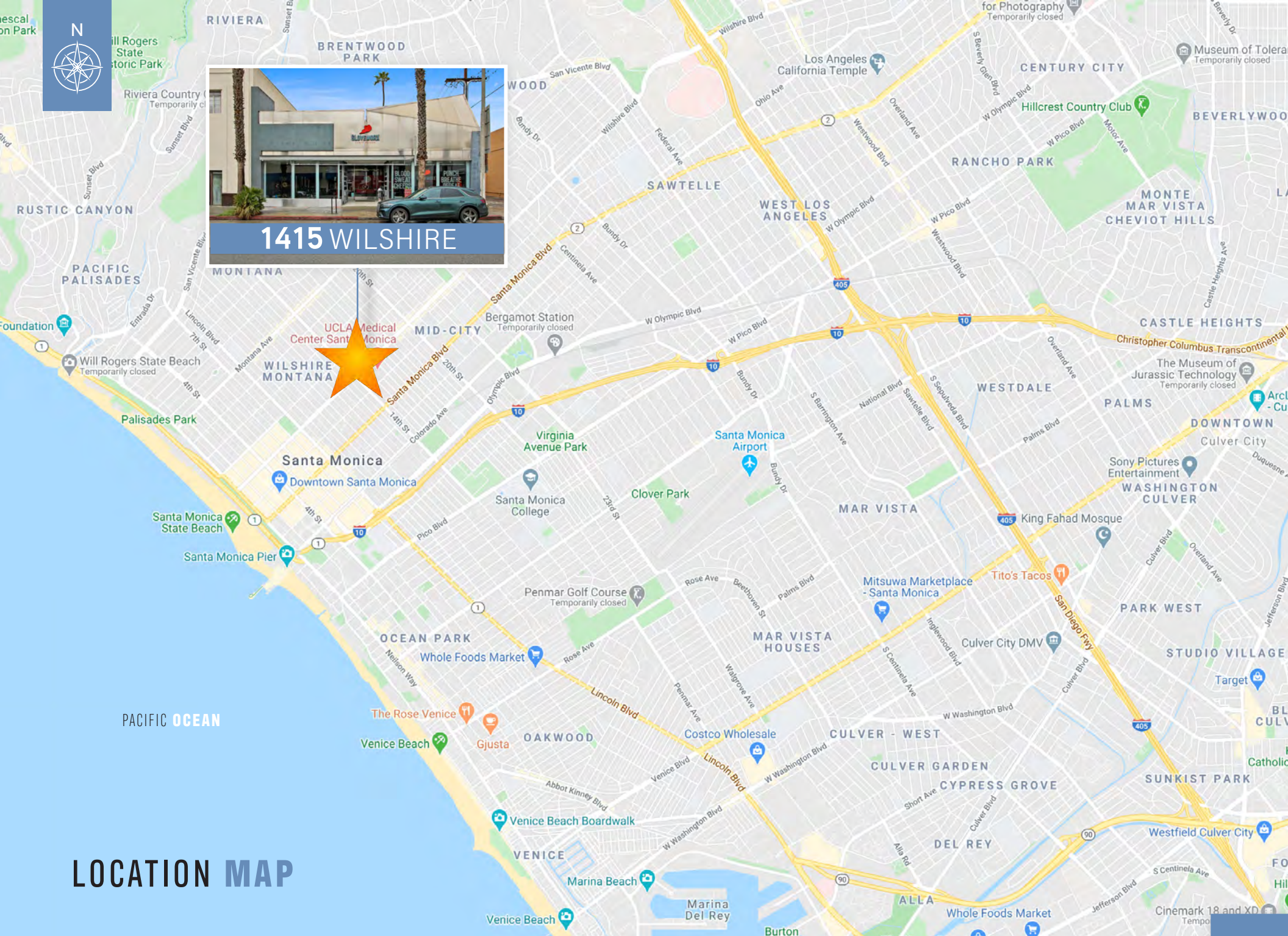
ZipRecruiter

GoodRx

SKYDANCE
MEDIA

DEMOGRAPHICS: 1-3-5 MILE RADIUS

POPULATION	1-Mile	3-Mile	5-Mile
Total Population	42,296	194,340	433,390
Median Age	43.4	43	41.4
Bachelor's Degree	65%	64%	62%
HOUSEHOLD	1-Mile	3-Mile	5-Mile
Total Households	22,738	96,152	201,778
Median Home Value	\$1,038,273	\$1,043,519	\$1,053,427
Owner Occupied	4,793	31,171	71,872
Renter Occupied	17,617	63,884	128,146
Average H.H. Income	\$140,345	\$142,589	\$137,335
Median H.H. Income	\$113,986	\$113,813	\$107,285
BUSINESS	1-Mile	3-Mile	5-Mile
Total Businesses	6,788	21,219	39,522
Total Employees	49,929	163,693	408,204
Total Consumer Spending	\$803.2M	\$3.6B	\$7.5B



1415 WILSHIRE

LOCATION MAP

AREA AMENITIES



SUBJECT PROPERTY

WILSHIRE BLVD

DISCLAIMER

This offering memorandum and related materials (including any renderings, illustrations, photos, videos, simulated views, graphic images, maps, or other visual depictions (collectively, the “Documents”)), are not intended to be nor shall be construed as an offer to sell or a solicitation of offers to buy the Property (whether prohibited by law or otherwise). The Documents are intended to be for general reference and informational purposes only (and are not intended to offer specific tax, investment, or legal advice of any kind). To the extent the documents contain “forward-looking statements”, such statements involve known and unknown risks, uncertainties, and other factors that may cause actual results to differ materially from the expectations expressed herein.

While the information contained herein is from sources deemed reliable, it has not been independently verified by WESTMAC Commercial Brokerage Company, Matthews Real Estate Investment Services, or Seller. This document is provided subject to errors, omissions and changes in the information (and there is no commitment or obligation to update such information) and is subject to modification or withdrawal. The contents herein are confidential and are not to be reproduced without the express written consent to Seller. Seller reserves the right to withdraw the Property being marketed at any time without notice, to reject all offers, and to accept any offer without regard to the relative price and terms of any other offer.

Prospective buyers shall be responsible for their costs and expenses of investigating the Property and all other expenses, professional or otherwise, incurred by them. Your sole and exclusive remedy for issues relating to the use of, or the reliance on, the documents shall be to discontinue using the information or material obtained. You agree that WESTMAC Commercial Brokerage Company, Matthews Real Estate Investment Services, and Seller shall not be liable for any damages relating to your use of, or reliance upon, the documents or any content therein (and hereby waive, disclaim and release such parties from any such damages).

Street
Promenade
Visitor Center
er/Beach
vic Center
in Street

ELECTRIC
VEHICLE
CHARGING
STATION
MONTANA
AVENUE
→





FOR MORE INFORMATION

T.C. MACKER, CCIM

President
310.966.4352
tcmacker@westmac.com
DRE# 01232033

WOODY COOK

Associate
310.966.4383
cook@westmac.com
DRE# 02072494

MICHAEL PAKRAVAN

FVP & National Director
310.919.5737
michael.pakravan@matthews.com
DRE# 01706065

ALEC TORGAN

Associate
310.919.5799
alec.torgan@matthews.com
DRE# 02120321

WESTMAC COMMERCIAL BROKERAGE COMPANY

1515 S. Sepulveda Boulevard
Los Angeles, CA 90025
www.westmac.com
Company DRE# 01096973

MATTHEWS REAL ESTATE INVESTMENT SERVICES

2321 Rosecrans Avenue, Suite 1225
El Segundo, CA 90245
www.matthews.com
Company DRE# 02168060