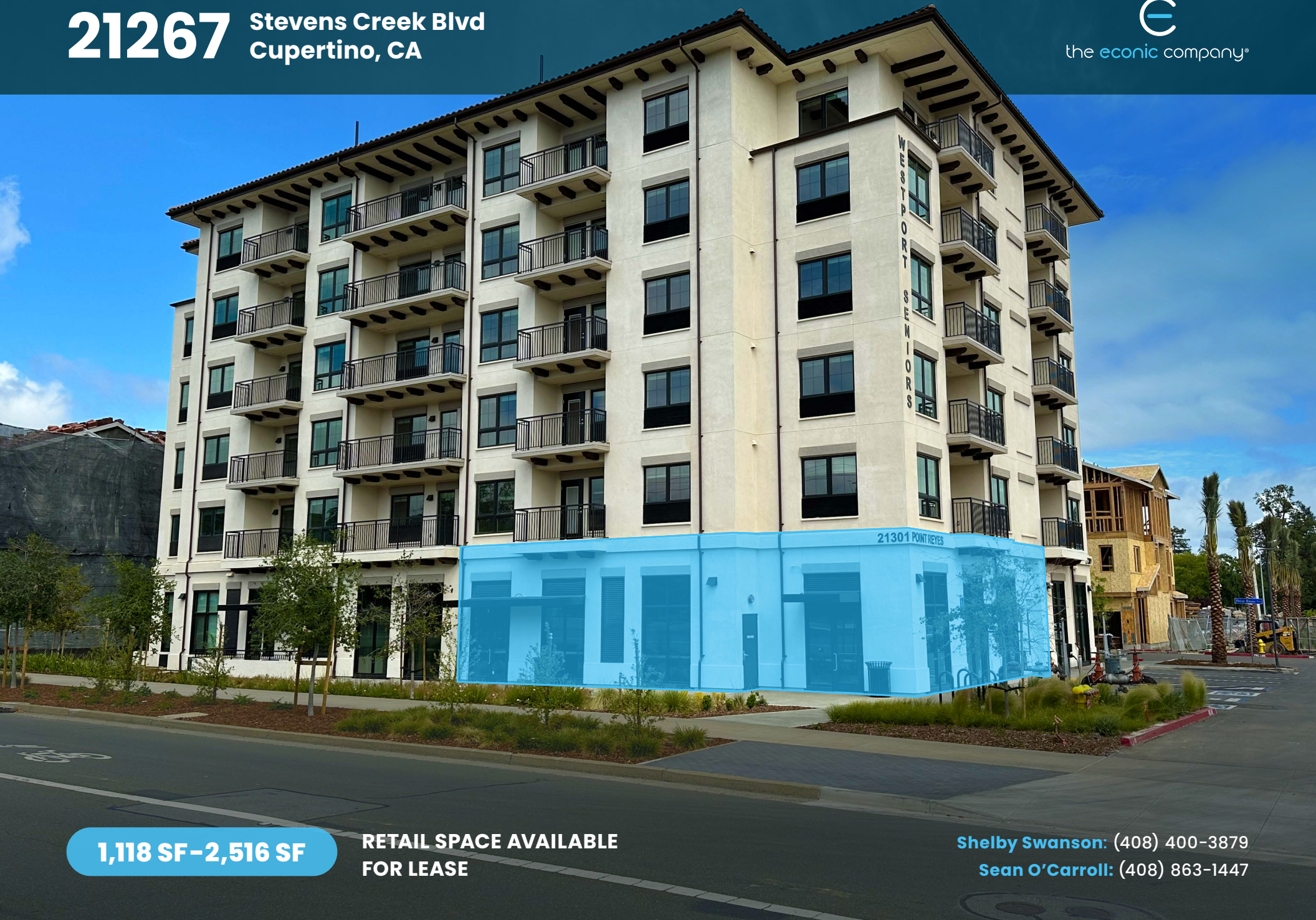


**21267** Stevens Creek Blvd  
Cupertino, CA



**1,118 SF - 2,516 SF**

**RETAIL SPACE AVAILABLE  
FOR LEASE**

**Shelby Swanson:** (408) 400-3879

**Sean O'Carroll:** (408) 863-1447



PROJECT

# Highlights



**Prime Location:** Situated on Stevens Creek Blvd (34,980 ADT) just off Hwy 85, the retail space at Westport Cupertino (294 housing units) has exceptional visibility and accessibility.



**Proximity to De Anza College:** Located directly across Stevens Creek Blvd from De Anza College, which has an enrollment of 16,335 students, this is the closest retail space to the campus.



**Flexible Retail Space:** The 2,516 square feet retail area is divisible to 1,398 and 1,118 square feet, allowing customization to fit your business needs.



**Affluent Customer Base:** Impressive average household income of \$260,737 and over 158,000 population, 134,000 daytime population within a 3-mile radius of the site.

**DEMOGRAPHICS**

	1 MILE	3 MILES	5 MILES
Population	20,405	158,843	430,712
Avg. HH Income	\$246,579	\$260,737	\$236,498
Daytime Population	23,352	138,174	391,686

**TRAFFIC COUNTS**

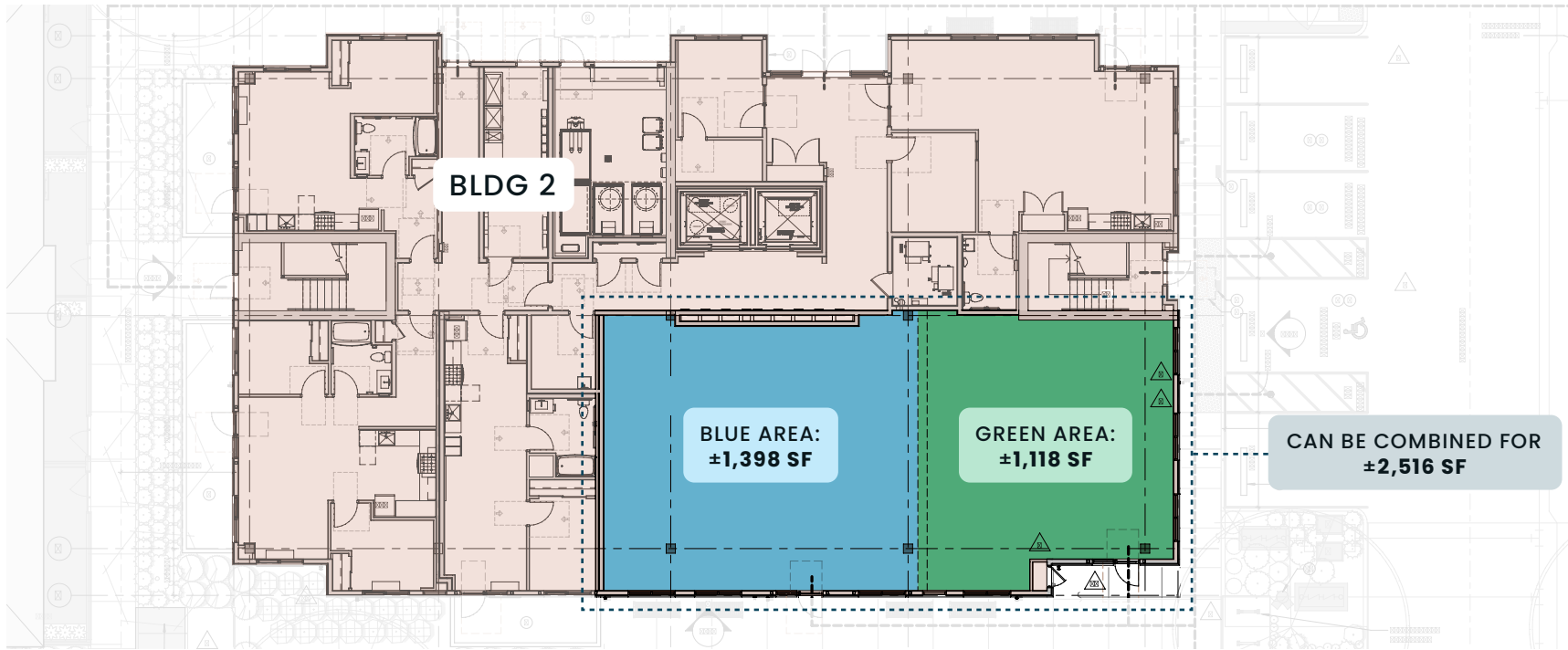
Source: Esri 2023

Stevens Creek Blvd	34,980 ADT
W Valley Fwy	122,900 ADT



PROPERTY

# Floor Plan



STEVENS CREEK BOULEVARD





MARKET  
**Aerial**





# 21267 Stevens Creek Blvd Cupertino, CA



**Shelby Swanson**

(408) 400-3879

sswanson@theeoniccompany.com

CaIDRE: 02075363

**Sean O'Carroll**

(408) 863-1447

socarroll@theeoniccompany.com

CaIDRE: 01058587



the eonic company®