

# Industrial Space for Lease

Cherry Lane Center 2

Laurel, Maryland



## Available Space:

14223

3,070 SF

22 ft ceiling height

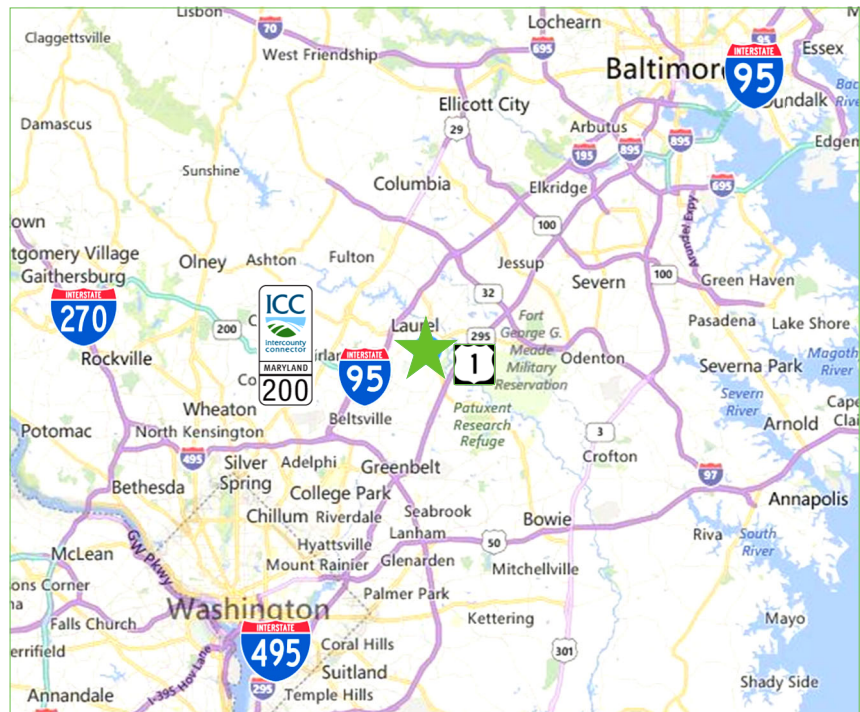
One overhead door

One loading dock

14201-14231 Cherry Lane Court · Laurel, MD • 44,302 SF - 1 Story

## Convenient to:

- ▶ Rte. 1/Baltimore Ave. (0.4 miles)
- ▶ Rte. 197/Laurel Bowie Rd. (0.6 miles)
- ▶ Rte. 198/Ft. Meade Rd. (1.4 miles)
- ▶ Rte. 200/ICC (2.6 miles)
- ▶ I-95 (3.2 miles)
- ▶ MD 295 (3.6 miles)
- ▶ Walking distance to Laurel Towne Centre
- ▶ 1.5 miles from Home Depot
- ▶ Less than 1 mile from Lowe's Home Improvement
- ▶ Numerous other shops & restaurant chains on Route 1 & Cherry Lane



## For Leasing Opportunities Contact:

Bobby Kravitz

Office: 301.795.1457

BKravitz@PromarkPartners.com

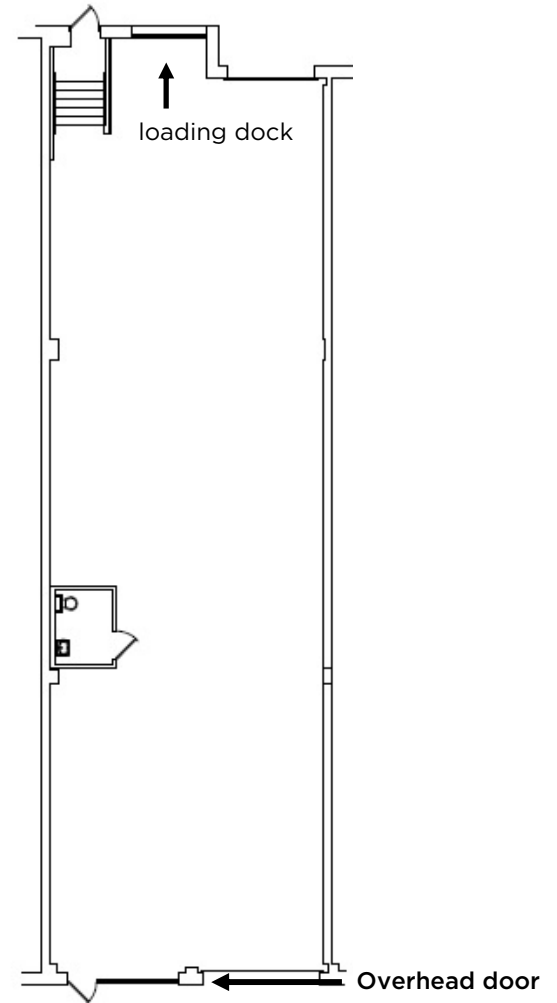


451 Hungerford Drive • Suite 700 • Rockville, MD 20850 301.795.1400 • [PromarkPartners.com](http://PromarkPartners.com)



Floor Plan • Site Plan  
14223 Cherry Lane Court  
Laurel, Maryland

3,070 SF



## PROPERTY HIGHLIGHTS

Parking: 2/1,000 SF leased

220 free surface parking spaces

Zoning: I-1 Zone (Light Industrial); PG County

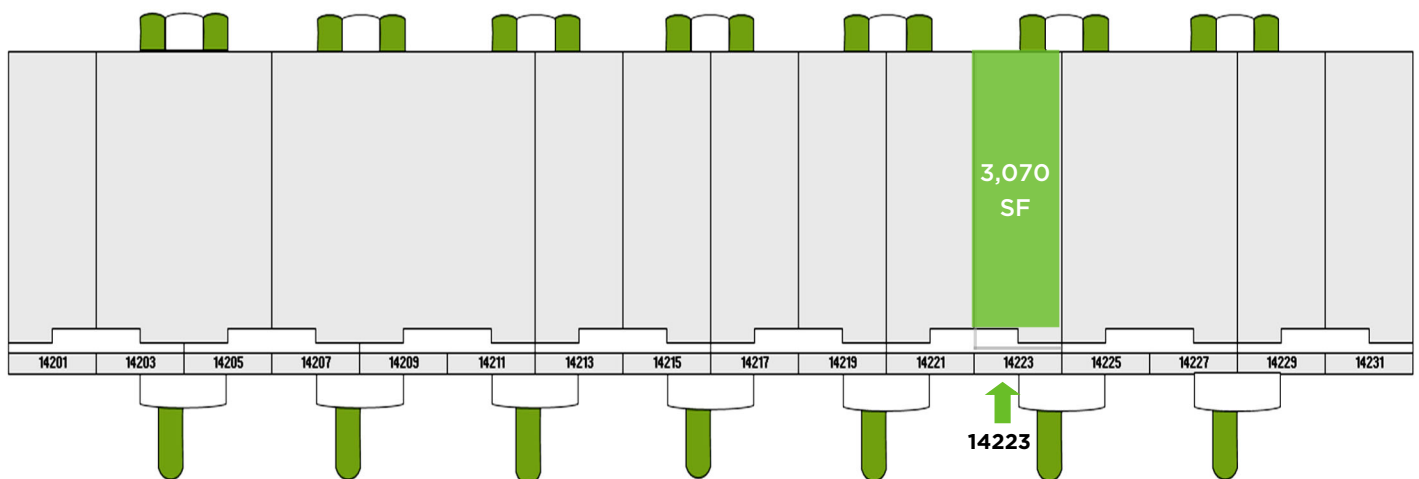
## TRANSPORTATION

COMMUTER RAIL

Laurel Commuter Rail (Camden Line) 1.7 mi

Laurel Racetrack Commuter Rail (Camden Line) 2.2 mi

**Walk Score®** 75



451 Hungerford Drive • Suite 700 • Rockville, MD 20850 301.795.1400 • [PromarkPartners.com](http://PromarkPartners.com)

The materials provided herein are for informational purposes only and are not intended to constitute an offer or solicitation. Although information contained herein is from sources deemed reliable, such information has not been verified and is submitted subject to errors, omissions, change of price, withdrawal or further change without notice.