

VACANT COMMERCIAL PARCEL

1561-1581 SW Gatlin Blvd, Port St. Lucie, FL 34953



FOR SALE



ALEX AYDELOTTE
Broker | Principal
O: 772.223.3646 C: 772.263.1130
E: alex@florida-commercial.net

.92 AC | Port St. Lucie, FL

309 SE Osceola Street #104 • Stuart, FL 34994 • 772.223.3646 • florida-commercial.net

©Florida Commercial 2021 • This offering is subject to errors, prior to sale/lease, withdrawal, or change in price, terms or conditions without notice.

EXECUTIVE SUMMARY

1561-1581 SW GATLIN BLVD, PORT ST. LUCIE, FL 34953 | VACANT COMMERCIAL PARCEL

SPECS

Parcel Size:	.92 Acres
Price:	\$795,000
Parcel Dimensions:	320' frontage x 125' depth
Land Use:	ROI - City of Port St. Lucie
Zoning:	Professional - City of Port St. Lucie

PROPERTY OVERVIEW

Hard-to-Find vacant Commercial Parcel on busy Gatlin Boulevard in Port St. Lucie! Located just east of I-95 and close to Tradition, this .92 Acre parcel has 320' of Frontage and is cleared and ready for construction of your next Business Location! Excellent Opportunity for Medical and Professional Office Uses that are in high demand to service the contiguous and very dense residential communities that keep expanding! Port St. Lucie is one of the Nation's Fastest Growing Cities and this is one of the few remaining Commercial Parcels on this Desirable Corridor.



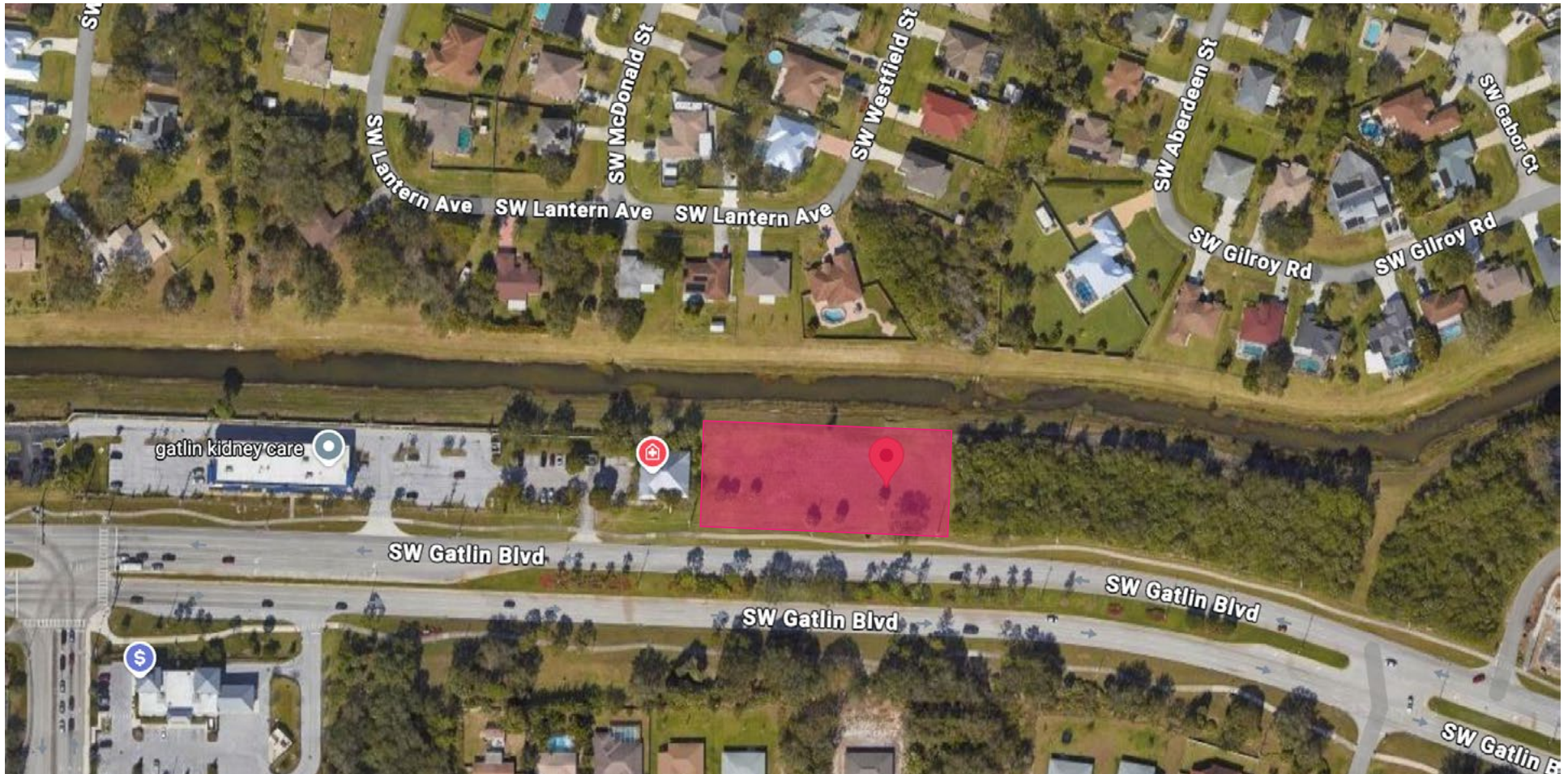
ALEX AYDELOTTE
Broker | Principal
O: 772.223.3646 C: 772.263.1130
E: alex@florida-commercial.net

.92 AC | **Port St. Lucie, FL**

MAP

1561-1581 SW GATLIN BLVD, PORT ST. LUCIE, FL 34953

VACANT COMMERCIAL PARCEL



ALEX AYDELOTTE
Broker | Principal
O: 772.223.3646 C: 772.263.1130
E: alex@florida-commercial.net

.92 AC | **Port St. Lucie, FL**

RETAIL MAP & REPORT

1561-1581 SW GATLIN BLVD, PORT ST. LUCIE, FL 34953

VACANT COMMERCIAL PARCEL



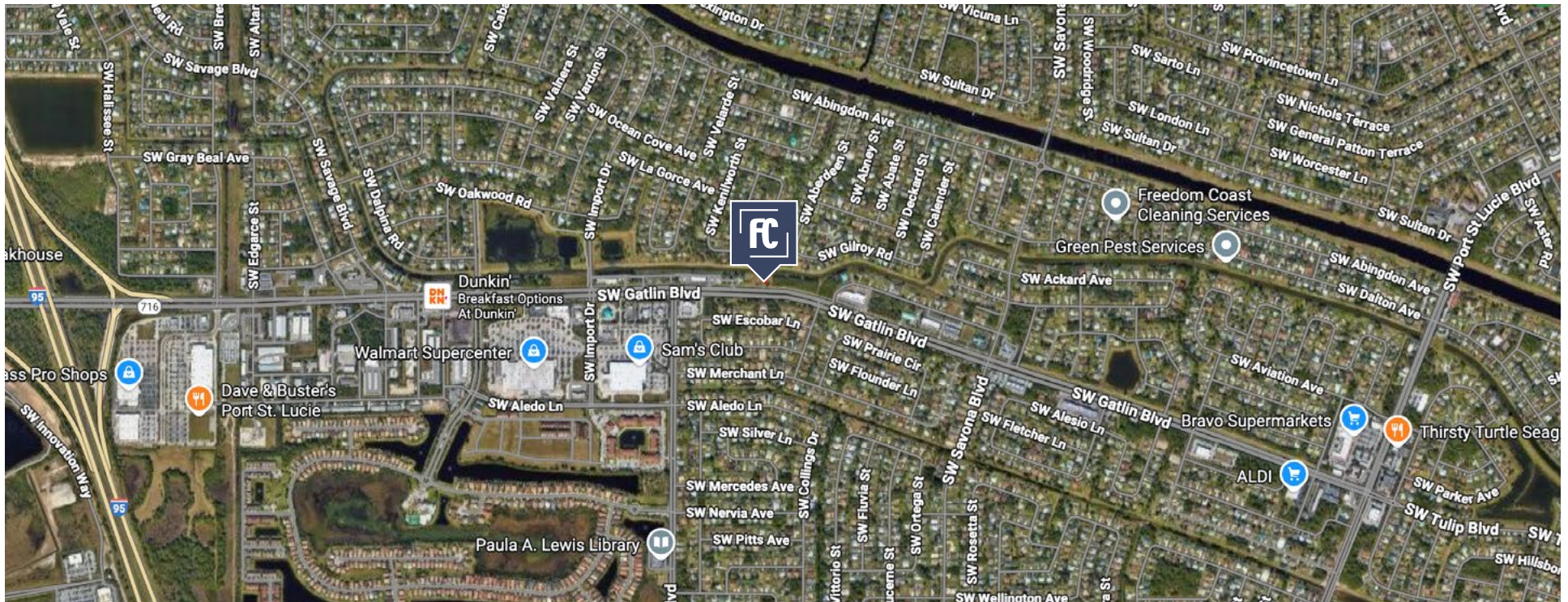
POPULATION

	1 MILE	3 MILES	5 MILES
Population	29.6K	123.2K	189.3K
Median Age	40.1	42.1	43.8



HOUSEHOLDS & INCOME

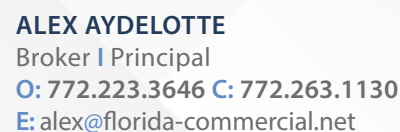
	1 MILE	3 MILES	5 MILES
Total Occupied Households	9,216	39.6K	61.1K
# of Employees	23.7K	99.8K	156.2K
Average HH Income	\$77.9K	\$77.8K	\$77.7K



ALEX AYDELOTTE
Broker | Principal
O: 772.223.3646 C: 772.263.1130
E: alex@florida-commercial.net

.92 AC Port St. Lucie, FL

VACANT COMMERCIAL PARCEL



©Florida Commercial 2021 • This offering is subject to errors, prior to sale/lease, withdrawal, or change in price, terms or conditions without notice.