

LEASE

WAREHOUSE/OFFICE IN NW GNV

6735 NW 18TH DRIVE Unit #Suite 5 Gainesville, FL 32653



PROPERTY DESCRIPTION

1,500 SF warehouse or light industrial space with an office and designated parking in Gainesville's growing northwest corridor. The building offers one grade-level 18 ft roll-up door, open warehouse area, restroom, and paved access for easy loading and deliveries.

PROPERTY HIGHLIGHTS

- 18 FT Roll Up Door
- Dedicated Parking
- Office Space

Lease Rate:	1,687.50 month
Available SF:	1,500 SF

DEMOGRAPHICS	0.3 MILES	0.5 MILES	1 MILE
Total Households	8	16	771
Total Population	20	40	1,751
Average HH Income	\$73,074	\$73,074	\$72,988

Perry Pursell
(352) 665-9731

Shasta Schoellhorn
(352) 922-0048



**COLDWELL BANKER
COMMERCIAL**
M.M. PARRISH REALTORS

LEASE

WAREHOUSE/OFFICE IN NW GNV

6735 NW 18TH DRIVE Unit #Suite 5 Gainesville, FL 32653



Perry Pursell
(352) 665-9731

Shasta Schoellhorn
(352) 922-0048

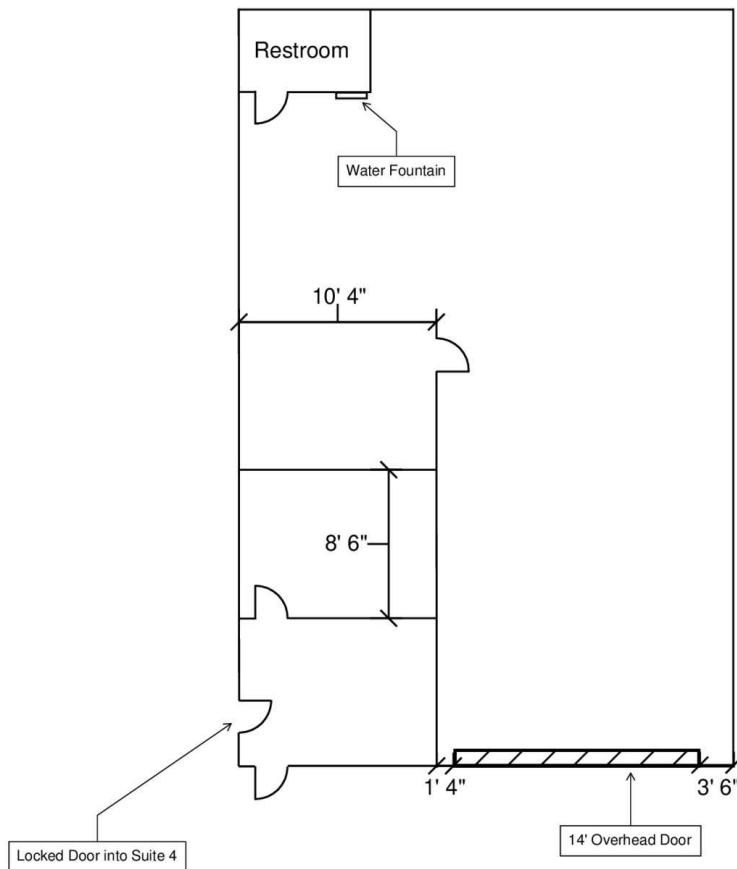


**COLDWELL BANKER
COMMERCIAL**
M.M. PARRISH REALTORS

LEASE

WAREHOUSE/OFFICE IN NW GNV

6735 NW 18TH DRIVE Unit #Suite 5 Gainesville, FL 32653



Perry Pursell
(352) 665-9731

Shasta Schoellhorn
(352) 922-0048

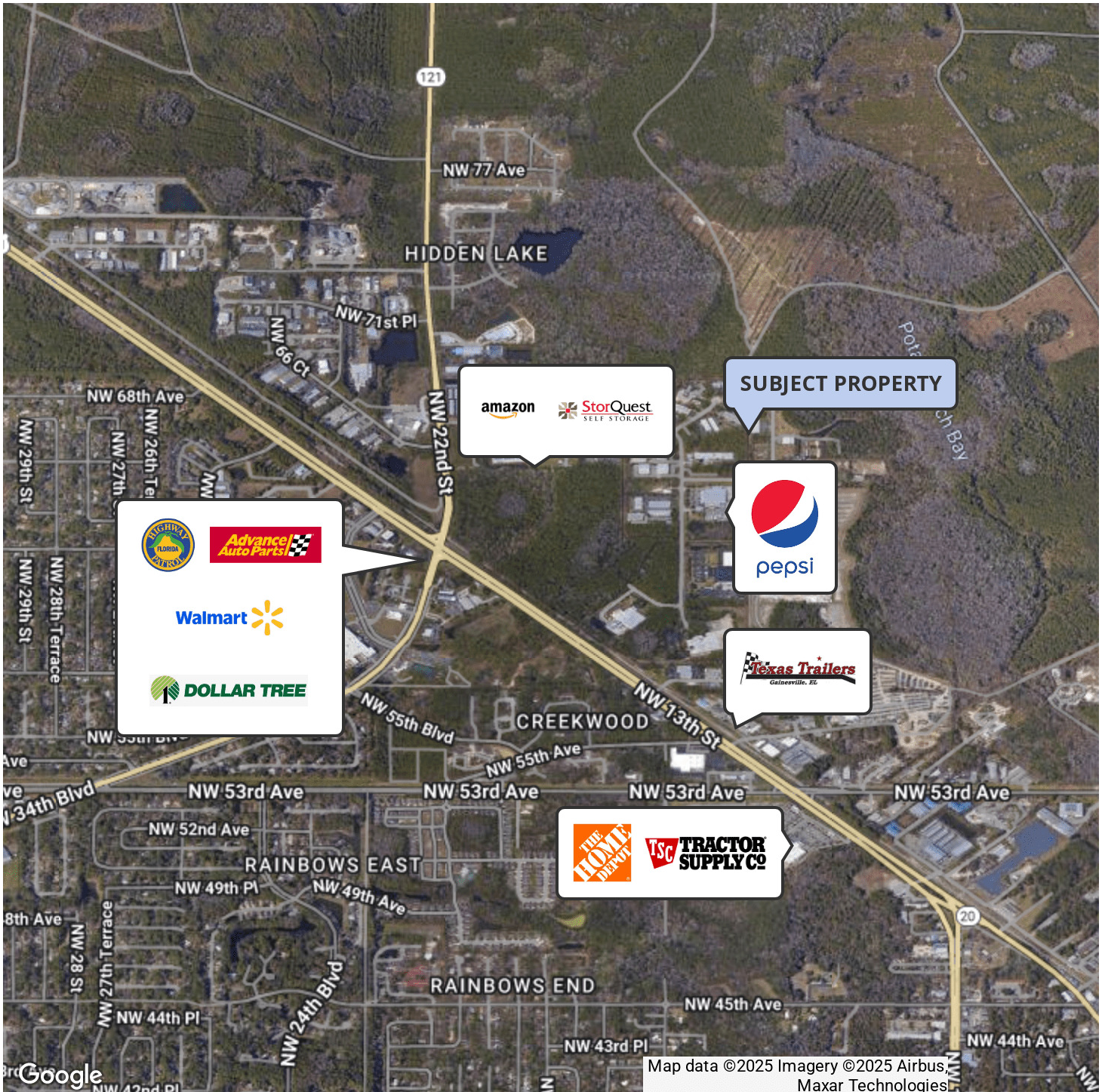


**COLDWELL BANKER
COMMERCIAL**
M.M. PARRISH REALTORS

LEASE

WAREHOUSE/OFFICE IN NW GNV

6735 NW 18TH DRIVE Unit #Suite 5 Gainesville, FL 32653



Perry Pursell
(352) 665-9731

Shasta Schoellhorn
(352) 922-0048



COLDWELL BANKER
COMMERCIAL
M.M. PARRISH REALTORS

LEASE

WAREHOUSE/OFFICE IN NW GNV

6735 NW 18TH DRIVE Unit #Suite 5 Gainesville, FL 32653



PERRY PURSELL

Commercial Sales Associate

Direct: (352) 665-9731 **Cell:** (352) 665-9731
p2venture@aol.com



SHASTA SCHOELLHORN

Commercial Sales Associate

Direct: (352) 922-0048 **Cell:** (352) 922-0048
shasta@mmparrish.com

FL #259506759

Perry Pursell
(352) 665-9731

Shasta Schoellhorn
(352) 922-0048



**COLDWELL BANKER
COMMERCIAL**
M.M. PARRISH REALTORS