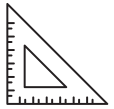


real

Real Broker, LLC

FOR SALE OFFICE/RETAIL

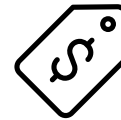
10484 MARTY STREET OVERLAND PARK, KS 66212



4,509 sq ft +/-



Built in 1982



\$800,000

- **±4,500 SF Owner-User Opportunity**
Ideal for professional, medical, or creative office use
- **Highly Flexible Layout**
12 private offices, 2 conference rooms, plus large open workspace
- **Proven Versatility**
Long-term law firm occupancy; previously operated as a daycare
- **Prime, Accessible Location**
Immediate access to major highways for clients and employees
- **Surrounded by Amenities**
Office, retail, restaurants, and shopping nearby



JEREMY APPLEBAUM



JEREMY@APPLEBAUMKC.COM



913.961.1234

REAL ESTATE BROKER

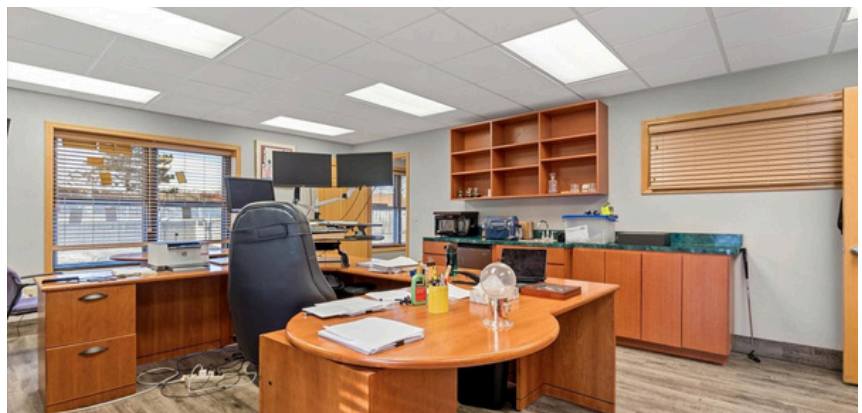
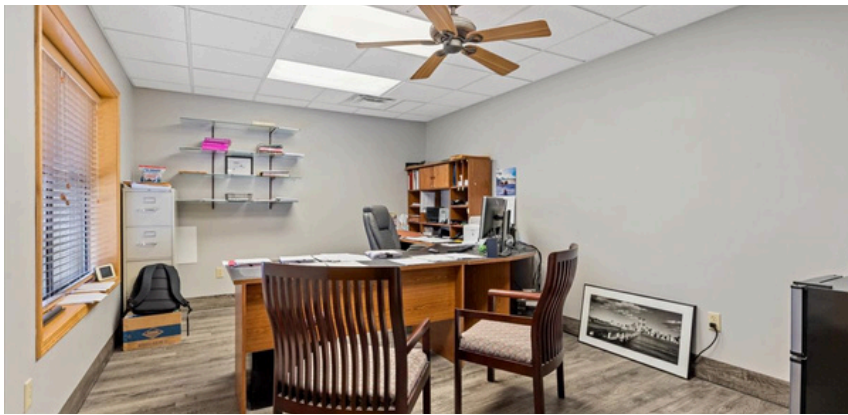
MLS# 2596853



real

Real Broker, LLC

FOR SALE OFFICE/RETAIL



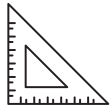
**A COMPELLING OPPORTUNITY FOR AN OWNER-USER SEEKING
LONG-TERM CONTROL, ADAPTABILITY, AND A LOCATION THAT
SUPPORTS GROWTH.**

real

Real Broker, LLC

FOR SALE OFFICE/RETAIL

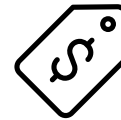
10484 MARTY STREET OVERLAND PARK, KS 66212



4,509 sq ft +/-



Built in 1982



\$800,000



**STRATEGICALLY POSITIONED WITH CLOSE PROXIMITY TO
ALL MAJOR HIGHWAYS, THE LOCATION PROVIDES SEAMLESS
ACCESS FOR EMPLOYEES AND CLIENTS ALIKE.**

Real

Real Broker, LLC

FOR SALE OFFICE/RETAIL

10484 MARTY STREET OVERLAND PARK, KS 66212

