

## OFFERING MEMORANDUM

### *Commercial/Retail Space*

**FOR  
LEASE**

**BRAD KUHRTZ**

📞 Office: 508-862-9000

📱 Cell: 508-360-4523

✉️ BKuhrtz@ComRealty.net

📍 222 West Main Street, Hyannis, MA 02601

🌐 <https://comrealty.net/>



**15 Diamonds Path**

**SOUTH DENNIS**

**FOR LEASE**

**\$800/Month**

**AREA**

**+/- 215 Sq Ft**

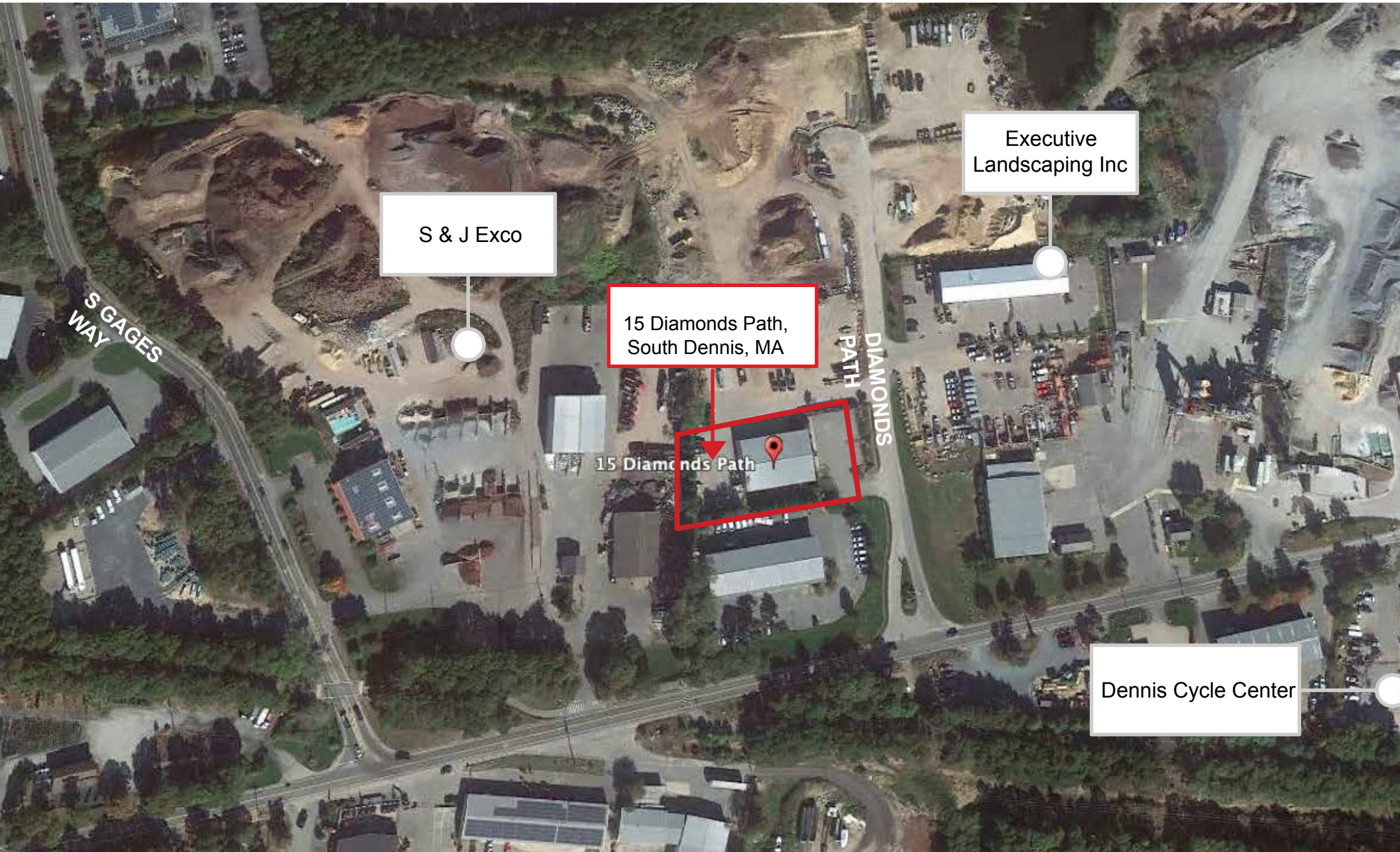
- Private offices for rent in an upscale commercial setting.
- Each office includes shared access to a conference room, bathrooms, and a kitchenette
- 2 Parking Spaces are offered with each office space
- Exterior yard/storage space available for an additional fee

***The space is located minutes from Exit 78 A/B (formerly Exit 9 A/B) on Route 6, and convenient to all Mid & Lower Cape points.***



# PROPERTY LOCATION

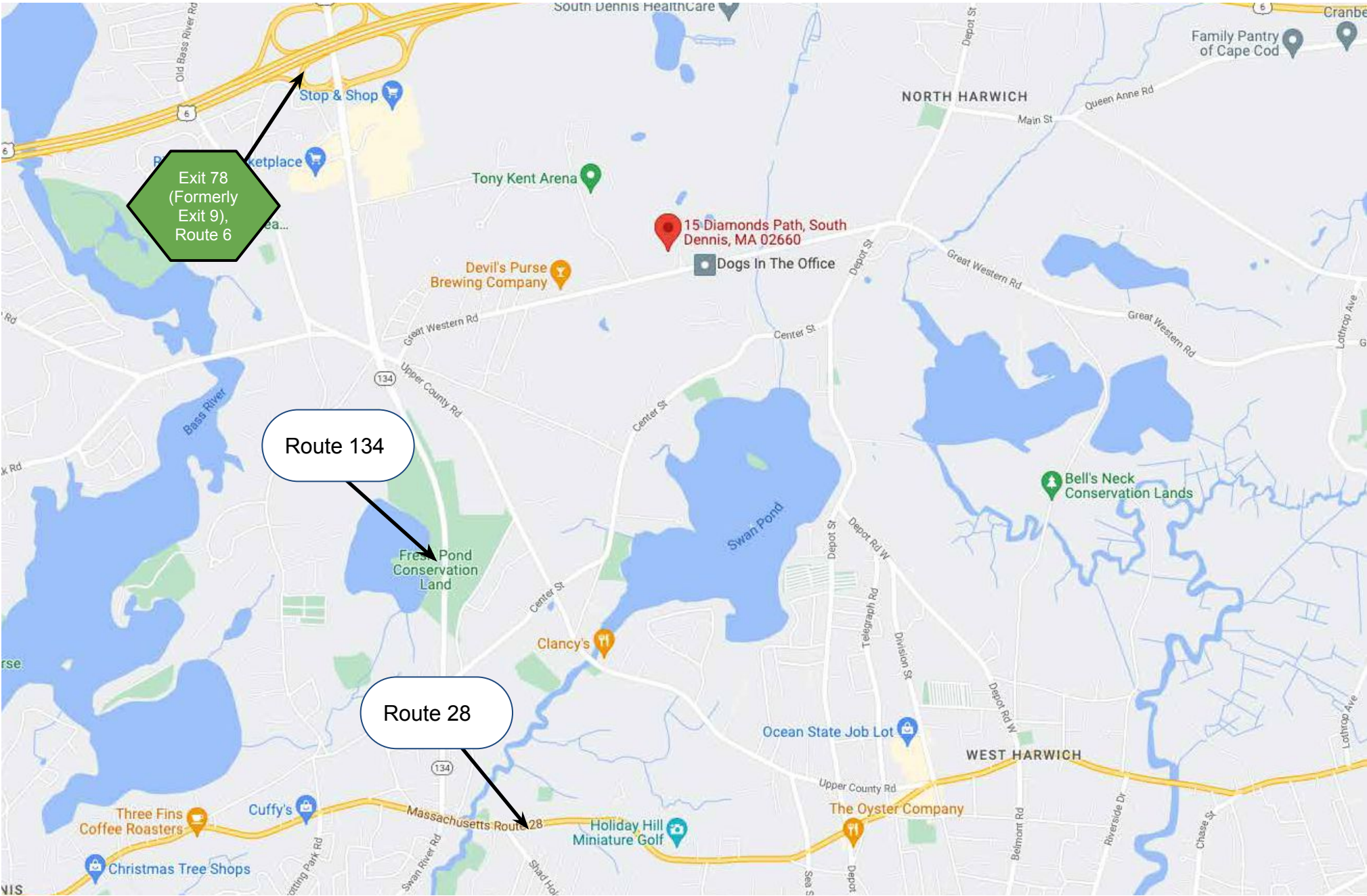
15 Diamonds Path, So. Dennis, MA





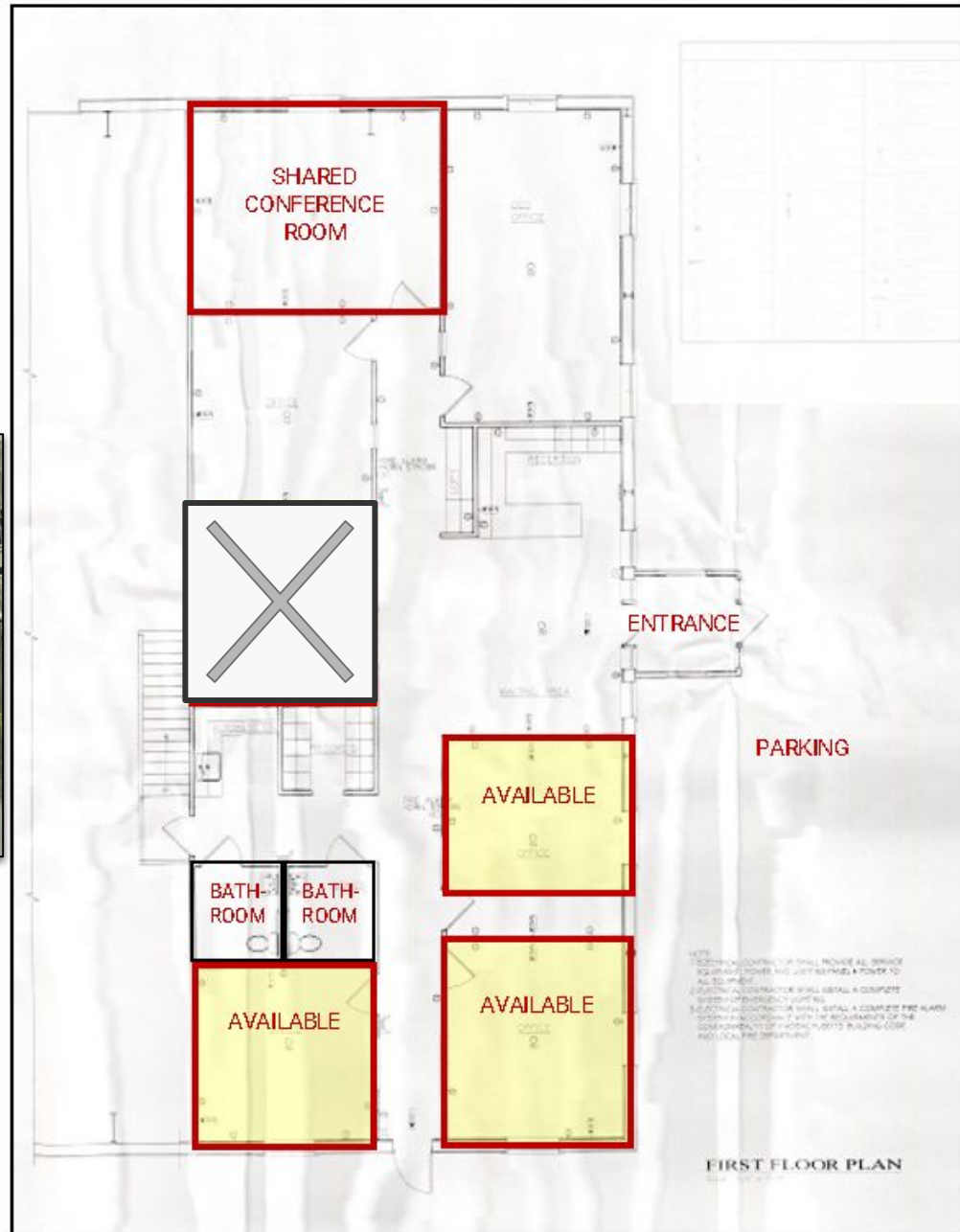
# PROPERTY LOCATION

15 Diamonds Path, So. Dennis, MA



# 15 Diamonds Path, South Dennis, MA 02660

## Floor Plan



**Year Built** 2004

**Size** +/- 215 SF

**Address** 15 Diamonds Path,  
South Dennis, MA

**Book/Page** 34017/212

**Parcel ID** 144-16-0



# PICTURES

15 Diamonds Path, So. Dennis, MA



Commercial  
**Realty Advisors**

## Commercial Realty Advisors' Disclaimer

This information has been secured from sources we believe to be reliable, but we make no representation or warranties, expressed or implied, as to the accuracy of the information contained herein. Commercial Realty Advisors, Inc. and the agent presenting this opportunity represent the Seller / Lessor, and are neither architects, engineers, inspectors, accountants nor attorneys, and therefore all buyers / tenants must consult with their own architects, engineers, inspectors, accountants or attorneys as to financial, zoning, lot line, handicapped accessibility, flood plain, mechanical, structural, or environmental concerns. Buyer must verify all information and bears all the risk for inaccuracies. Referenced square footage and acreage and sketched outlines are approximate, and this information package is subject to change.

## ABOUT

Commercial Realty Advisors, Inc. specializes in commercial and industrial real estate, mergers, acquisitions, joint ventures, divestitures, and other business broker strategies. It is a commercial and real estate brokerage based in Hyannis, Massachusetts, specializing in middle-market transitions. The culture of our firm is that of an investment bank with a premium placed on intellectual vitality, relationship management, and knowledge of geographic markets. A cadre of well-educated and successful experts partner with clients to achieve objectives in a cost and time- effective manner. Our business is broadly based. Our real estate practice includes development, investment, and other commercial sale, lease, and management arrangements. Transactions include manufacturing, retailing, food processing, restaurant and hospitality, golf course, marinas, and other businesses.



SCAN THE QR  
CODE TO VISIT  
COMREALTY.NET!



**COMMERCIAL REALTY  
ADVISORS, INC.**  
222 West Main St. Hyannis, MA  
508-862-9000 | comrealty.net

**LICENSE #6295**  
 **MLS**  
MULTIPLE LISTING SERVICE