

# Gilbert Business Park

## CLASS-A PROFESSIONAL OFFICE SPACE

963-979 N GILBERT RD | GILBERT, AZ 85234



**AVAILABLE  
FOR LEASE**

**Tyson Breinholt**  
D 480.966.7513  
M 602.315.7131  
tbreinholt@cpiaz.com

**Caleb Allen**  
D 480.621.3290  
M 480.622.4174  
callen@cpiaz.com



**COMMERCIAL PROPERTIES INC.**

Locally Owned. Globally Connected. CORFAC INTERNATIONAL

TEMPE: 2323 W University Drive, Tempe, AZ 85281 | 480.966.2301  
SCOTTSDALE: 8767 E Via de Commercio, Suite 101, Scottsdale, AZ 85258 | www.cpiaz.com



# Class-A Professional Office Space in a Prime Gilbert, AZ Location

## AVAILABLE FOR LEASE

Built in 2008, **Gilbert Business Park** is a ±96,979 square foot, Class-A, fully integrated and fully scalable mixed use office complex located in the prestigious high growth Town of Gilbert. The project fronts Gilbert Road and is comprised of one (1) three-story office building and two (2) one-story retail/office buildings offering a range of available space.

## Property Summary

Address	963-979 N Gilbert Rd Gilbert, AZ 85234
Project Size	963: ±10,000 SF (2-Story) 971: ±76,979 SF (3-Story) 979: ±10,000 SF (2-Story) <b>±96,979 SF Total</b>
Year Built	2008
Building Class	A
Zoning	GC
Parking Ratio	4/1,000
<b>Lease Rate</b>	<b>\$26.95/SF/Year (Full Service)</b>



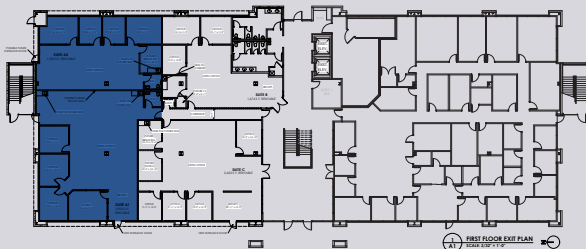
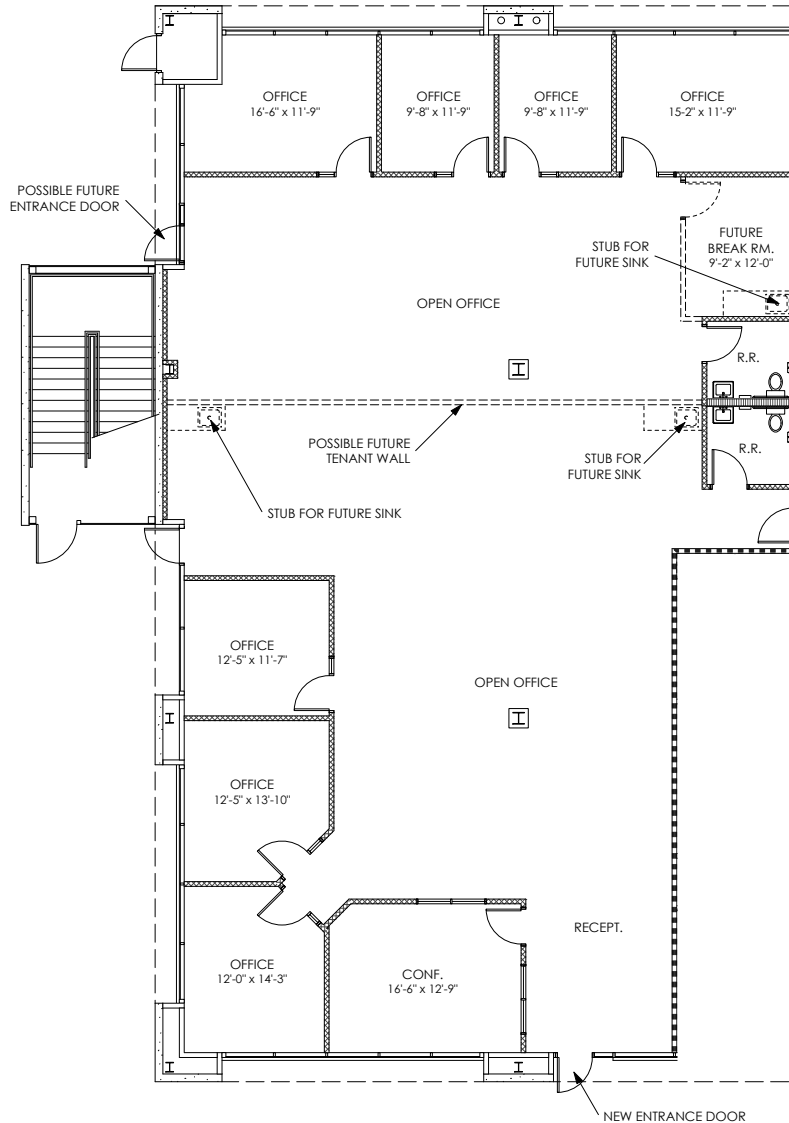
The information contained herein has been obtained from various sources. We have no reason to doubt its accuracy; however, J & J Commercial Properties, Inc. has not verified such information and makes no guarantee, warranty or representation about such information. The prospective buyer or lessee should independently verify all dimensions, specifications, floor plans, and all information prior to the lease or purchase of the property. All offerings are subject to prior sale, lease, or withdrawal from the market without prior notice. 04 01 26

## 971 - 1ST FLOOR

### Suite 114

±4,855 SF | \$26.95/SF/Yr (FS)

- Reception
- 7 Offices
- Conference Room
- 2 Restrooms



The information contained herein has been obtained from various sources. We have no reason to doubt its accuracy; however, J & J Commercial Properties, Inc. has not verified such information and makes no guarantee, warranty or representation about such information. The prospective buyer or lessee should independently verify all dimensions, specifications, floor plans, and all information prior to the lease or purchase of the property. All offerings are subject to prior sale, lease, or withdrawal from the market without prior notice.

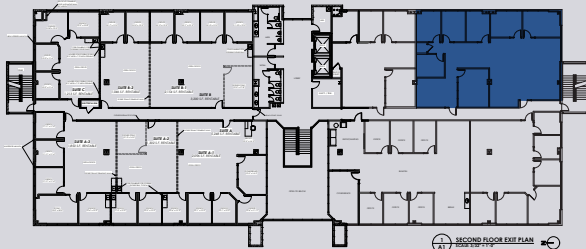
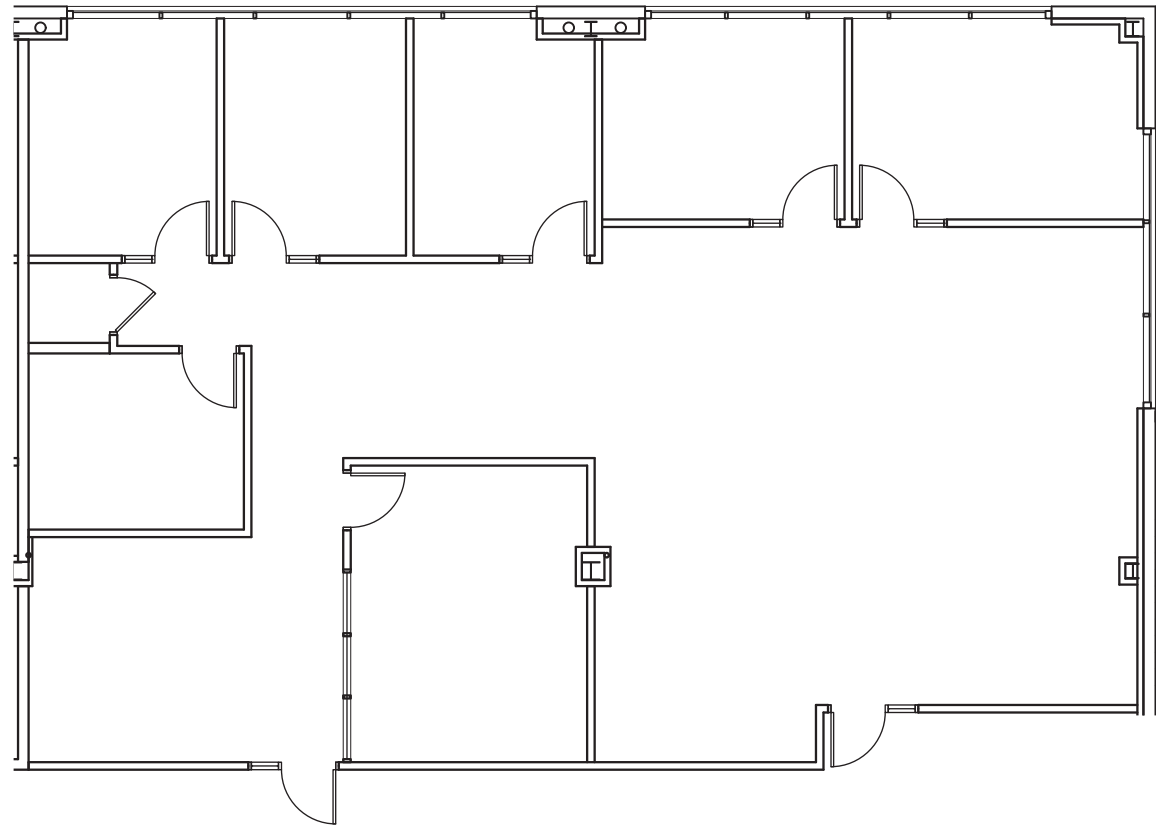
## 971 - 2ND FLOOR

### Suite 203/205

±2,967 SF | \$26.95/SF/Yr (FS)

- Reception
- 7 Offices
- Conference Room
- Break Room

*Common Restrooms & Elevators*



The information contained herein has been obtained from various sources. We have no reason to doubt its accuracy; however, J & J Commercial Properties, Inc. has not verified such information and makes no guarantee, warranty or representation about such information. The prospective buyer or lessee should independently verify all dimensions, specifications, floor plans, and all information prior to the lease or purchase of the property. All offerings are subject to prior sale, lease, or withdrawal from the market without prior notice.

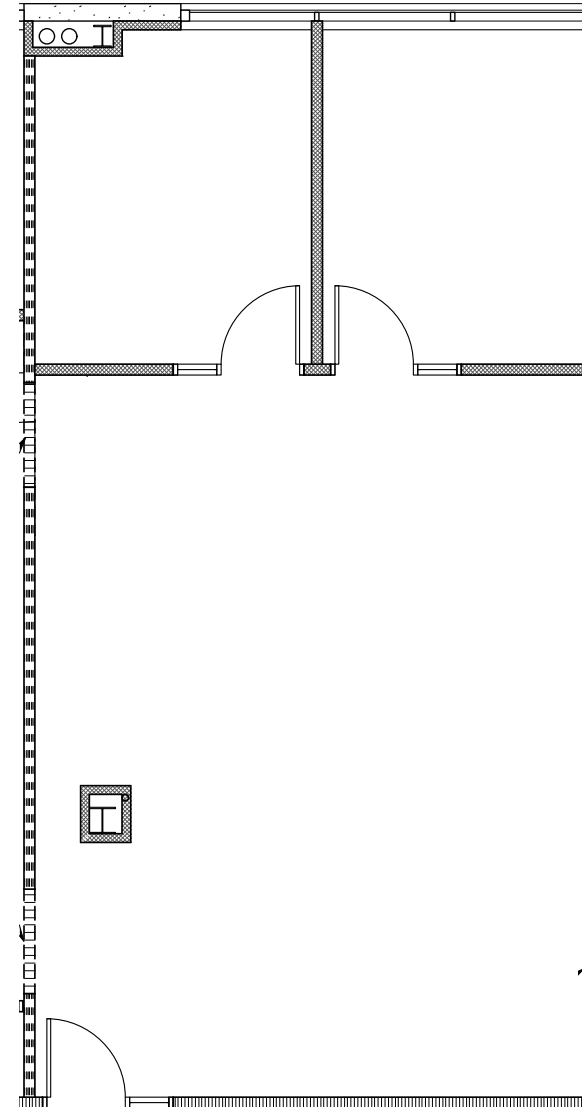
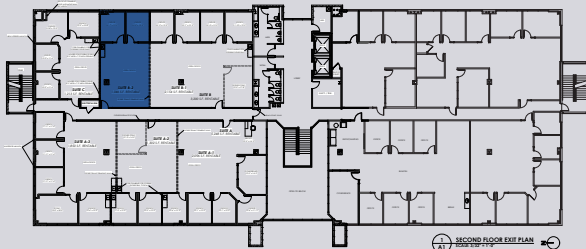
## 971 - 2ND FLOOR

### Suite 213

±1,046 SF | \$26.95/SF/Yr (FS)

- 2 Offices
- Bull Pen

*Common Restrooms & Elevators*



The information contained herein has been obtained from various sources. We have no reason to doubt its accuracy; however, J & J Commercial Properties, Inc. has not verified such information and makes no guarantee, warranty or representation about such information. The prospective buyer or lessee should independently verify all dimensions, specifications, floor plans, and all information prior to the lease or purchase of the property. All offerings are subject to prior sale, lease, or withdrawal from the market without prior notice.

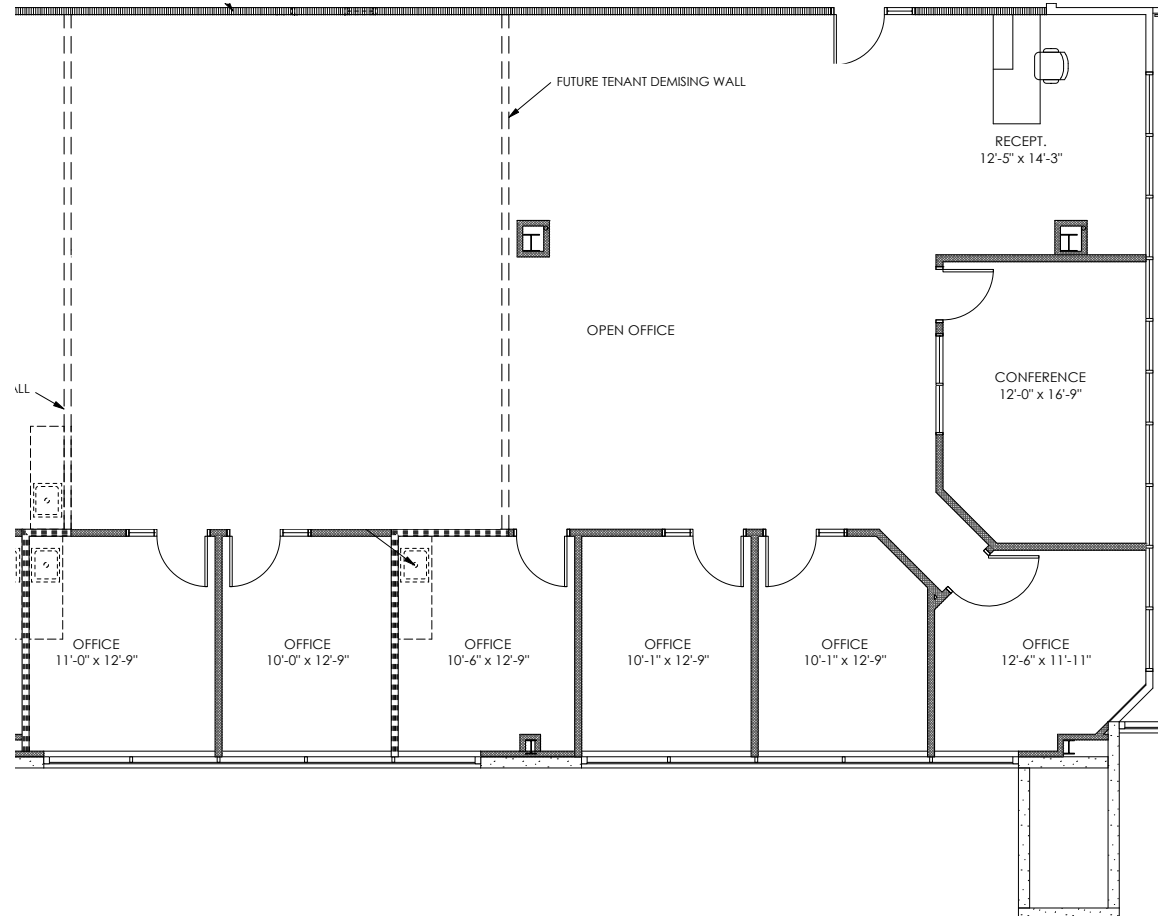
## 971 - 2ND FLOOR

### Suite 218

±3,398 SF | \$26.95/SF/Yr (FS)

- Reception
- 6 Offices
- Conference Room
- Bull Pen

*Common Restrooms & Elevators*



The information contained herein has been obtained from various sources. We have no reason to doubt its accuracy; however, J & J Commercial Properties, Inc. has not verified such information and makes no guarantee, warranty or representation about such information. The prospective buyer or lessee should independently verify all dimensions, specifications, floor plans, and all information prior to the lease or purchase of the property. All offerings are subject to prior sale, lease, or withdrawal from the market without prior notice.

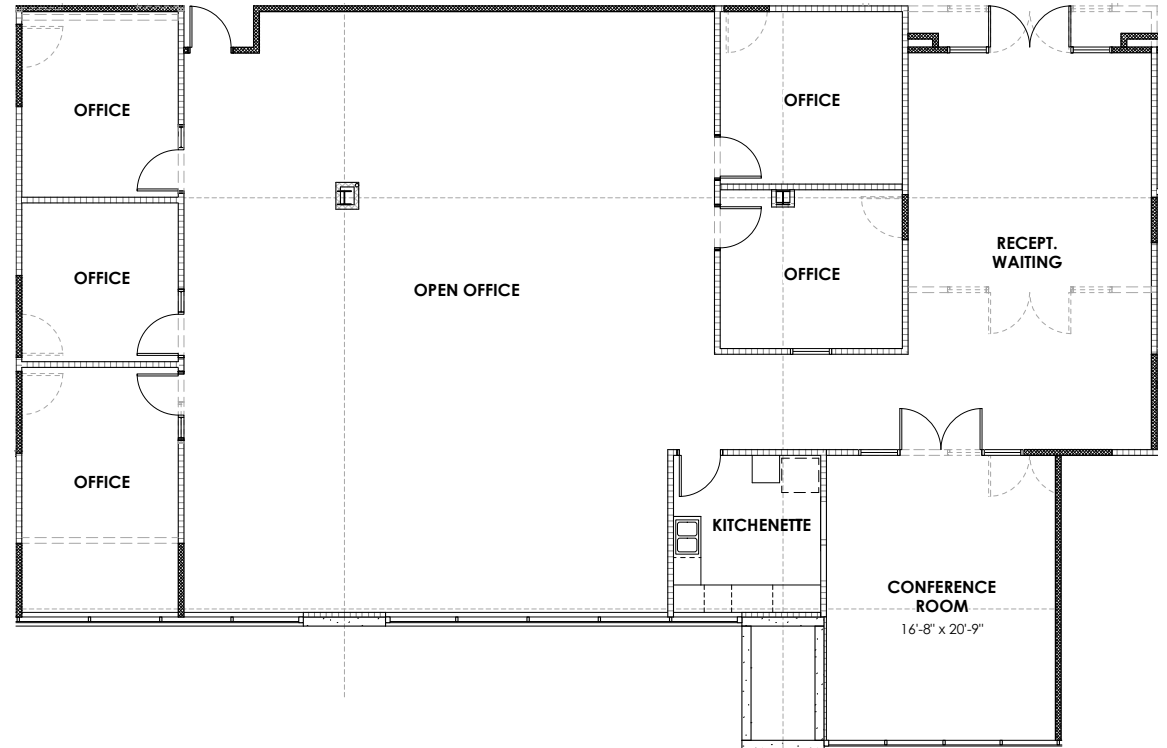
## 971 - 3RD FLOOR

### Suite 317

±4,432 SF | \$26.95/SF/Yr (FS)

- 5 Offices
- Conference Room
- Break Room / Kitchenette
- Bull Pen

*Common Restrooms & Elevators*



The information contained herein has been obtained from various sources. We have no reason to doubt its accuracy; however, J & J Commercial Properties, Inc. has not verified such information and makes no guarantee, warranty or representation about such information. The prospective buyer or lessee should independently verify all dimensions, specifications, floor plans, and all information prior to the lease or purchase of the property. All offerings are subject to prior sale, lease, or withdrawal from the market without prior notice.

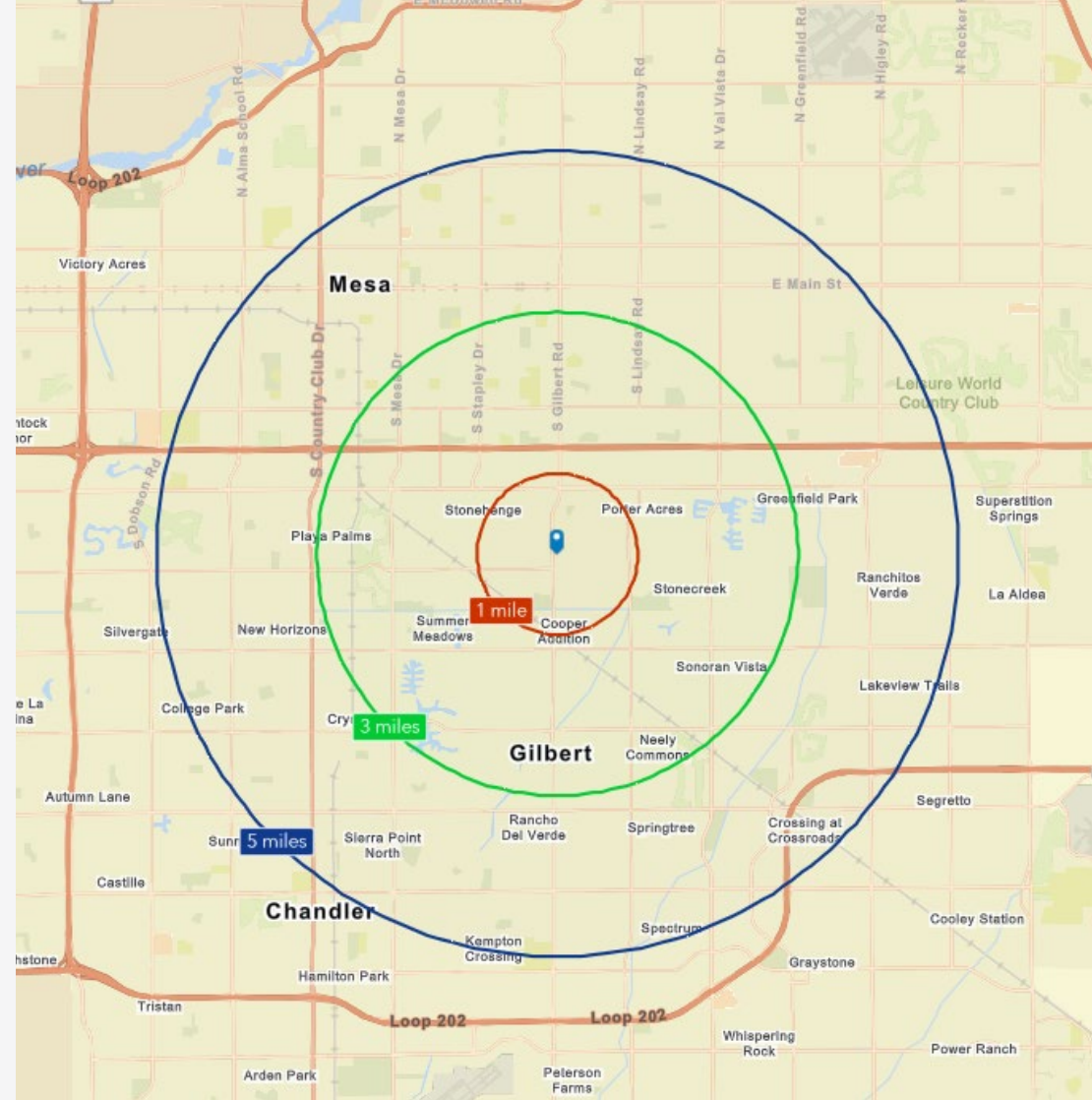
# Prime Gilbert Location

Positioned in the prestigious, high-growth Town of Gilbert, Gilbert Business Park offers a premier Class-A office environment. Fronting Gilbert Road, the property provides outstanding connectivity to the broader East Valley via its immediate proximity to the US 60. This prime location sits just north of the vibrant Downtown Gilbert Heritage District, offering tenants and clients highly attractive surrounding amenities, including nearby Greenfield Medical Center, Banner Health, and abundant retail and dining options.



# Demographics

	1 Mile	3 Miles	5 Miles
2025 Population	15,093	131,818	402,675
Annual Growth 2020 - 2025	0.1%	-0.2%	0.2%
2025 Households	5,662	45,741	147,567
Median Age	35.9	36.3	36.8
Bachelor's Degree or Higher	36%	33%	30%
Avg HH Income	\$118,877	\$120,148	\$107,066
Total Consumer Spending	\$206.2M	\$1.7B	\$5B
Daytime Employment	7,207	58,445	158,436
Businesses	1,043	7,731	20,049
Median Home Value	\$502,837	\$472,274	\$444,520



**Tyson Breinholt**  
 D 480.966.7513  
 M 602.315.7131  
 tbreinholt@cpiaz.com

**Caleb Allen**  
 D 480.621.3290  
 M 480.622.4174  
 callen@cpiaz.com



**COMMERCIAL PROPERTIES INC.**

Locally Owned, Globally Connected. CORFAC INTERNATIONAL

TEMPE: 2323 W University Drive, Tempe, AZ 85281 | 480.966.2301  
 SCOTTSDALE: 8767 E Via de Commercio, Suite 101, Scottsdale, AZ 85258 | www.cpiaz.com

The information contained herein has been obtained from various sources. We have no reason to doubt its accuracy; however, J & J Commercial Properties, Inc. has not verified such information and makes no guarantee, warranty or representation about such information. The prospective buyer or lessee should independently verify all dimensions, specifications, floor plans, and all information prior to the lease or purchase of the property. All offerings are subject to prior sale, lease, or withdrawal from the market without prior notice. 04 01 26