

CONTRACTOR: On Site Construction Company
 5808 HIGHWAY 189 N
 BAKER, FL 32531
 PHONE: (850) 537-8815
 CONTACT: MR. REX HOLLEY

ARBOR LAKE PHASE II SANITARY SEWER AS-BUILT

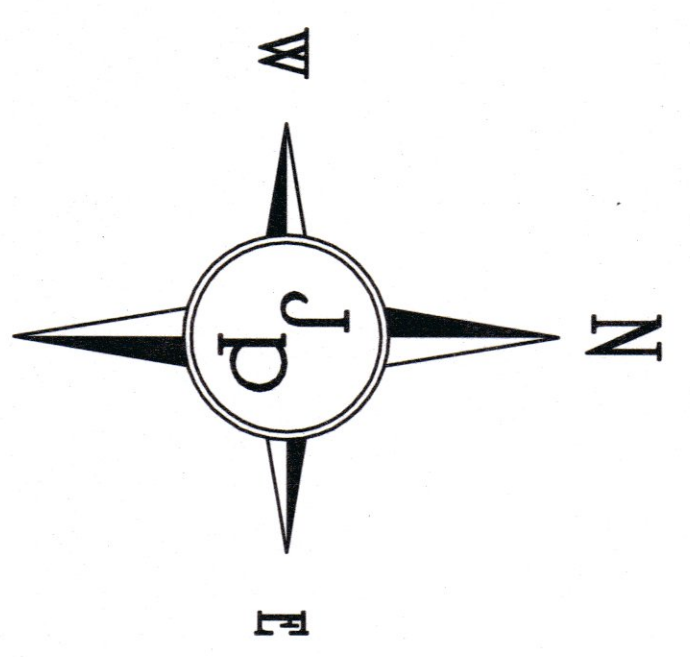
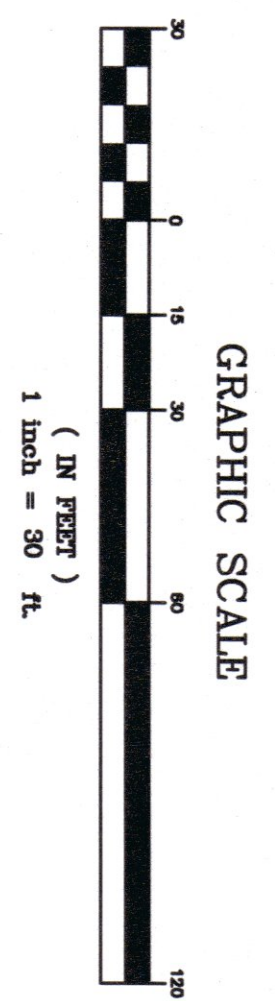
Sewer As-built Location Legend:

- (100) DENOTES SANITARY SEWER SERVICE LOCATION
- (25) DISTANCE MEASURED FROM THE DOWNSTREAM MANHOLE
- (30) DISTANCE PERPENDICULAR RIGHT OR LEFT OF SEWER MAIN

Sewer As-built Legend:

- ⊙ ADJACENT SEWER MANHOLE
- ⊙ SEWER CLEAN OUT
- x- 3" SPLIT RAIL WOOD FENCE
- o- 4" CHAINLINK FENCE
- 6" WOOD PRIVACY FENCE
- ⊠ WOOD PORCH COLUMN
- ⊡ CONDOMINIUM BUILDING NUMBER
- ⊞ LIFT STATION (WET WELL, CONTROL PANEL, & GRINDER)
- ⊞ DOUBLE SEWER SERVICE
- ⊞ PROPOSED PRIVATE 15' DRAINAGE EASEMENT
- ⊞ PROPOSED INGRESS/EGRESS & UTILITY EASEMENT (CITY OF CRESTVIEW)
- ⊞ EXISTING CONCRETE
- ⊞ EXISTING ASPHALT PAVEMENT
- ⊞ EXISTING COVERED CONCRETE
- ⊞ SET CONCRETE MONUMENT
- ⊞ LB #7191
- ⊞ CONCRETE RETAINING WALL (PHASE 2)
- ⊞ CONCRETE RETAINING WALL (PHASE 1)
- SEWER MANHOLE (PHASE 1)

CALL SUNSHINE
 48 HOURS BEFORE YOU DIG
 1-800-432-4770
 DIG SAFELY

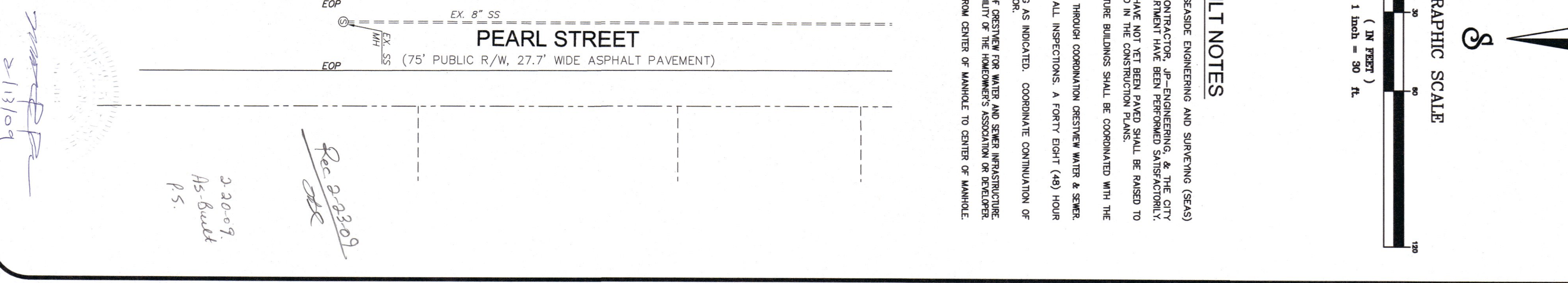
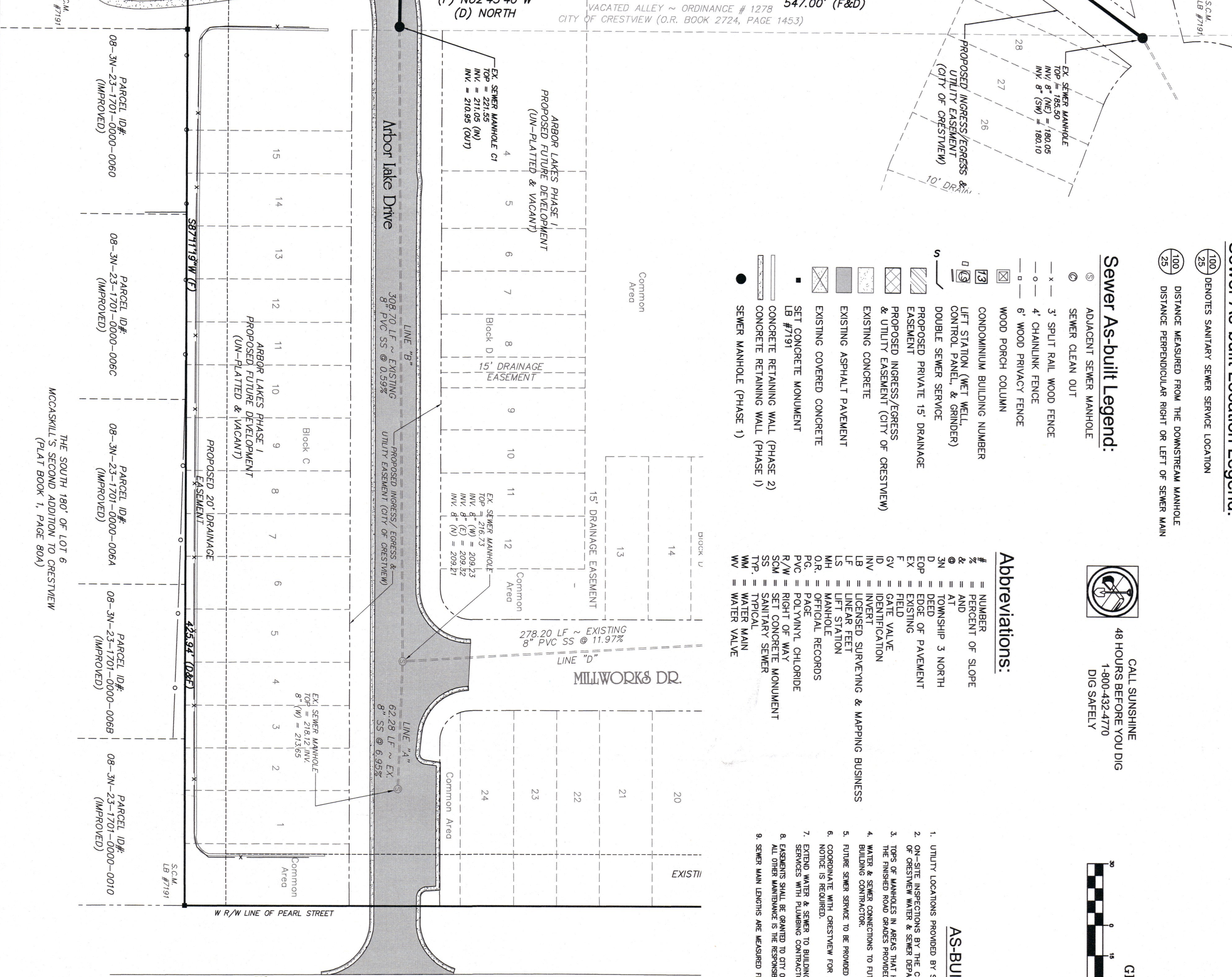
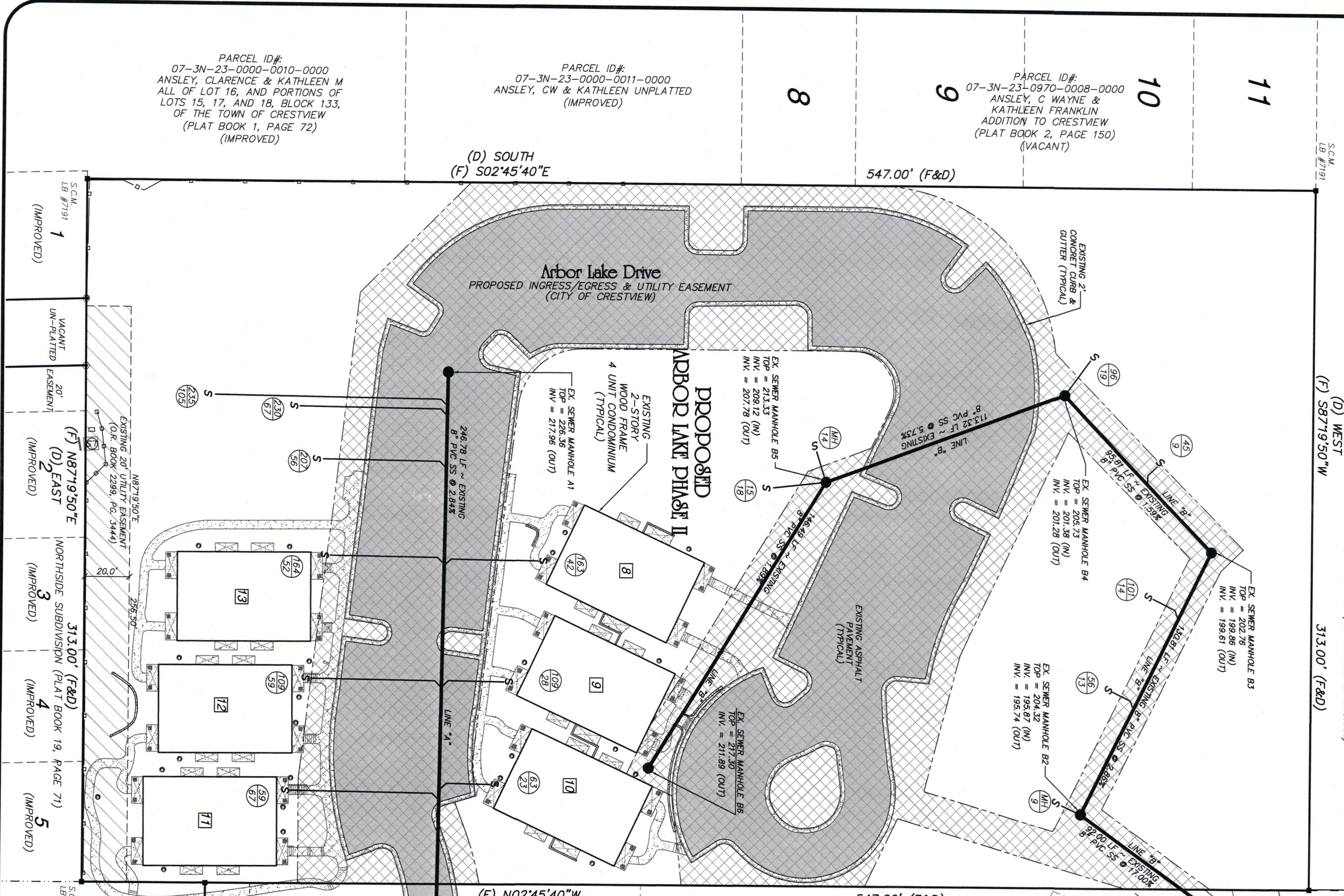


Abbreviations:

- # = NUMBER
- % = PERCENT OF SLOPE
- & = AND
- AT = AT
- 3N = TOWNSHIP 3 NORTH
- D = DEED
- EXP = EDGE OF PAVEMENT
- EX = EXISTING
- CV = CURE VALVE
- ID = IDENTIFICATION
- INV = INVERT
- LS = LICENSED SURVEYING & MAPPING BUSINESS
- LF = LINEAR FEET
- LI = LIFT STATION
- MH = MANHOLE
- OR = OFFICIAL RECORDS
- OR = POLY (NYL, CHLORIDE
- PVC = POLY(VINYL CHLORIDE
- R/W = RIGHT OF WAY
- SCM = SET CONCRETE MONUMENT
- SS = SANITARY SEWER
- TYP = TYPICAL
- WM = WATER MAIN
- WV = WATER VALVE

AS-BUILT NOTES

1. UTILITY LOCATIONS PROVIDED BY SEASIDE ENGINEERING AND SURVEYING (SEAS)
2. ON-SITE INSPECTIONS BY THE CONTRACTOR, JP-ENGINEERING, & THE CITY OF CRESTVIEW WATER & SEWER DEPARTMENT HAVE BEEN PERFORMED SATISFACTORILY.
3. TOPS OF MANHOLES IN AREAS THAT HAVE NOT YET BEEN PAVED SHALL BE RAISED TO WATER & SEWER CONTRACTOR.
4. FINISHED ROAD GRADES PROVIDED IN THE CONSTRUCTION PLANS.
5. WATER & SEWER CONNECTIONS TO FUTURE BUILDINGS SHALL BE COORDINATED WITH THE BUILDING CONTRACTOR.
6. FUTURE SEWER SERVICE TO BE PROVIDED THROUGH COOPERATION CRESTVIEW WATER & SEWER.
7. COOPERATE WITH CRESTVIEW FOR ALL INSPECTIONS. A FORTY EIGHT (48) HOUR NOTICE IS REQUIRED.
8. SETTING WATER & SEWER TO BUILDING AS INDICATED. COORDINATE CONTINUATION OF PIPING WITH BUILDING CONTRACTOR.
9. EXISTING SHALL BE GRANTED TO CITY OF CRESTVIEW FOR WATER AND SEWER INFRASTRUCTURE. ALL OTHER MAINTENANCE IS THE RESPONSIBILITY OF THE HOMEOWNER'S ASSOCIATION OF DEVELOPERS.
9. SEWER MAIN LENGTHS ARE MEASURED FROM CENTER OF MANHOLE TO CENTER OF MANHOLE.



DRAWN: MRP	DATE: AUGUST 25, 2008	SHEET 1 OF 2	REVISIONS:
CHECKED: M. JOHNSON	SCALE: 1"=30'	FILE NO.: 08-03	
APPROVED: M. PARKER		F.B. NO.:	

ARBOR LAKE PHASE II

SEWER AS-BUILT (SOUTH)

JP-Engineering
 Civil Engineering/Land Planning
 P.O. Box 5335 ~ Niceville, FL 32578-5335 ~ (850) 678-1355
 Certificate of Authorization No. 27014
 Maureen M. Johnson PE# 56138 ~ Matthew R. Parker PE# 60817

2-13-09
 2-20-09
 As-Built
 P.S.