

# For Sublease

±3,578 sf at Willow Creek Siena Office Park

2904 West Horizon Ridge Parkway  
Henderson, NV 89052

**BARTON HYDE**

Principal - Office

702 475 7546

[barton.hyde@avisonyoung.com](mailto:barton.hyde@avisonyoung.com)

NV License #: S.41080

**DOMINICK FLORATOS**

Associate - Office

702 904 3442

[dominick.floratos@avisonyoung.com](mailto:dominick.floratos@avisonyoung.com)

NV License #: S.204334

**AVISON  
YOUNG**

10845 Griffith Peak Drive, Suite 100 • Las Vegas, NV 89135 • 702.472.7979 • [avisonyoung.com](http://avisonyoung.com)

© 2025 Avison Young Nevada. All rights reserved. E. & O.E.:

The information contained herein was obtained from sources which we deem reliable and, while thought to be correct, is not guaranteed by Avison Young.

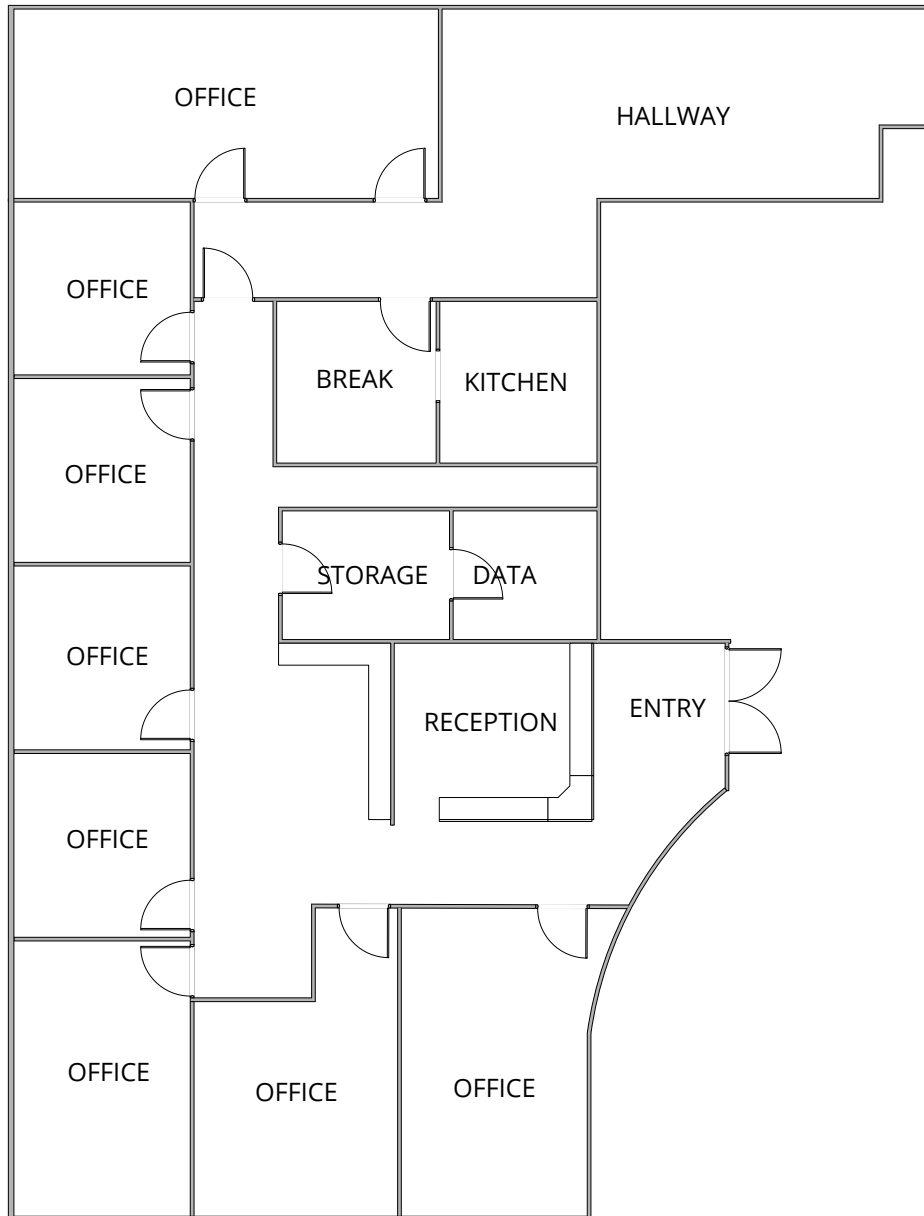


# For Sublease

2904 West Horizon Ridge Parkway  
Henderson, NV 89052

This premier medical office location in Henderson, Nevada, offers a highly desirable setting for healthcare professionals seeking a well-connected, amenity-rich environment. Situated just off Eastern Avenue and Saint Rose Parkway, this address provides excellent visibility, accessibility, and proximity to a wide range of medical services and conveniences. The building at 2904 W Horizon Ridge Parkway is home to several established and reputable medical practices, making it an ideal hub for healthcare tenants.





## Suite 101

**±3,578 rsf**

- Medical or office
- \$1.85 psf/month/net
- \$0.46 psf/month/CAM
- Sublease thru 9/30/2030
- Move-in-ready
- Class A interior improvements
- Interior and common area restrooms
- Grand staircase and elevator
- Total building size : 27,600 sf
- Monument signage
- 3 covered reserved parking spaces
- Zoned Office Commerical (CO)



For Sublease



Suite photos



# For Sublease

2904 West Horizon Ridge Parkway  
Henderson, NV 89052

The property is located in a high-traffic medical corridor with Dignity St. Rose Dominican Hospital – Siena Campus, just minutes away. This proximity enhances referral opportunities and patient convenience. The area features a wide selection of restaurants, pharmacies (including CVS and Walgreens), fitness centers, and retail stores, all within a short drive or walking distance. Public transportation options are also accessible.

