

FOR LEASE



PROPERTY DETAILS:

- 1,665 SF - turnkey office space
- New construction mixed-use apartments with first floor office and retail
- Located in the heart of Broad Ripple at the northeast corner of Westfield Blvd. and Riviera Dr.
- Excellent walkability with frontage on the Monon Trail



RIVER HOUSE
6311 Westfield Blvd.
Indianapolis, IN 46220



CONTACT

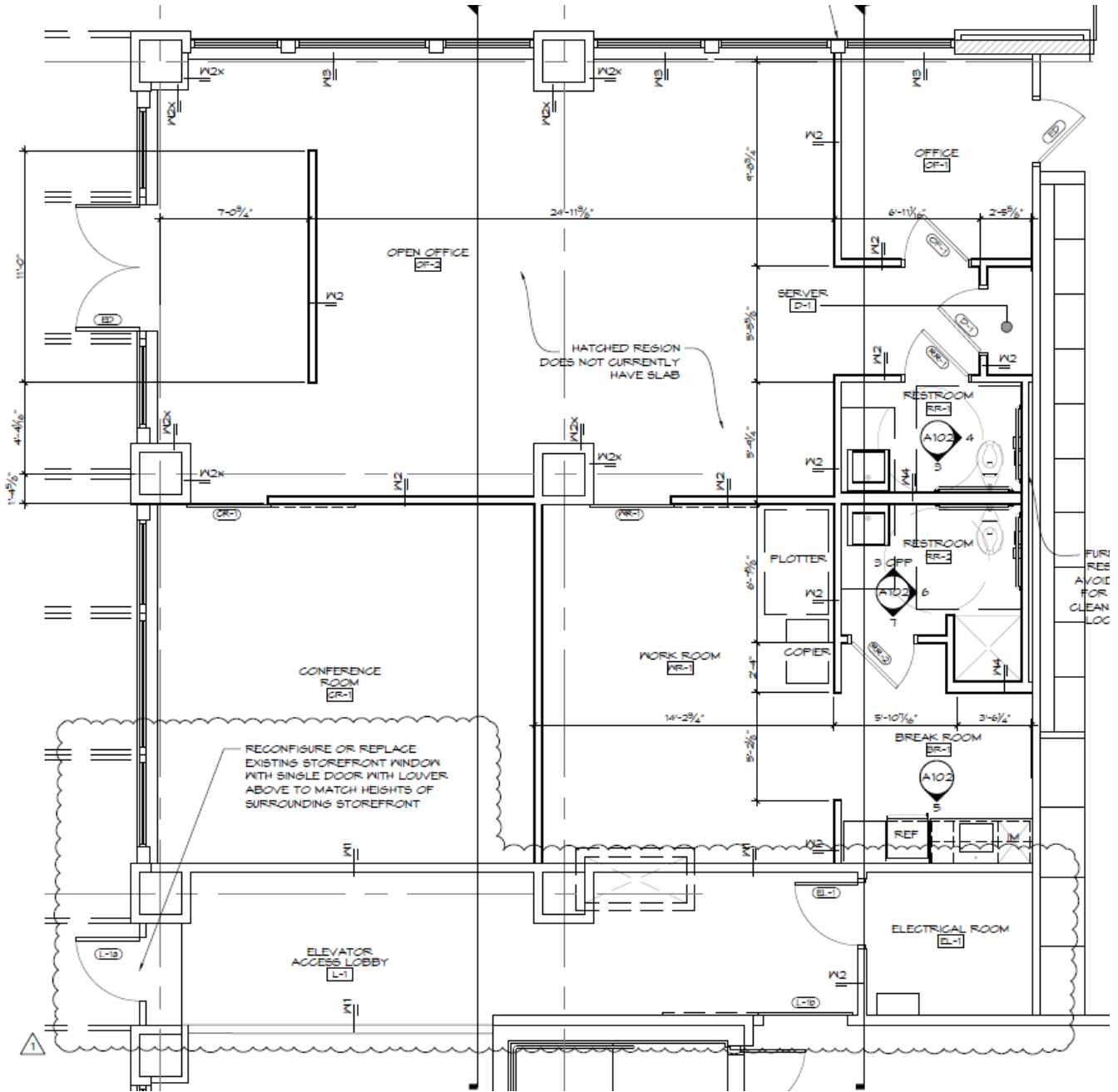
Bill McClamroch
Brokerage Associate
317-919-2992
bmccclamroch@cciin.com

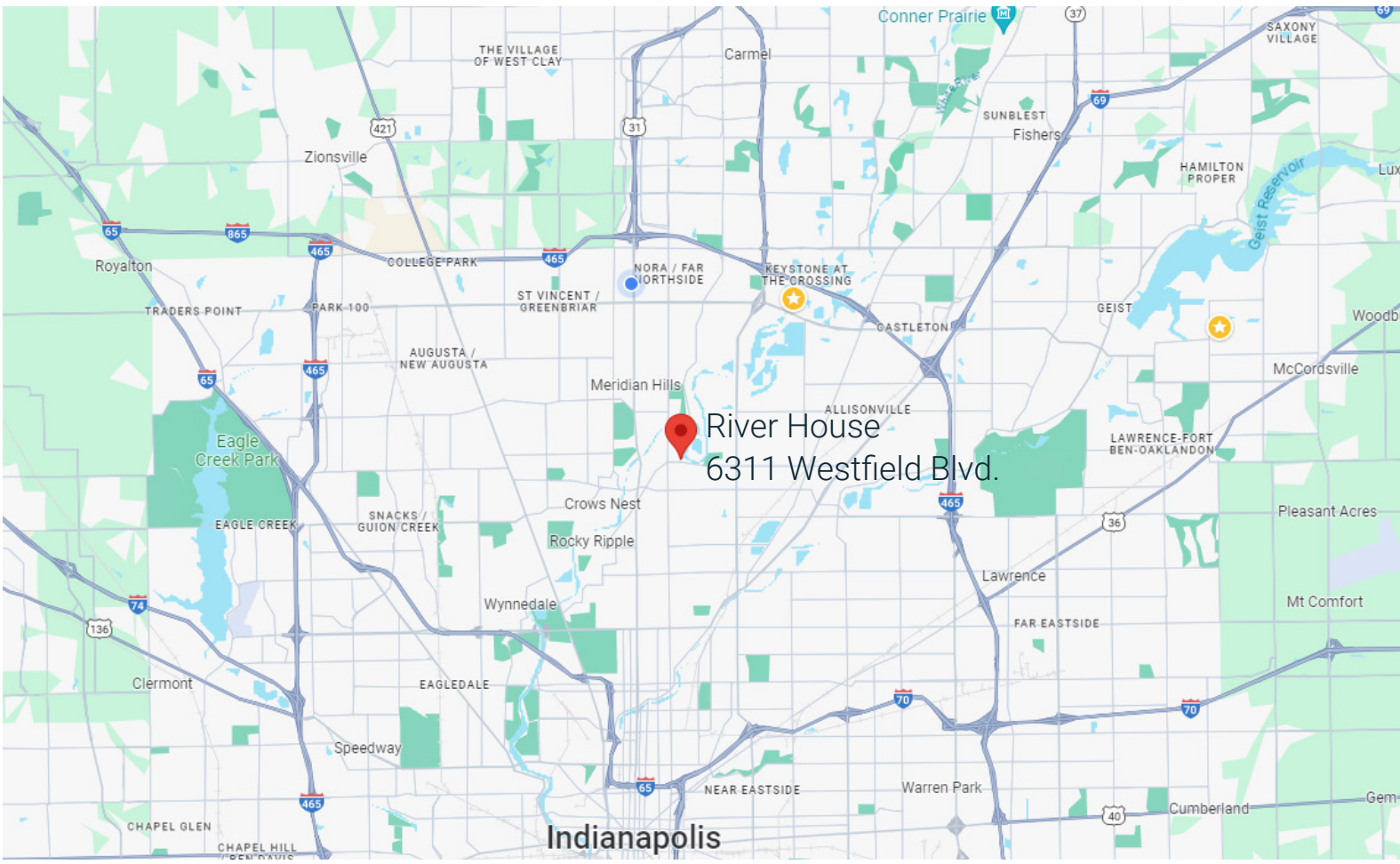
Ben Cohen, MBA
Vice President
bcohen@cciin.com
317-754-6245

Cornerstone Companies, Inc.
8902 N Meridian Street, Suite 205
Indianapolis, IN 46260






FLOOR PLAN

1,665 SF Turnkey Office Space





DEMOGRAPHICS (5-mile radius)

 222,220 Population	 38.3 Median Age
 98,471 Households	 \$46,309 Per Capita Income
 \$67,086 Median Household Income	

CONTACT

Bill McClamroch
Brokerage Associate
317-919-2992
bmccclamroch@cciin.com

Ben Cohen, MBA
Vice President
bcohen@cciin.com
317-754-6245