



**Keegan & Coppin**  
COMPANY, INC.

FOR LEASE

25-35-45-55 MITCHELL BLVD.  
SAN RAFAEL, CA

Best Office Location  
in Central Marin



REPRESENTED BY:

**JOHN MOHUN, AGENT**  
LIC # 02232254 (415) 461-1010, EXT 126  
JMOHUN@KEEGANCOPPIN.COM



# OFFICE SPACE FOR LEASE



25-35-45-55 MITCHELL BLVD.  
SAN RAFAEL, CA

**BEST OFFICE LOCATION  
IN CENTRAL MARIN**

## PROPERTY INFORMATION

### HIGHLIGHTS

- Excellent location
- Abundant parking
- Easy access to local amenities
- Medical uses permitted
- Shared conference room facilities

### OFFICE SPACE

**25 Mitchell, Suite 2:** 1,370+/- sq ft

**25 Mitchell, Suite 3:** 690+/- sq ft

**45 Mitchell, Suite 10:** 709+/- sq ft

**45 Mitchell, Suite 16:** 1,355+/- sq ft

**55 Mitchell, Suite 22:** 588+/- sq ft

### DESCRIPTION

4 private offices, open area, reception, private bathroom and kitchenette.

2 private offices, storage room, reception and private bathroom.

2 private offices and a reception area.

Mostly open floor plan, kitchenette, one private office.

Open area and two private offices.

### LEASE TERMS

#### Size range

588 - 1370+/- sq ft

#### Rate

\$1.95 per sq ft

#### Terms

Gross

#### Parking

4:1000

#### Zoning

LI/O

Keegan & Coppin Co., Inc.  
101 Larkspur Landing Circle, Ste. 112  
Larkspur, CA 94939  
www.keegancoppin.com  
(415) 461-1010

The above information, while not guaranteed, has been secured from sources we believe to be reliable. Submitted subject to error, change or withdrawal. An interested party should verify the status of the property and the information herein.

REPRESENTED BY:

**JOHN MOHUN, AGENT**  
LIC # 02232254 (415) 461-1010, EXT 126  
JMOHUN@KEEGANCOPPIN.COM



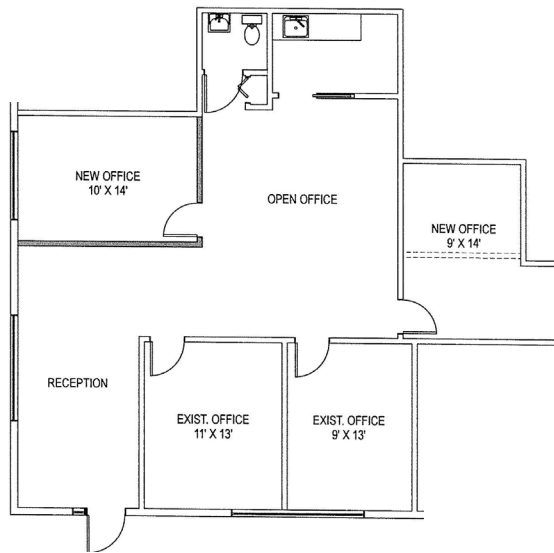
# FLOOR PLANS



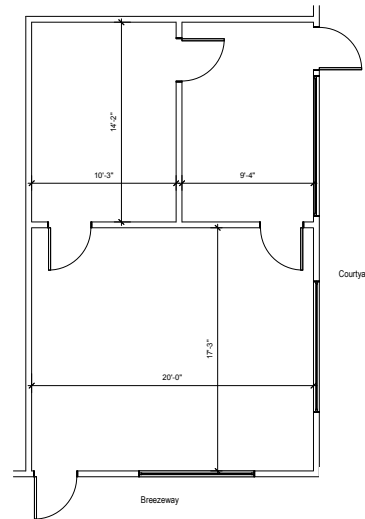
25-35-45-55 MITCHELL BLVD.  
SAN RAFAEL, CA

**BEST OFFICE LOCATION  
IN CENTRAL MARIN**

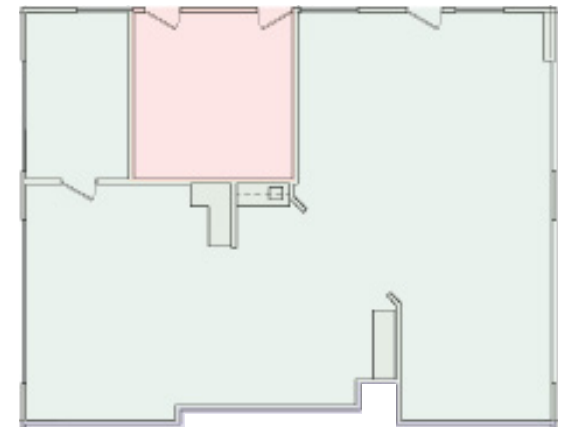
25 MITCHELL, SUITE 2  
1,370+/- RSF



45 MITCHELL, SUITE 10  
709+/- RSF



45 MITCHELL, SUITE 16  
1,355+/- RSF



**REPRESENTED BY:**

**JOHN MOHUN, AGENT**  
**KEEGAN & COPPIN CO., INC.**  
LIC # 02232254 (415) 461-1010, EXT 126  
JMOHUN@KEEGANCOPPIN.COM