

Specifications

±2,500 SF

TOTAL BUILDING SIZE

±0.85 AC (Block 49, Lot 53)

TOTAL ACREAGE

2 (14'W x 16'H)

DRIVE-INS

18' Clear

CEILING HEIGHT

Wet

SPRINKLER SYSTEM

Metal

CONSTRUCTION

3P

POWER

LI

ZONING

For additional property information or to arrange an inspection, please contact the exclusive brokers:

Kenneth F. Crimmins, CCIM, SIOR
Chairman & CEO
973.379.6644 x 111
kfcrimmins@blauberg.com

Jason M. Crimmins, CCIM, SIOR
President
973.379.6644 x 122
jmcrimmins@blauberg.com

Laura L. Crimmins, SIOR
Executive Director
973.379.6644 x 142
lcrimmins@blauberg.com



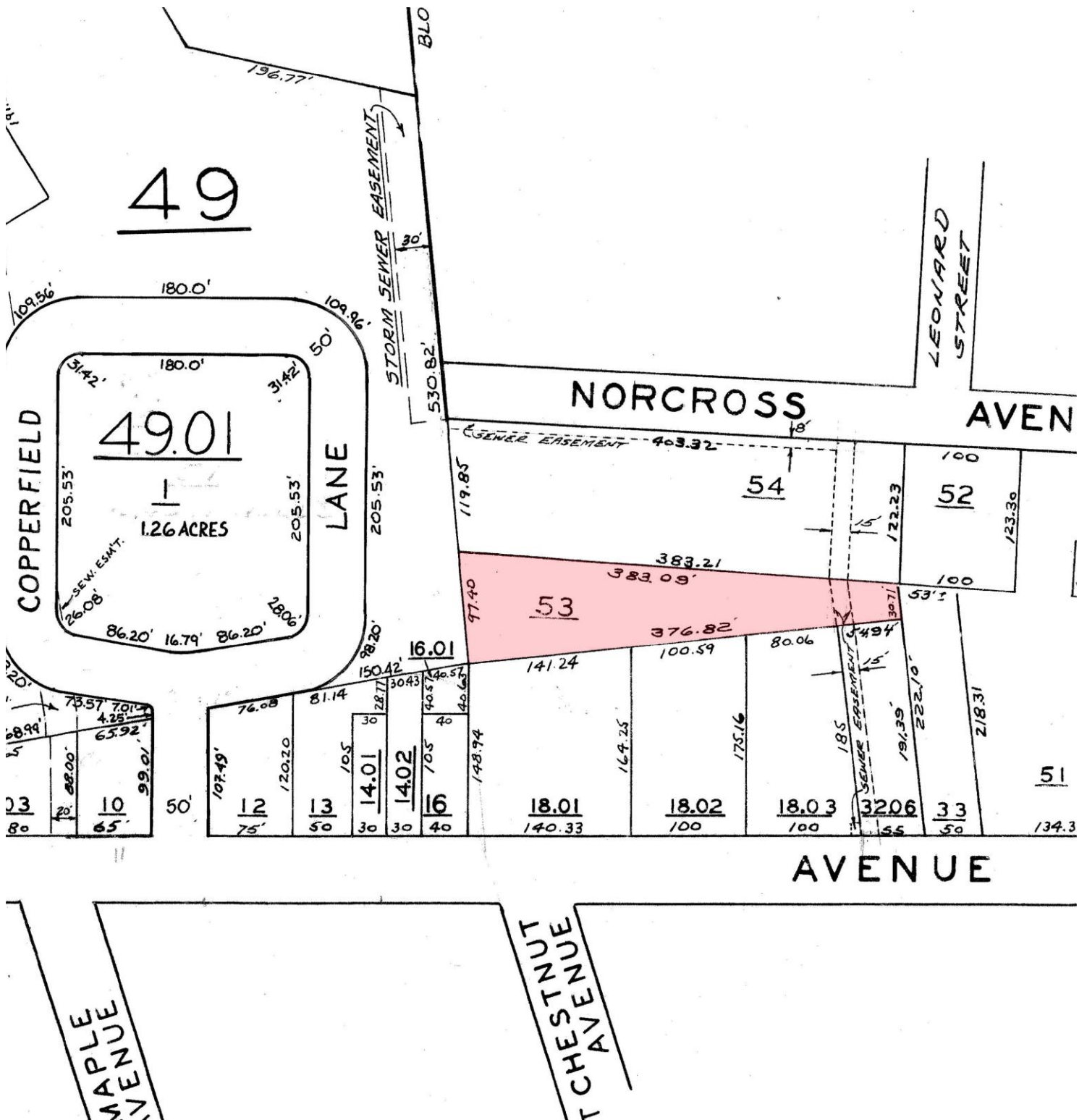
For additional property information or to arrange an inspection, please contact the exclusive brokers:

Kenneth F. Crimmins, CCIM, SIOR
Chairman & CEO
973.379.6644 x 111
kfcrimmins@blauberg.com

Jason M. Crimmins, CCIM, SIOR
President
973.379.6644 x 122
jmcrimmins@blauberg.com

Laura L. Crimmins, SIOR
Executive Director
973.379.6644 x 142
lcrimmins@blauberg.com

The information contained herein has been obtained from sources considered to be reliable, but no guarantee of its accuracy is made by this company. In addition, no representation is made respecting zoning, condition of title, dimensions, or any matters of a legal or environmental nature. Such matters should be referred to legal counsel for determination. Terms and conditions are subject to change without prior notice. Subject to errors and omissions.

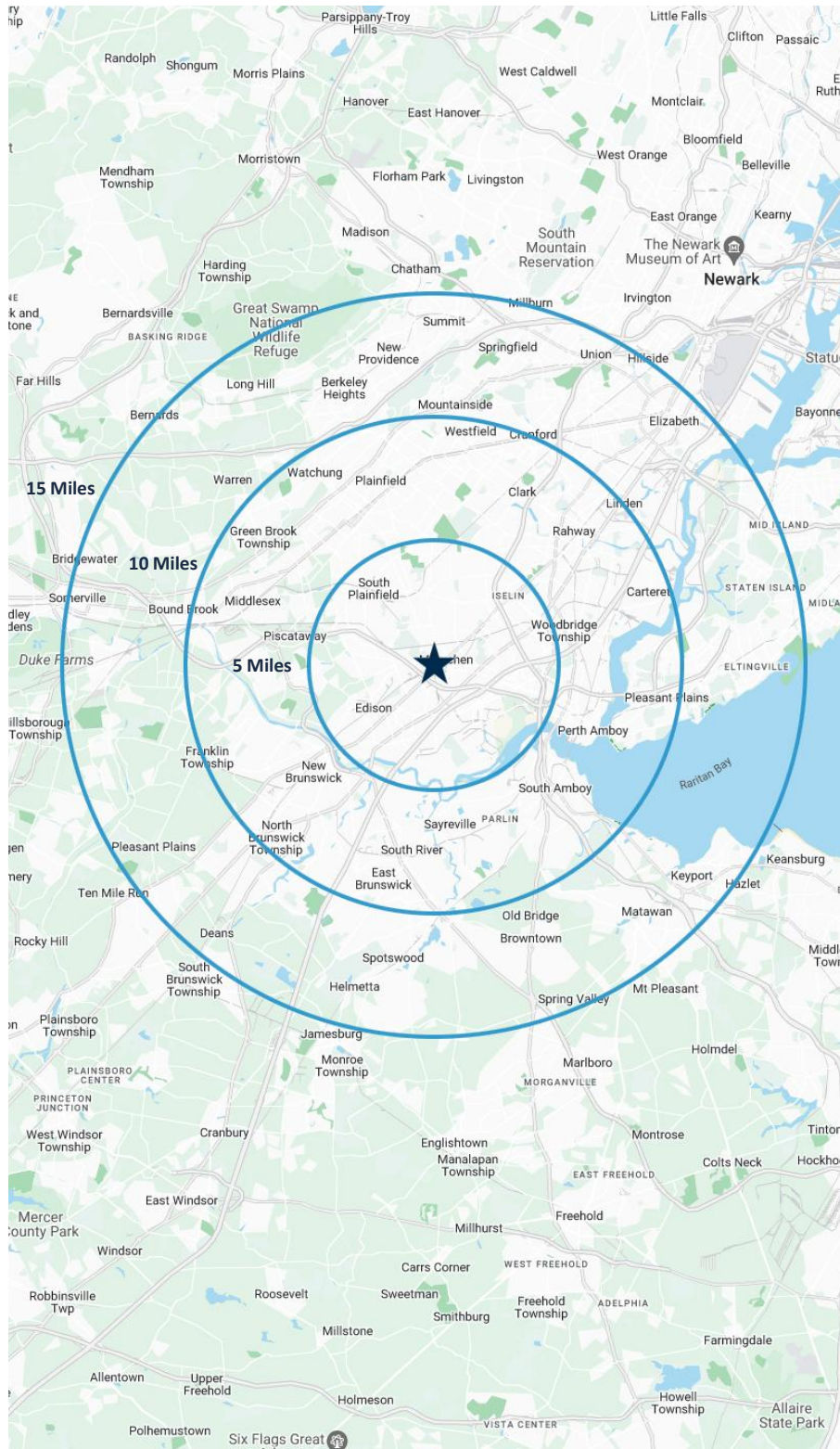


For additional property information or to arrange an inspection, please contact the exclusive brokers:

Kenneth F. Crimmins, CCIM, SIOR
Chairman & CEO
973.379.6644 x 111
kfcrimmins@blauberg.com

Jason M. Crimmins, CCIM, SIOR
President
973.379.6644 x 122
jmcrimmins@blauberg.com

Laura L. Crimmins, SIOR
Executive Director
973.379.6644 x 142
lcrimmins@blauberg.com



5 MILES

- Total Population: 305,643
- Households: 105,876
- Median Household Income: \$130,098
- Average Household Size: 2.8
- Transportation to Work: 148,887
- Labor Force: 248,680

10 MILES

- Total Population: 1.18M
- Households: 413,775
- Median Household Income: \$123,596
- Average Household Size: 2.8
- Transportation to Work: 593,039
- Labor Force: 956,534

15 MILES

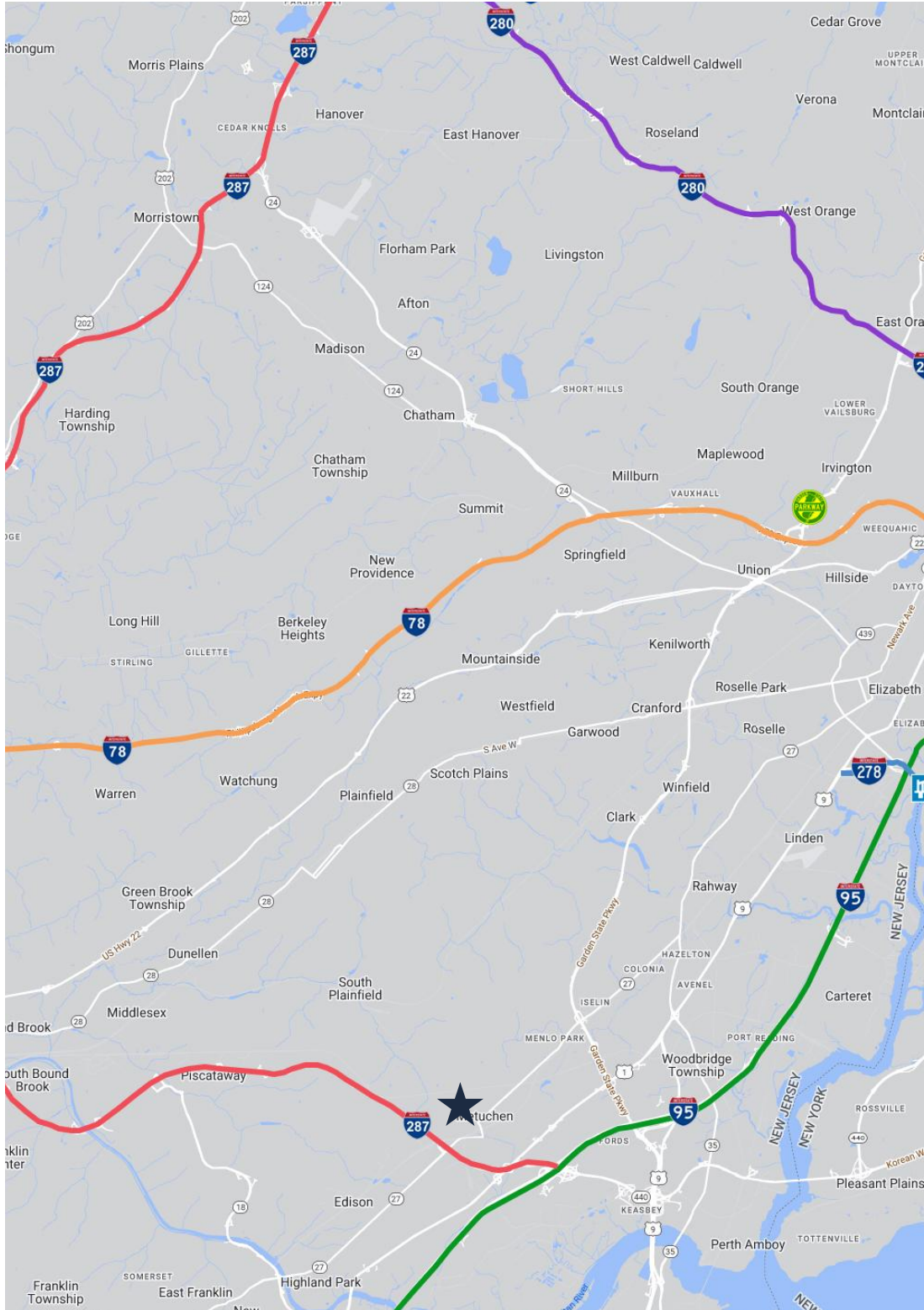
- Total Population: 2.37M
- Households: 840,150
- Median Household Income: \$123,548
- Average Household Size: 2.8
- Transportation to Work: 1.2M
- Labor Force: 1.91M

For additional property information or to arrange an inspection, please contact the exclusive brokers:

Kenneth F. Crimmins, CCIM, SIOR
Chairman & CEO
973.379.6644 x 111
kfcrimmins@blauberg.com

Jason M. Crimmins, CCIM, SIOR
President
973.379.6644 x 122
jmcrimmins@blauberg.com

Laura L. Crimmins, SIOR
Executive Director
973.379.6644 x 142
lcrimmins@blauberg.com



ACCESSIBILITY



1.0 MI
Route 27



1.8 MI
I-287



2.0 MI
US 1



3.4 MI
GSP Exit 132



4.8 MI
I-95 Exit 10



6.1 MI
Rutgers Univ.
Livingston



21 MI
Newark Airport

For additional property information or to arrange an inspection, please contact the exclusive brokers:

Kenneth F. Crimmins, CCIM, SIOR
Chairman & CEO
973.379.6644 x 111
kfcrimmins@blauberg.com

Jason M. Crimmins, CCIM, SIOR
President
973.379.6644 x 122
jmcrimmins@blauberg.com

Laura L. Crimmins, SIOR
Executive Director
973.379.6644 x 142
lcrimmins@blauberg.com