

9213 Ashville Dr.

FOR SALE | 0.71 ACRE

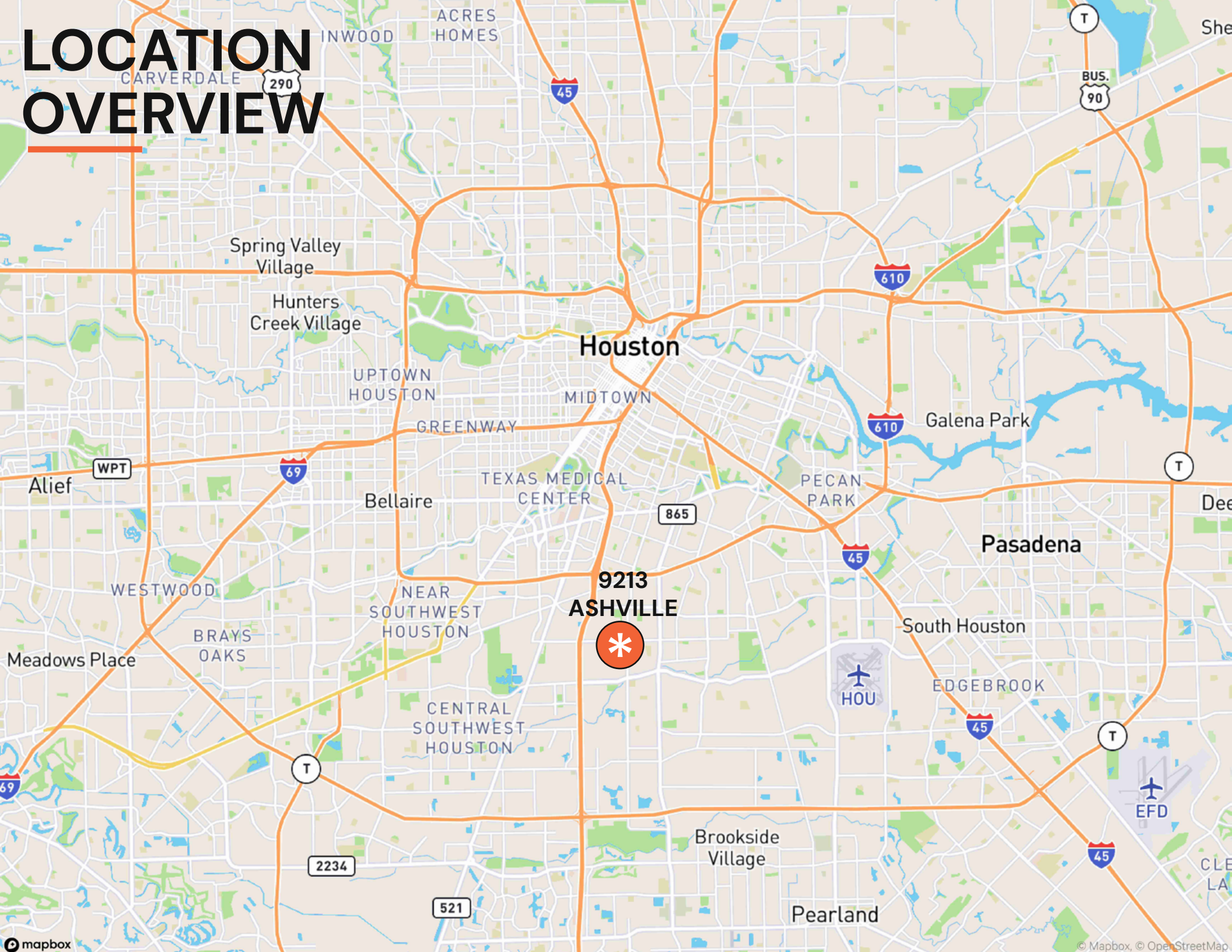


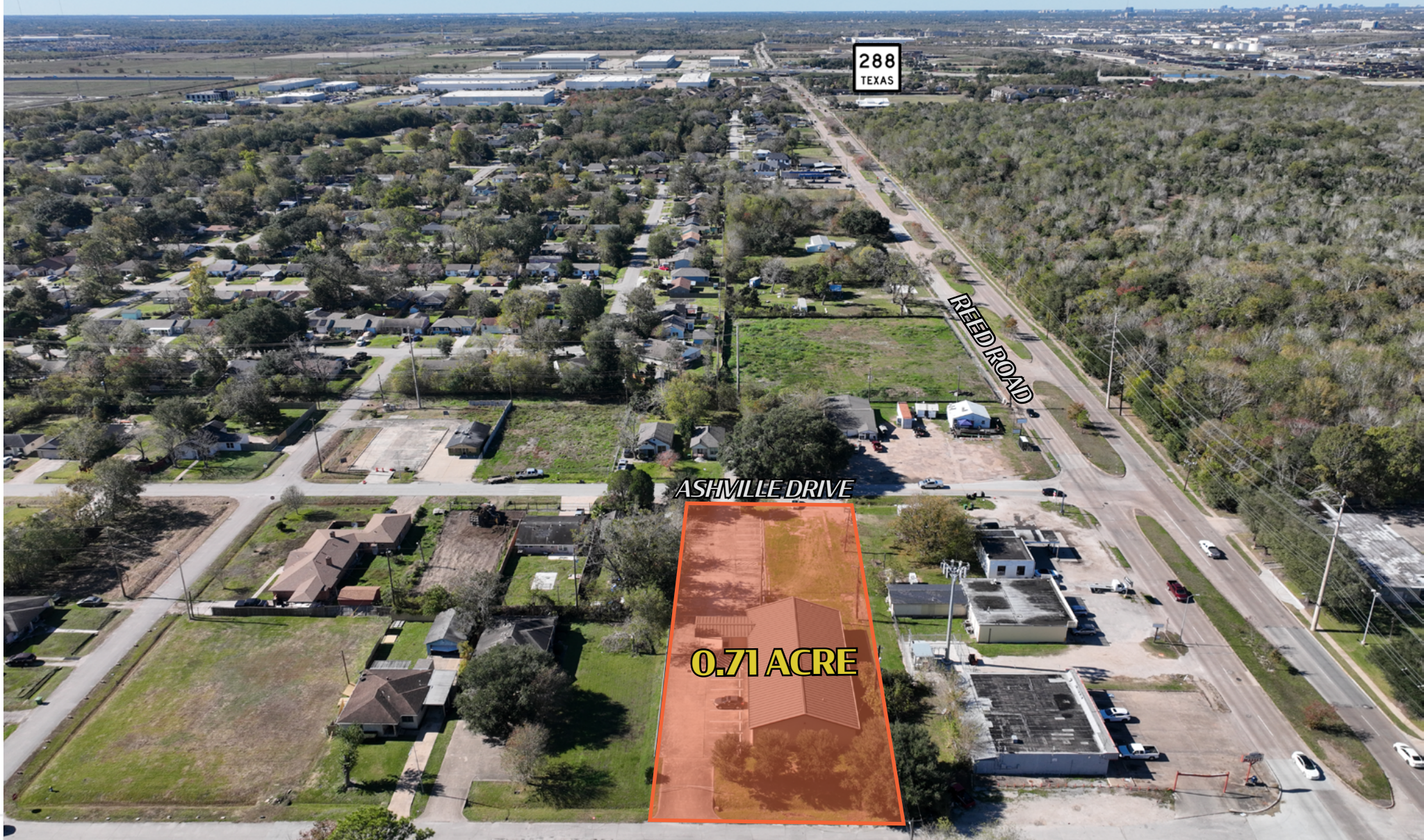
- 0.71 AC LOT WITH 4,000 SF STRUCTURE, CURRENTLY USED AS A CHURCH
- IDEAL FOR RESIDENTIAL OR RETAIL REDEVELOPMENT
- LESS THAN 10 MINS. FROM THE TEXAS MEDICAL CENTER AND NRG STADIUM
- CONTACT BROKER FOR ASKING PRICE

CBRE

QUINTEN DAVIS
+1 713 577 1625
quinten.davis@cbre.com

LOCATION OVERVIEW





QUINTEN DAVIS
SENIOR ASSOCIATE
+1 713 577 1625
quinten.davis@cbre.com

CBRE

© 2025 CBRE, Inc. All rights reserved. This information has been obtained from sources believed reliable but has not been verified for accuracy or completeness. CBRE, Inc. makes no guarantee, representation or warranty and accepts no responsibility or liability as to the accuracy, completeness, or reliability of the information contained herein. You should conduct a careful, independent investigation of the property and verify all information. Any reliance on this information is solely at your own risk. CBRE and the CBRE logo are service marks of CBRE, Inc. All other marks displayed on this document are the property of their respective owners, and the use of such marks does not imply any affiliation with or endorsement of CBRE. Photos herein are the property of their respective owners. Use of these images without the express written consent of the owner is prohibited.