



PRIME 3.361 ACRE PAD SITE

± 3.361 Acres
± 146,407 SF

For Sale

Willow Park | Highway Frontage

4900 E Interstate 20 Service Rd S, Weatherford, TX 76087

PROPERTY OVERVIEW

DESCRIPTION:

This 3.361-acre tract is one of the last prime locations fronting Interstate 20, offering unparalleled visibility with over 763 feet of highway frontage and exposure to over 98,000 vehicles daily. Ideal for a destination retail user, this site promises exceptional growth potential as the DFW Metroplex continues its westward expansion. With a high average household income of \$139,771 within a 3-mile radius and 84% owner-occupied homes, the area supports a strong consumer base.

SALES TEAM:

BRIAN HANIE

Vice President, Dallas
214-253-0789
bhanie@dominuscommercial.com

CASEY BORGERS

Vice President, Ft. Worth
817-813-5637
cborgers@dominuscommercial.com

HIGHLIGHTS:

- **Zoned Commercial**
- **Traffic Count: 98,410**
(2023)
- **Ave HH Income of \$139,771**
(3 mile radius)
- **Owner Occupied Homes: 84%**

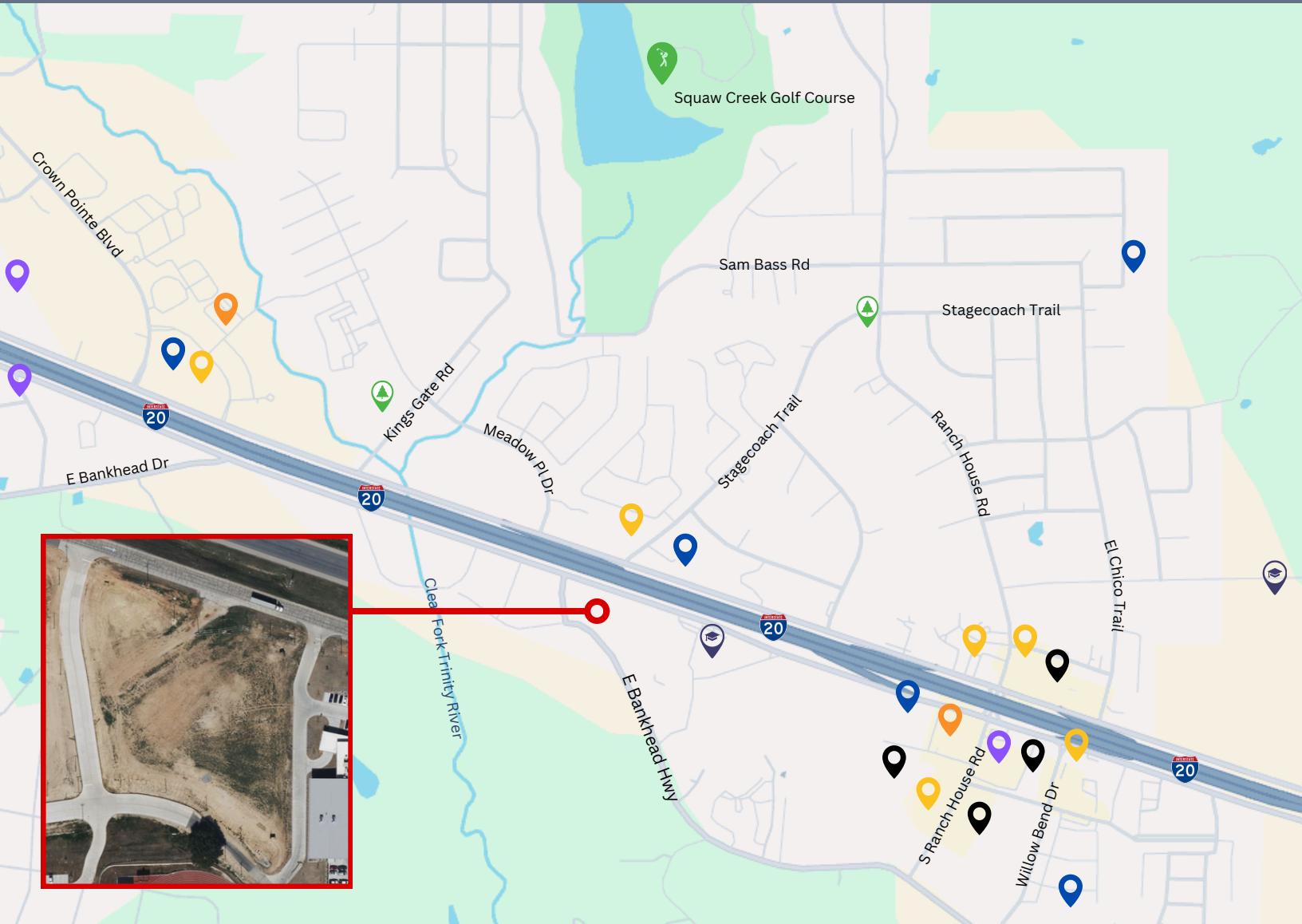


For Sale

Willow Park | Highway Frontage

Points of Interest

Brian Hanie | Casey Borgers



Hotels

- SpringHill Suites
- Baymont By Windham



Food

- Starbucks
- Railhead BBQ
- Whataburger
- Sonic
- Los Vaqueros
- Drake's Yoke
- McDonald's



Retail

- RV Outlet
- Ace Hardware
- The Shops at Willow Park
- Aledo's Athletics



Grocery

- Brookshire's
- HEB
- Walmart
- Walgreens
- Dollar General



Fuel

- Chevron
- Tiger Mart
- Shell

