

9-11 Charlton Street

Princeton, New Jersey, 08542

Office Duplex For Lease

5 Offices / 970 SF



Prime downtown Office space adjacent to Princeton University's campus and half a block from bustling Nassau Street shops, restaurants, and retail. 11 Charlton Street is a charming office building duplex with private entrance and rear porch area. The space consists of five light-flooded offices and one private bathroom, comprising half the office duplex at 9-11 Charlton Street (the occupied half is leased by The Princeton Psychological Center, and the available half is currently vacant / for lease). Constructed in 1900, the building has loads of curbside appeal and offers handsome interior finishes. The space is perfect for a business seeking a prime downtown location or any organization that does work with Princeton University. Each duplex offers approximately 970 SF and rare on-site parking is available at additional cost. Monthly rent is \$3,395 MG (exclusive of utilities).

CONTACT

Lauri Names
609-921-7655

lauri@princetonrealtymg.com



9-11 Charlton Street

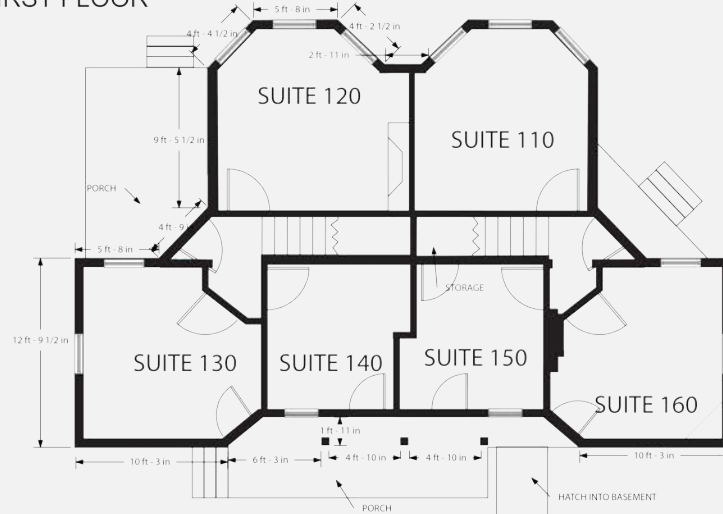
Princeton, New Jersey, 08542

Office Duplex For Lease

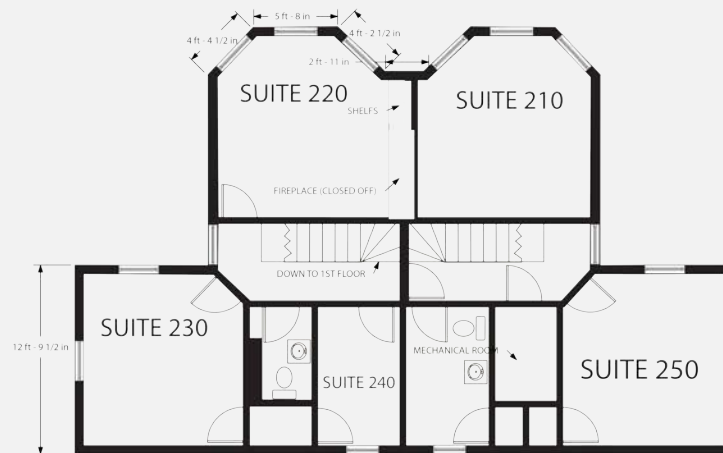
5 Offices / 970 SF

Floorplans

FIRST FLOOR



SECOND FLOOR



Information regarding this property has been compiled from sources deemed to be reliable, but no warranty or representation is made as to the accuracy thereof and it is submitted subject to errors, omissions, withdrawal from the market, change of price of prior sale without notice. This schematic is for marketing purposes only and is not to scale.

9-11 Charlton St
Office Duplex (~1,000 SF)

9/11 Charlton St.
Princeton, NJ 08542

Land and Property Management
195 Nassau Street
Princeton
New Jersey 08542
Tel: 609-921-7655
Fax: 609-921-9403



CONTACT

Lauri Names
609-921-7655
lauri@princetonrealtymg.com

