

FORMULA RETAIL WELCOME!



145 JEFFERSON

THE CROWN JEWEL OF FISHERMAN'S WHARF

SUITE 200

± 3,400^{SF}
Ground Floor
Restaurant

SUITE 600

± 6,575^{SF}
Ground Floor Retail

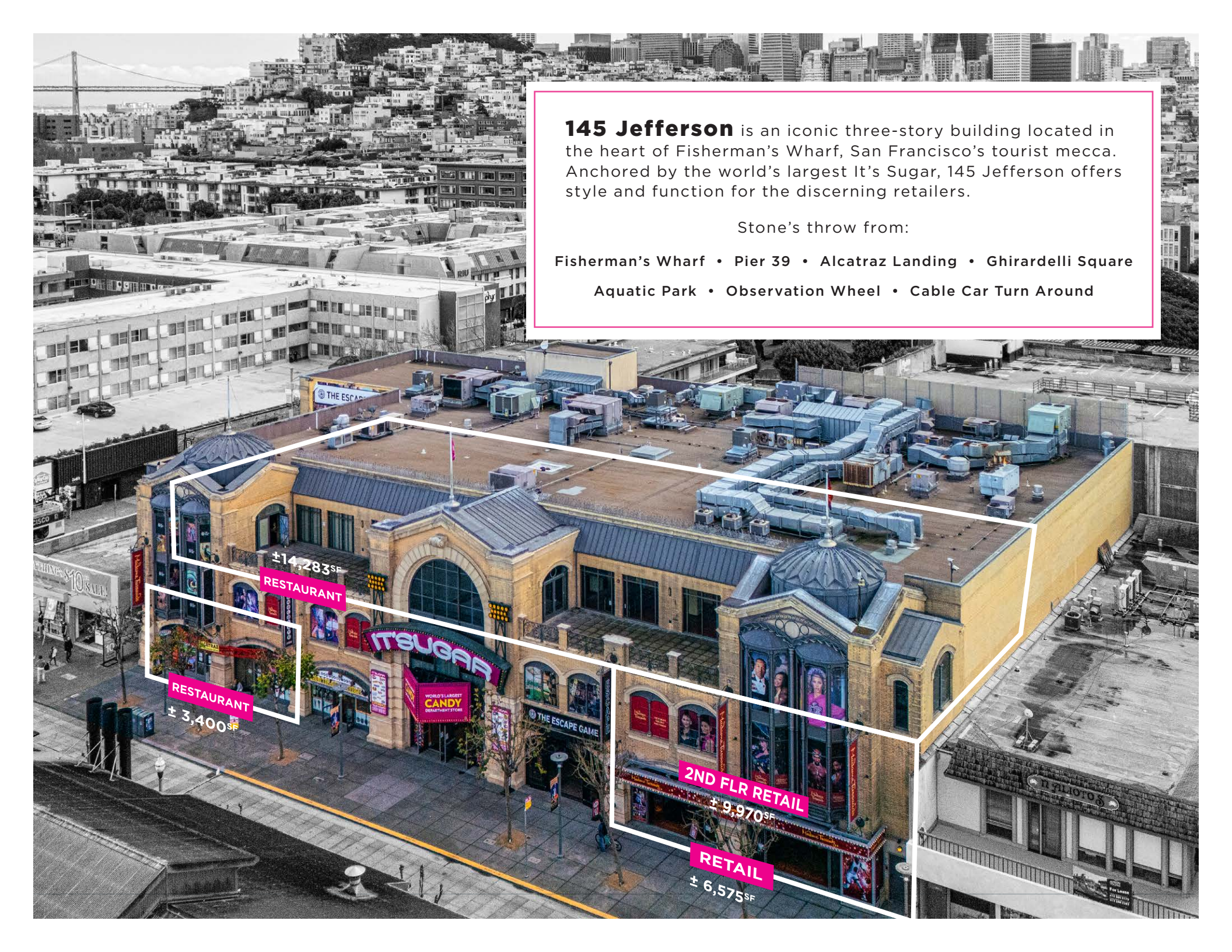
SUITE 100

±14,283^{SF}
3rd Floor Rooftop
Deck Restaurant

± 9,970^{SF}
2nd Level Retail

maven
RETAIL

ALI MCEVOY ali@mavenproperties.com | PAM MENDELSON pam@mavenproperties.com | KRISTAL CHANNICK krystal@mavenproperties.com



145 Jefferson is an iconic three-story building located in the heart of Fisherman's Wharf, San Francisco's tourist mecca. Anchored by the world's largest It's Sugar, 145 Jefferson offers style and function for the discerning retailers.

Stone's throw from:

Fisherman's Wharf • Pier 39 • Alcatraz Landing • Ghirardelli Square
Aquatic Park • Observation Wheel • Cable Car Turn Around

±14,283^{SF}
RESTAURANT

±3,400^{SF}
RESTAURANT

2ND FLR RETAIL
±9,970^{SF}

RETAIL
±6,575^{SF}

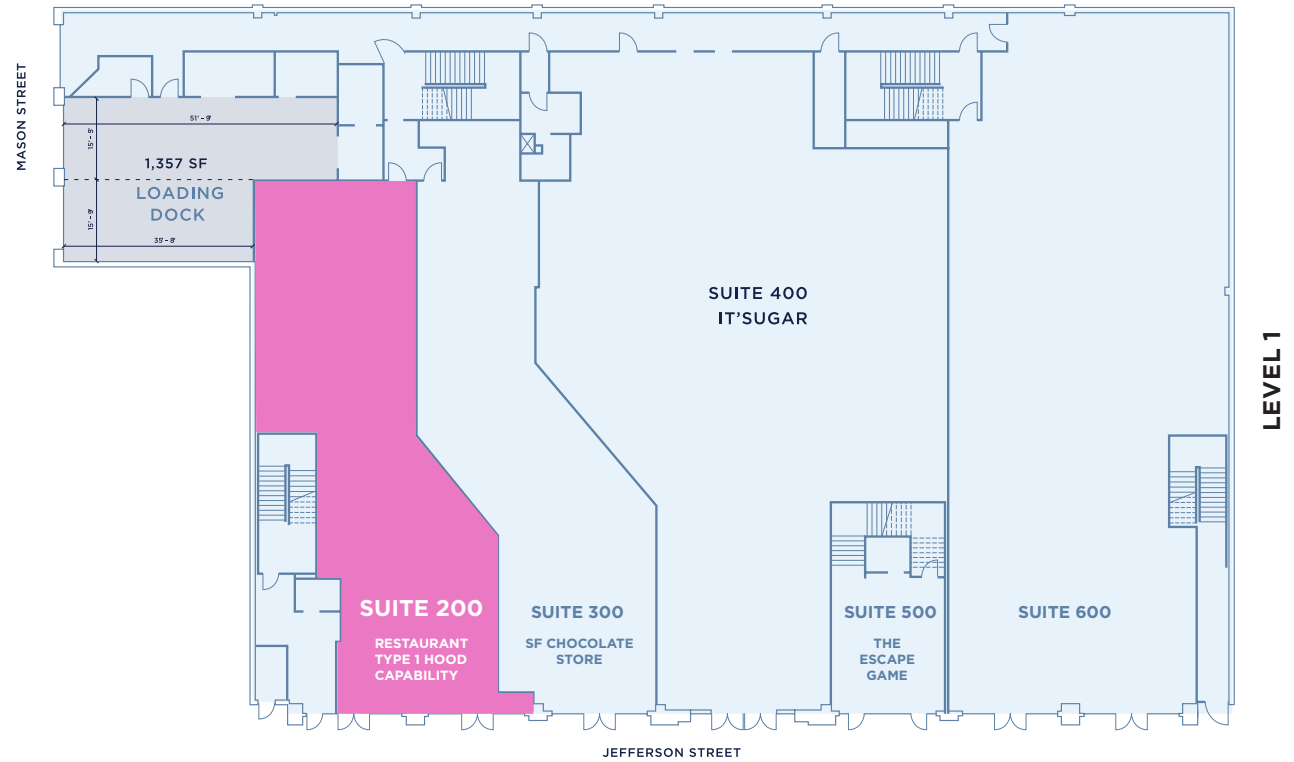
SUITE #200

TURNKEY RESTAURANT

SIZE **ASKING RENT**
± 3,400^{SF} \$103 /PSF annually

NNN
\$11.14 /PSF annually

- NOTES**
- Walk-in refrigerators and freezers
 - Rooftop 20-Ton almost new HVAC unit
 - Shafted to the roof
 - Type 1 Hood capability
 - Grease Trap
 - ADA Restrooms
 - Shared Loading Dock



SUITE #600 / 1ST & 2ND FLR WAX MUSEUM

SIZE

LEVEL 1
± 6,575^{SF}

LEVEL 2
± 9,970^{SF}

NNN

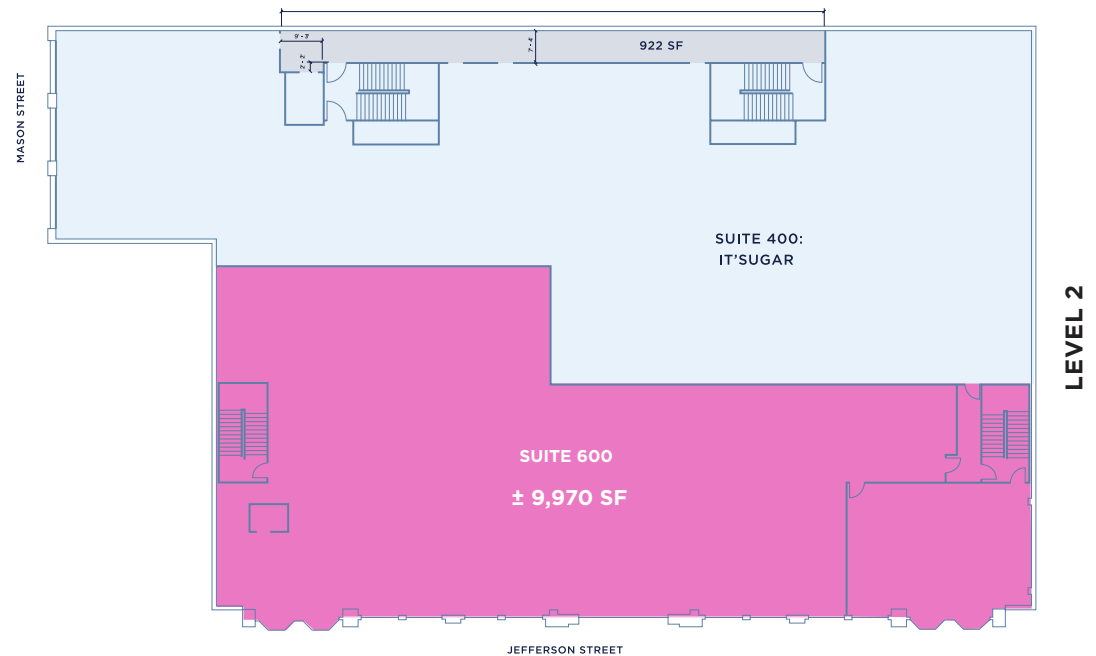
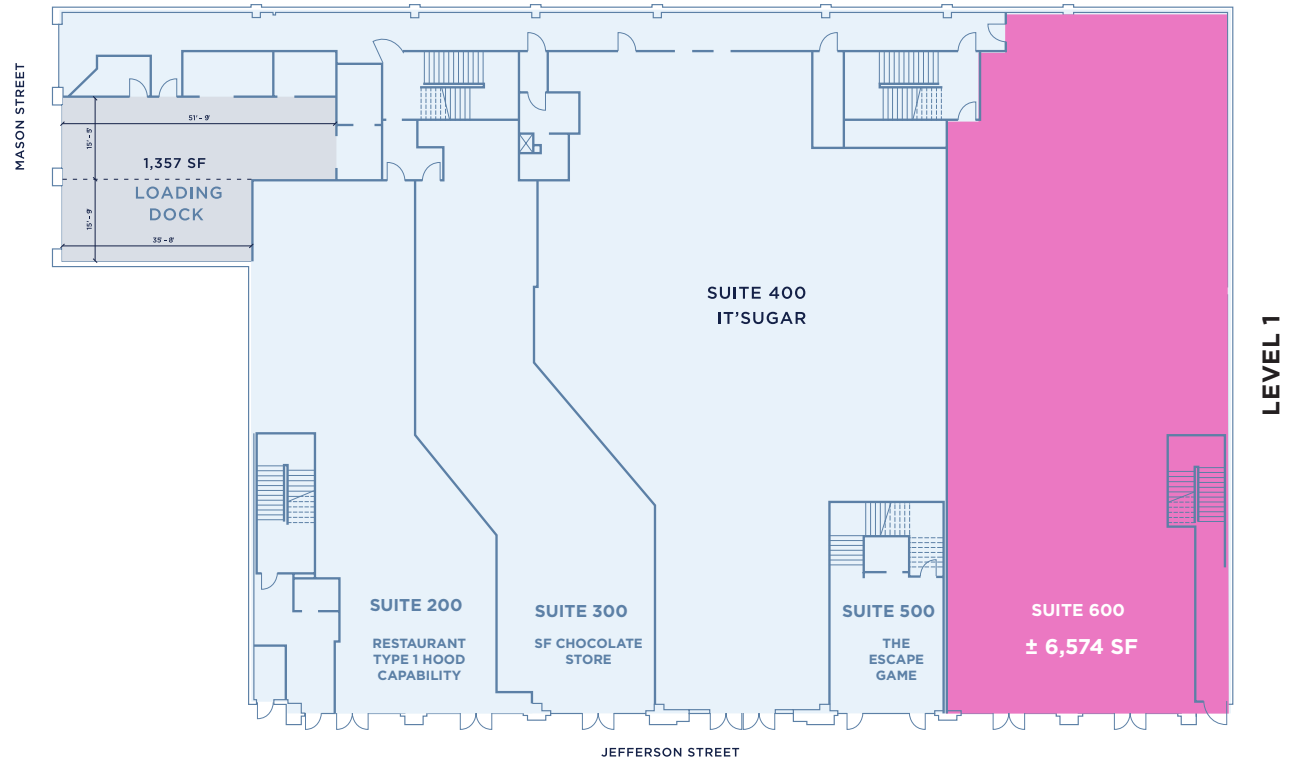
\$11.14 /PSF annually

NOTES

- Incredible branding opportunity
- Double Entrance
- Existing Elevator to second floor

ASKING RENT

(Please call for details)





SUITE #600 / 1ST & 2ND FLR

DEMISING OPTIONS

A

SIZE

LEVEL 1 ± 2,375^{SF} **LEVEL 2** ± 9,970^{SF}

TOTAL ± 12,345^{SF}

ASKING RENT

(Please call for details)

NNN

\$11.14 /PSF annually

NOTES

- Incredible branding opportunity
- Existing Elevator to second floor

B

SIZE

GROUND LEVEL ± 4,200^{SF}

ASKING RENT

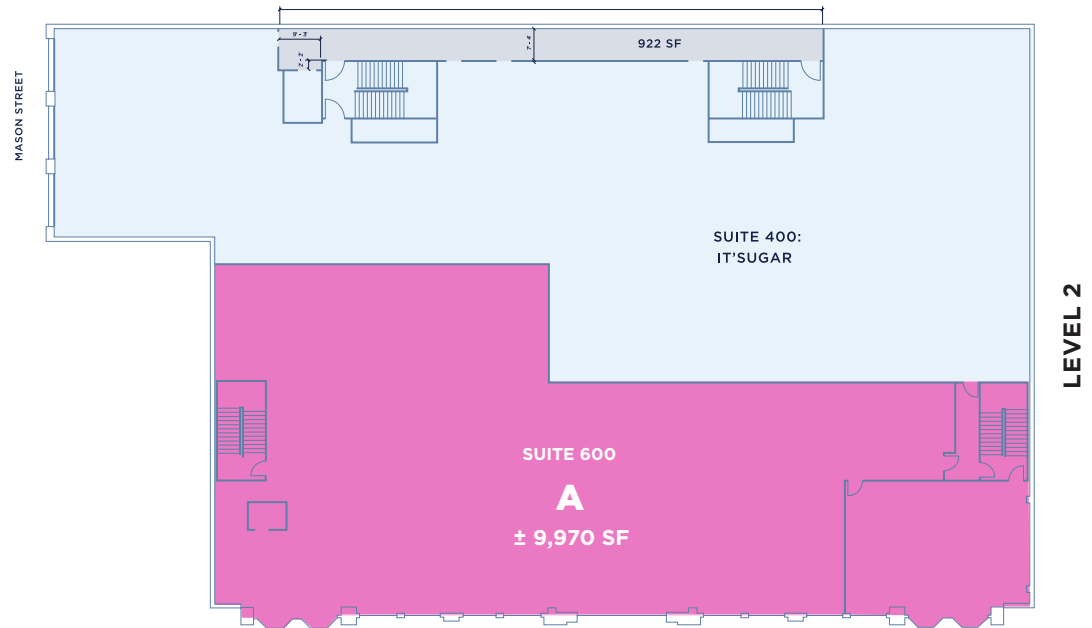
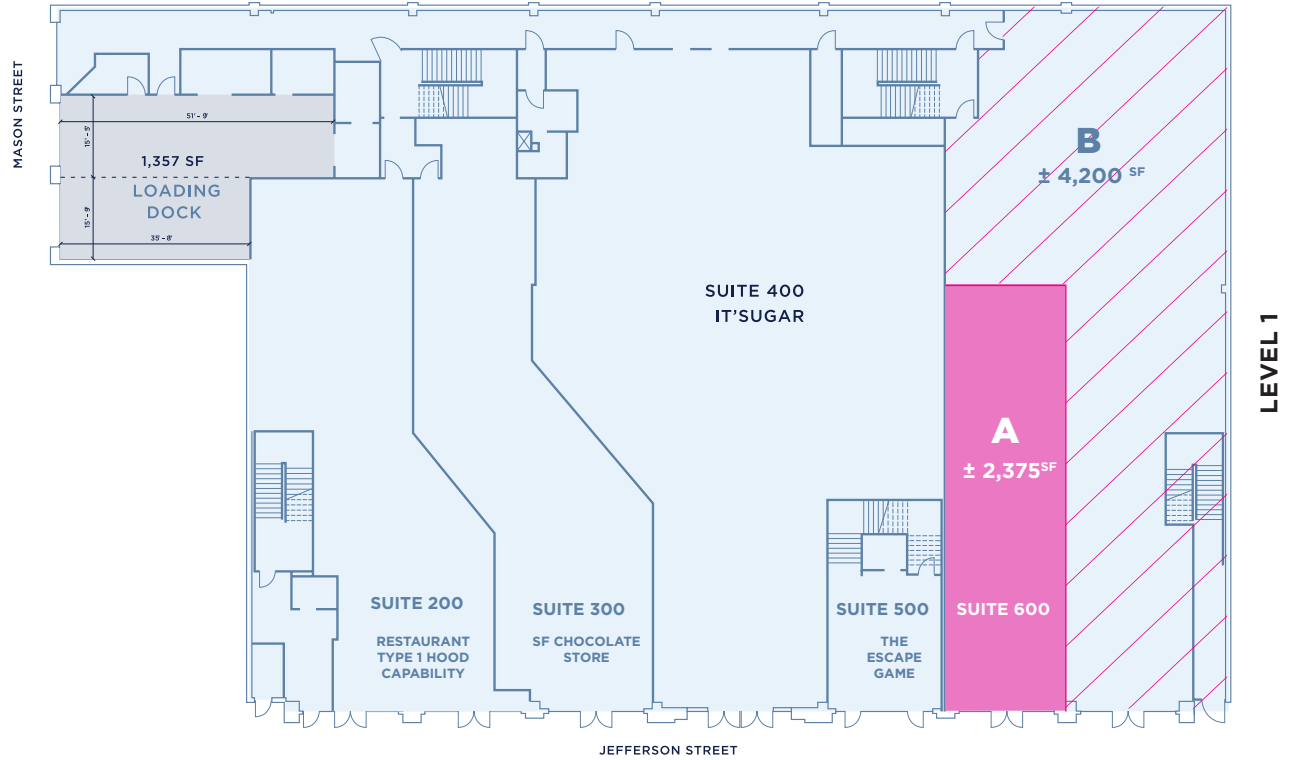
(Please call for details)

NNN

\$11.14 /PSF annually

NOTES

- Full Bay facade



SUITE #100 / 3RD FLR ROOF TOP DECK RESTAURANT

SIZE

± 14,283^{SF}

ASKING RENT

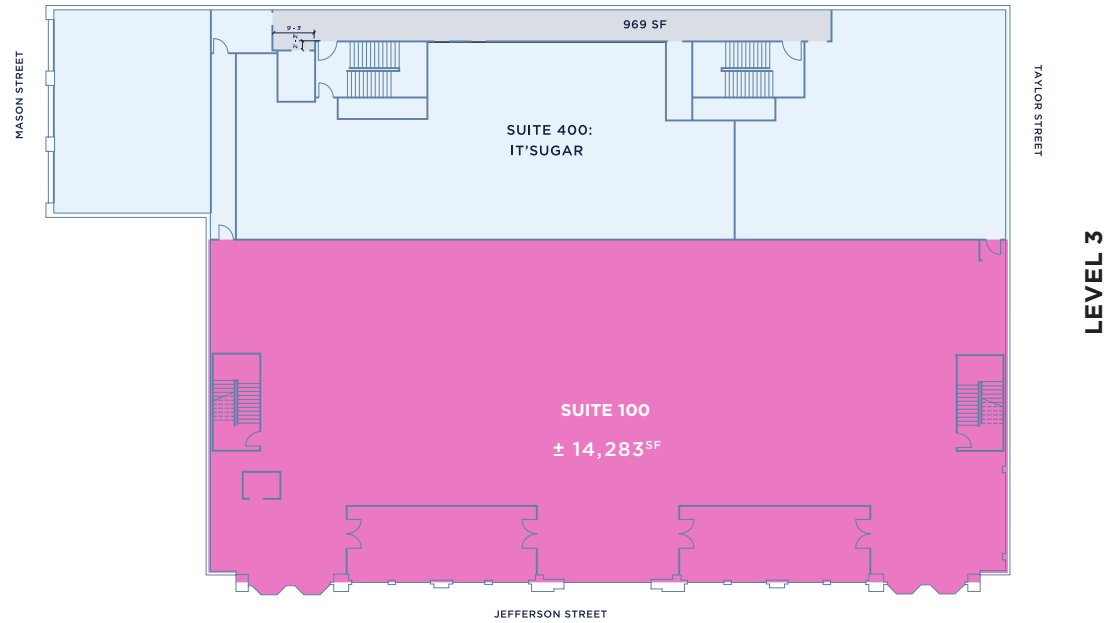
(Please call for details)

NNN

\$11.14 /PSF annually

NOTES

- Roof top restaurant opportunity!
- Dedicated ground floor entrance with exclusive elevator!





ZEPHYR HOTEL



SUPREME CRAB



NORTH POINT CRAFT COCKTAILS



PIER 39



THE FRANCISCAN



MUSEUM OF 3D ILLUSIONS



RIU HOTEL



FOG HARBOR

World-famous Fisherman's Wharf is often chosen as the starting point for tourists exploring San Francisco. It features dining, shopping, hotels, and abundant entertainment options. Families are welcomed with a haven of kid-friendly shops and engaging activities, including the Aquarium of the Bay, Pier 39, Ghirardelli Square and the newly installed Observation Wheel.

This vibrant and thriving district also holds significant importance as the central hub of San Francisco's historic fishing industry and serves as the launching point for Bay cruises and charters. The rich maritime heritage and diverse attractions make Fisherman's Wharf a captivating destination for visitors of all ages!





FWCBD INVOLVEMENT

Block by Block
Ambassadors
6am - 8pm

Overnight Patrols
8pm - 6am

Mural
Installations

Landscape
Improvements

Live Events

FISHERMAN'S WHARF COMMUNITY BENEFIT DISTRICT

The Fisherman's Wharf Community Benefit District (FWCBD) was established in 2005 to support businesses in the surrounding area.

The FWCBD has served as a catalyst for the unification of Fisherman's Wharf constituents to support a positive change to their San Francisco neighborhood through marketing initiatives, public realm projects, economic development, and advocacy.



ALI MCEVOY

office 415.404.7343
ali@mavenproperties.com
DRE #01930635

PAM MENDELSONN

office 415.404.6650
pam@mavenproperties.com
DRE #00953050

KRYSTAL CHANNICK

office 415.462.5940
krystal@mavenproperties.com
DRE #01969079

maven
RETAIL

NOTICE: This information has been secured from sources we believe to be reliable but we make no representations, warranties, express or implied, as to the accuracy of the information. Listing broker has been given enough information to provide only a preliminary interest in the property. The materials are not to be considered fact. The information contained herein is not a substitute for thorough due diligence investigation. References to square footage, zoning, use, or age are approximate. Please contact the San Francisco Planning Department to verify zoning at (415) 558-6378, as neither broker or landlord represent that this space is suitable for your use. Tenant or Buyer must verify the information at their own expense and bears all the risk for any inaccuracies. By receiving these materials you are agreeing to the disclaimers set forth herein. DRE#01878802