

LEASE

8033 S WORKSHOP AVE

Billings, MT 59106



LEASE RATE \$1,826 per month

SIZE 1,800 SF

Nathan Matelich, SIOR, CCIM

(406) 781-6889

©2023 Coldwell Banker. All Rights Reserved. Coldwell Banker Commercial® and the Coldwell Banker Commercial logos are trademarks of Coldwell Banker Real Estate LLC. The Coldwell Banker® System is comprised of company owned offices which are owned by a subsidiary of Anywhere Advisors LLC and franchised offices which are independently owned and operated. The Coldwell Banker System fully supports the principles of the Equal Opportunity Act.



**COLDWELL BANKER
COMMERCIAL**
CBS

LEASE

8033 S WORKSHOP AVE

Billings, MT 59106



Lease Rate

**\$1,826.00
PER MONTH**

OFFERING SUMMARY

Building Size:	3,600 SF
Available SF:	1,800 SF
Lot Size:	0.334 Acres
Year Built:	2023
Zoning:	Outside City Limits

PROPERTY OVERVIEW

- *1,800 SF Shop Space for Lease
- *FENCED YARD
- *Private Restroom
- *4 Qty 220 Outlets
- *14 ft Overhead Door(s)
- *16 ft Sidewalls
- *Insulated with Metal Finish Interior Walls
- *Natural Gas Heater
- *Well Lit
- *Option to add a Small Office
- *Base Rent = \$10.67 PSF
- *NNN = \$1.50 PSF

LOCATION OVERVIEW

8033 S Workshop Ave is a new construction 3,600 SF shop space for lease on the west end of Billings near 80th St & King Ave W in the Shop World industrial park. This shop space is ideal for any small business looking for extra storage or for the manufacturing or distribution space of their products.

Nathan Matelich, SIOR, CCIM
(406) 781-6889



**COLDWELL BANKER
COMMERCIAL**
CBS

LEASE

8033 S WORKSHOP AVE

Billings, MT 59106



Nathan Matelich, SIOR, CCIM
(406) 781-6889

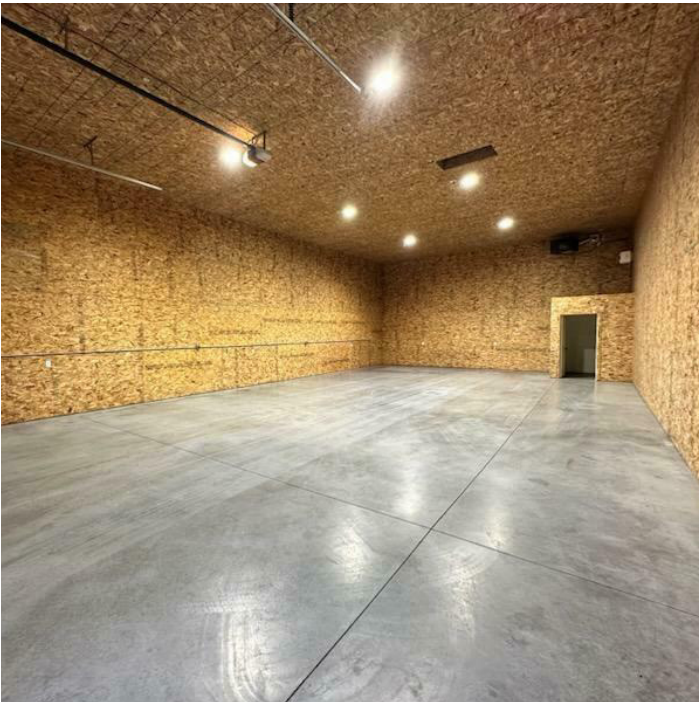


**COLDWELL BANKER
COMMERCIAL**
CBS

LEASE

8033 S WORKSHOP AVE

Billings, MT 59106



Nathan Matelich, SIOR, CCIM
(406) 781-6889



**COLDWELL BANKER
COMMERCIAL**
CBS

LEASE

8033 S WORKSHOP AVE

Billings, MT 59106



Nathan Matelich, SIOR, CCIM
(406) 781-6889

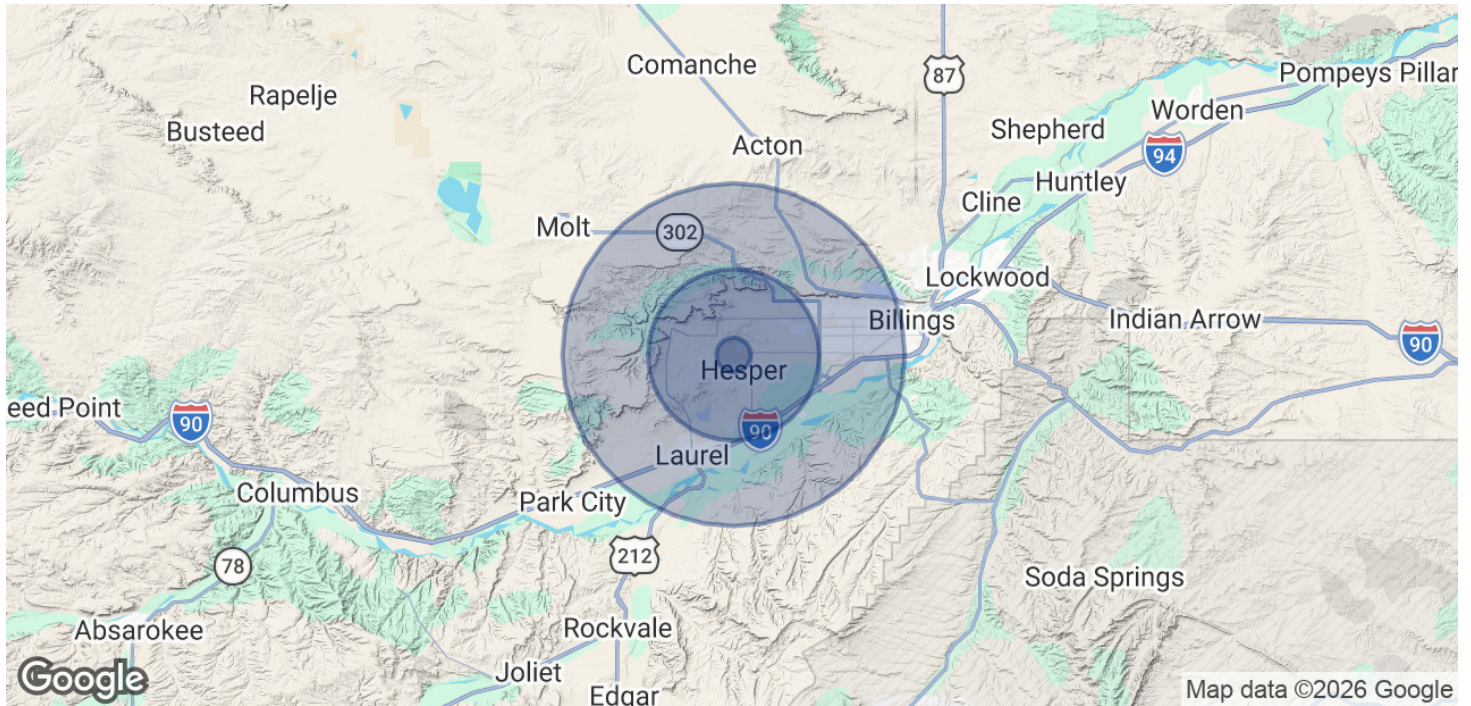


**COLDWELL BANKER
COMMERCIAL**
CBS

LEASE

8033 S WORKSHOP AVE

Billings, MT 59106



POPULATION	1 MILE	5 MILES	10 MILES
Total Population	262	15,367	93,249
Average Age	42.5	42.7	40.9
Average Age (Male)	43.2	42.3	39.4
Average Age (Female)	37.3	42.2	42.1

HOUSEHOLDS & INCOME	1 MILE	5 MILES	10 MILES
Total Households	109	6,604	42,679
# of Persons per HH	2.4	2.3	2.2
Average HH Income	\$122,661	\$137,925	\$90,152
Average House Value	\$361,612	\$398,663	\$265,379

* Demographic data derived from 2020 ACS - US Census

Nathan Matelich, SIOR, CCIM
(406) 781-6889



**COLDWELL BANKER
COMMERCIAL**
CBS