

MEDICAL SPACE FOR LEASE 3,473 RSF

3181 CORAL WAY, SUITE 400, MIAMI, FLORIDA 33145



Highlights

Full Floor: **3,473 RSF**

Medical Space: **Fully built-out**

Available: **Immediately**

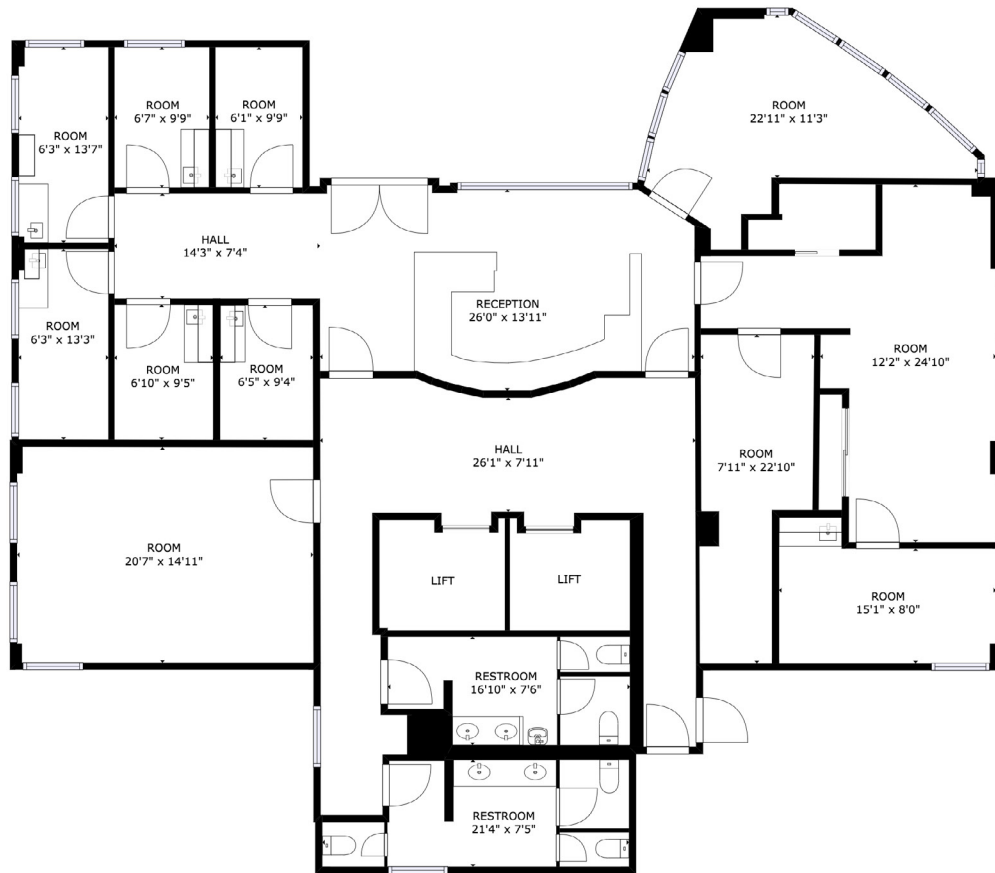
Parking: **Valet available**



Scan QR Code for
LoopNet / Costar Listing

- Rare opportunity to occupy a full floor in an established medical building.
- Located on a prominent corner of the historic urban boulevard of Coral Way comprised of several unique communities, each with a character of its own.
- The Coral Way Corridor is one of the main thoroughfares between Coral Gables and the City of Miami.
- Due to its centric location, 3181 Coral Way is in proximity to multiple reputable medical groups and clinics.
- The building is centered among the neighborhoods of Shenandoah, Silver Bluff, Vizcaya-Roads, Coral Gate, Parkdale-Lyndale, South Miami, Bryan Park and Golden Pines.
- Coral Way is accessible via the Metrorail stations of Vizcaya, Coconut Grove and Douglas Road and served by Metrobus Route 24.

FLOOR PLAN



Building Façade



Main Lobby



Reception Area



Click icon for virtual tour.

Full-floor medical space.

Waiting room, central staff area, private offices, exam rooms, and restrooms.

Valet parking.

BUILDING LOCATION



Physician's Office



Exam Rooms



Reception



Contact

Jose I. Juncadella, SIOR

Call

(305) 668-0620

Email

JJJuncadella@FairchildPartners.com

Text

(786) 229-8358

Contact

Maria Juncadella, SIOR CCIM MBA

Call

(305) 668-0620

Email

MJuncadella@FairchildPartners.com

Text

(786) 256-0979

DISCLAIMER: We obtained the information above from sources we believe to be reliable. However, we have not verified its accuracy and make no guarantee, warranty or representation about it. It is submitted subject to the possibility of errors, omissions, change of price, rental or other conditions, prior sale, lease or financing or withdraw without notice. We include projections, opinions, assumptions or estimates for example only, and they may not represent current or future performance of the property.