

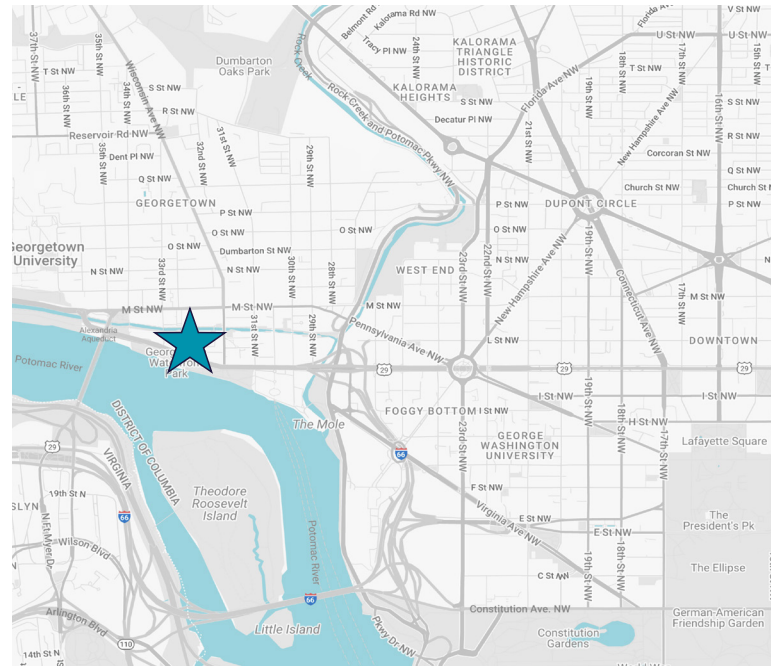


1010 WISCONSIN AVE
WASHINGTON, DC 20007

2,024 SF AVAILABLE IMMEDIATELY

SUBLEASE FEATURES

Availability	Suite 215 - 2,024 SF
Rental Rate	\$29.00 FS
Term	Through 1/31/2028
FF&E	All the furniture can be made available
Comments	Landlord will entertain a longer term lease

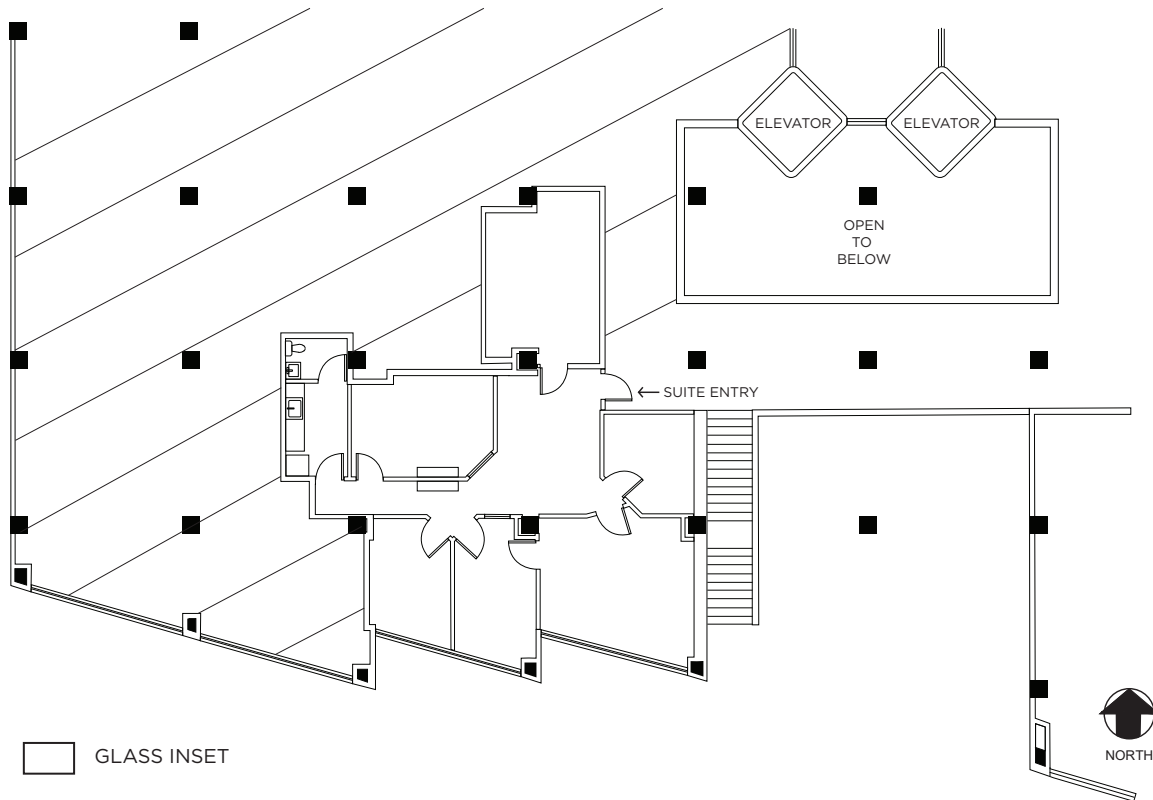


FOR MORE INFORMATION, CONTACT:

Michael B. Katcher | Vice Chairman | +1 202 739 0360 | michael.katcher@cushwake.com
John D. Skolnik | Director | +1 202 739 0364 | john.skolnik@cushwake.com

FLOOR PLAN

Suite 215 - 2,024 SF



FOR MORE INFORMATION, CONTACT:

Michael B. Katcher | Vice Chairman | +1 202 739 0360 | michael.katcher@cushwake.com

John D. Skolnik | Director | +1 202 739 0364 | john.skolnik@cushwake.com

©2025 Cushman & Wakefield. All rights reserved. The information contained in this communication is strictly confidential. This information has been obtained from sources believed to be reliable but has not been verified. NO WARRANTY OR REPRESENTATION, EXPRESS OR IMPLIED, IS MADE AS TO THE CONDITION OF THE PROPERTY (OR PROPERTIES) REFERENCED HEREIN OR AS TO THE ACCURACY OR COMPLETENESS OF THE INFORMATION CONTAINED HEREIN, AND SAME IS SUBMITTED SUBJECT TO ERRORS, OMISSIONS, CHANGE OF PRICE, RENTAL OR OTHER CONDITIONS, WITHDRAWAL WITHOUT NOTICE, AND TO ANY SPECIAL LISTING CONDITIONS IMPOSED BY THE PROPERTY OWNER(S). ANY PROJECTIONS, OPINIONS OR ESTIMATES ARE SUBJECT TO UNCERTAINTY AND DO NOT SIGNIFY CURRENT OR FUTURE PROPERTY PERFORMANCE.

SPACE PHOTOS



FOR MORE INFORMATION, CONTACT:

Michael B. Katcher | Vice Chairman | +1 202 739 0360 | michael.katcher@cushwake.com

John D. Skolnik | Director | +1 202 739 0364 | john.skolnik@cushwake.com

©2025 Cushman & Wakefield. All rights reserved. The information contained in this communication is strictly confidential. This information has been obtained from sources believed to be reliable but has not been verified. NO WARRANTY OR REPRESENTATION, EXPRESS OR IMPLIED, IS MADE AS TO THE CONDITION OF THE PROPERTY (OR PROPERTIES) REFERENCED HEREIN OR AS TO THE ACCURACY OR COMPLETENESS OF THE INFORMATION CONTAINED HEREIN, AND SAME IS SUBMITTED SUBJECT TO ERRORS, OMISSIONS, CHANGE OF PRICE, RENTAL OR OTHER CONDITIONS, WITHDRAWAL WITHOUT NOTICE, AND TO ANY SPECIAL LISTING CONDITIONS IMPOSED BY THE PROPERTY OWNER(S). ANY PROJECTIONS, OPINIONS OR ESTIMATES ARE SUBJECT TO UNCERTAINTY AND DO NOT SIGNIFY CURRENT OR FUTURE PROPERTY PERFORMANCE.