

Property Highlights

- +/- 40 acres
- Wooded, hilltop tract in West Little Rock – perfect for luxury residential development
- Sample lot layout available to illustrate potential development plan
- Great site for large-lot residential community or secluded estate-style homesite
- Zoned R-2 (residential)
- Utilities to property boundary
- Allows secluded feel, yet minutes from Cantrell road retail, office, and other commercial businesses
- Located in the heart of West Little Rock's growth corridor, with surrounding development and limited remaining tracts, this property combines privacy with prime location
- **For Sale: \$2,260,000 / \$56,500 per acre**

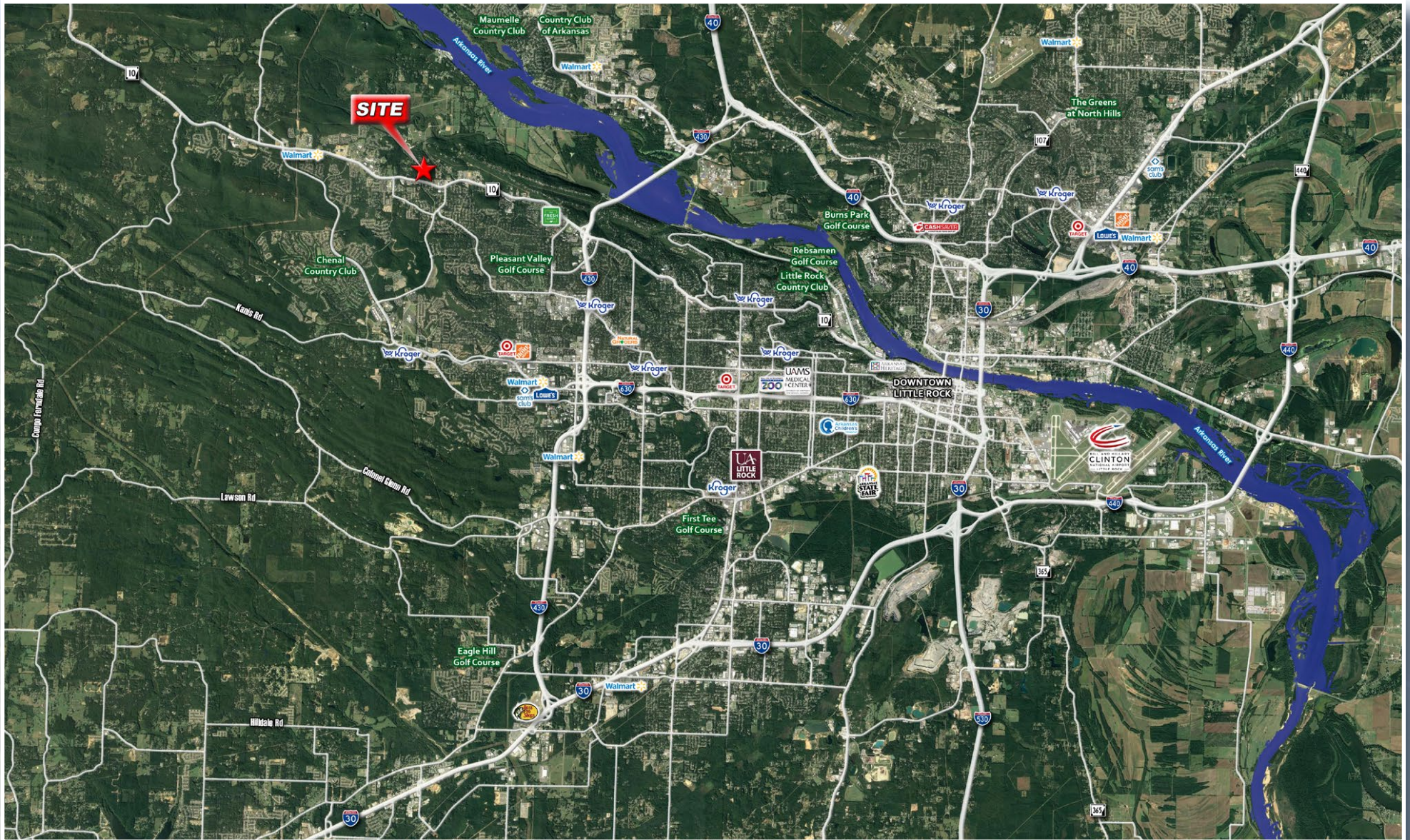
Demographics

	1 Mile	3 Mile	5 Mile
2025 Population	4,287	34,560	90,629
Daytime Population	4,238	28,213	84,563
Households	1,679	14,667	41,093
Average HH Income	\$152,071	\$171,946	\$135,402



David Hathaway | 501.529.4868 | david@hathawaygroup.com
Jeff Hathaway, CCIM, SIOR | 501.529.4969 | jeff@hathawaygroup.com





501.663.5400 | 5012 Kavanaugh Blvd, Little Rock, AR 72207 | HathawayGroup.com

Hathaway Group is the real estate broker exclusively representing the owner of the property described herein. Although the information included herein was obtained from sources deemed reliable, such information has not been verified and no representation is made as to its accuracy. All information herein is submitted subject to any errors, omissions, price changes, withdrawals without notice or other conditions, and to any special offering conditions imposed by Hathaway Group's client.