

Warehouse Space For Lease in Longmont

1240 KIMBARK STREET | LONGMONT, CO

Size: 6,047 SF

Zoning: Mixed-Use Corridor

Rate: \$7.50/SF Modified Gross

Date Available: Now

CREATIVE ASCENT

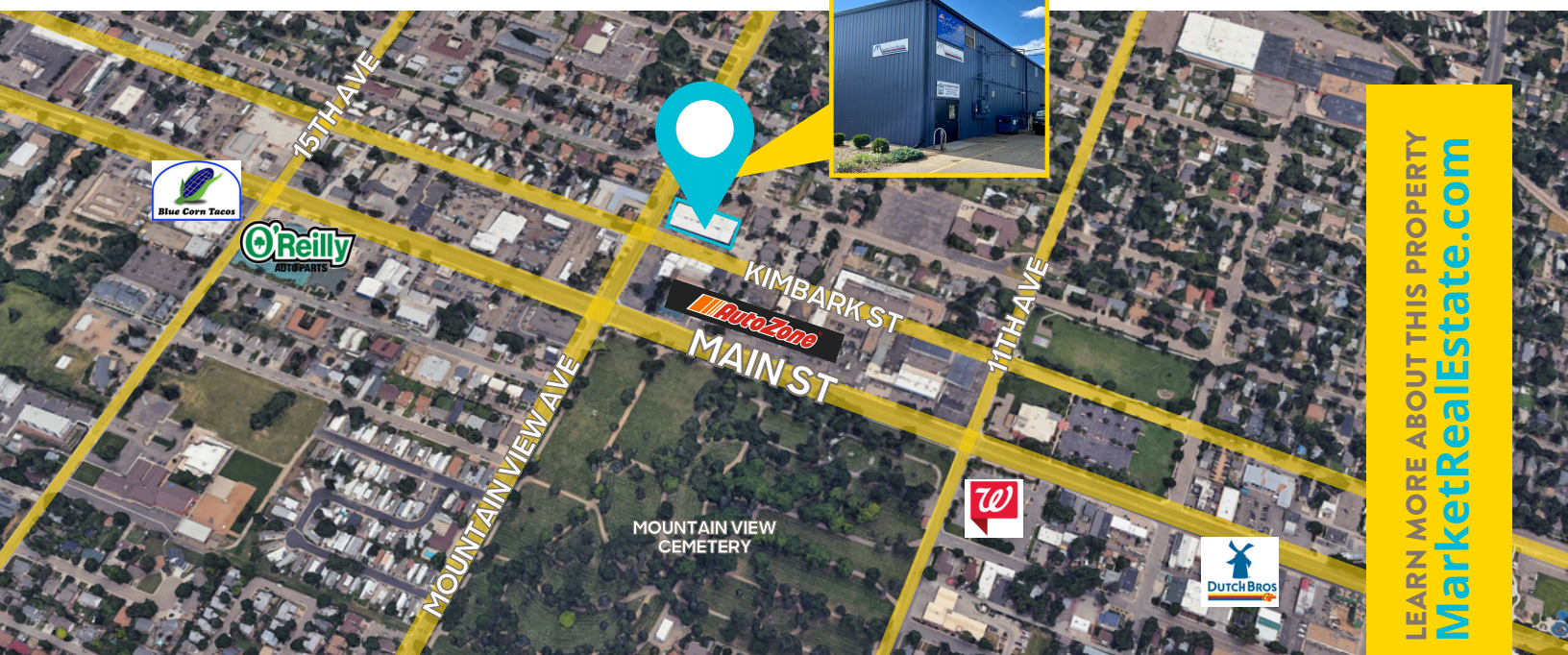
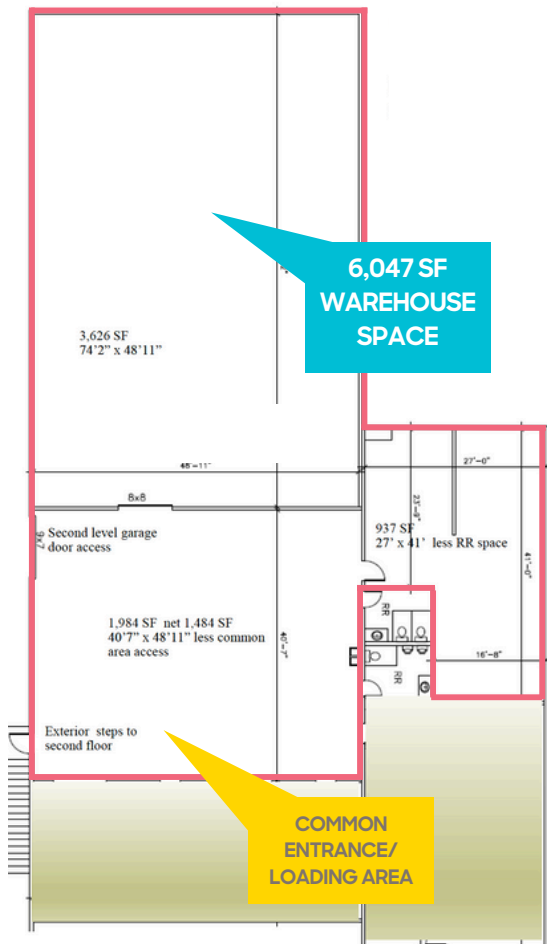
Level up your budding business with this 6,047 SF warehouse/studio space, perfectly located in the heart of Longmont. But here's a fun twist: the warehouse is upstairs, accessible by exterior stairs, and features a "fly-in" overhead door. Or, you could also just use a lift. Odd for a warehouse? Sure, but Dr. Suess said nonsense wakes up the brain cells. Enjoy flexible zoning here, and a creative space for whatever your needs may be.

PROPERTY HIGHLIGHTS

- Zoning allows for many uses
- Wide open warehouse with 48' span
- Common entrance and restrooms
- Located in the heart of Longmont at Mt. View and Kimbark Street.



LEARN MORE ABOUT THIS PROPERTY
MarketRealEstate.com



LEARN MORE ABOUT THIS PROPERTY
MarketRealEstate.com

HEIDI SCHAMBER

303 444 4344
Heidi@MarketBoulder.com

ANNIE LARNER

303 444 1344
Annie@MarketBoulder.com