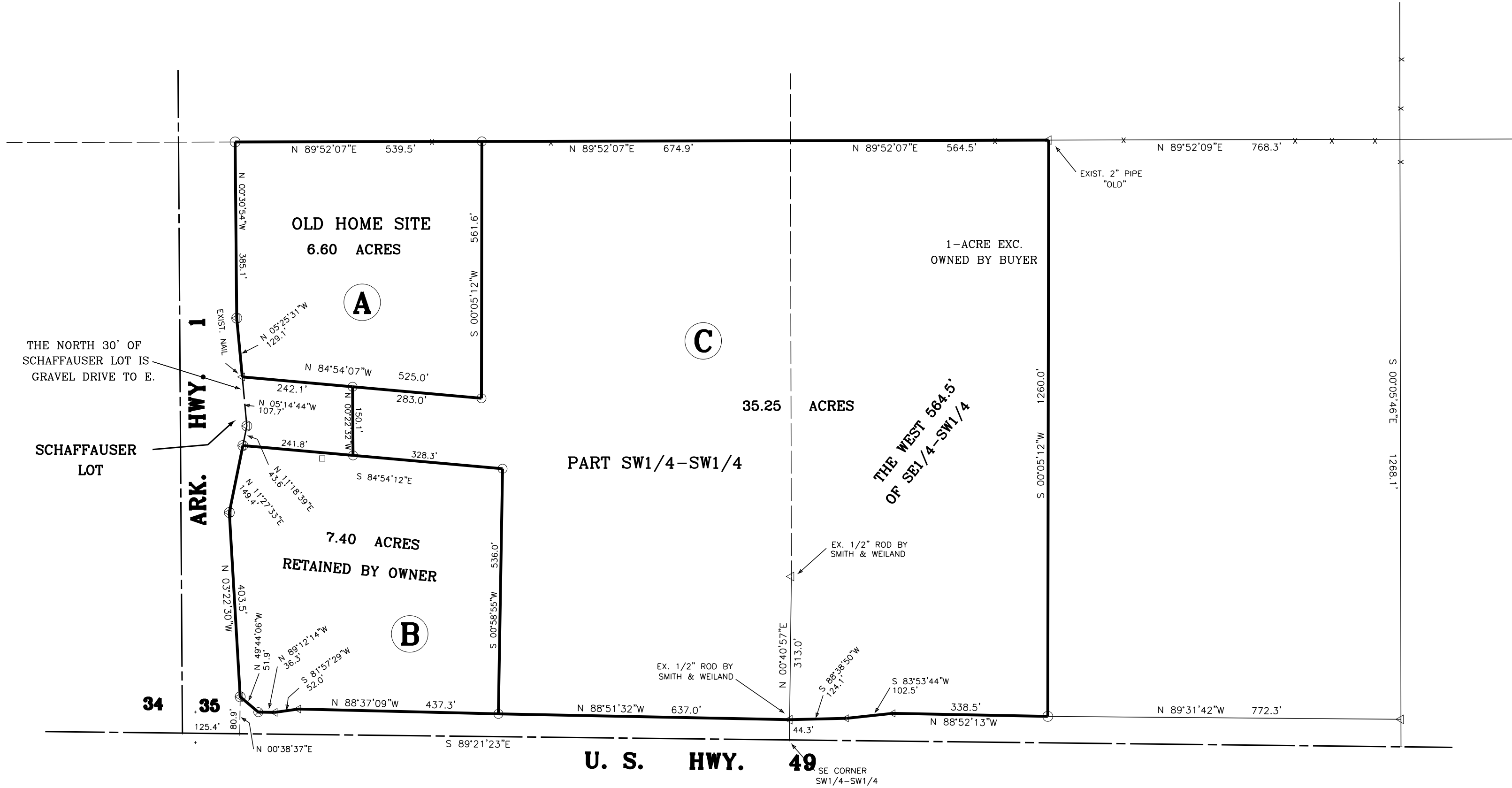


- LEGEND
- ◁ = EXIST. MARKER, AS NOTED
 - ⊙ = EXIST. ARDOT MON.
 - = SET 1/2" ROD, OR AS NOTED
 - ⊗ = SET RR SPIKE

REF.: ARDOT R/W PLANS
SURVEY BY SMITH & WEILAND
LEGAL DESCRIPTION FURNISHED
BY OWNER



TRACT A:
PART OF THE SOUTH HALF OF THE SOUTHWEST QUARTER (S1/2-SW1/4), SECTION THIRTY-FIVE (35), TOWNSHIP ONE SOUTH, RANGE THREE EAST (T1S-R3E), COUNTY OF PHILLIPS, STATE OF ARKANSAS, AND BEING MORE PARTICULARLY DESCRIBED AS FOLLOWS: COMMENCE AT THE SOUTHWEST CORNER OF SECTION 35; THENCE SOUTH 89° 21' 23" EAST, ALONG THE SOUTH LINE THEREOF, A DISTANCE OF 125.4 FEET; THENCE NORTH 00° 38' 37" EAST A DISTANCE OF 80.9 FEET TO A POINT ON THE EAST RIGHT OF WAY LINE OF ARKANSAS HIGHWAY 1; THENCE NORTH 03° 22' 30" WEST, ALONG SAID RIGHT OF WAY LINE, A DISTANCE OF 403.5 FEET; THENCE NORTH 11° 27' 33" EAST, ALONG SAID RIGHT OF WAY LINE, A DISTANCE OF 149.4 FEET; THENCE NORTH 11° 18' 39" EAST, ALONG SAID RIGHT OF WAY LINE, A DISTANCE OF 43.6 FEET; THENCE NORTH 05° 14' 44" WEST, ALONG SAID RIGHT OF WAY LINE, A DISTANCE OF 107.7 FEET FOR A POINT OF BEGINNING; THENCE NORTH 05° 25' 31" WEST, ALONG SAID RIGHT OF WAY LINE, A DISTANCE OF 129.1 FEET; THENCE NORTH 00° 30' 54" WEST, ALONG SAID RIGHT OF WAY LINE, A DISTANCE OF 385.1 FEET; THENCE NORTH 89° 52' 07" EAST A DISTANCE OF 539.5 FEET; THENCE SOUTH 00° 05' 12" WEST A DISTANCE OF 561.6 FEET; THENCE NORTH 84° 54' 07" WEST A DISTANCE OF 525.0 FEET TO THE POINT OF BEGINNING CONTAINING 6.60 ACRES.

TRACT B:
PART OF THE SOUTH HALF OF THE SOUTHWEST QUARTER (S1/2-SW1/4), SECTION THIRTY-FIVE (35), TOWNSHIP ONE SOUTH, RANGE THREE EAST (T1S-R3E), COUNTY OF PHILLIPS, STATE OF ARKANSAS, AND BEING MORE PARTICULARLY DESCRIBED AS FOLLOWS: COMMENCE AT THE SOUTHWEST CORNER OF SECTION 35; THENCE SOUTH 89° 21' 23" EAST, ALONG THE SOUTH LINE THEREOF, A DISTANCE OF 125.4 FEET; THENCE NORTH 00° 38' 37" EAST A DISTANCE OF 80.9 FEET TO A POINT ON THE EAST RIGHT OF WAY LINE OF ARKANSAS HIGHWAY 1 FOR A POINT BEGINNING; THENCE NORTH 03° 22' 30" WEST, ALONG SAID RIGHT OF WAY LINE, A DISTANCE OF 403.5 FEET; THENCE NORTH 11° 27' 33" EAST, ALONG SAID RIGHT OF WAY LINE, A DISTANCE OF 149.4 FEET; THENCE SOUTH 84° 54' 12" EAST A DISTANCE OF 570.1 FEET; THENCE SOUTH 00° 58' 55" WEST A DISTANCE OF 536.0 FEET TO THE NORTH RIGHT OF WAY LINE OF U.S. HIGHWAY 49; THENCE NORTH 88° 37' 09" WEST, ALONG SAID RIGHT OF WAY LINE, A DISTANCE OF 437.3 FEET; THENCE SOUTH 81° 57' 29" WEST, ALONG SAID RIGHT OF WAY LINE, A DISTANCE OF 52.0 FEET; THENCE NORTH 89° 12' 14" WEST, ALONG SAID RIGHT OF WAY LINE, A DISTANCE OF 36.3 FEET; THENCE NORTH 49° 44' 06" WEST, ALONG SAID RIGHT OF WAY, A DISTANCE OF 51.9 FEET TO THE POINT OF BEGINNING CONTAINING 7.40 ACRES.

TRACT C:
PART OF THE SOUTH HALF OF THE SOUTHWEST QUARTER (S1/2-SW1/4), SECTION THIRTY-FIVE (35), TOWNSHIP ONE SOUTH, RANGE THREE EAST (T1S-R3E), COUNTY OF PHILLIPS, STATE OF ARKANSAS, AND BEING MORE PARTICULARLY DESCRIBED AS FOLLOWS: COMMENCE AT THE SOUTHWEST CORNER OF SECTION 35; THENCE SOUTH 89° 21' 23" EAST, ALONG THE SOUTH LINE THEREOF, A DISTANCE OF 125.4 FEET; THENCE NORTH 00° 38' 37" EAST A DISTANCE OF 80.9 FEET TO A POINT ON THE EAST RIGHT OF WAY LINE OF ARKANSAS HIGHWAY 1; THENCE NORTH 03° 22' 30" WEST, ALONG SAID RIGHT OF WAY LINE, A DISTANCE OF 403.5 FEET; THENCE NORTH 11° 27' 33" EAST, ALONG SAID RIGHT OF WAY LINE, A DISTANCE OF 149.4 FEET; THENCE SOUTH 84° 54' 12" EAST A DISTANCE OF 283.0 FEET; THENCE NORTH 00° 05' 12" WEST A DISTANCE OF 561.6 FEET; THENCE NORTH 89° 52' 07" EAST A DISTANCE OF 1239.4 FEET; THENCE SOUTH 00° 05' 12" WEST A DISTANCE OF 1260.0 FEET TO THE NORTH RIGHT OF WAY LINE OF U.S. HIGHWAY 49; THENCE NORTH 88° 52' 13" WEST, ALONG SAID RIGHT OF WAY LINE, A DISTANCE OF 338.5 FEET; THENCE SOUTH 83° 53' 44" WEST, ALONG SAID RIGHT OF WAY LINE, A DISTANCE OF 102.5 FEET; THENCE SOUTH 88° 38' 50" WEST, ALONG SAID RIGHT OF WAY LINE, A DISTANCE OF 124.1 FEET; THENCE NORTH 88° 51' 32" WEST, ALONG SAID RIGHT OF WAY, A DISTANCE OF 637.0 FEET; THENCE NORTH 00° 58' 55" EAST A DISTANCE OF 536.0 FEET; THENCE NORTH 84° 54' 12" WEST A DISTANCE OF 328.5 FEET TO THE POINT OF BEGINNING CONTAINING 35.25 ACRES.

I, DONALD E. SHEFFER, R.L.S., ARK. REG. 993, HEREBY CERTIFY THIS AS BEING THE RESULTS OF A FIELD SURVEY PERFORMED BY ME, OR UNDER MY SUPERVISION, ON MAY 16, 2019, AND IS SUBJECT TO UNNOTED EASEMENTS OF RECORD, OR NOT OF RECORD, PUBLIC UTILITY EASEMENTS, PRIVATE EASEMENTS AND MISCELLANEOUS EASEMENTS.

DONALD E. SHEFFER, R.L.S., ARK. REG. 993
DATE: MAY 16, 2019

DELTA SURVEY COMPANY, INC.			
226 WEST CEDAR		BRINKLEY, ARKANSAS	
BASIS OF BEARING:	ASSUME PER GPS	SCALE: 1" = 200'	DRAWN BY: DES
PREPARED FOR:			
MS. SUE LEIFER BARTON, ARKANSAS			
DESCR: PART S1/2-SW1/4, SECTION 35, T1S-R3E, PHILLIPS COUNTY, ARKANSAS.			
DATE: 16 MAY 19		REVISED:	
FILE NO:		500-01S-03E-0-35-300-54-0993	
S2019			