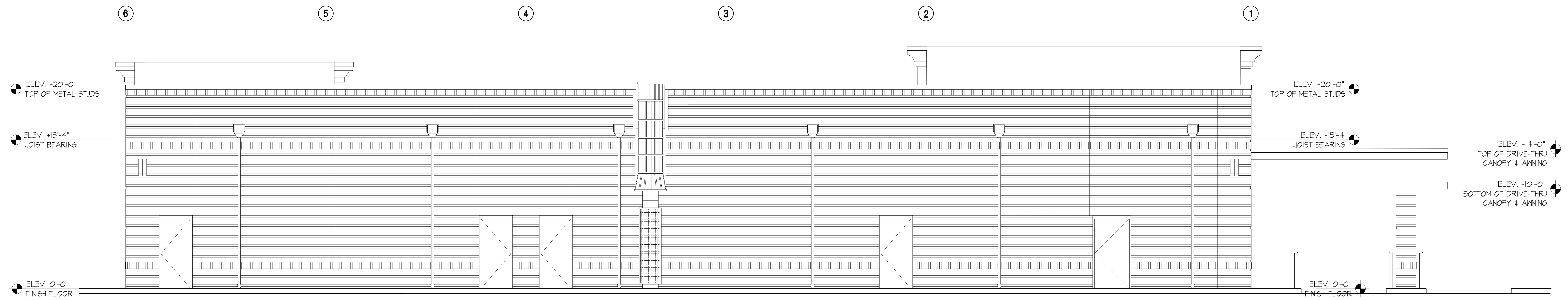


PRELIMINARY SOUTH ELEVATION
1/4" = 1'-0"



PRELIMINARY SOUTH ELEVATION
1/4" = 1'-0"

PRELIMINARY ELEVATIONS

PRELIMINARY

DOLLAR BANK & RETAIL SHOPS
 BRENNEMAN FARM MARKETPLACE
 PRINCESS ANNE ROAD
 VIRGINIA BEACH, VIRGINIA 23462

ARCHITECT:
 RANDOLPH T. HICKS, AIA
 2006 OLD GREENBRIER ROAD
 SUITE 9
 CHESAPEAKE, VIRGINIA 23320
 PHONE: (757) 288-8354
 EMAIL: randolph@aol.com

ISSUED FOR:
 OWNER REVIEW

DATE:
 07/04/19

A2.0