

FOR SALE



9,000 SF Industrial Building For Sale

5

**INDUSTRIAL ROAD
ST. MARYS, ONTARIO**

WHITNEY
Commercial Real Estate Services

Industrial Building on 0.50 Acres

Great opportunity to acquire a 9,000 SF industrial building centrally located between London, Woodstock, Stratford and Waterloo Region.

The property features dock level and drive-in loading, a clear span warehouse / shop area and multiple private offices. Zoning permits for a wide variety of uses including automotive repair, contractors shop and machine shop.

A clean environmental report was recently completed.

AVAILABLE SPACE | 9,000 SF

LAND AREA | 0.502 Acres

ASKING PRICE | \$2,025,000

TAXES | \$10,136.58 (2024)

ZONING | M1

CLEAR HEIGHT | 15'9"

LOADING DOOR | 1 - 8' x 9' Dock Level Door
| 1 - 14' x 12' Drive-in Door



PERMITTED USES

- Assembly Hall
- Auction Establishment
- Automobile Parts Supply Store
- Automobile Rental Establishment
- Automotive Gas Bar
- Automotive Repair Establishment
- Automotive Service Station
- Automotive Washing Establishment
- Caterer's Establishment
- Cold Storage Locker Plant
- Contractors Yard or Shop
- Convenience Business Service Establishment
- Convenience or Variety Store
- Equipment Sales and Rental Businesses
- Factory Outlet
- Farm Implement Sales and Service Establishment
- Fuel Pump Island

- Furniture Refinishing and Woodworking Shop
- Kennel
- Laboratory and Research Facility
- Landscape Supply Outlet
- Laundromat
- Laundry Plant
- Machine Shop
- Mini-Storage Facility
- Parking Area
- Recycling Depot
- Rental Shop
- Repair Shop
- Self-Storage Establishment
- Wholesale Establishment
- Pet Hotel
- Warehouse



Ample Parking



Drive-in and Truck Level Doors



Centrally Located Between Cities

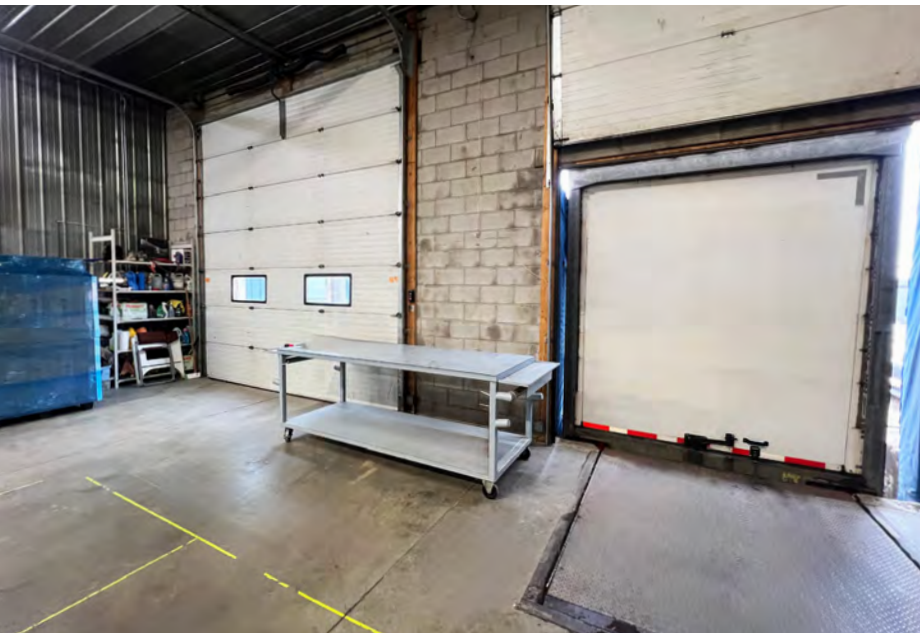
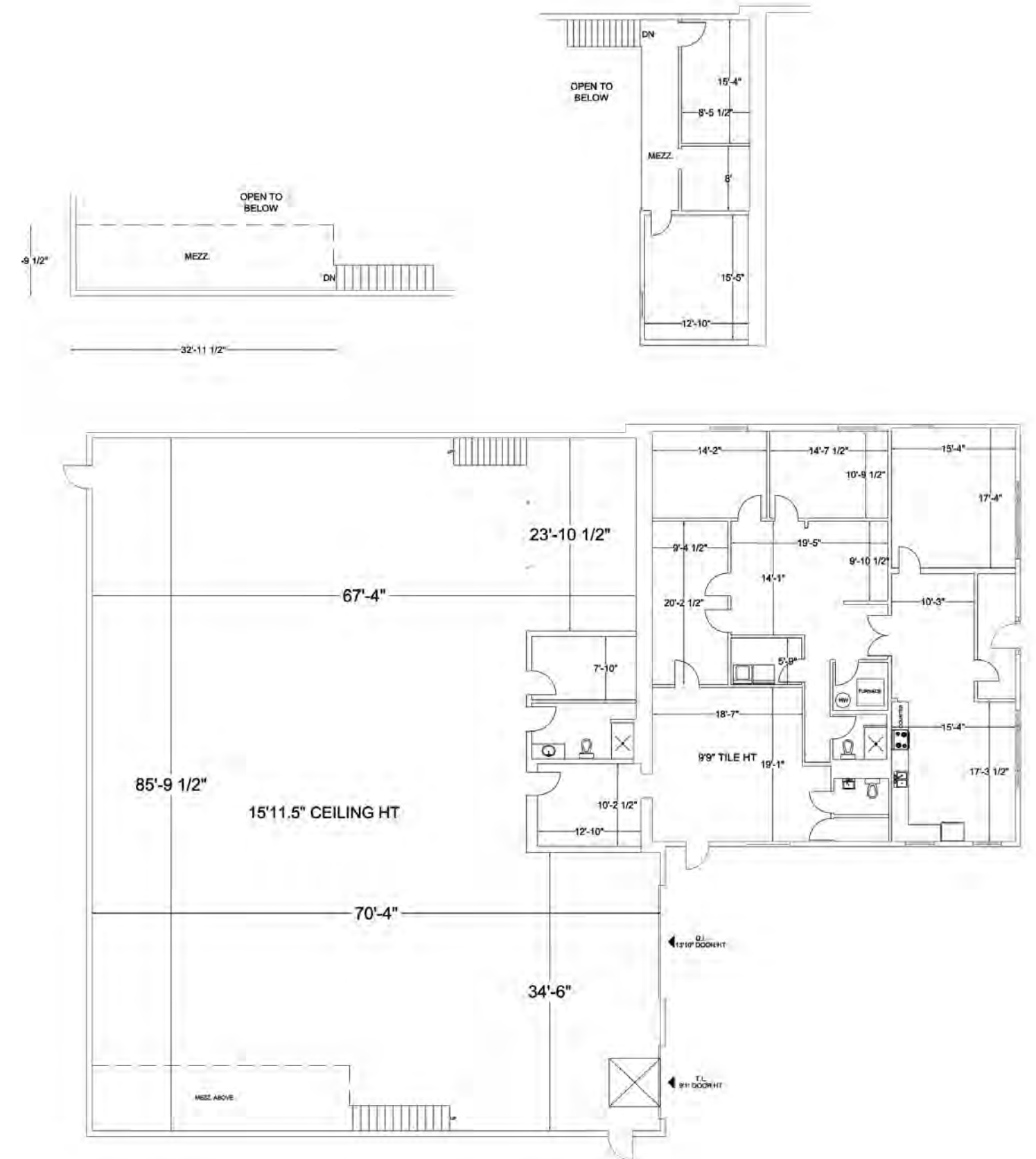


5 Minutes to HWY 7



FLOOR PLAN

Total Area - 9,000 SF





ST. MARYS GOLF & COUNTRY CLUB

ESSO

QUEEN ST E

MCDONALD'S



INDUSTRIAL RD

DISTANCE FROM 5 INDUSTRIAL RD, ST. MARYS
STRATFORD - 14 KM WOODSTOCK - 45 KM
LONDON - 35 KM WATERLOO REGION - 50 KM
INGERSOLL - 35 KM

Contact Listing Agents for more information.



Michael Lambert*, SIOR
President, 2x Olympian
519.590.0286
michael.lambert@whitneyre.com



Matthew Hayward
Senior Sales Representative
519.270.4691
matthew.hayward@whitneyre.com



Jack Hayward
Sales Representative
519.270.3314
jack.hayward@whitneyre.com

**Broker *Sales Representative



WHITNEY & Company Realty Limited, Brokerage
103 Bauer Place, Suite 2
Waterloo, Ontario N2L 6B5
1.519.746.6300 | www.whitneyre.com

www.whitneyre.com

Although the information contained within is from sources believed to be reliable, no warranty or representation is made as to its accuracy being subject to errors, omissions, conditions, or other changes without notice and should not be relied upon without independent verification. Property outlines are approximate and may not accurately depict actual boundary lines. WHITNEY & Company Realty Limited, Brokerage © 08/2024