

MEDIA PARK

SANTA
MONICA

FOR LEASE

1,998 - 8,992 SF IN THE HEART OF SANTA MONICA

AVISON
YOUNG

adison
DADTNIEDC



AVAILABILITY

1,998 - 8,992 RSF

TERM

3-10 years

RENT **REDUCED RATE!** ~~\$2.95~~ \$2.50 /per SF / NNN

PARKING

3 / 1,000 RSF
\$225 Per Month Reserved
\$175 Per Month Unreserved
\$350 Per Month Tandem Reserved

THE IDEAL **CAMPUS** ENVIRONMENT



Low density building
and campus-style
environment



Private patios
and outdoor
areas for each suite



Reserved, open-air
parking spaces directly
in front of suite



Spacious layouts and
a great mix of private
offices and open plans





AT THE **CENTER** OF IT ALL

1815C CENTINELA

1845 CENTINELA

3220A NEBRASKA

3226 NEBRASKA

NET RENTABLE AREA

4,029 RSF

8,992 RSF

1,998 RSF

3,135 RSF

SPACE FEATURES

High Ceilings	20' High Ceilings in Some Areas	Two-Floor Design	Two-Floor Design
Large Open Area		Fully Furnished	5 Private Offices
Private Offices	Private Offices and Open Area	5 Private Offices	High Ceilings
Kitchen Area	Beautiful Kitchen with	High Ceilings	Skylights
Concrete Floors	Outdoor Patio	Skylights	2 Private Restrooms
Private Restroom	Skylights Throughout	2 Private Restrooms	Private Patio
	Stage/ Screening Room	Private Patio	

TOTAL 4,029 SF

High end creative space with high ceilings and a mix of open plan and private offices

SECOND FLOOR



GROUND FLOOR

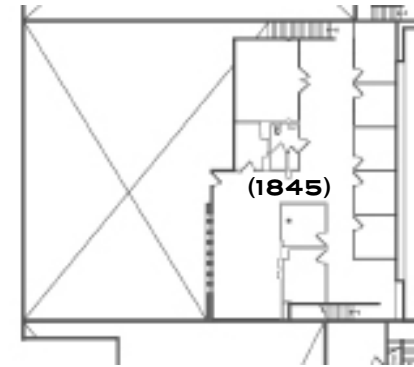




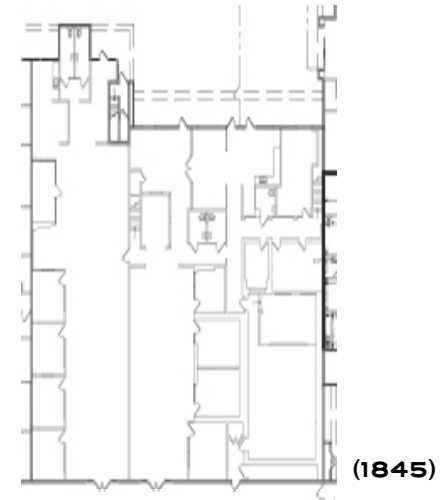
TOTAL 8,992 SF

Production Space with Numerous Edit Bays,
Stage/Screening Room with 20' Ceilings and Private Patio

SECOND FLOOR



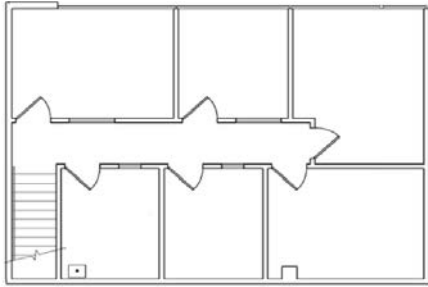
GROUND FLOOR



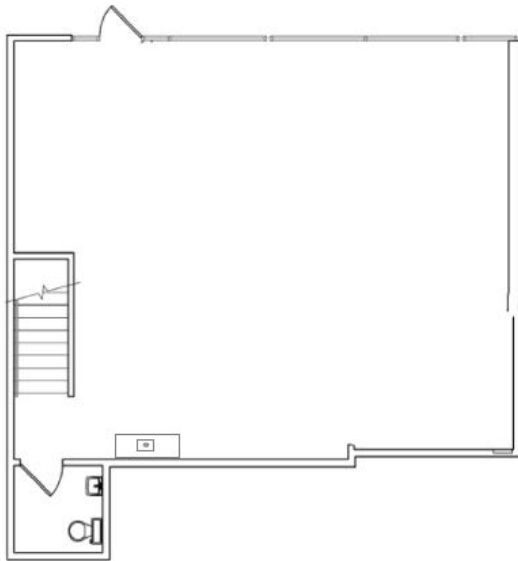
TOTAL 1,998 SF

Two-Floors, 5 Private Offices, High Ceilings,
Private Patio, Skylight, 2 Private Restrooms

SECOND FLOOR



GROUND FLOOR

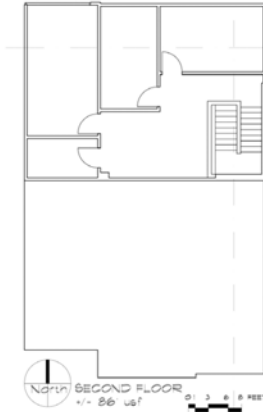




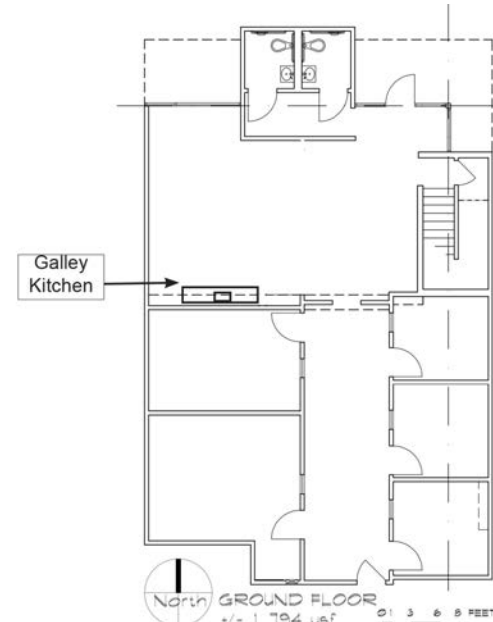
TOTAL 3,135 SF

5 Offices, Conference Room, Kitchen, and Open Area

SECOND FLOOR



GROUND FLOOR



MEDIA PARK

SANTA MONICA

FOR MORE INFORMATION:

MITCH STOKES

310.780.6909

mitch.stokes@avisonyoung.com

License No. 01037526

JOE KING

310.442.3375

jking@madisonpartners.net

License No. 01195833

**AVISON
YOUNG**

**madison
PARTNERS**