



BOSSIER CORNERS SHOPPING CENTER

2001 AIRLINE DR. , BOSSIER CITY, LA 71111

- Located at the Corner of the Busiest Intersection in Bossier City - 55,000 Plus Cars Daily
- 1.7 Miles from Barksdale Air Force Base with Approx. 14,500 Military, Reserve, & Civilian Personnel
- 3.6 Miles from Bossier Parish Community College with 6,300+ Students
- Located Across from Regional Mall, Offers Great Visibility for Retailers
- Quick Access to and from Interstate 20, North Louisiana's East/West Main Corridor
- Great Tenant Mix and Synergy

TENANTS INCLUDE:

- Aaron's Rentals
- Harbor Freight
- 2nd & Charles
- Office Depot
- Kid to Kid
- 4-Wheel Parts
- Johnson's Furniture
- Notini's
- Arby's
- Dillas
- Smoothie King
- Pizza Hut
- Fantastic Sams
- Speedy Cash
- Bass Fine Jewelry
- Polish Me Pretty



Bossier Corners owned
by affiliate of Anenberg
Asset Management.

2027 DEMOGRAPHIC PROJECTIONS

Radius	Population	Avg Household Income	Number of Households
3 mile	39,665	\$48,686	17,050
5 mile	97,007	\$59,845	41,663
10 mile	243,167	\$63,631	100,859

Source: U.S. Census Bureau. Esri forecasts for 2022 and 2027.

VIDEO TOURS AVAILABLE:

THEATRE BUILDING: <https://youtu.be/d-Qh4IKFDjc>

THEATRE LOBBY: <https://my.matterport.com/show/?m=MphNqLZn2bM>

INDIVIDUAL THEATRE: <https://my.matterport.com/show/?m=sza2FEBkjAK>

For more information, contact:

Brad Armstrong, Associate Broker | 318.222.2244 | barmstrong@vintagerealty.com

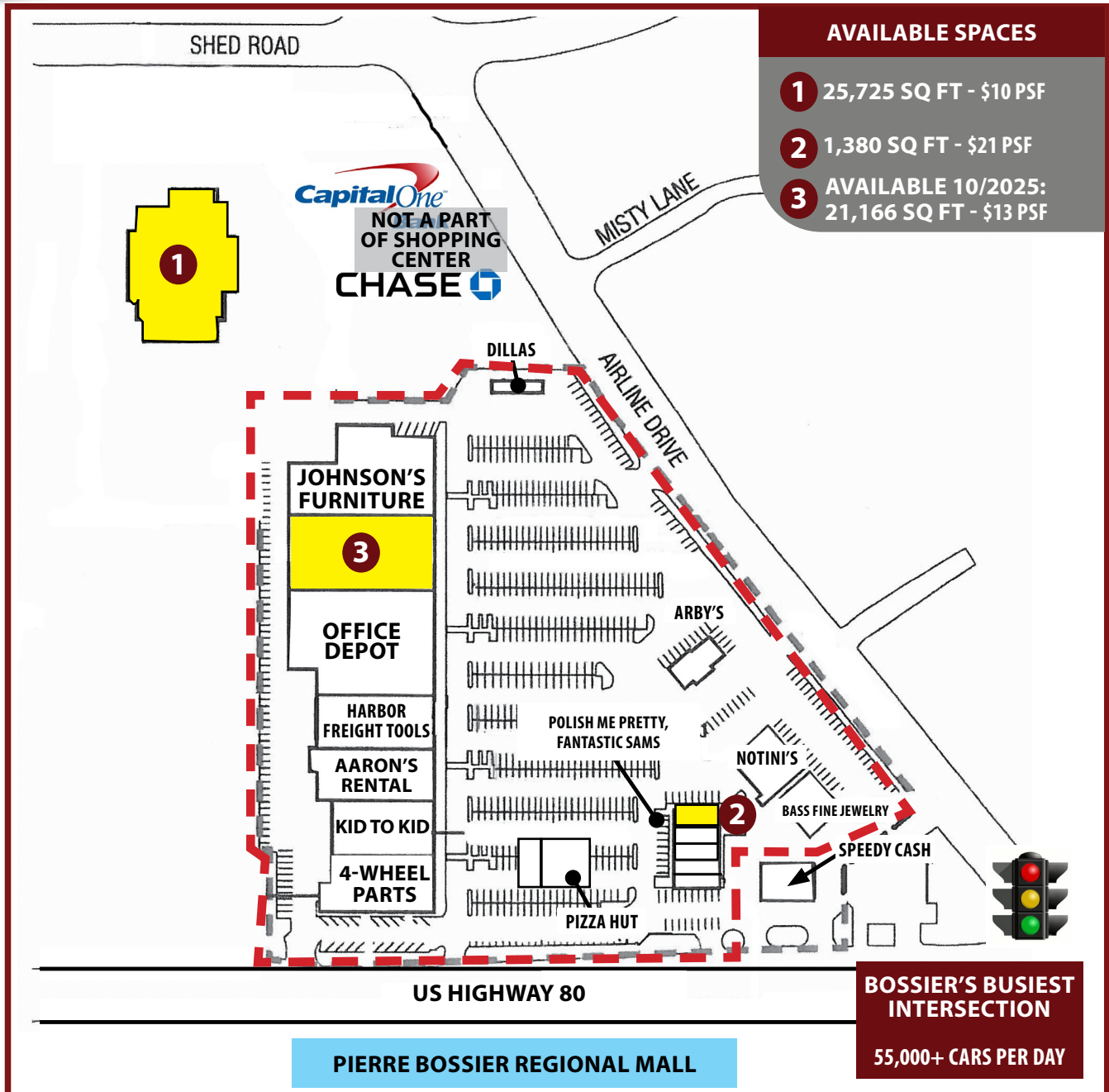
Hilary Bransford | 318.222.2244 | hbransford@vintagerealty.com

ALL INFORMATION CONTAINED HEREIN IS BELIEVED TO BE ACCURATE, BUT IS NOT WARRANTED AND NO LIABILITY OF ERRORS OR OMISSIONS IS ASSURED BY EITHER THE PROPERTY OWNER OR VINTAGE REALTY COMPANY OR ITS AGENTS AND EMPLOYEES. PRICES AS STATED HEREIN AND PRODUCT AVAILABILITY IS SUBJECT TO CHANGE AND/OR SALE OR LEASE WITHOUT PRIOR NOTICE, AND ALL SIZES AND DIMENSIONS ARE SUBJECT TO CORRECTION. REV 3/2025



BOSSIER CORNERS SHOPPING CENTER FOR LEASE

2001 AIRLINE DR.,
BOSSIER CITY, LA 71111



For more information, contact:

Brad Armstrong, Associate Broker | barmstrong@vintagerealty.com

Hilary Bransford | hbransford@vintagerealty.com

318-222-2244 | vintagerealty.com

All Information Contained Herein Is Believed To Be Accurate, But Is Not Warranted And No Liability Of Errors Or Omissions Is Assured By Either The Property Owner Or Vintage Realty Company Or Its Agents And Employees. Prices As Stated Herein And Product Availability Is Subject To Change And/OR Sale Or Lease Without Prior Notice, And All Sizes And Dimensions Are Subject To Correction. 3/2025



Bossier Corners owned by affiliate
of Anenberg Asset Management.

BOSSIER CORNERS SHOPPING CENTER FOR LEASE

2001 AIRLINE DR.,
BOSSIER CITY, LA 71111



For more information, contact:

Brad Armstrong, Associate Broker | barmstrong@vintagerealty.com

Hilary Bransford | hbransford@vintagerealty.com

318-222-2244 | vintagerealty.com

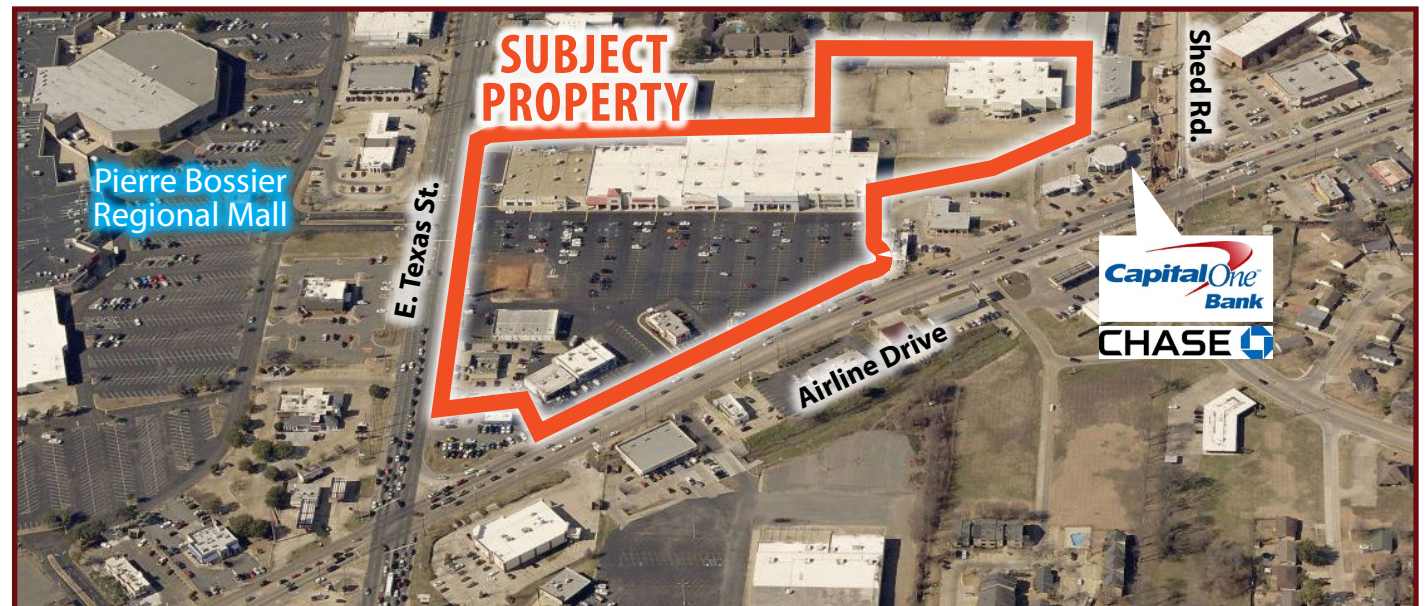
All Information Contained Herein Is Believed To Be Accurate, But Is Not Warranted And No Liability Of Errors Or Omissions Is Assured By Either The Property Owner Or Vintage Realty Company Or Its Agents And Employees. Prices As Stated Herein And Product Availability Is Subject To Change And/Or Sale Or Lease Without Prior Notice, And All Sizes And Dimensions Are Subject To Correction. 3/2025



Bossier Corners owned by affiliate
of Anenberg Asset Management.

BOSSIER CORNERS SHOPPING CENTER FOR LEASE

2001 AIRLINE DR.,
BOSSIER CITY, LA 71111



For more information, contact:

Brad Armstrong, Associate Broker | barmstrong@vintagerealty.com

Hilary Bransford | hbransford@vintagerealty.com

318-222-2244 | vintagerealty.com

All Information Contained Herein Is Believed To Be Accurate, But Is Not Warranted And No Liability Of Errors Or Omissions Is Assured By Either The Property Owner Or Vintage Realty Company Or Its Agents And Employees. Prices As Stated Herein And Product Availability Is Subject To Change And/OR Sale Or Lease Without Prior Notice, And All Sizes And Dimensions Are Subject To Correction. 3/2025



Bossier Corners owned by affiliate
of Anenberg Asset Management.