



Brookview Executive Suites

105 – 630 USF

1524 BROOKHOLLOW DR

SANTA ANA, CA 92705

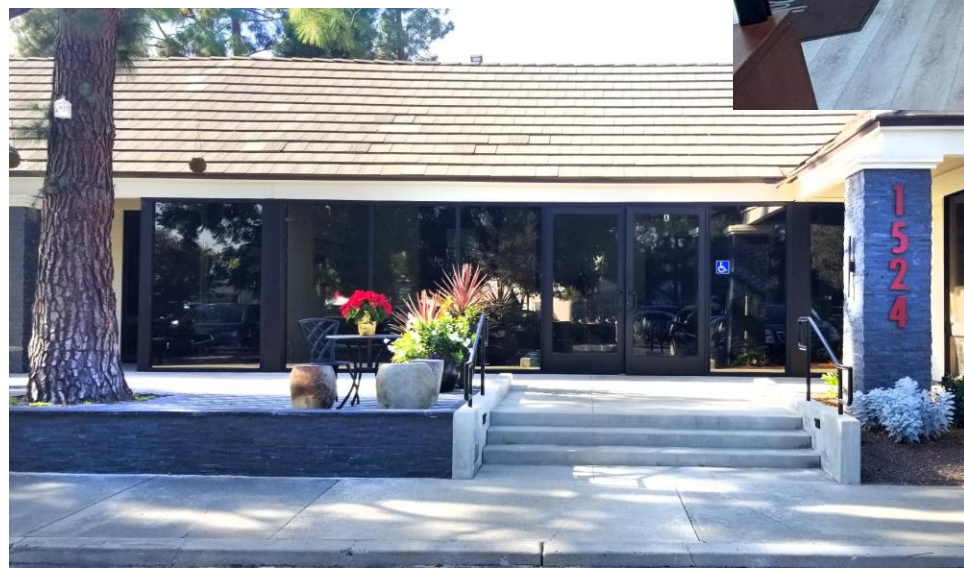
TINA ESKANDARIAN - SHIRIN ZARKESH

714.587.2870 / 714.662.2283

Tina@AyZarInc.com / Shirin@AyZarInc.com



- Premium central OC location
- Immediate access:
55, 5, 405, 22, 73 freeways
- Plentiful Parking
- Sprinklered Building
- 9'+ Ceilings
- Utilities & basic WFI included
- Fully Renovated



PROMINENT ENTRY

HIGH IMAGE LOBBY





POND SYSTEM

- Ground Floor
- 2nd Floor with Views
- 24-7 Access
- Located at main Brookhollow pond in natural scenic area



COMMON AREA

UNLIMITED USE OF CONFERENCE ROOM



NEWLY BUILT RESTROOMS

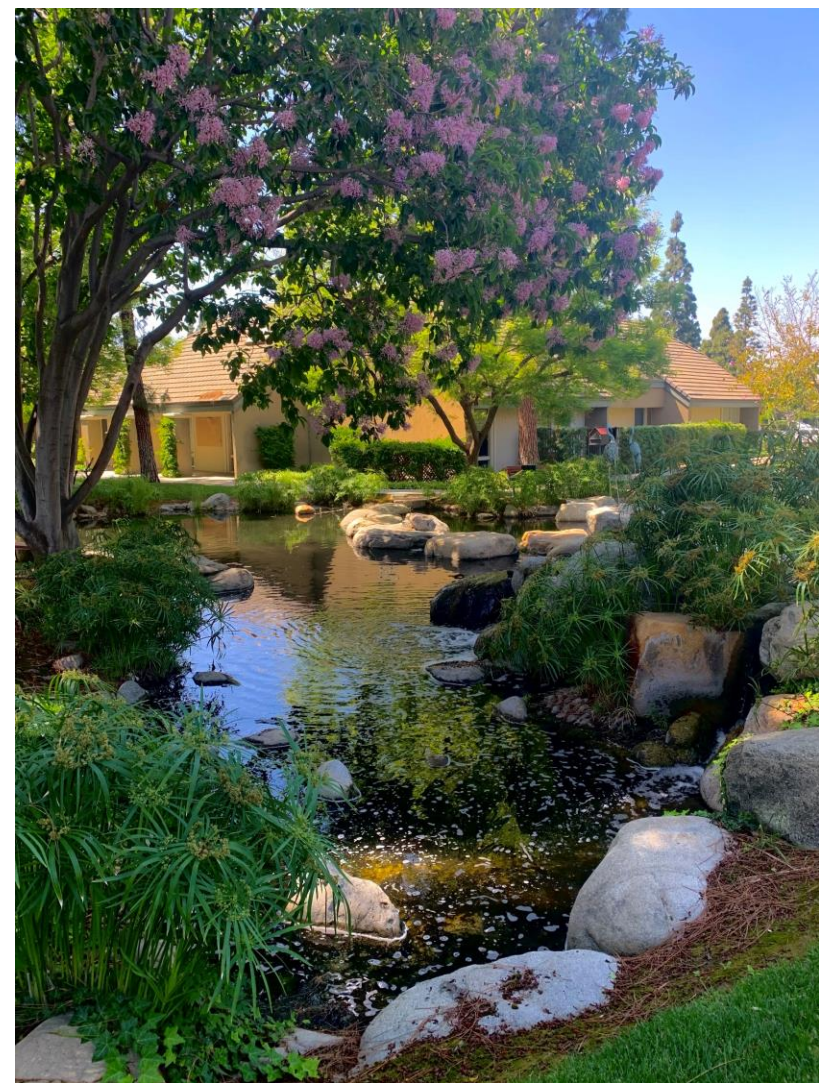


SECURE MAILBOX
FOR YOUR SUITE



UPGRADED BREAK AREA





MORE THAN AN OASIS to migratory birds on seasonal flights, Brookhollow is also habitat to varied fauna in a meticulously maintained landscape.

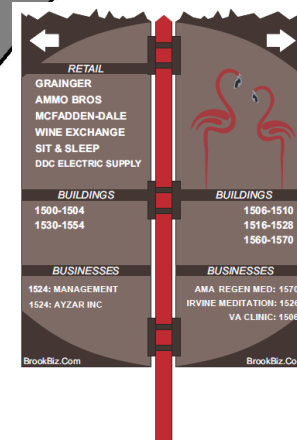
A sanctuary of tall trees, cool shade and bubbling brooks all nestled amid the busy rush of city life.

Meditate on a favorite kōan at Zen Garden, play checkers with multicolored stones, or chill with a relaxing stroll around the pond.

WARNER AVENUE



B2 & B3 Signs
Warner Ave & Grande Ave Signage



N Signs
Brookhollow Drive Signage

Signage Opportunity

- Freeway
- Main Avenues
- Directionals
- Building Top

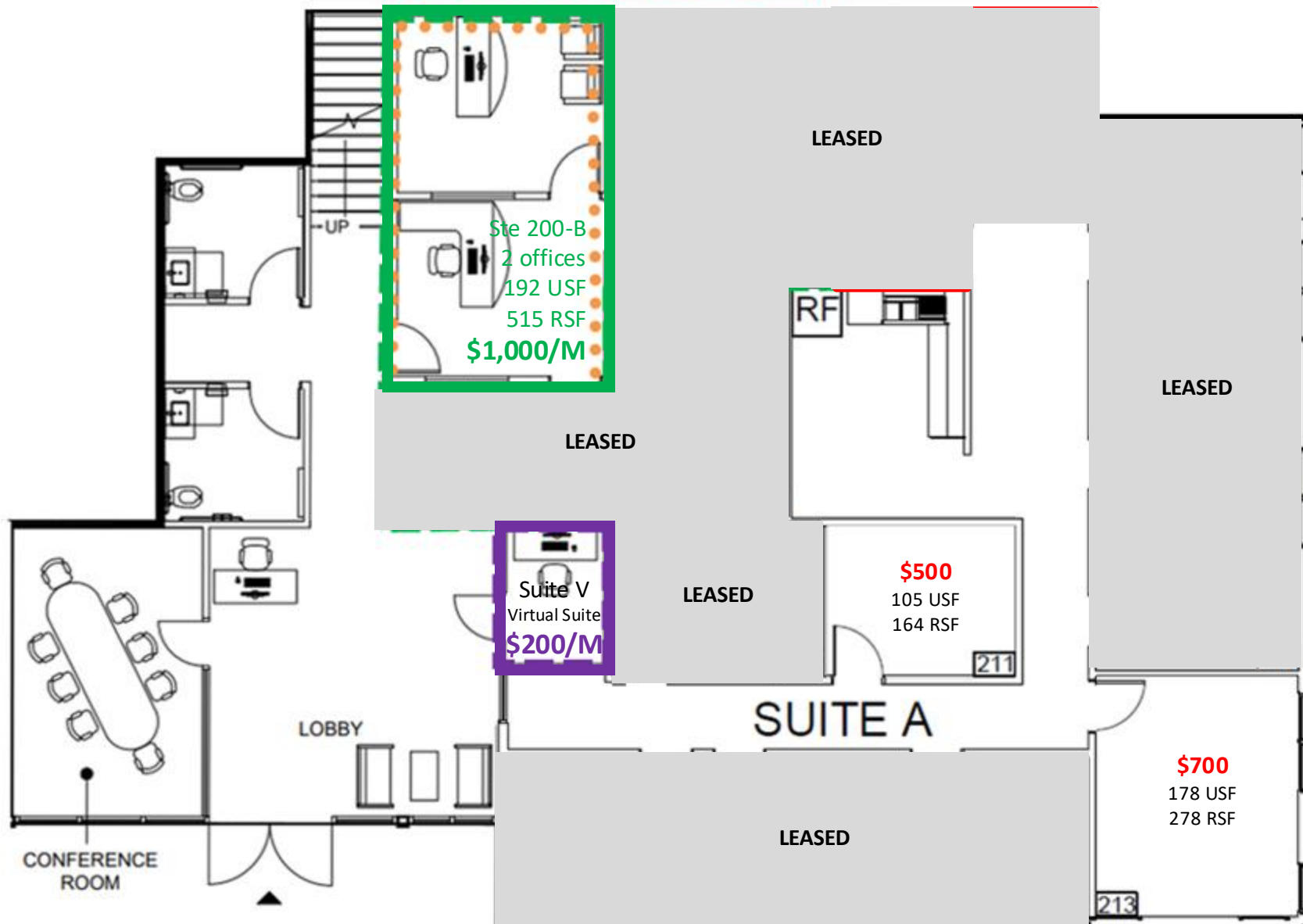


A1 Sign
Freeway Signage

AVAILABLE SUITES

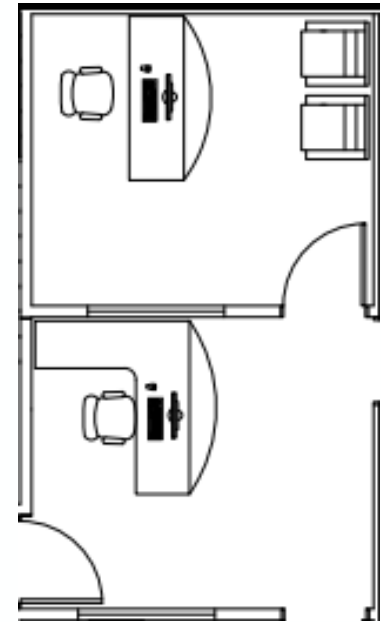
Ste	Floor	USF	RSF	\$/M	Specifics
200-B	1 st	192	515	\$1,000	2-office suite
213	1 st	178	278	\$700	corner suite with Full height glass panels
211	1 st	105	164	\$500	interior suite
210	2 nd	85	130	\$350	exclusive workstation
240	2 nd	85	130	\$350	exclusive workstation
300	2 nd	143	237	\$950	pond view office
310	2 nd	145	241	\$950	pond view office
310J	2 nd	134	222	\$550	can be joined with 310
320	2 nd	144	239	\$950	pond view office
320J	2 nd	132	219	\$550	can be joined with 320
400	1 st	268	400	\$450	by the pond ideal for Coffee Cart business
Virtual	Either			\$250	non-exclusive workstation

GROUND FLOOR SUITES FURNISHED READY TO MOVE



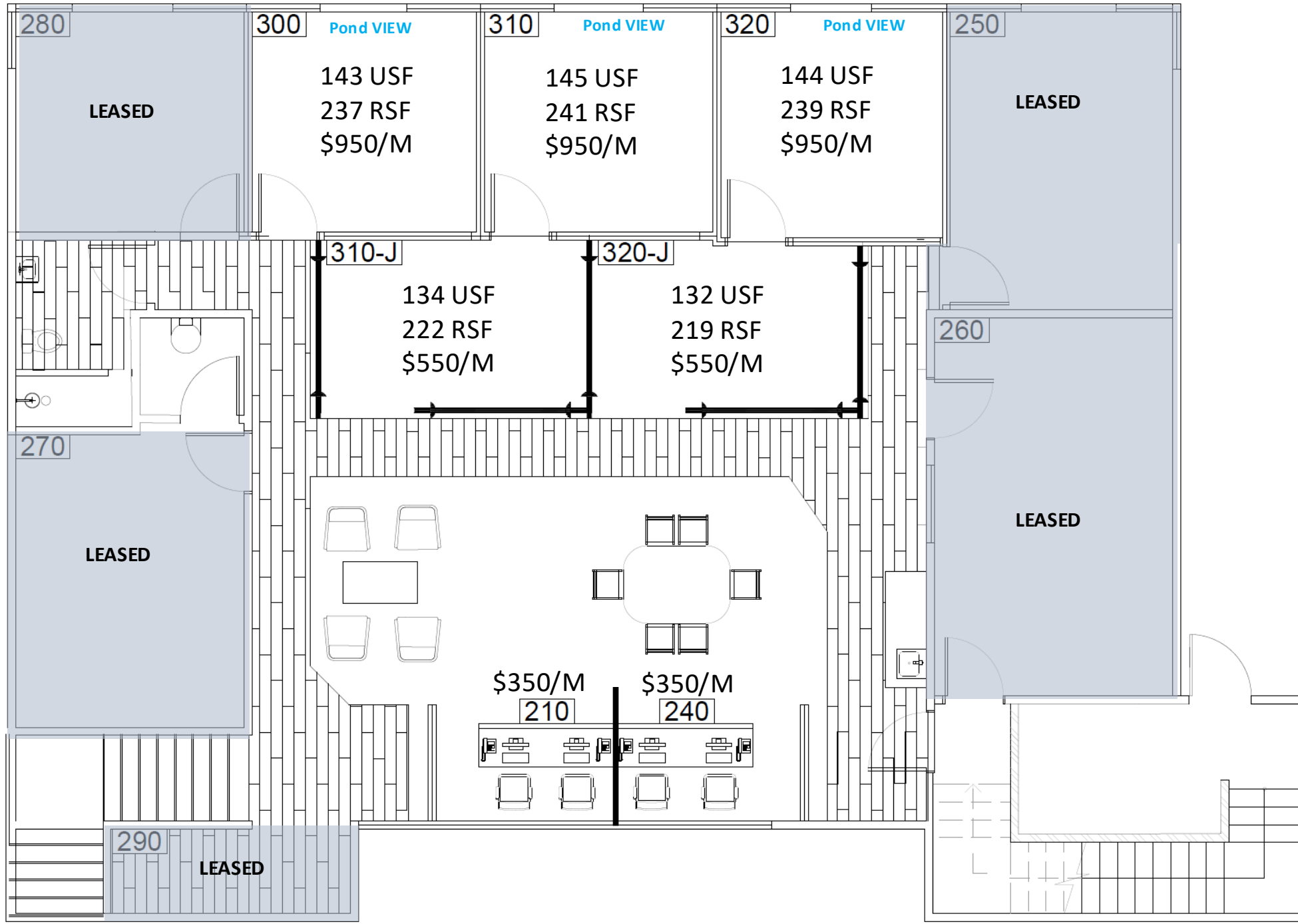


SUITE 200B



UPPER FLOOR SUITES WITH VIEW OF THE POND

FURNISHED AND READY TO MOVE



UPSTAIRS SUITES – PRIVATE & SHARED SPACES



VIRTUAL SUITE "V" WITH ADDITIONAL AMENITIES

- BUSINESS POSTAL ADDRESS/MAIL BOX
- UNLIMITED USE OF NON-EXCLUSIVE WORKSTATION (SUBJECT TO AVAILABILITY)
- UNLIMITED USE OF CONFERENCE ROOM (SUBJECT TO AVAILABILITY)
- BASIC WIFI
- 24/7 ACCESS



GROUND FLOOR SUITE BY THE POND



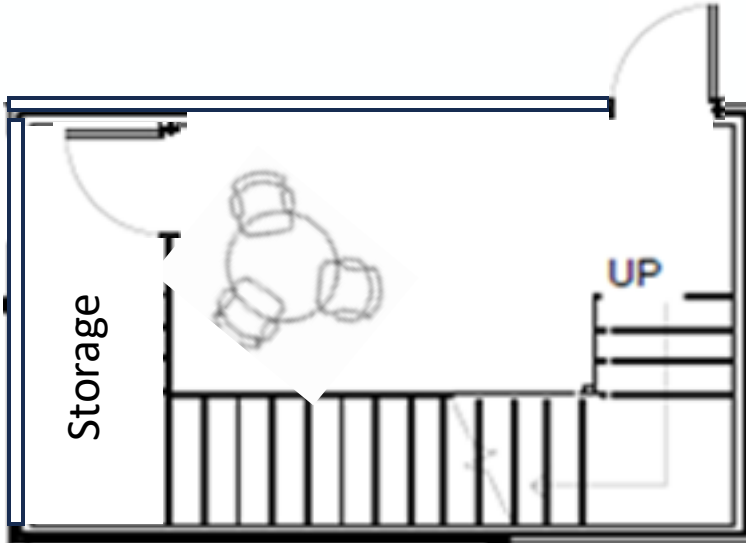
SUITE 400

Coffee Cart

- 268 USF
- 400 RSF

SUITE 400

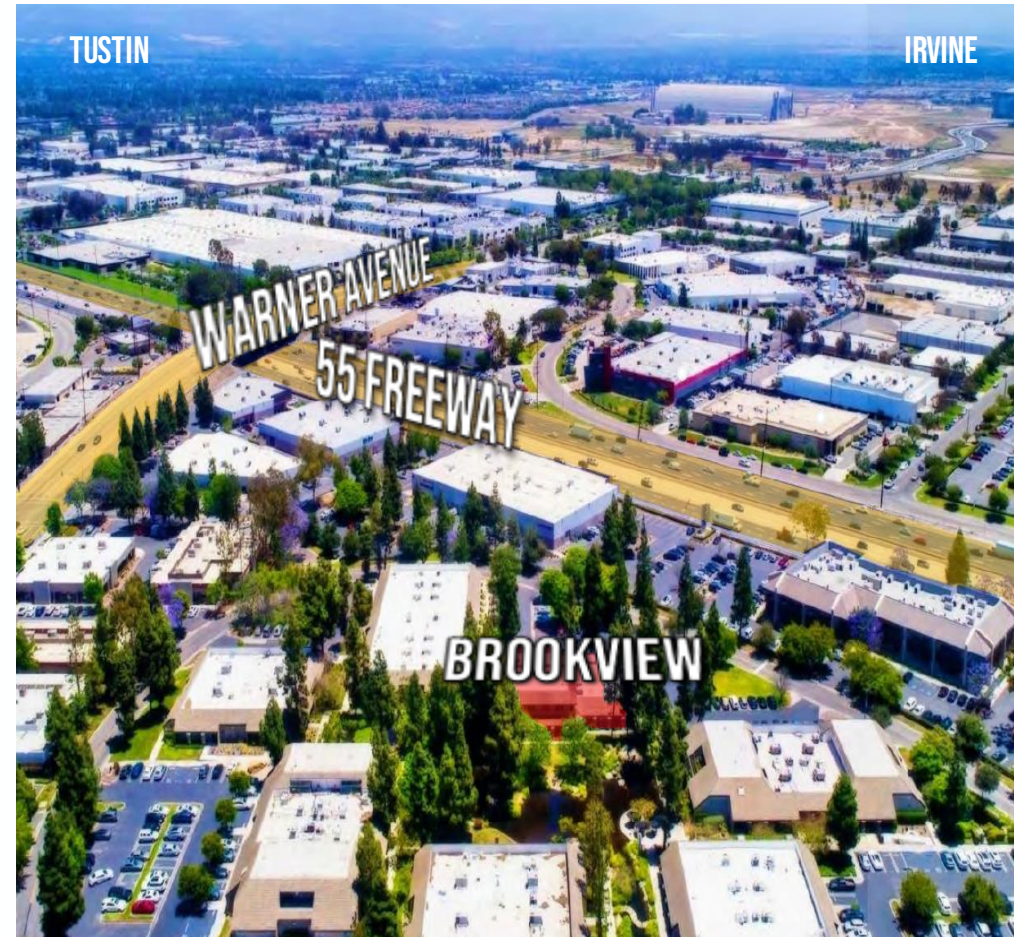
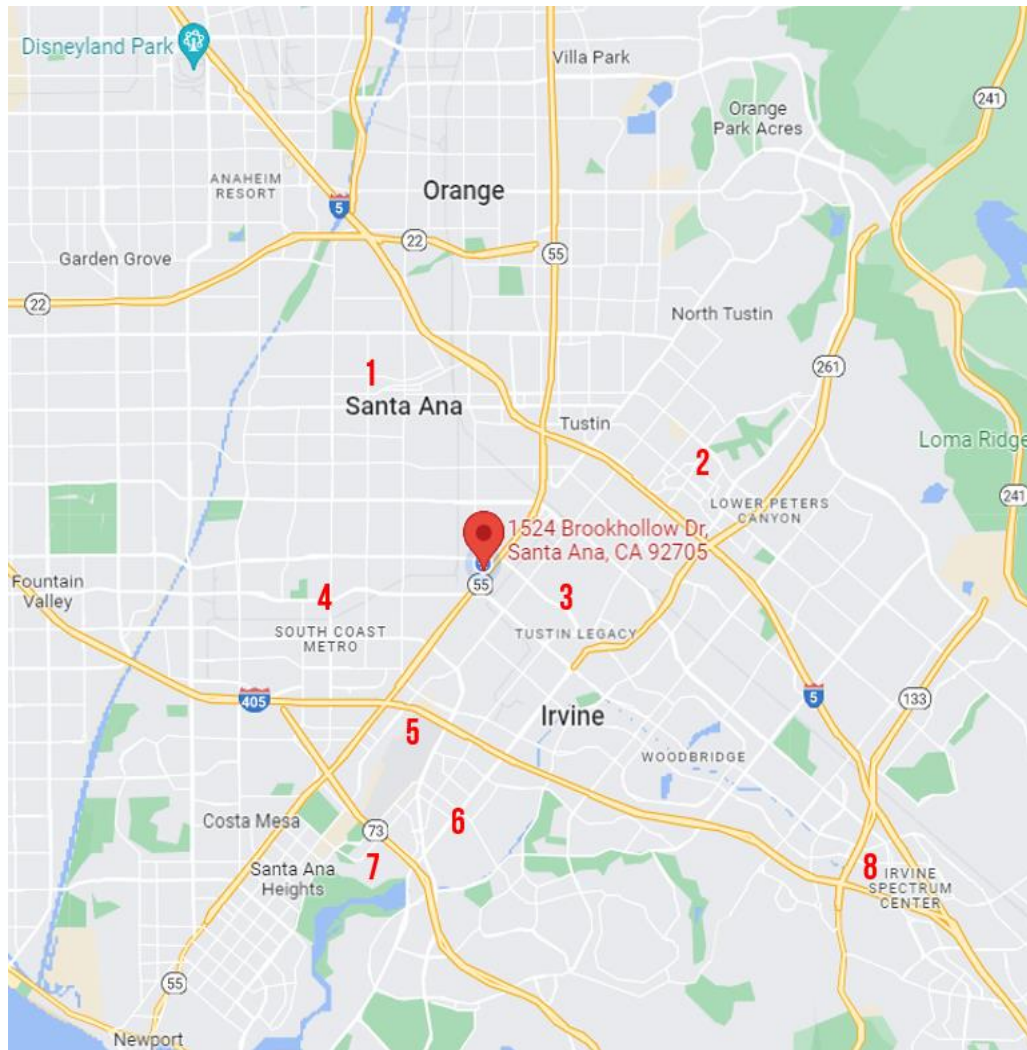
IDEAL FOR COFFEE CART BUSINESS



[CLICK HERE FOR A VIDEO!](#)

LOCATIONS OF INTEREST

1. CITY, COUNTY, STATE, FEDERAL GOV & COURTS
2. IRVINE/TUSTIN MARKETPLACE
3. TUSTIN DISTRICT & LEGACY
4. SOUTH COAST PLAZA
5. JOHN WAYNE AIRPORT
6. HARBOR JUSTICE CENTER
7. UNIVERSITY OF CALIFORNIA, IRVINE
8. IRVINE SPECTRUM



AYZAR

TINA ESKANDARIAN

DRE #02248071

714.587.2870

TINA@AYZARINC.COM