



# 901 New Hampshire Street

Lawrence, Kansas

Sublease > Suite 200

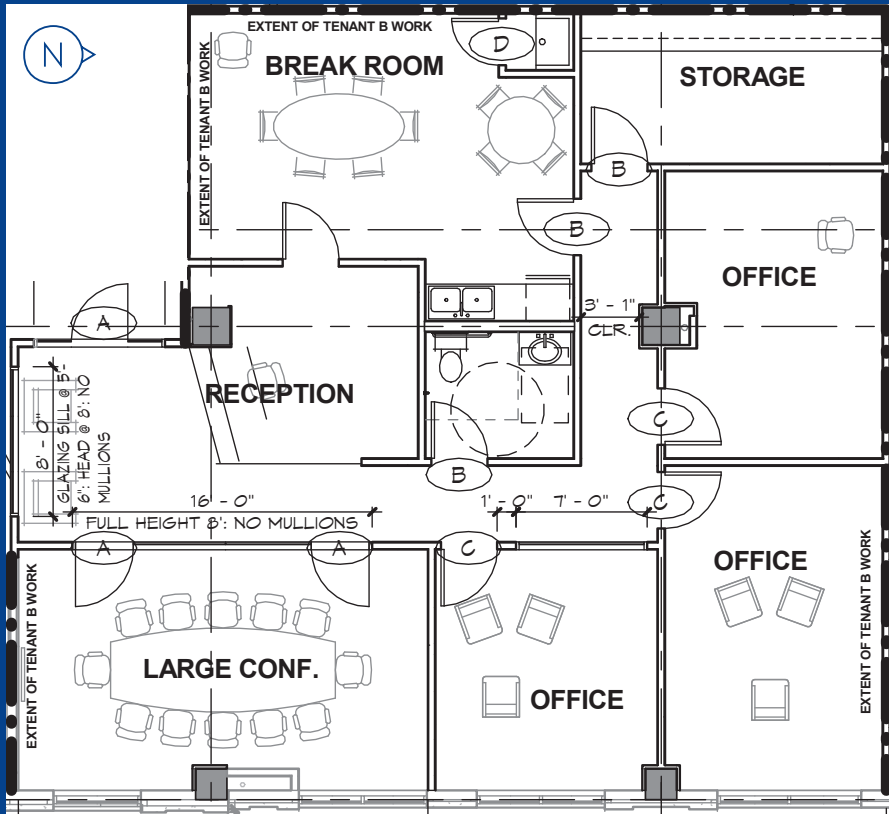
\$4,000 per month  
1,762 SF

### Prime Corner Location

- Building is anchored by 55 apartments and professional office users on the second floor
- Suite includes three offices, break room, in-suite restroom, reception area, and storage area
- 500+ stall city parking garage located immediately to the south
- Year built: 2011
- Zoning: CD
- \$4,000 per month, gross, plus pro rata utilities
- Sublease through December 31, 2025



# Property Profile





# Property Photos







# Contact



**Allison Vance Moore, SIOR**

Senior Vice President | Lawrence

+1 785 865 3924

[allison.moore@colliers.com](mailto:allison.moore@colliers.com)



Colliers Lawrence  
3705 Clinton Parkway, Suite 201  
Lawrence, Kansas 66047  
[colliers.com/lawrence](http://colliers.com/lawrence)  
+1 785 865 5100

This document/email has been prepared by Colliers for advertising and general information only. Colliers makes no guarantees, representations or warranties of any kind, expressed or implied, regarding the information including, but not limited to, warranties of content, accuracy and reliability. Any interested party should undertake their own inquiries as to the accuracy of the information. Colliers excludes unequivocally all inferred or implied terms, conditions and warranties arising out of this document and excludes all liability for loss and damages arising there from. This publication is the copyrighted property of Colliers and /or its licensor(s). © 2024. All rights reserved. This communication is not intended to cause or induce breach of an existing listing agreement.