

SPACE PROFILE

360
SUITE

1,714
SQUARE FEET

THRU 11/30/25
TERM

NEGOTIABLE
RENTAL RATE

3.00/1,000 SF
PARKING RATIO

A
CLASS

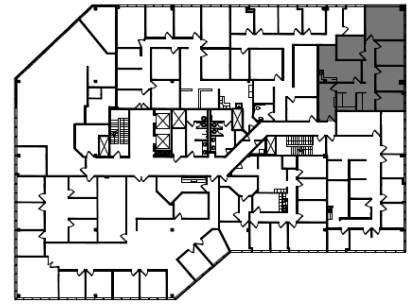
For **sublease**

ENCINO CROSSING III OFFICE

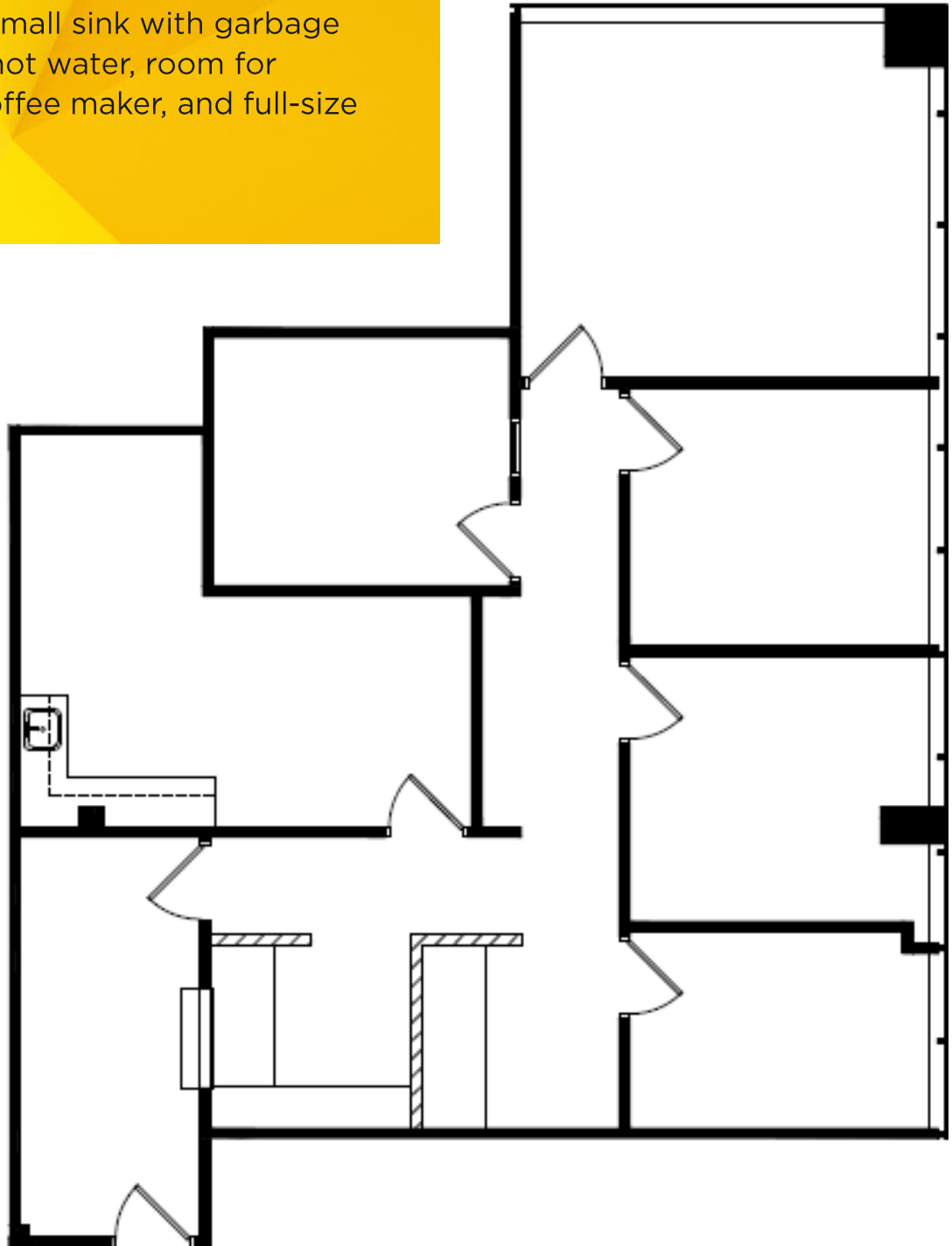
6345 Balboa Blvd, Building 3
Encino, California 91316

Key Features

- Two (2) Workstations
- Four (4) Private Offices
- One (1) Conference Room holds 4-8 (depending on size of additional furniture)
- Kitchenette (small sink with garbage disposal and hot water, room for microwave, coffee maker, and full-size refrigerator)



FLOOR LOCATION PLAN



Taylor Wood

Vice Chairman
949 706 6924
twood@savills.us

Drew DeMarco

Assistant Director
949 706 6947
ademarco@savills.us



Taylor Wood

949 706 6924
twood@savills.us
Lic 01868409

Drew DeMarco

949 706 6947
ademarco@savills.us
Lic 02095000



The information contained in this communication has been obtained from a variety of sources believed to be reliable but has not been verified. NO WARRANTY OR REPRESENTATION, EXPRESS OR IMPLIED, IS MADE AS TO THE CONDITION OF THE PROPERTY OR ACCURACY OR COMPLETENESS OF THE INFORMATION CONTAINED HEREIN AND SAME IS SUBMITTED SUBJECT TO ERRORS, OMISSIONS, CHANGE OF PRICE, RENTAL OR OTHER CONDITIONS, WITHDRAWAL WITHOUT NOTICE AND TO ANY SPECIFIC CONDITIONS IMPOSED BY THE PROPERTY OWNER OR LESSOR.