



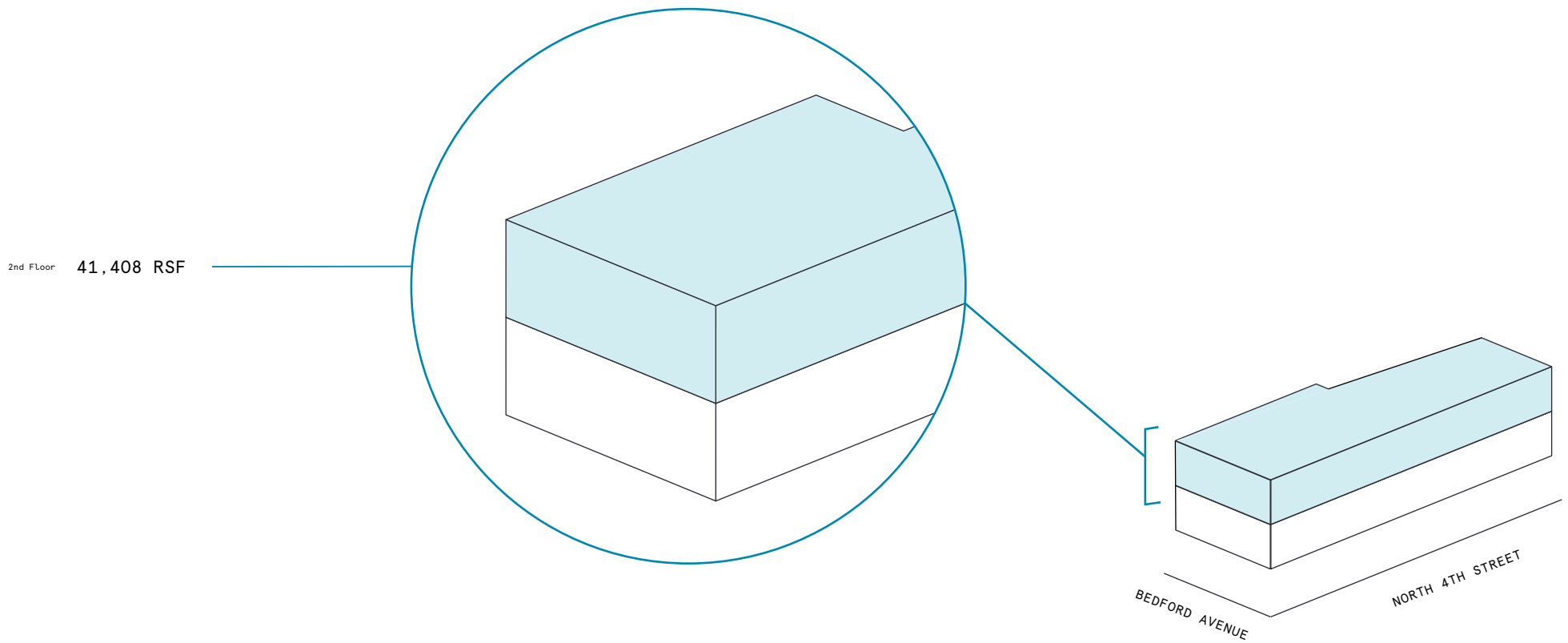
134 North 4th Street



Space availability summary

WeWork @ 134 North 4th Street
Brooklyn, NY

wework



41,408 RSF

TOTAL WEWORK RSF

134 North 4th Street

At a glance

Workspaces designed for productivity and creativity with flexible size & term

Dedicated, private suites available from 84 to 4,834 RSF

Move-in ready suites - furnished & wired

02

TOTAL BUILDING FLOORS

150,000

TOTAL BUILDING SQ FT

All dimensions are approximate and subject to variances. It is your obligation to independently verify the particulars of the property. WeWork reserves the right to make changes.



Abundant natural lighting, nature-inspired wallpaper, and cozy leather seating gives this meeting space an undeniably welcoming feel.



Floor-to-ceiling windows provide plenty of light and quintessential Brooklyn views.

Modern, light-filled workspace in the heart of Williamsburg

Built in 2016, this two-story building has its entire top floor devoted to high-end office spaces flooded with natural light. 134 North 4th Street sits just above vibrant Bedford Avenue, with access to the finest restaurants, art, and music venues, and fashion boutiques in trendy Williamsburg—not to mention an up-and-coming startup scene that's ideal for young urban professionals. WeWork's space features a mix of sleek private offices, sun-soaked lounges, and modern meeting spaces sure to inspire creativity, productivity, and collaboration.



An outdoor terrace with colorful accents and plenty of plant life provides views of the surrounding cityscape.



Spacious common areas feature golden herringbone flooring, brick columns, and sleek pendant lighting.

The epitome of elevated industrial design

With layered graphics, pops of bright color, and bold patterns, 134 North 4th Street draws from the vibrant creativity of Williamsburg itself. Hardwood oak flooring, bright natural light, and furnishings in sleek silhouettes lend themselves to this space's urban-minded refinement.

- The space contains industrial details softened with rich leather couches, golden woods, and a warm color palette
- Each meeting space features custom wallpaper, patterned tile carpeting, and colored accent walls
- A stunning outdoor terrace offers beautiful views of Williamsburg



Custom patterned wallpaper and selective pops of color add visual interest without overwhelming this polished space.



Fresh-brewed coffee and rotating draft taps provide members need during and after the workday.



A meeting room with sage-green seating and wainscoting provides a warm, intimate environment for team meetings and brainstorming sessions.



Collage-inspired wallpaper adds an eclectic twist to this space's warm wood flooring and rich green walls.



On-site amenities

- Electronic keycard access
- Web-based visitor access
- Business-class printers
- Professional events and programming
- Stocked pantry



- US mail drop
- On-site staff
- Meeting rooms
- Mother's room
- Phone booths
- Outdoor space
- Dog-friendly spaces
- Bicycle storage
- Access to car charging stations
- Supplemental HVAC and electric

Building specifications



Hours of operation

Monday - Friday: 9am-6pm



Ceiling heights

12 feet slab-to-slab



Fire strategy

Fully-sprinklered floors



Building history

Built in 1973



Elevators

2 passenger elevators



Building size

2 stories
150,000 SF



HVAC

Monday - Friday: 8am-8pm

The best and brightest of Brooklyn

134 North 4th Street is surrounded on all sides by a selection of delicious restaurants, cafes, and sweet shops. Check out Starbucks or Bagelsmith for morning breakfast run, or order a healthy and filling lunch from the local Sweetgreen. Members will also find several lovely plazas and parks to stroll around after the work is done, as well as a variety of conveniences, including Duane Reed, Whole Foods, USPS, and Equinox gym. Whatever you need, 134 N 4th Street has you covered.

Distance to WeWork

Bedford Station		Walk	3 min
Citi Bike		Walk	5 min
Metropolitan Station		Walk	10 min



2nd Floor

41,408 RSF

12

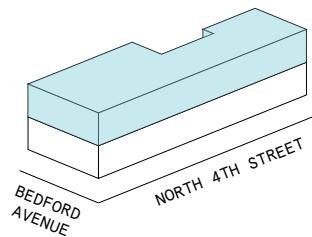
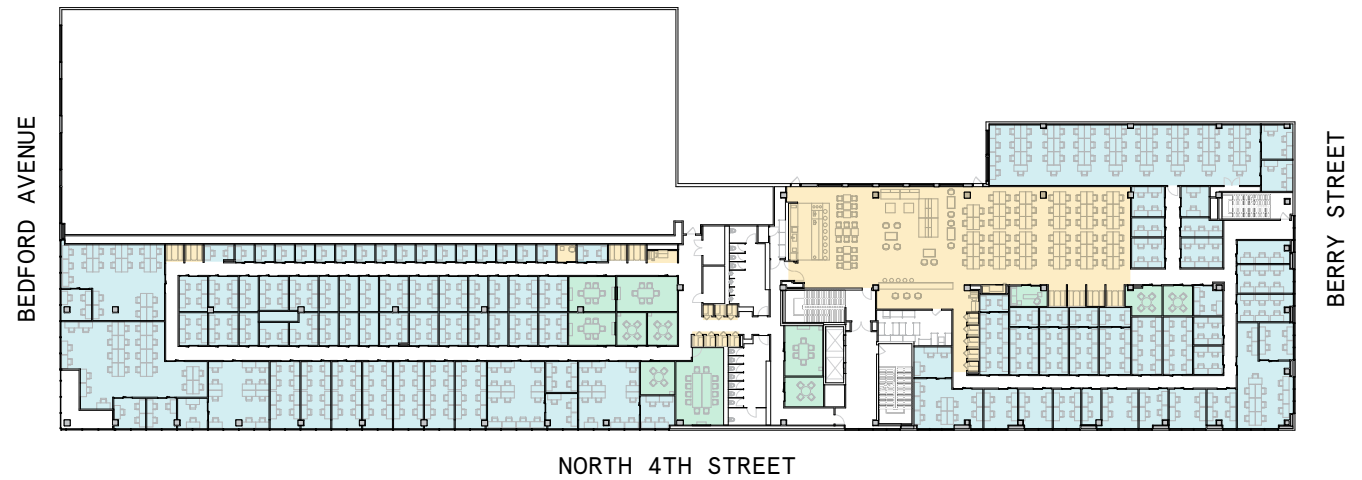
MEETING ROOM(S)

4

SHARED WORKSPACE(S)

LEGEND

- MEETING ROOM
- SHARED WORKSPACE
- DEDICATED SPACE



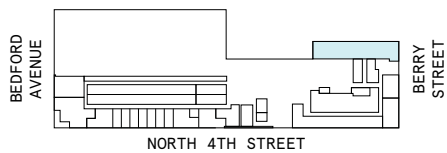
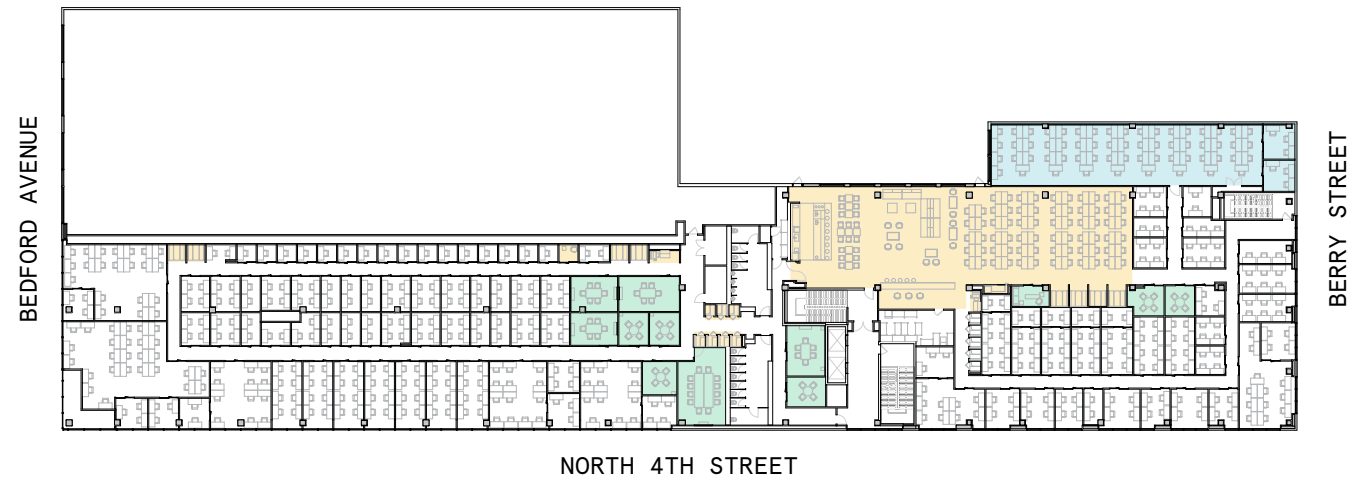
2nd Floor

41,408 RSF

4,834 RSF Suite 2L

2

PRIVATE OFFICE(S)

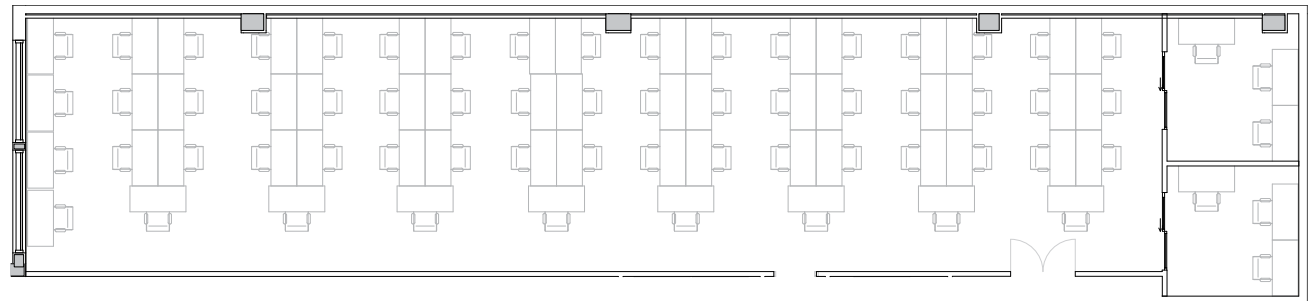


Suite 2L

2nd Floor

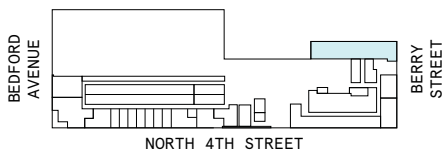
2

PRIVATE OFFICE(S)



4,834 RSF

RENTABLE AREA



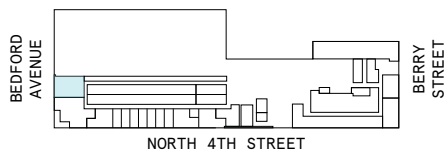
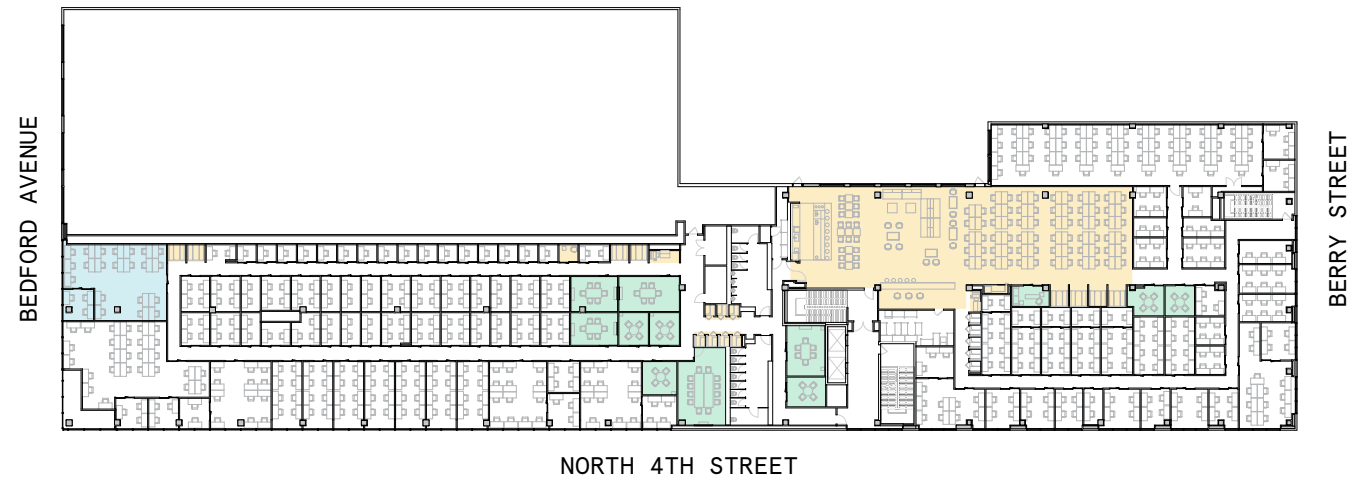
2nd Floor

41,408 RSF

2,039 RSF Suite 2100

1

PRIVATE OFFICE(S)



Suite 2100

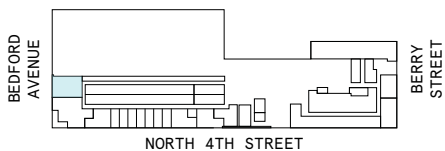
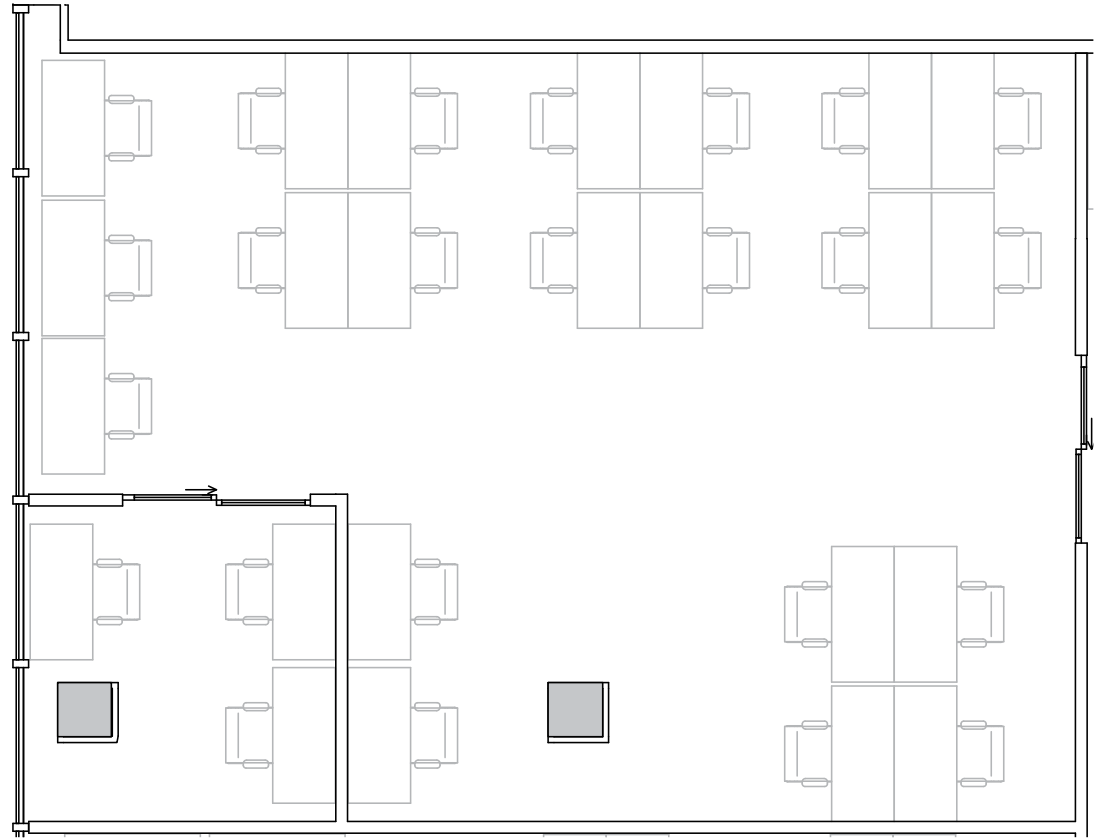
2nd Floor

1

PRIVATE OFFICE(S)

2,039 RSF

RENTABLE AREA



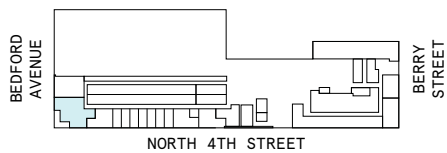
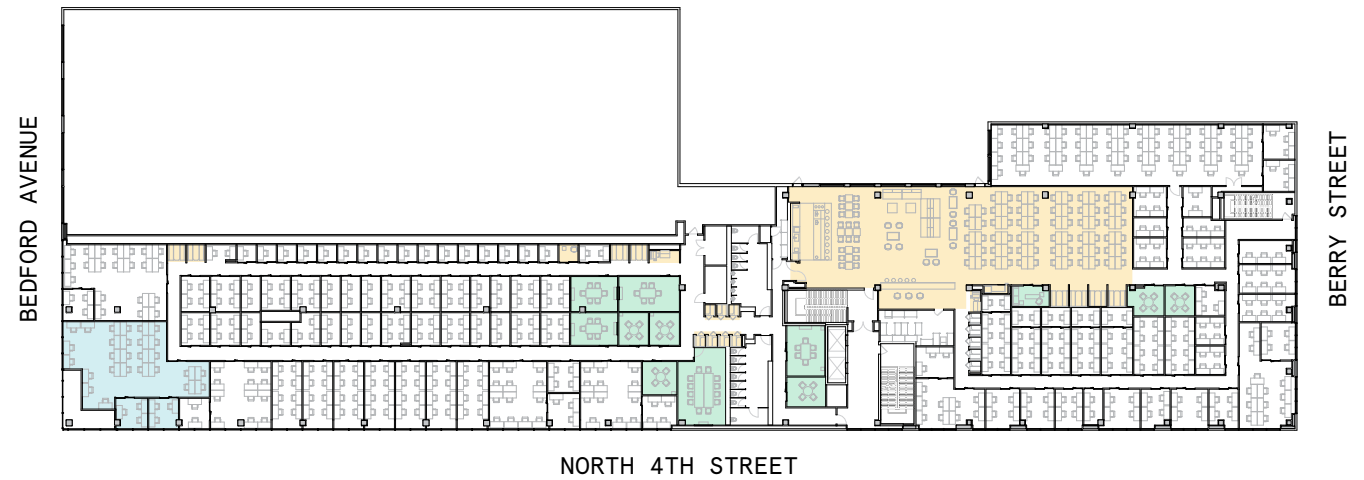
2nd Floor

41,408 RSF

2,912 RSF Suite 2137

2

PRIVATE OFFICE(S)



Suite 2137

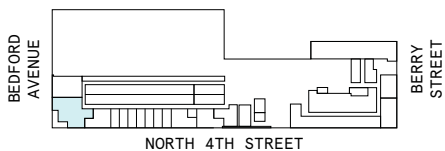
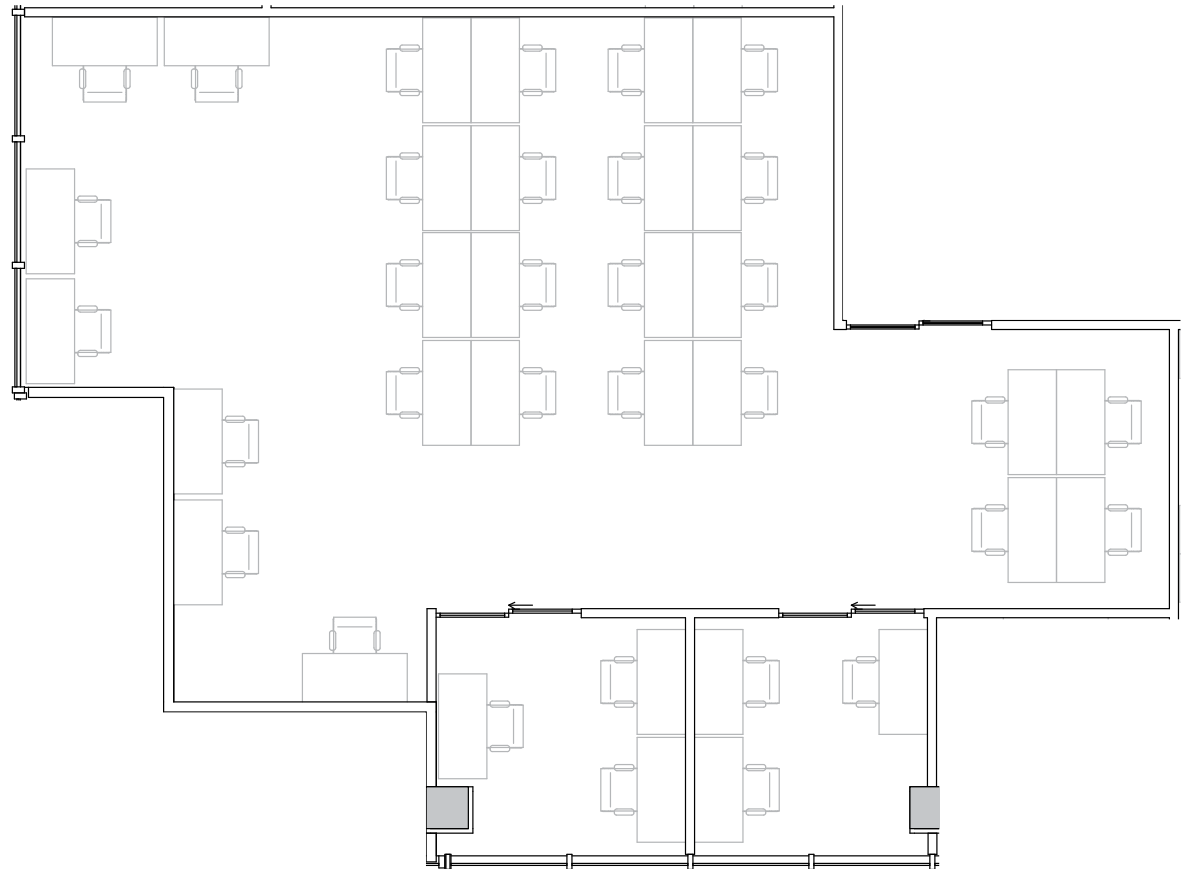
2nd Floor

2

PRIVATE OFFICE(S)

2,912 RSF

RENTABLE AREA



Contact

For leasing inquiries please
reach out to our team.



Emily Roman

PORTFOLIO DIRECTOR
EMILY.ROMAN2@WEWORK.COM
213.709.9264

Brooke Weinstein

LEASING DIRECTOR
BROOKE.WEINSTEIN@WEWORK.COM
610.608.7512

© 2022 WeWork. The WeWork trademark and related logos are the property of WeWork Companies LLC. Any reference to third-party names are for reference and informational purposes only and should not be considered an endorsement or association of WeWork or vice versa. Photographs contained herein may be representative examples of various WeWork locations and do not necessarily depict the WeWork location referenced. While reasonable efforts have been made to check the accuracy of the information contained here, WeWork, its officers, employees, directors, and representatives, make no warranty, express or implied, regarding the accuracy of the information and disclaim any liability arising from the use of the information contained herein. All dimensions are approximate and subject to variances. It is your obligation to independently verify the particulars of the property. WeWork reserves the right to make changes.