

# PRIME RETAIL/OFFICE SPACE

8028 NE Glisan St, Portland, OR

# For Lease



## Listed at: \$18/sf/yr

Ideally situated on NE Glisan near the high-traffic 82nd Avenue corridor, 8028 NE Glisan offers two versatile flex-space opportunities perfect for retail, service, or light industrial use.

- **Unit A (2,000 SF):** Versatile flex space featuring one bay door, main-level office, and a large office/break room upstairs.
- **Unit C (2,366sf):** Specialized shop of 1326sf with one bay door, lower office, with office, small conference room, storage & loft upstairs. Currently utilized as a cabinet shop; owner is open to selling equipment to interested tenants.
- **Dedicated Parking:** Two exclusive parking spots included in the lot for each space.
- **High Visibility:** Prime location on Glisan near 82nd Ave with monument signage space available.
- **Strategic Zoning:** Zoned CS (Storefront Commercial), ideal for retail, service, or light industrial businesses.



## JORIE GIROD

PRINCIPAL BROKER, COMMERCIAL DIVISION

503-737-8038

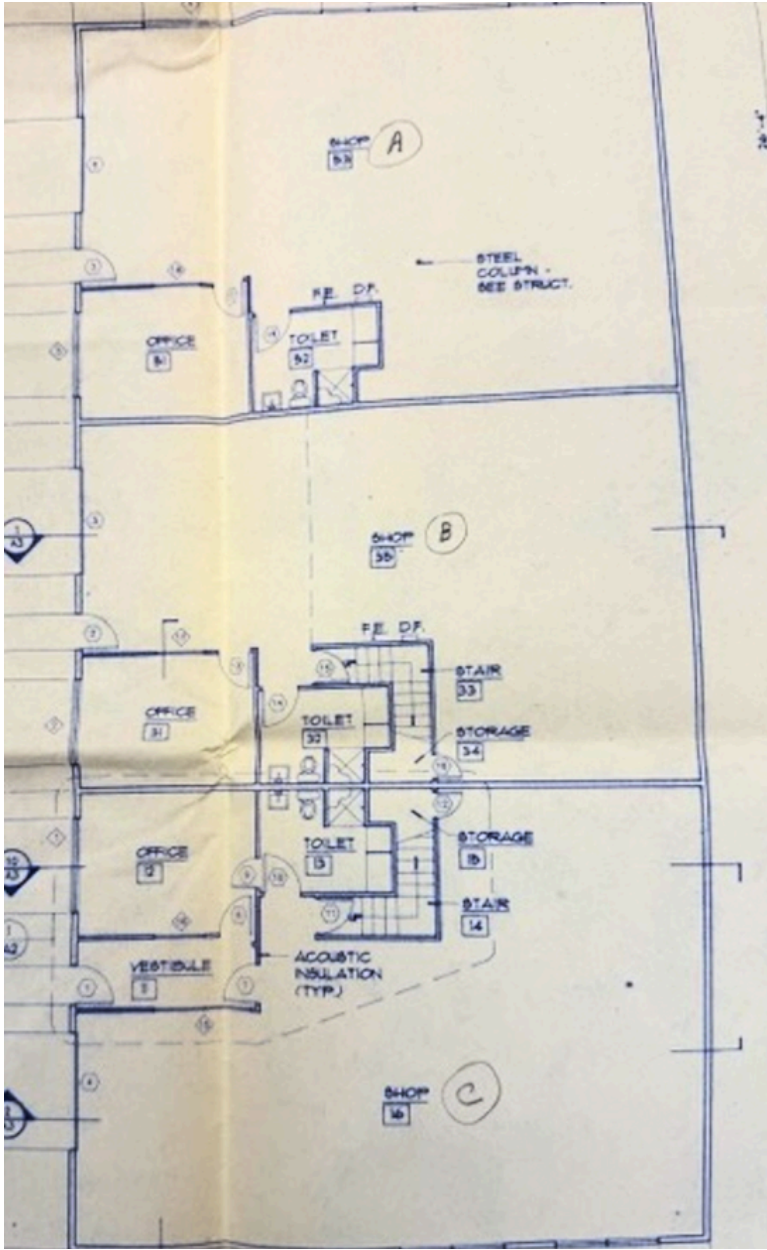
joriegirodrealtor@gmail.com

OR Lic# 200402438



COLDWELL BANKER  
**COMMERCIAL**  
PROFESSIONAL GROUP

# 1<sup>ST</sup> FLOOR SPACE PLAN



# 2<sup>ND</sup> FLOOR SPACE PLAN

