

# Insulated Warehouse Space | For Lease

11842-C S 33rd W Ave | Sapulpa, OK 74107

**WIGGIN**  
PROPERTIES, LLC



## Available Space

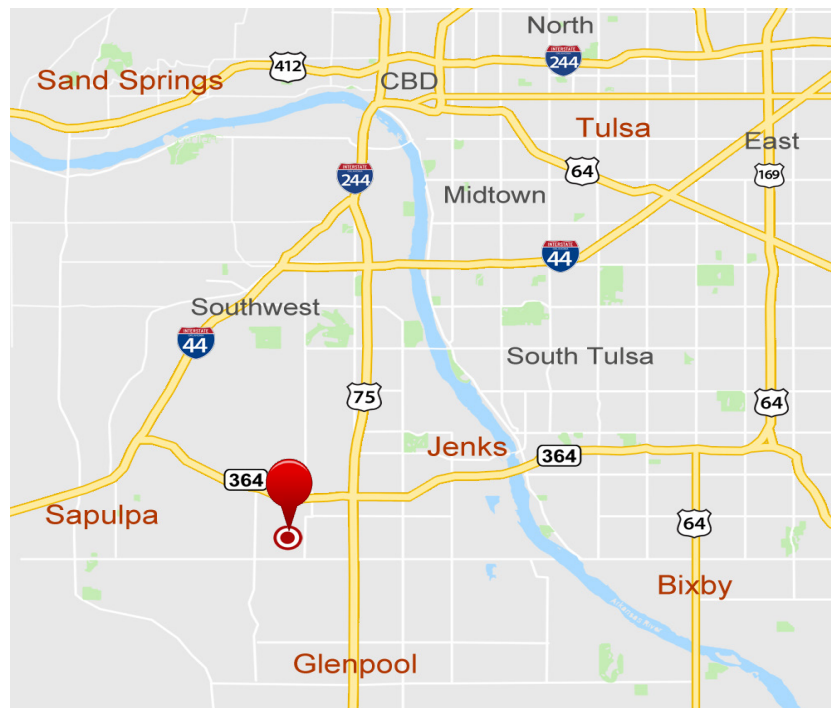
**±5,000 SF**

±1,406 SF Office

±1,406 SF Mezzanine Store (not included in SF)

## Property Features

- (1) 10' x 12' Drive-In Doors
- Shop Heater
- Exhaust Fans
- 240 Volt 3-Phase Power
- 16.5' Clear Height
- Partially Fenced; Shared Yard
- Zoned C2
- Ample Parking; Level Topography
- Near Highway 75 and Highway 117



**John Watchous**

Advisor

918.991.8519

[jwatchous@wigginprop.com](mailto:jwatchous@wigginprop.com)

**Shawna Hale, CCIM**

Advisor

918.282.8664

[shale@wigginprop.com](mailto:shale@wigginprop.com)

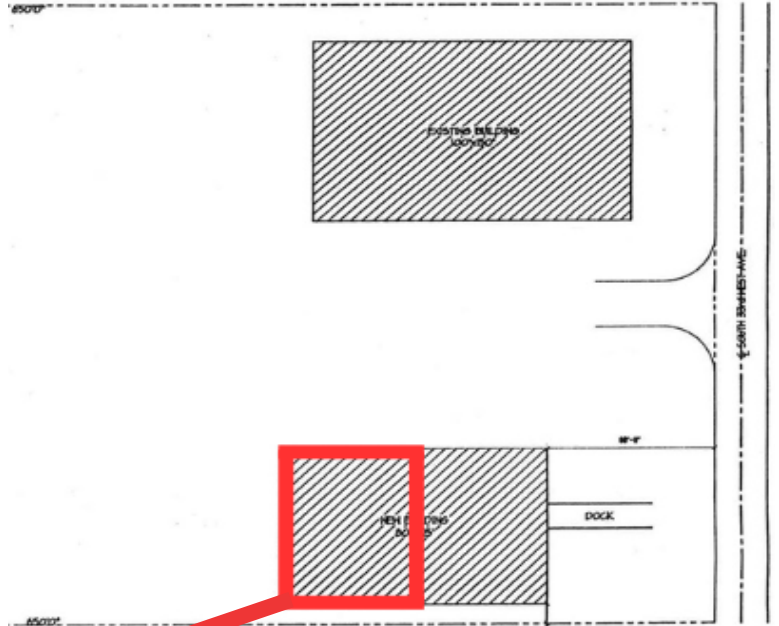
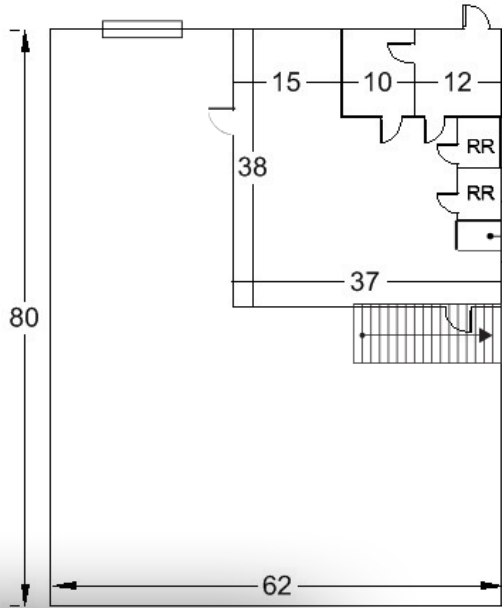


# Insulated Warehouse Space | For Lease

11842-C S 33rd W Ave | Sapulpa, OK 74107

# WIGGIN

PROPERTIES, LLC



**John Watchous**

Advisor

918.991.8519

[jwatchous@wigginprop.com](mailto:jwatchous@wigginprop.com)

**Shawna Hale, CCIM**

Advisor

918.282.8664

[shale@wigginprop.com](mailto:shale@wigginprop.com)