

# 15420 General Williamson

FOR LEASE / SALE



## PROPERTY DESCRIPTION

Introducing an exceptional lease opportunity (Unit 1) or investment opportunity (entire building) in the Lake Travis area. This premier property is in a strategic location within the thriving area of Lake Travis. Boasting modern amenities and meticulous attention to detail, this property represents a compelling prospect for those looking to expand their office space or their portfolio in this bustling commercial hub, directly across from Hudson Bend Middle School. This floorplan lends itself to having a live/work opportunity or being made into an additional office with an upstairs kitchen. This is a blank slate ready for your finishing touches.

## PROPERTY HIGHLIGHTS

- Blank slate- ready for your customizations
- Modern amenities and features
- Strategic location in Lake Travis Area
- Ample parking for tenants and visitors
- Modern Architecture

## OFFERING SUMMARY

Sale Price:	\$1,500,000
Lease Rate:	\$32.00 SF/yr (Gross)
Number of Units:	1
Available SF:	3,038 SF
Building Size:	4,538 SF

DEMOGRAPHICS	1 MILE	3 MILES	5 MILES
Total Households	1,269	9,934	23,558
Total Population	3,043	26,301	60,928
Average HH Income	\$177,145	\$220,648	\$213,246

Gayle Berkbigler, CCIM

512.844.4653

gayle.berkbigler@expcommercial.com

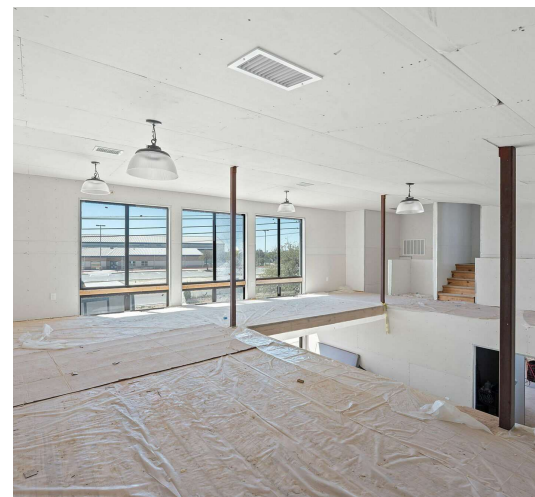
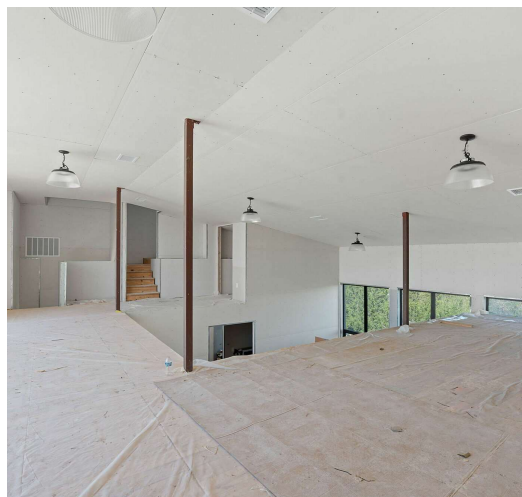
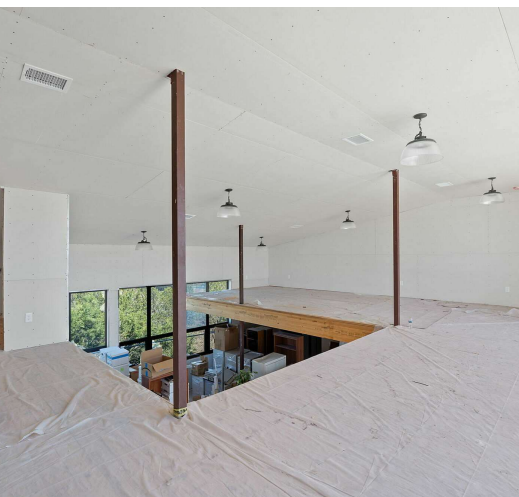
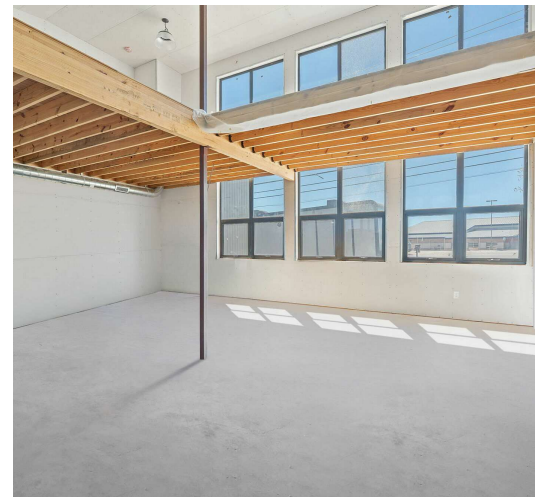
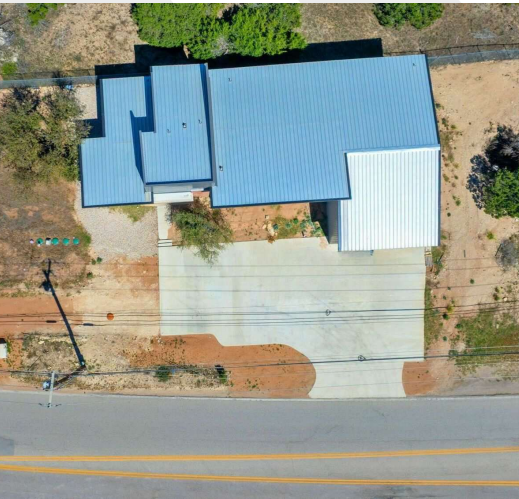


eXp Commercial, LLC, its direct and indirect parents and their subsidiaries (together, "We") obtained the information above from sources believed to be reliable, however, We have not verified its accuracy and make no guarantee, warranty or representation, expressed or implied, about such information. The information contained above is submitted subject to the possibility of errors, omissions, price changes, rental or other conditions, prior sale, lease or financing, or withdrawal without notice. Any projections, opinions, assumptions or estimates of the information contained above or provided in connection therewith, either expressed or implied, are for example only, and they may not represent current or future performance of the subject property. You, together with your tax and legal advisors, should conduct your own thorough investigation of the subject property and potential investment.



# Additional Photos

FOR LEASE/ SALE



Gayle Berkbigler, CCIM  
512.844.4653  
gayle.berkbigler@expcommercial.com



eXp Commercial, LLC, its direct and indirect parents and their subsidiaries (together, "We") obtained the information above from sources believed to be reliable, however, We have not verified its accuracy and make no guarantee, warranty or representation, expressed or implied, about such information. The information contained above is submitted subject to the possibility of errors, omissions, price changes, rental or other conditions, prior sale, lease or financing, or withdrawal without notice. Any projections, opinions, assumptions or estimates of the information contained above or provided in connection therewith, either expressed or implied, are for example only, and they may not represent current or future performance of the subject property. You, together with your tax and legal advisors, should conduct your own thorough investigation of the subject property and potential investment.



# Unit 1 Lease Space

FOR LEASE / SALE



## LEASE INFORMATION

Lease Type:	Gross	Lease Term:	Negotiable
Total Space:	3,038 SF	Lease Rate:	\$32.00 SF/yr

## AVAILABLE SPACES

SUITE	TENANT	SIZE (SF)	LEASE TYPE	LEASE RATE	DESCRIPTION
Unit 1	Available	3,038 SF	Gross	\$32.00 SF/yr	-

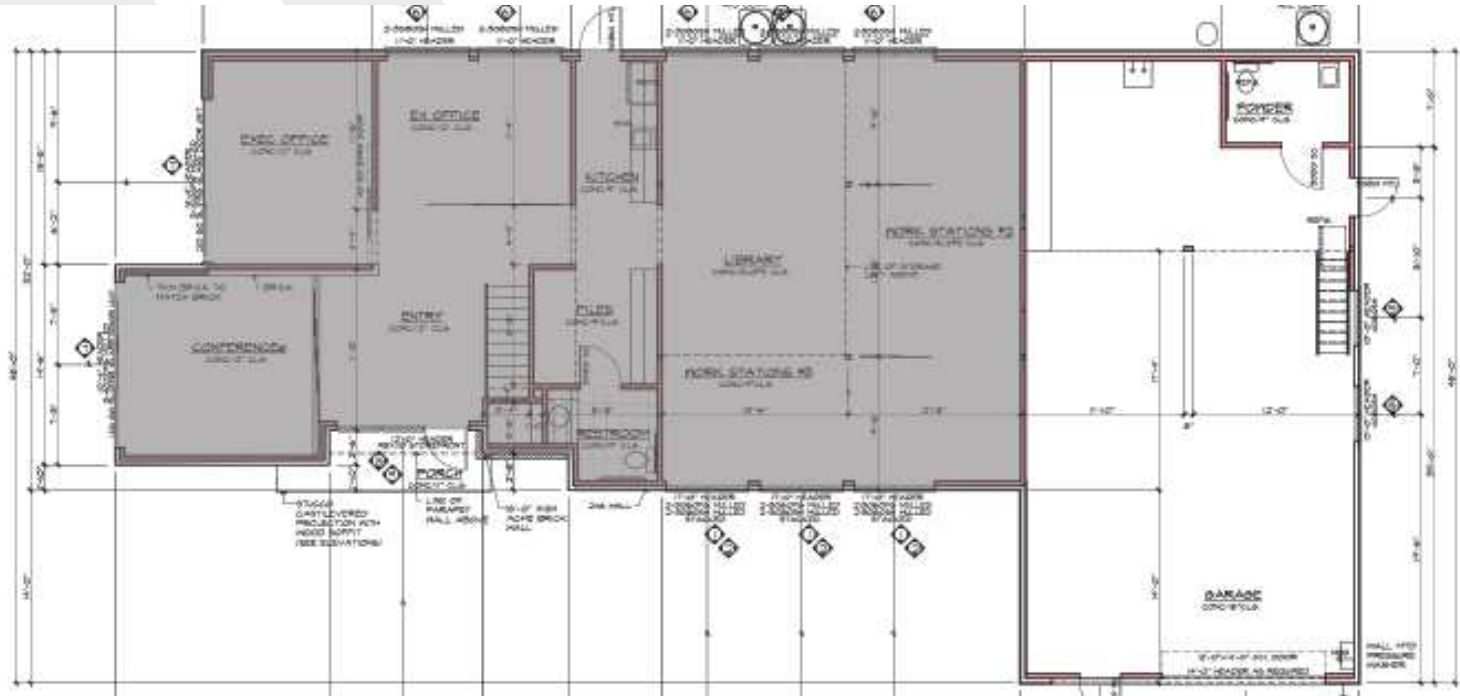
Gayle Berkbigler, CCIM  
512.844.4653  
gayle.berkbigler@expcommercial.com



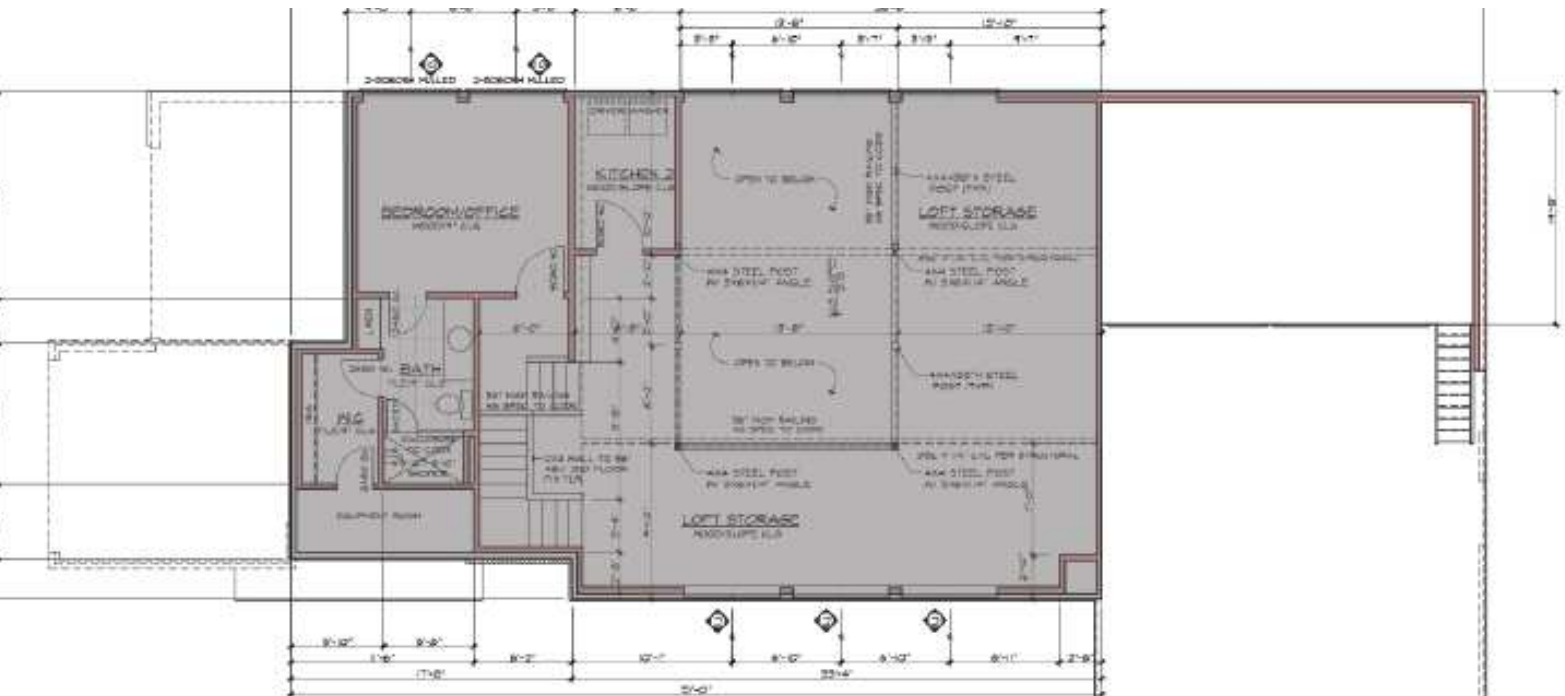
eXp Commercial, LLC, its direct and indirect parents and their subsidiaries (together, "We") obtained the information above from sources believed to be reliable, however, We have not verified its accuracy and make no guarantee, warranty or representation, expressed or implied, about such information. The information contained above is submitted subject to the possibility of errors, omissions, price changes, rental or other conditions, prior sale, lease or financing, or withdrawal without notice. Any projections, opinions, assumptions or estimates of the information contained above or provided in connection therewith, either expressed or implied, are for example only, and they may not represent current or future performance of the subject property. You, together with your tax and legal advisors, should conduct your own thorough investigation of the subject property and potential investment.

# Floor Plans

FOR LEASE / SALE



First Floor - Unit 1



Second Floor - Unit 1

Gayle Berkbigler, CCIM

512.844.4653

gayle.berkbigler@expcommercial.com



eXp Commercial, LLC, its direct and indirect parents and their subsidiaries (together, "We") obtained the information above from sources believed to be reliable, however, We have not verified its accuracy and make no guarantee, warranty or representation, expressed or implied, about such information. The information contained above is submitted subject to the possibility of errors, omissions, price changes, rental or other conditions, prior sale, lease or financing, or withdrawal without notice. Any projections, opinions, assumptions or estimates of the information contained above or provided in connection therewith, either expressed or implied, are for example only, and they may not represent current or future performance of the subject property. You, together with your tax and legal advisors, should conduct your own thorough investigation of the subject property and potential investment.



# Retailer Map

FOR LEASE/ SALE



Gayle Berkbigher, CCIM  
 512.844.4653  
 gayle.berkbigher@expcommercial.com

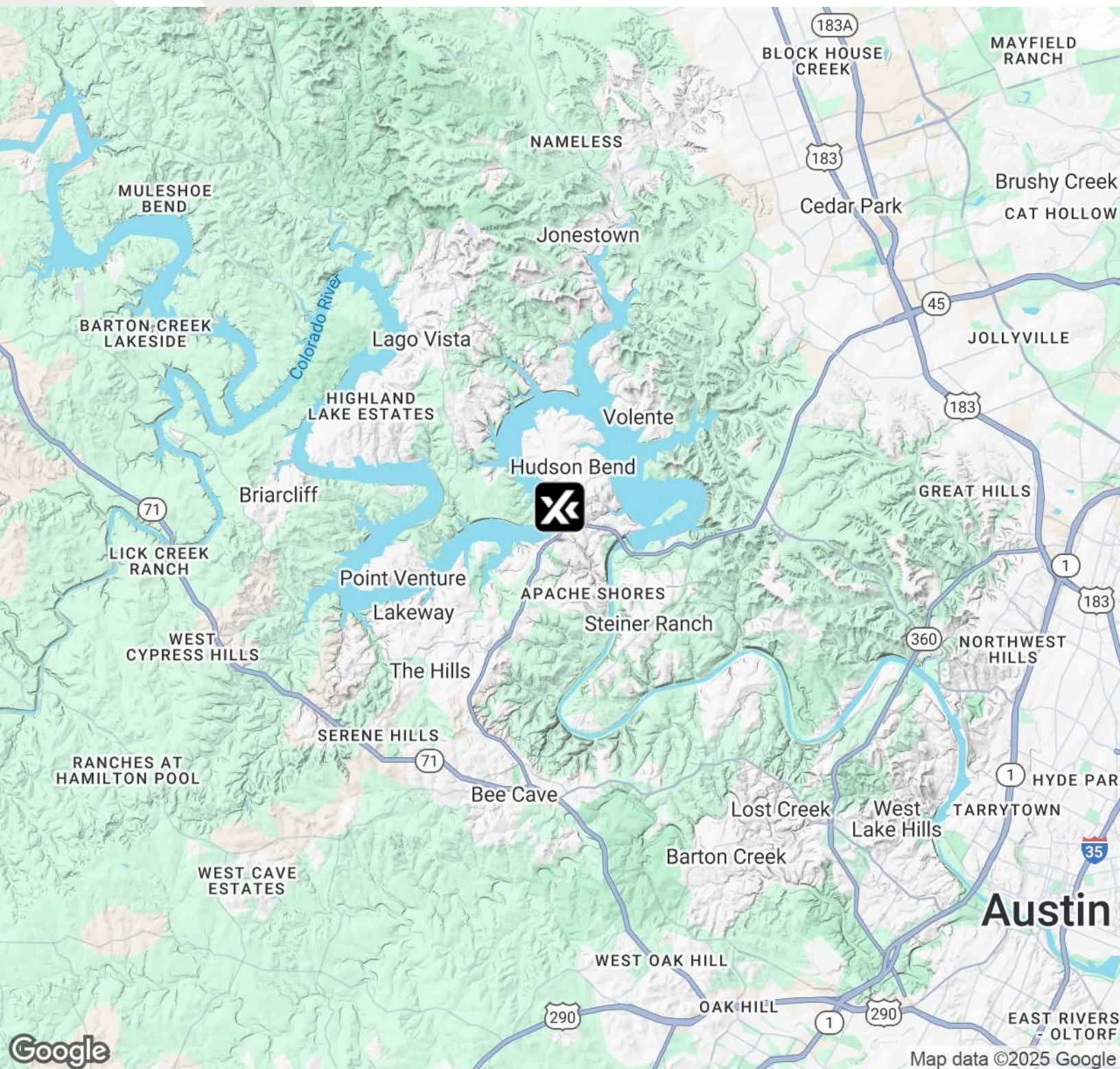


eXp Commercial, LLC, its direct and indirect parents and their subsidiaries (together, "We") obtained the information above from sources believed to be reliable, however, We have not verified its accuracy and make no guarantee, warranty or representation, expressed or implied, about such information. The information contained above is submitted subject to the possibility of errors, omissions, price changes, rental or other conditions, prior sale, lease or financing, or withdrawal without notice. Any projections, opinions, assumptions or estimates of the information contained above or provided in connection therewith, either expressed or implied, are for example only, and they may not represent current or future performance of the subject property. You, together with your tax and legal advisors, should conduct your own thorough investigation of the subject property and potential investment.



# Location Map

FOR LEASE/ SALE



Gayle Berkbigler, CCIM  
512.844.4653  
gayle.berkbigler@expcommercial.com

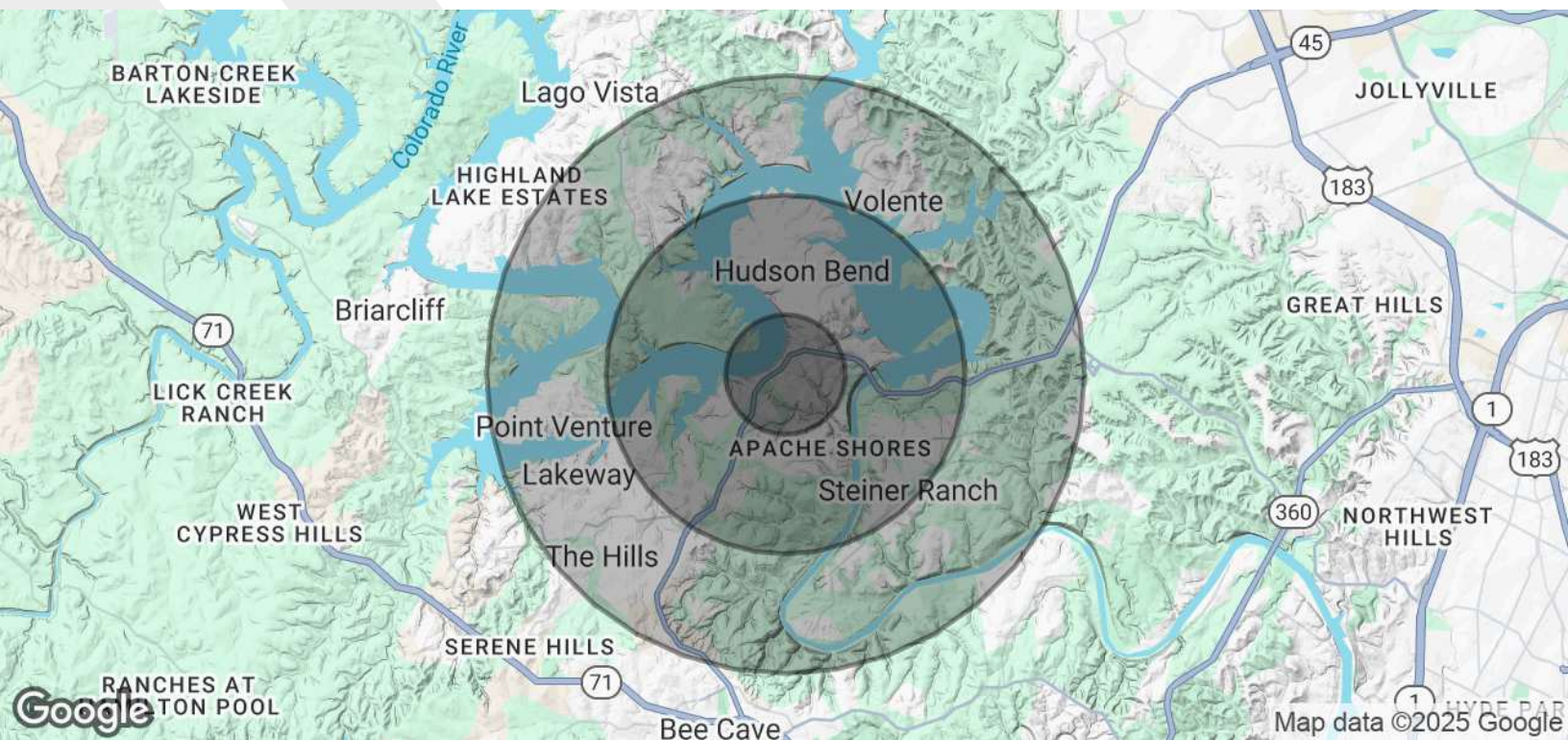


eXp Commercial, LLC, its direct and indirect parents and their subsidiaries (together, "We") obtained the information above from sources believed to be reliable, however, We have not verified its accuracy and make no guarantee, warranty or representation, expressed or implied, about such information. The information contained above is submitted subject to the possibility of errors, omissions, price changes, rental or other conditions, prior sale, lease or financing, or withdrawal without notice. Any projections, opinions, assumptions or estimates of the information contained above or provided in connection therewith, either expressed or implied, are for example only, and they may not represent current or future performance of the subject property. You, together with your tax and legal advisors, should conduct your own thorough investigation of the subject property and potential investment.



# Demographics Map & Report

FOR LEASE/ SALE



POPULATION	1 MILE	3 MILES	5 MILES
Total Population	3,043	26,301	60,928
Average Age	41	41	43
Average Age (Male)	41	41	42
Average Age (Female)	42	42	44
HOUSEHOLDS & INCOME	1 MILE	3 MILES	5 MILES
Total Households	1,269	9,934	23,558
# of Persons per HH	2.4	2.6	2.6
Average HH Income	\$177,145	\$220,648	\$213,246
Average House Value	\$1,111,060	\$904,141	\$886,571

Demographics data derived from AlphaMap

Gayle Berkbighler, CCIM  
**512.844.4653**  
[gayle.berkbighler@expcommercial.com](mailto:gayle.berkbighler@expcommercial.com)



eXp Commercial, LLC, its direct and indirect parents and their subsidiaries (together, "We") obtained the information above from sources believed to be reliable, however, We have not verified its accuracy and make no guarantee, warranty or representation, expressed or implied, about such information. The information contained above is submitted subject to the possibility of errors, omissions, price changes, rental or other conditions, prior sale, lease or financing, or withdrawal without notice. Any projections, opinions, assumptions or estimates of the information contained above or provided in connection therewith, either expressed or implied, are for example only, and they may not represent current or future performance of the subject property. You, together with your tax and legal advisors, should conduct your own thorough investigation of the subject property and potential investment.



# Information About Brokerage Services

*Texas law requires all real estate license holders to give the following information about brokerage services to prospective buyers, tenants, sellers and landlords.*

2-10-2025



## TYPES OF REAL ESTATE LICENSE HOLDERS:

- **A BROKER** is responsible for all brokerage activities, including acts performed by sales agents sponsored by the broker.
- **A SALES AGENT** must be sponsored by a broker and works with clients on behalf of the broker.

## A BROKER'S MINIMUM DUTIES REQUIRED BY LAW (A client is the person or party that the broker represents):

- Put the interests of the client above all others, including the broker's own interests;
- Inform the client of any material information about the property or transaction received by the broker;
- Answer the client's questions and present any offer to or counter-offer from the client; and
- Treat all parties to a real estate transaction honestly and fairly.

## A LICENSE HOLDER CAN REPRESENT A PARTY IN A REAL ESTATE TRANSACTION:

**AS AGENT FOR OWNER (SELLER/LANDLORD):** The broker becomes the property owner's agent through an agreement with the owner, usually in a written listing to sell or property management agreement. An owner's agent must perform the broker's minimum duties above and must inform the owner of any material information about the property or transaction known by the agent, including information disclosed to the agent or subagent by the buyer or buyer's agent. **An owner's agent fees are not set by law and are fully negotiable.**

**AS AGENT FOR BUYER/TENANT:** The broker becomes the buyer/tenant's agent by agreeing to represent the buyer, usually through a written representation agreement. A buyer's agent must perform the broker's minimum duties above and must inform the buyer of any material information about the property or transaction known by the agent, including information disclosed to the agent by the seller or seller's agent. **A buyer/tenant's agent fees are not set by law and are fully negotiable.**

**AS AGENT FOR BOTH - INTERMEDIARY:** To act as an intermediary between the parties the broker must first obtain the written agreement of *each party* to the transaction. The written agreement must state who will pay the broker and, in conspicuous bold or underlined print, set forth the broker's obligations as an intermediary. A broker who acts as an intermediary:

- Must treat all parties to the transaction impartially and fairly;
- May, with the parties' written consent, appoint a different license holder associated with the broker to each party (owner and buyer) to communicate with, provide opinions and advice to, and carry out the instructions of each party to the transaction.
- Must not, unless specifically authorized in writing to do so by the party, disclose:
  - that the owner will accept a price less than the written asking price;
  - that the buyer/tenant will pay a price greater than the price submitted in a written offer; and
  - any confidential information or any other information that a party specifically instructs the broker in writing not to disclose, unless required to do so by law.

**AS SUBAGENT:** A license holder acts as a subagent when aiding a buyer in a transaction without an agreement to represent the buyer. A subagent can assist the buyer but does not represent the buyer and must place the interests of the owner first.

## TO AVOID DISPUTES, ALL AGREEMENTS BETWEEN YOU AND A BROKER SHOULD BE IN WRITING AND CLEARLY ESTABLISH:

- The broker's duties and responsibilities to you, and your obligations under the representation agreement.
- Who will pay the broker for services provided to you, when payment will be made and how the payment will be calculated.

**LICENSE HOLDER CONTACT INFORMATION:** This notice is being provided for information purposes. It does not create an obligation for you to use the broker's services. Please acknowledge receipt of this notice below and retain a copy for your records.

<b>eXp Commercial, LLC</b>	<b>9010212</b>	<b>tx.broker@expcommercial.com</b>	<b>855.450.0324</b>
Licensed Broker /Broker Firm Name or Primary Assumed Business Name	License No.	Email	Phone
<b>Clifford J. Bogart</b>	<b>313043</b>	<b>clifford.bogart@expcommercial.com</b>	<b>214.704.9862</b>
Designated Broker of Firm	License No.	Email	Phone
<b>Clifford J. Bogart</b>	<b>313043</b>	<b>clifford.bogart@expcommercial.com</b>	<b>214.704.9862</b>
Licensed Supervisor of Sales Agent/ Associate	License No.	Email	Phone
<b>Gayle Berkbighler, CCIM</b>	<b>TX #451428</b>	<b>gayle.berkbighler@expcommercial.com</b>	<b>512.844.4653</b>
Sales Agent/Associate's Name	License No.	Email	Phone

\_\_\_\_\_  
Buyer/Tenant/Seller/Landlord Initials

\_\_\_\_\_  
Date