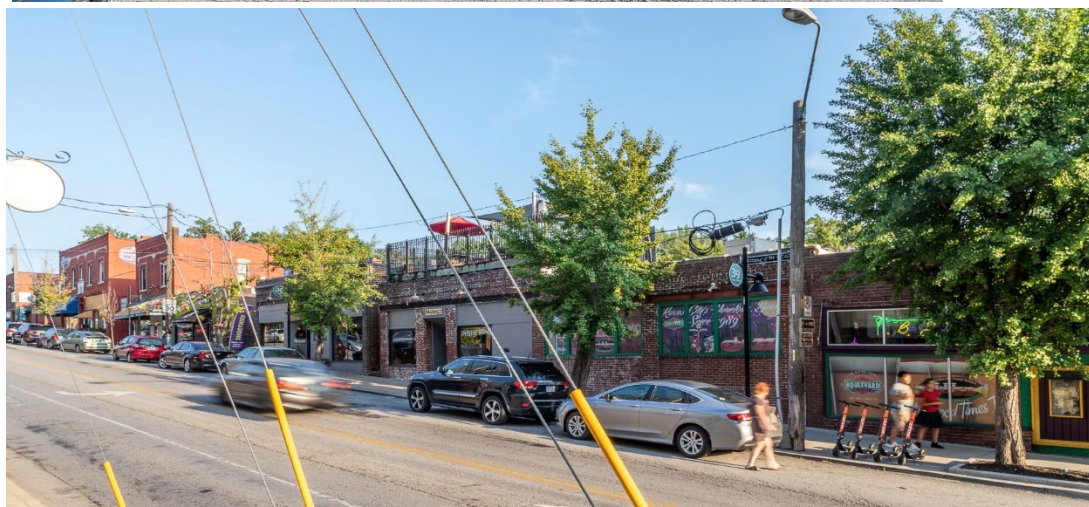




FOR LEASE:

1801, 1803, 1805 W. 39th Street
Kansas City, MO 64111



PROPERTY INFO

- 3,000 +/- SF former restaurant space with a lower-level kitchen prep, storage and office.
- 1,250 SF and 1,450 to 2,900 SF second floor office for lease (Suite 1805, and Suites 1801 A & B)
- 223-unit apartment complex under construction. Late 2024/Early 2025 estimated delivery.
- 125 parking spaces included in new parking garage NOW OPEN.

Adam Lyngar

adam@cadencekc.com

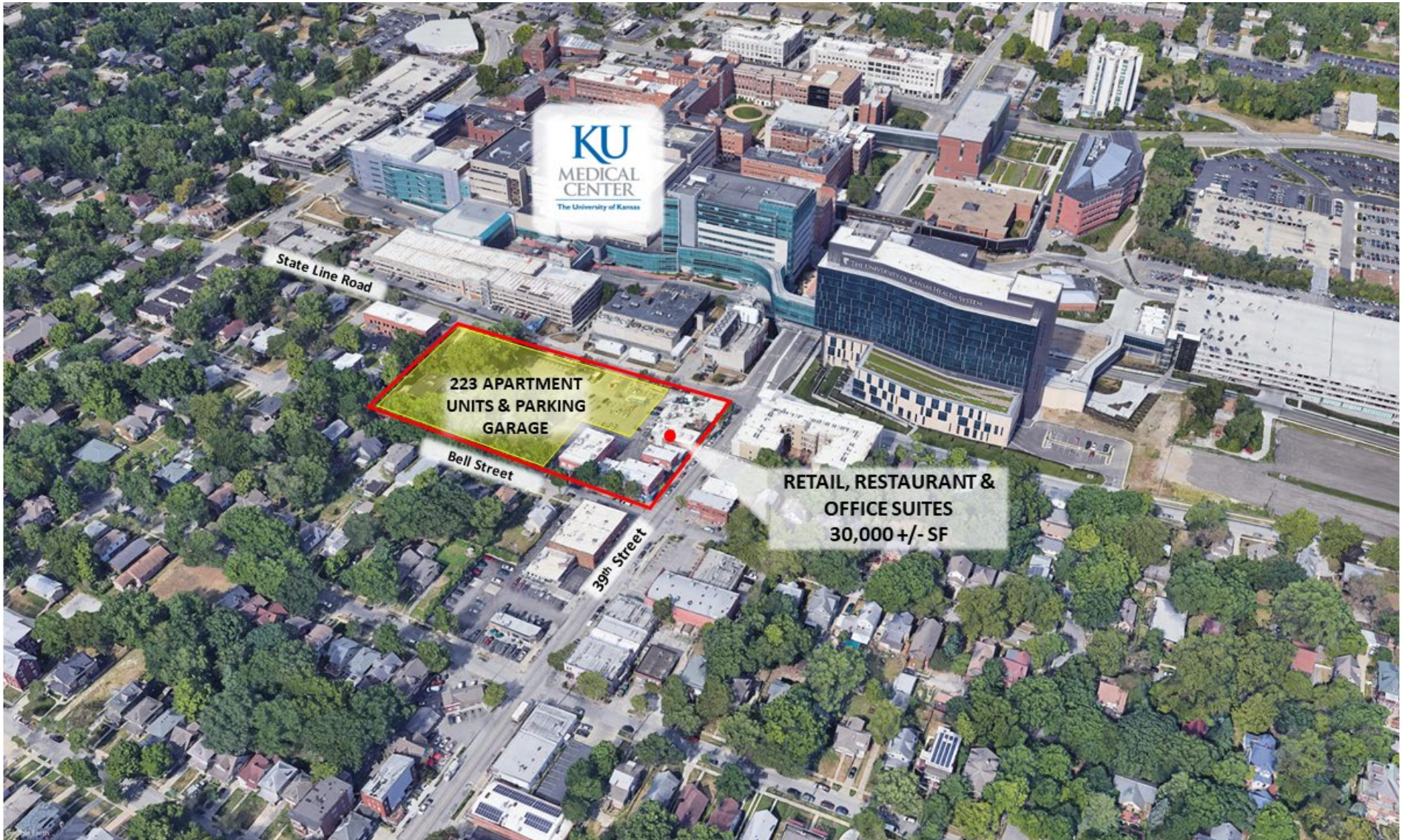
913.747.3326

CADENCE
COMMERCIAL REAL ESTATE



FOR LEASE:

1801, 1803, 1805 W. 39th Street
Kansas City, MO 64111



Adam Lyngar
adam@cadencekc.com
913.747.3326

CADENCE
COMMERCIAL REAL ESTATE



FOR LEASE:

1801, 1803, 1805 W. 39th Street
Kansas City, MO 64111

APARTMENTS
UNDER
CONSTRUCTION

2024/2025 DELIVERY

State Line View (Looking South)



125 SPACE
PARKING GARAGE
NOW OPEN

Bell Street View (Looking North) Trees Removed for Clarity



Bell Street View (Looking North) with Trees



Adam Lyngar
adam@cadencekc.com
913.747.3326

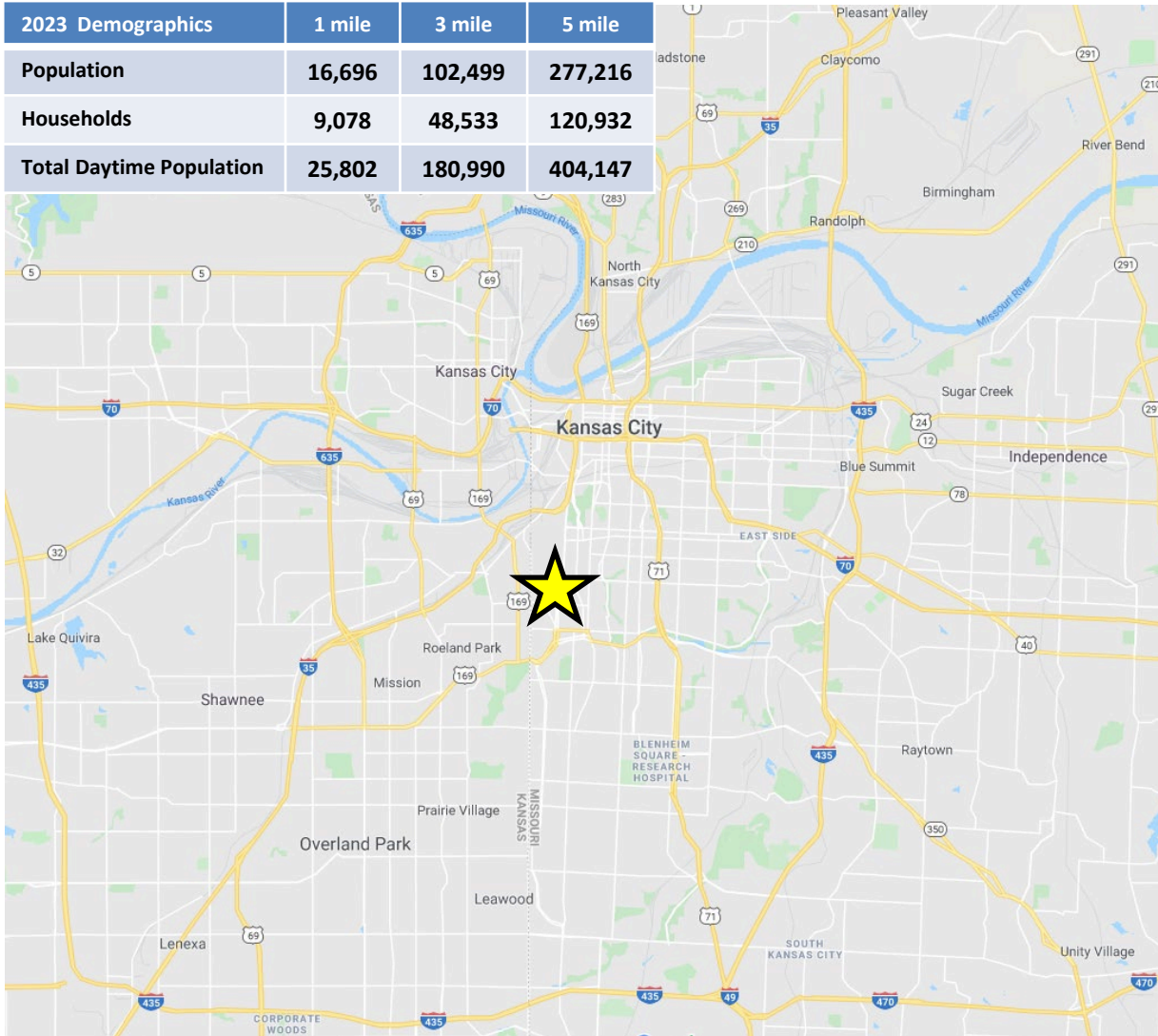
CADENCE
COMMERCIAL REAL ESTATE



FOR LEASE:

1801, 1803, 1805 W. 39th Street
Kansas City, MO 64111

2023 Demographics	1 mile	3 mile	5 mile
Population	16,696	102,499	277,216
Households	9,078	48,533	120,932
Total Daytime Population	25,802	180,990	404,147



Adam Lyngar

adam@cadencekc.com

913.747.3326

CADENCE
COMMERCIAL REAL ESTATE

7939 Floyd, Suite 200, Overland Park, KS 66204 • 913.782.9000 • cadencekc.com