



 SEE A BRIGHTER WAY

For sale or lease

Progress Corporate Park
11601 Research Circle
Alachua, FL 32615

Features

46,440 SF office
Three stories
2.80/1,000 SF parking ratio
Price negotiable

Bryan Rodriguez

Vice President

Bryan.Rodriguez@jll.com

+1 813 387 1307

jll.com

Brad Knop

Vice President

Brad.Knop@jll.com

+1 813 384 1296

Progress Corporate Park's availabilities

Alachua, FL 32615



On behalf of the Tenant, JLL offers the following properties located within Progress Corporate Park:

1. 13706 Innovation Drive

- 20,694 SF
- Office / research lab space
- Available for sublease

2. 13702 Innovation Drive

- 21,549 SF
- Office / research lab space
- Available for sublease

3. 11601 Research Circle

- 46,440 SF
- Office
- Available for lease or sale



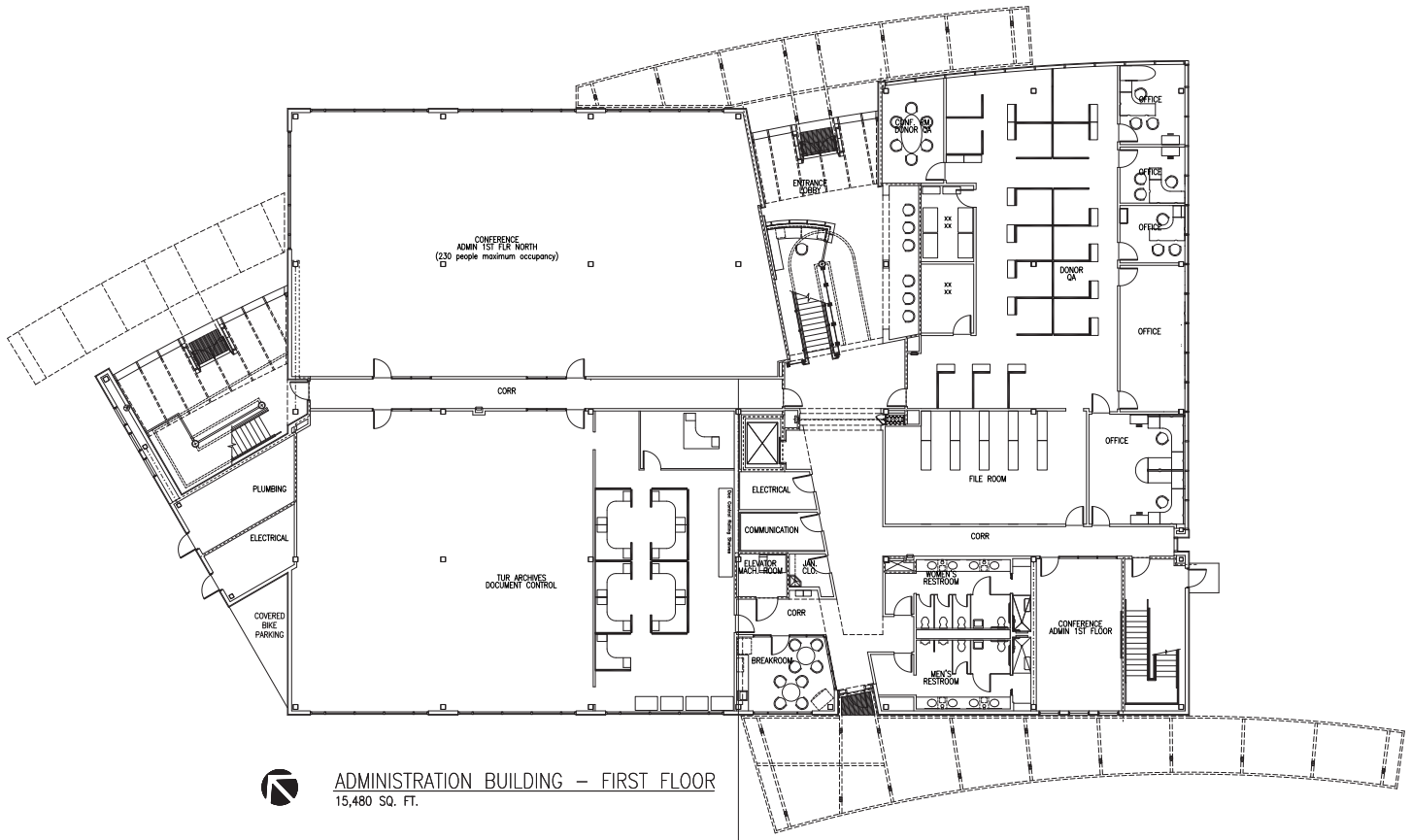
jll.com

Bryan Rodriguez
Vice President
Bryan.Rodriguez@jll.com
+1 813 387 1307

Brad Knop
Vice President
Brad.Knop@jll.com
+1 813 384 1296

Jones Lang LaSalle Americas, Inc. License #: CO508577000

Progress Corporate Park 11601 Research Circle, Alachua, FL 32615



Bryan Rodriguez
Vice President
Bryan.Rodriguez@jll.com
+1 813 387 1307

Brad Knop
Vice President
Brad.Knop@jll.com
+1 813 384 1296

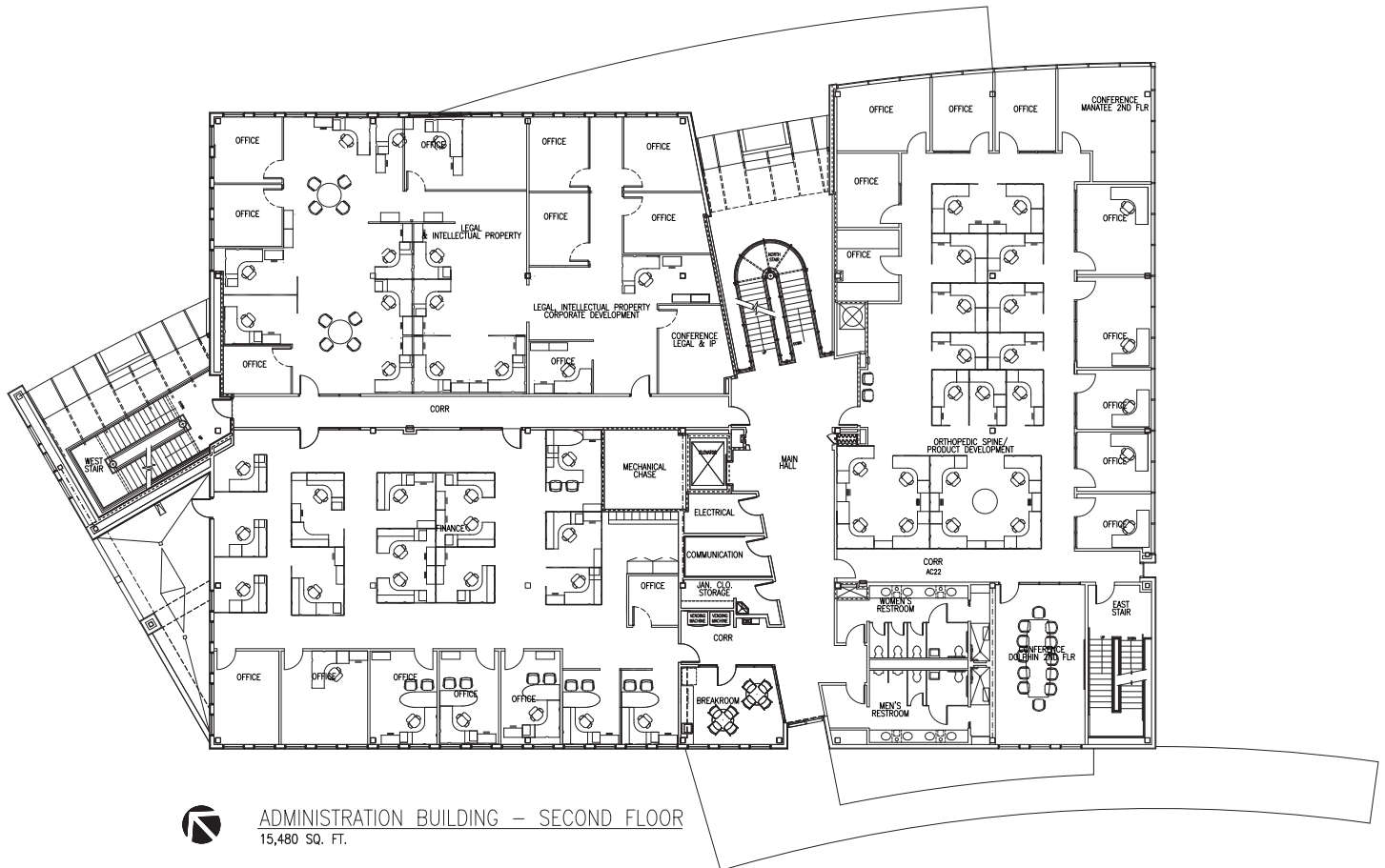
DISCLAIMER

Jones Lang LaSalle Brokerage, Inc., a licensed real estate broker

Although information has been obtained from sources deemed reliable, JLL does not make any guarantees, warranties or representations, express or implied, as to the completeness or accuracy as to the information contained herein. Any projections, opinions, assumptions or estimates used are for example only. There may be differences between projected and actual results, and those differences may be material. JLL does not accept any liability for any loss or damage suffered by any party resulting from reliance on this information. If the recipient of this information has signed a confidentiality agreement with JLL regarding this matter, this information is subject to the terms of that agreement. Images courtesy of CoStar. ©2023. Jones Lang LaSalle Brokerage, Inc. All rights reserved.

Progress Corporate Park

11601 Research Circle, Alachua, FL 32615



Bryan Rodriguez
Vice President
Bryan.Rodriguez@jll.com
+1 813 387 1307

Brad Knop
Vice President
Brad.Knop@jll.com
+1 813 384 1296

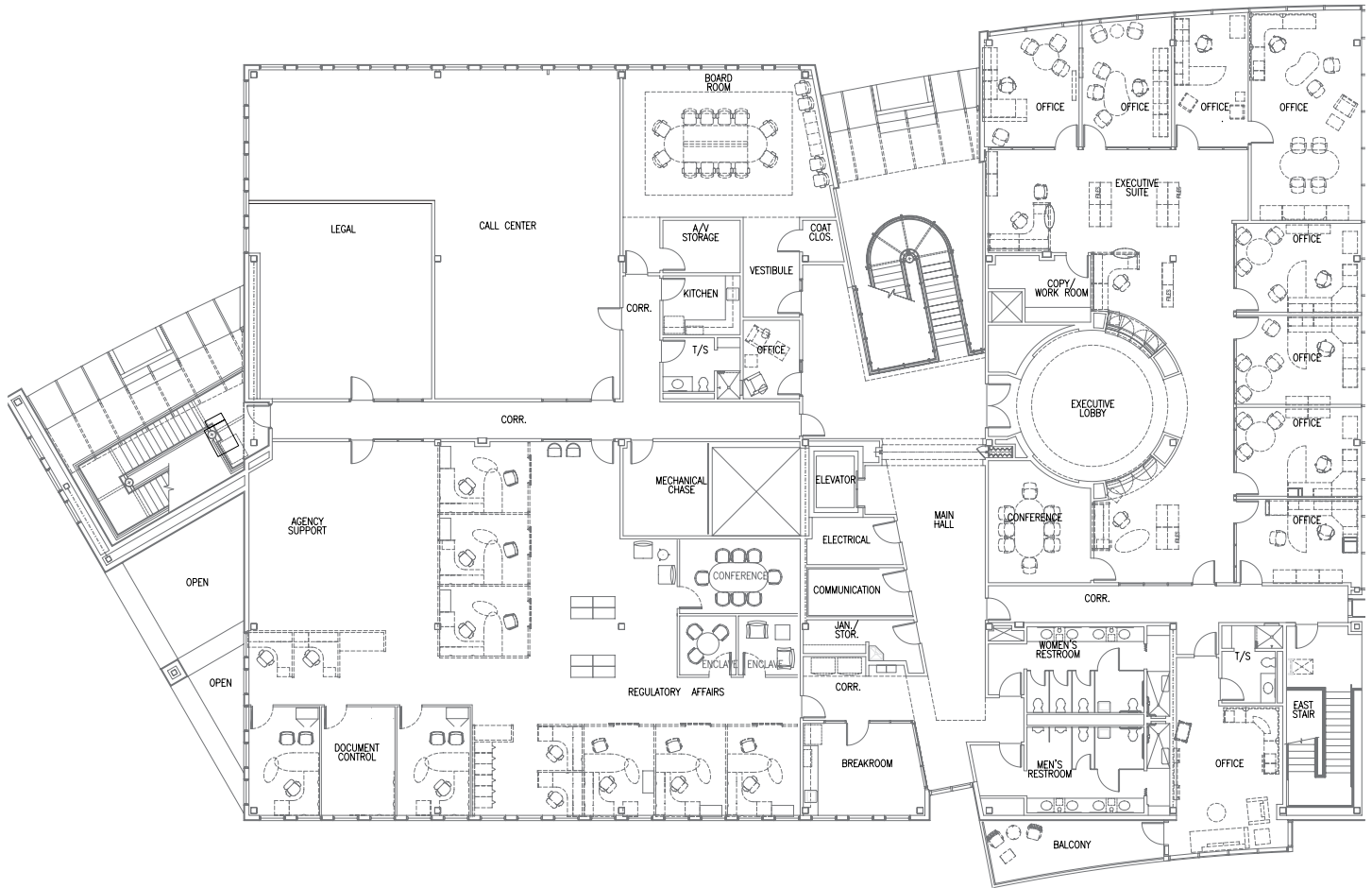
DISCLAIMER

Jones Lang LaSalle Brokerage, Inc., a licensed real estate broker

Although information has been obtained from sources deemed reliable, JLL does not make any guarantees, warranties or representations, express or implied, as to the completeness or accuracy as to the information contained herein. Any projections, opinions, assumptions or estimates used are for example only. There may be differences between projected and actual results, and those differences may be material. JLL does not accept any liability for any loss or damage suffered by any party resulting from reliance on this information. If the recipient of this information has signed a confidentiality agreement with JLL regarding this matter, this information is subject to the terms of that agreement. Images courtesy of CoStar. ©2023. Jones Lang LaSalle Brokerage, Inc. All rights reserved.

Progress Corporate Park

11601 Research Circle, Alachua, FL 32615



Bryan Rodriguez
Vice President
Bryan.Rodriguez@jll.com
+1 813 387 1307

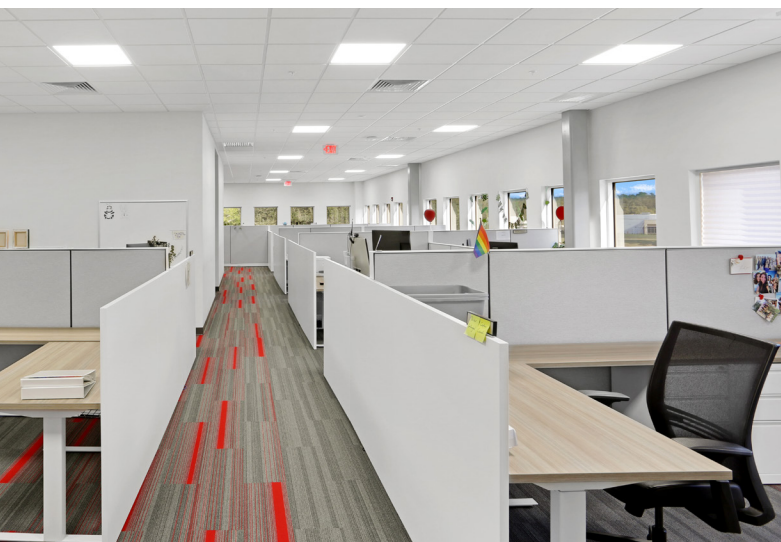
Brad Knop
Vice President
Brad.Knop@jll.com
+1 813 384 1296

DISCLAIMER

Jones Lang LaSalle Brokerage, Inc., a licensed real estate broker

Although information has been obtained from sources deemed reliable, JLL does not make any guarantees, warranties or representations, express or implied, as to the completeness or accuracy as to the information contained herein. Any projections, opinions, assumptions or estimates used are for example only. There may be differences between projected and actual results, and those differences may be material. JLL does not accept any liability for any loss or damage suffered by any party resulting from reliance on this information. If the recipient of this information has signed a confidentiality agreement with JLL regarding this matter, this information is subject to the terms of that agreement. Images courtesy of CoStar. ©2023. Jones Lang LaSalle Brokerage, Inc. All rights reserved.

Progress Corporate Park 11601 Research Circle Alachua, FL 32615



jll.com

Bryan Rodriguez
Vice President
Bryan.Rodriguez@jll.com
+1 813 387 1307

Brad Knop
Vice President
Brad.Knop@jll.com
+1 813 384 1296

Jones Lang LaSalle Americas, Inc. License #: CO508577000

Progress Corporate Park

11601 Research Circle Alachua, FL 32615



Building specs

- 46,440 SF office
- Three stories
- 2.80/1,000 SF parking ratio
- Price negotiable
- 50 KW natural gas, emergency generator for life safety equipment / IT equipment
- 2 Zone HVAC



Progress Corporate Park 11601 Research Circle Alachua, FL 32615



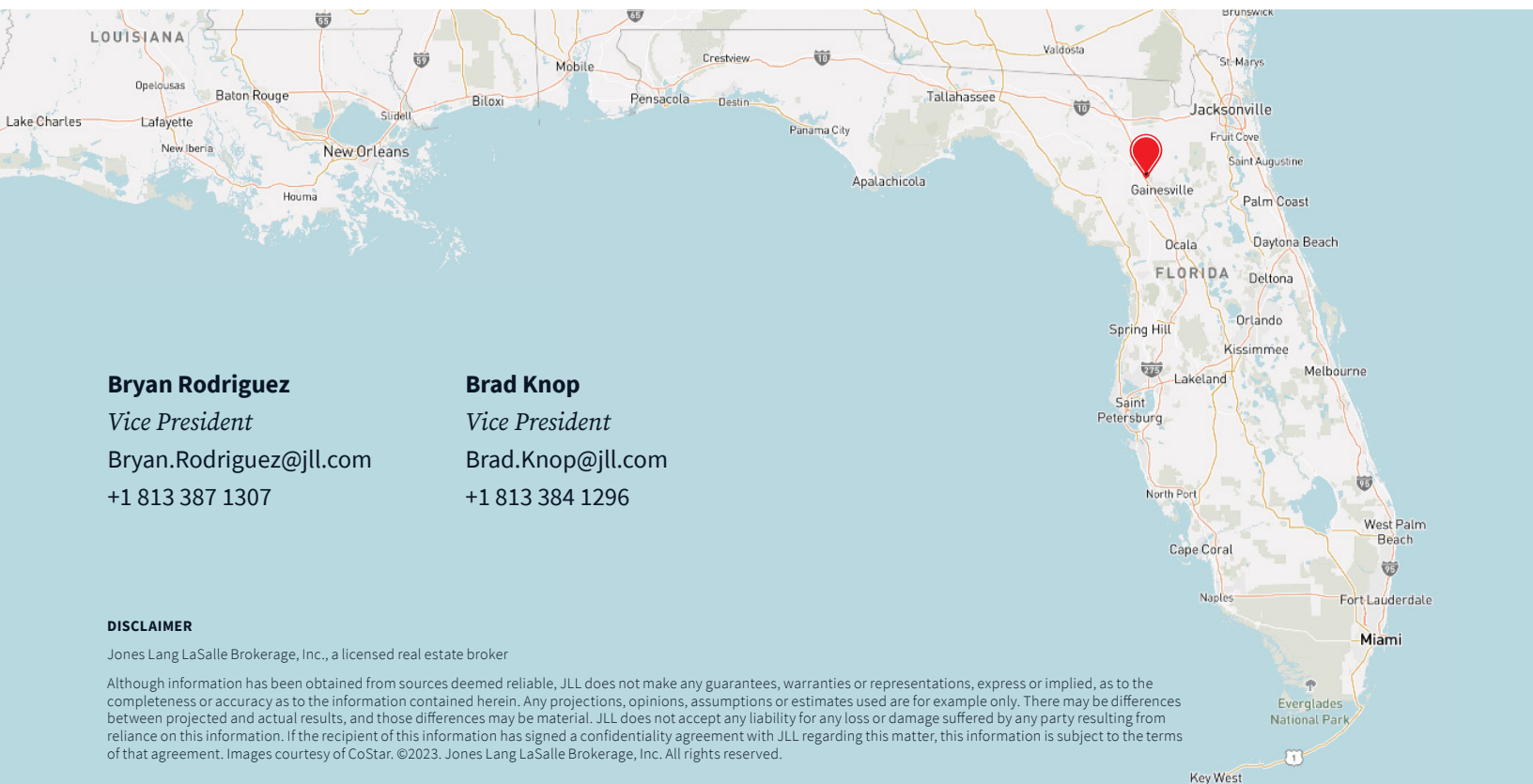
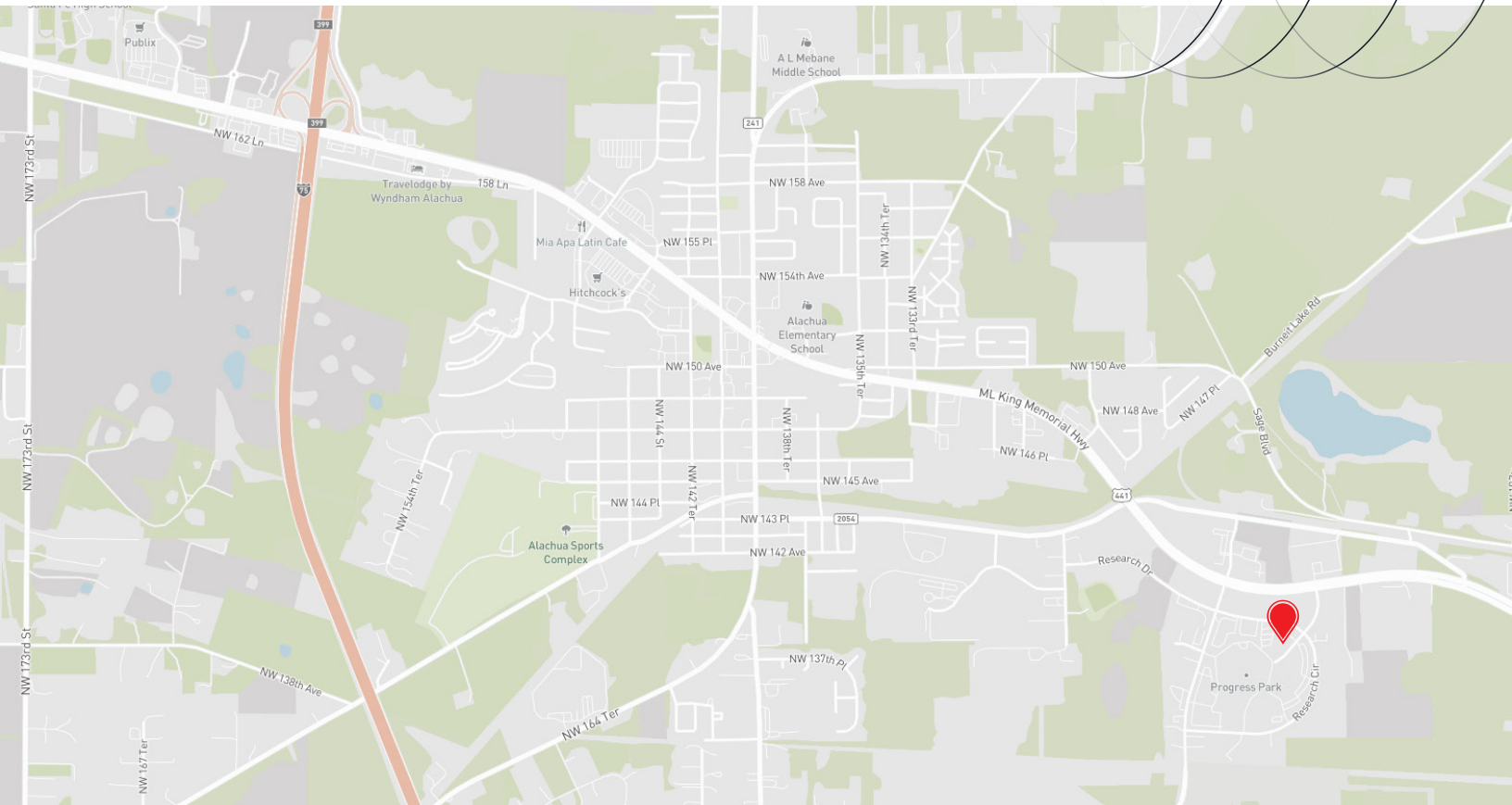
jll.com

Bryan Rodriguez
Vice President
Bryan.Rodriguez@jll.com
+1 813 387 1307

Brad Knop
Vice President
Brad.Knop@jll.com
+1 813 384 1296

Jones Lang LaSalle Americas, Inc. License #: CO508577000

Progress Corporate Park 11601 Research Circle Alachua, FL 32615



Bryan Rodriguez
Vice President
Bryan.Rodriguez@jll.com
+1 813 387 1307

Brad Knop
Vice President
Brad.Knop@jll.com
+1 813 384 1296

DISCLAIMER

Jones Lang LaSalle Brokerage, Inc., a licensed real estate broker

Although information has been obtained from sources deemed reliable, JLL does not make any guarantees, warranties or representations, express or implied, as to the completeness or accuracy as to the information contained herein. Any projections, opinions, assumptions or estimates used are for example only. There may be differences between projected and actual results, and those differences may be material. JLL does not accept any liability for any loss or damage suffered by any party resulting from reliance on this information. If the recipient of this information has signed a confidentiality agreement with JLL regarding this matter, this information is subject to the terms of that agreement. Images courtesy of CoStar. ©2023. Jones Lang LaSalle Brokerage, Inc. All rights reserved.