

For Sale

1.69± Acres for Development

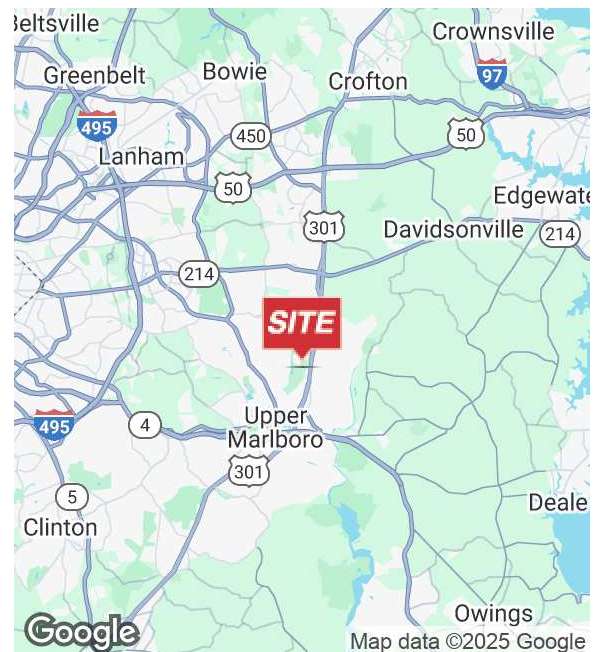


## Presidential Golf Drive, Parcel B-10

Upper Marlboro, Maryland 20774

### Property Highlights

- Total of 1.69± acres for development
- Zoned CGO, which permits retail, office, multifamily, townhouses and more
- Beechtree has over 1,875 existing homes
- Average household income with one mile is \$236,332
- Population within five miles is 67,686
- Adjacent to the Lake Presidential Golf Club
- Enjoys golf course and lake views
- Close to Route 301 with access to Route 50 and the Capital Beltway (I-495/I-95)
- SALE PRICE: \$200,000



**Jeffrey D. Ludwig**

O: 301 918 2923  
jludwig@naimichael.com

**Barbara Richman Kahn**

O: 301 918 2952  
brichman@naimichael.com

**Jeffrey D.K. Ludwig**

O: 301 918 2924  
kludwig@naimichael.com

**Sally Ludwig**

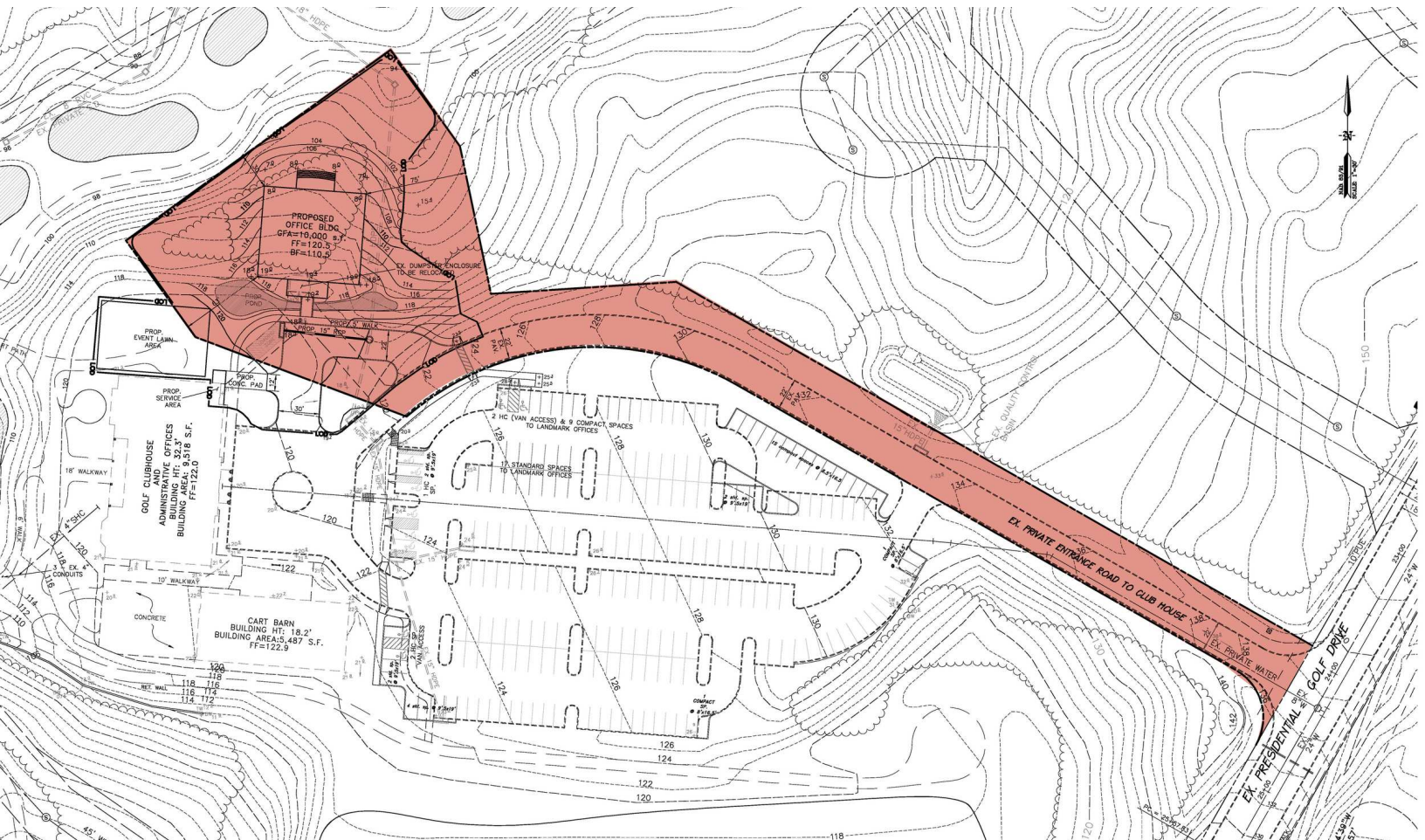
O: 301 918 2956  
sludwig@naimichael.com



10100 Business Pkwy  
Lanham, MD 20706  
301 459 4400 tel  
[www.naimichael.com](http://www.naimichael.com)



For Sale  
1.69± Acres for Development





For Sale  
1.69± Acres for Development



**NAI**Michael

The information contained herein has been given to us by the owner of the property or other sources we deem reliable. We have no reason to doubt its accuracy, but we do not guarantee it. Floor plans, site plans and other graphic representations of this property have been reduced and reproduced, and are not necessarily to scale. All information should be verified prior to purchase or lease.