



Crossroads Building for Lease

1656 WASHINGTON STREET
KANSAS CITY, MISSOURI

Property Highlights

- Creative offices and restaurant/retail space available
- Free gated parking
- Recently renovated exterior and interior common areas
- Building signage available
- Exposed concrete floors and lofted ceilings throughout
- Office lease rate \$20.00-\$22.00/sf, net of janitorial
- Retail lease rate \$24.00/sf, NNN

Space Availability

- 1st Floor: Suite C: 1,138 rsf
Suite H: 550 rsf
1,688 rsf contiguous
Suite G: 3,405 rsf (restaurant)
- 2nd Floor: 987 rsf
2,472 rsf
3,949 rsf
7,219 rsf
15,600 rsf contiguous (Entire 2nd Floor)
- 3rd Floor: 7,219 rsf
- Up to 22,819 rsf contiguous

For information, please contact:

John M. Hoefler, SIOR

Senior Managing Director, Principal
t 816-268-4248
jhoefler@nzimmer.com

Nick Suarez, SIOR, CCIM

Executive Managing Director, Principal
t 816-512-1012
nsuarez@nzimmer.com

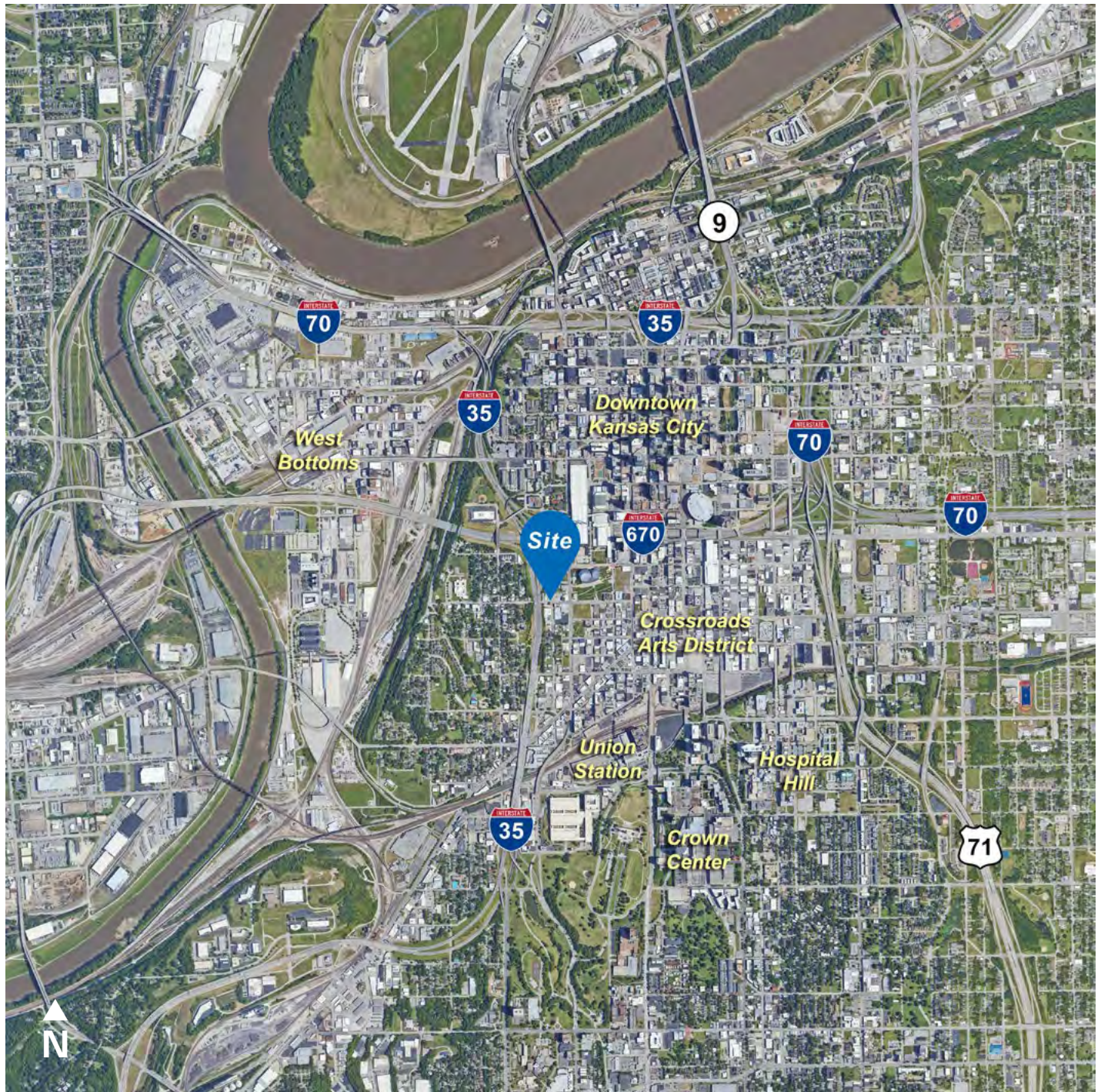
1220 Washington Street, Suite
300
Kansas City, MO 64105
nmrkzimmer.com



NEWMARK
ZIMMER

The information contained herein has been obtained from sources deemed reliable but has not been verified and no guarantee, warranty or representation, either express or implied, is made with respect to such information. Terms of sale or lease and availability are subject to change or withdrawal without

1656 WASHINGTON STREET, KANSAS CITY, MISSOURI



CONTACT

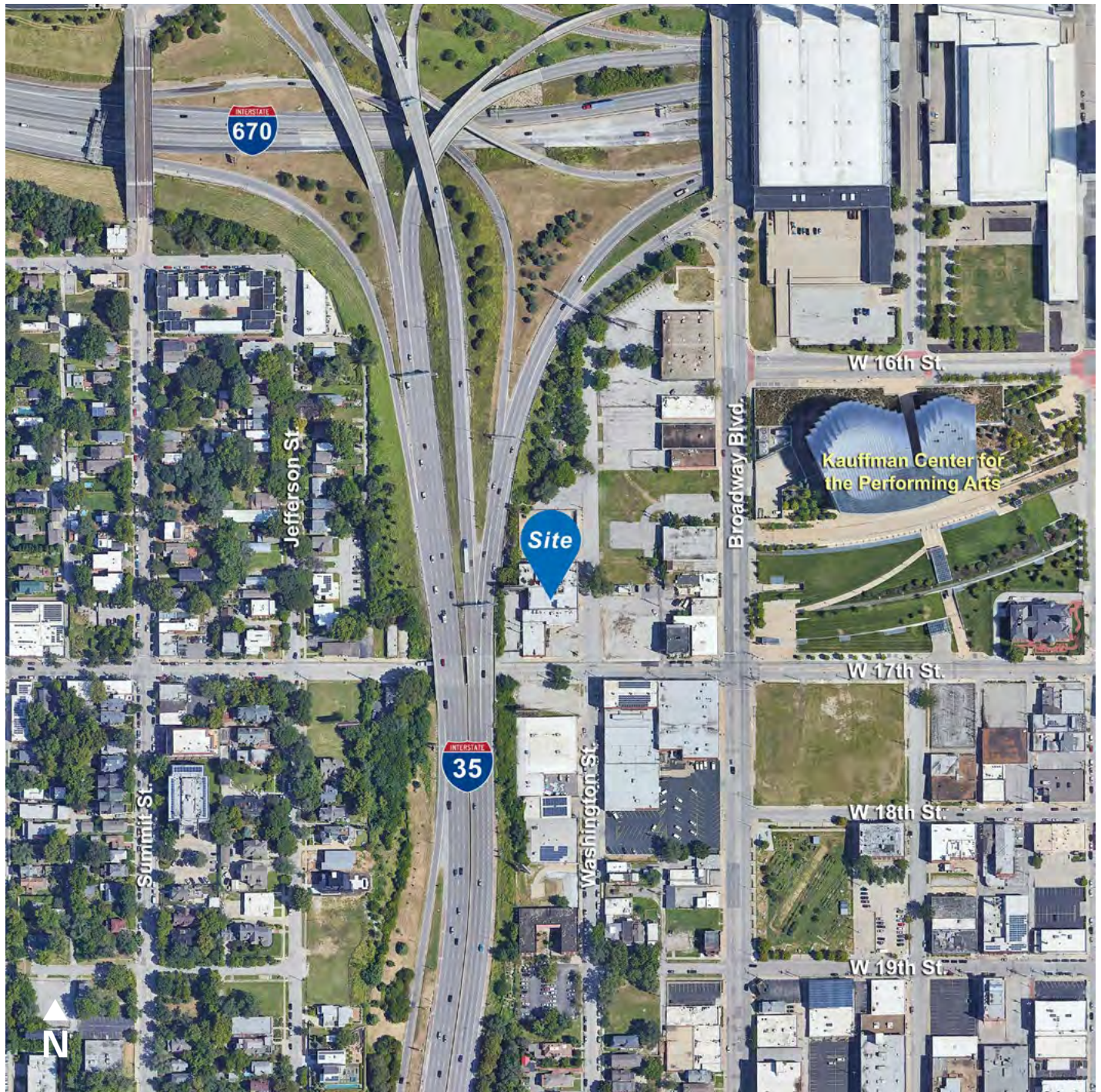
John M. Hoefler, SIOR
Senior Managing Director, Principal
t 816-268-4248
jhoefler@nzimmer.com

Nick Suarez, SIOR, CCIM
Executive Managing Director, Principal
t 816-512-1012
nsuarez@nzimmer.com

nmrkzimmer.com

NEWMARK
ZIMMER

1656 WASHINGTON STREET, KANSAS CITY, MISSOURI



CONTACT

John M. Hoefler, SIOR
Senior Managing Director, Principal
t 816-268-4248
jhoefler@nzimmer.com

Nick Suarez, SIOR, CCIM
Executive Managing Director, Principal
t 816-512-1012
nsuarez@nzimmer.com

nmrkzimmer.com

NEWMARK
ZIMMER

1656 WASHINGTON STREET, KANSAS CITY, MISSOURI



CONTACT

John M. Hoefler, SIOR
Senior Managing Director, Principal
t 816-268-4248
jhoefler@nzimmer.com

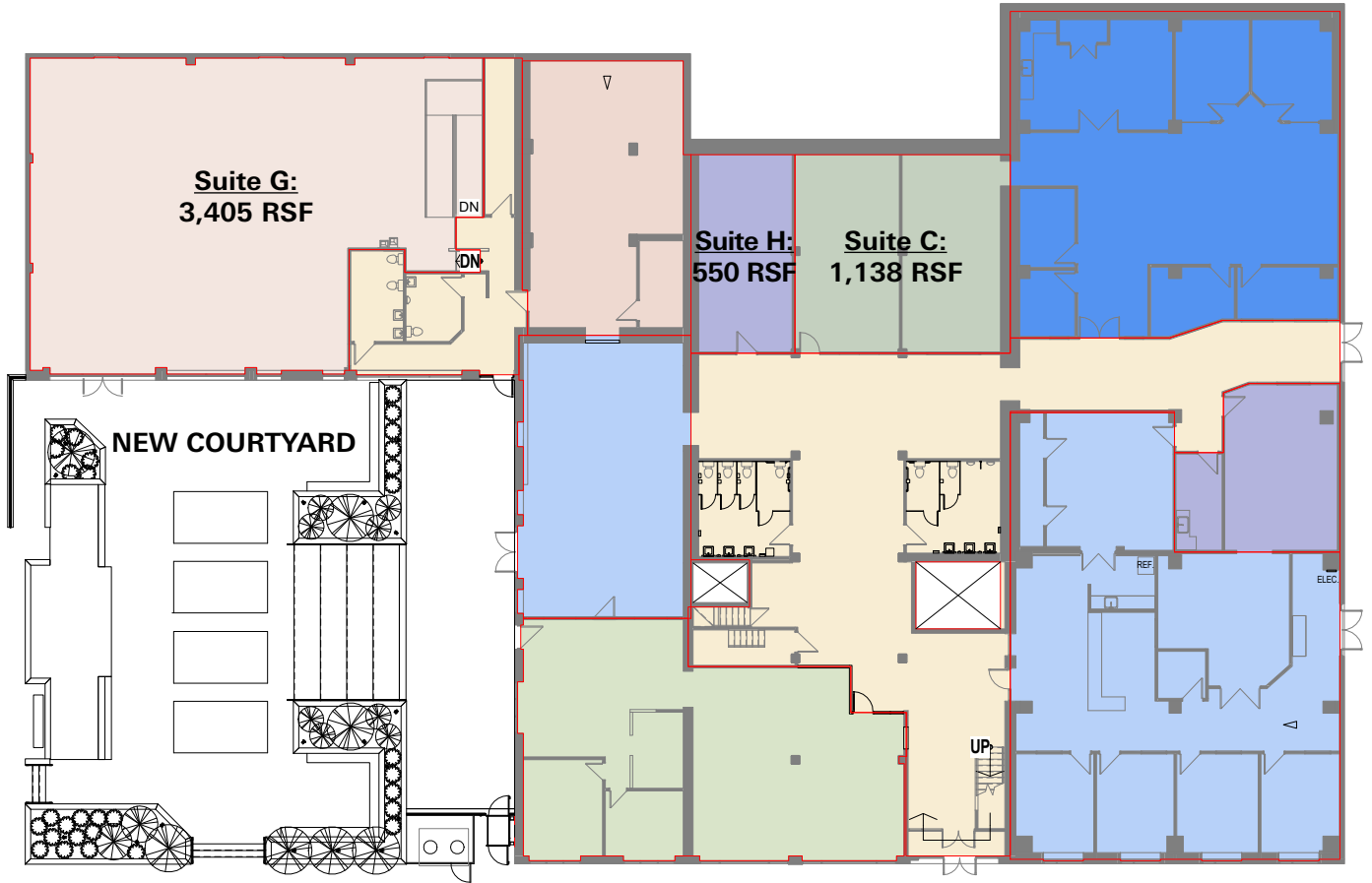
Nick Suarez, SIOR, CCIM
Executive Managing Director, Principal
t 816-512-1012
nsuarez@nzimmer.com

nmrkzimmer.com

NEWMARK
ZIMMER

1656 WASHINGTON STREET, KANSAS CITY, MISSOURI

Floor Plan - First Floor



CONTACT

John M. Hoefler, SIOR

Senior Managing Director, Principal

t 816-268-4248

jhoefler@nzimmer.com

Nick Suarez, SIOR, CCIM

Executive Managing Director, Principal

t 816-512-1012

nsuarez@nzimmer.com

nmrkzimmer.com

NEWMARK
ZIMMER

Floor Plan - Second Floor



CONTACT

John M. Hoefler, SIOR

Senior Managing Director, Principal

t 816-268-4248

jhoefler@nzimmer.com

Nick Suarez, SIOR, CCIM

Executive Managing Director, Principal

t 816-512-1012

nsuarez@nzimmer.com

nmrkzimmer.com

Floor Plan - Third Floor



CONTACT

John M. Hoefler

Managing Director

t 816-268-4248

jhoefler@nzimmer.com

nmrkzimmer.com

Nick Suarez, SIOR, CCIM

Senior Managing Director, Principal

t 816-512-1012

nsuarez@nzimmer.com