



1865 BEECH STREET, WANTAGH, NY

FOR SALE: ±5,450 SF Mixed Use Building

PRICE: \$1,500,000. Possible subdivision

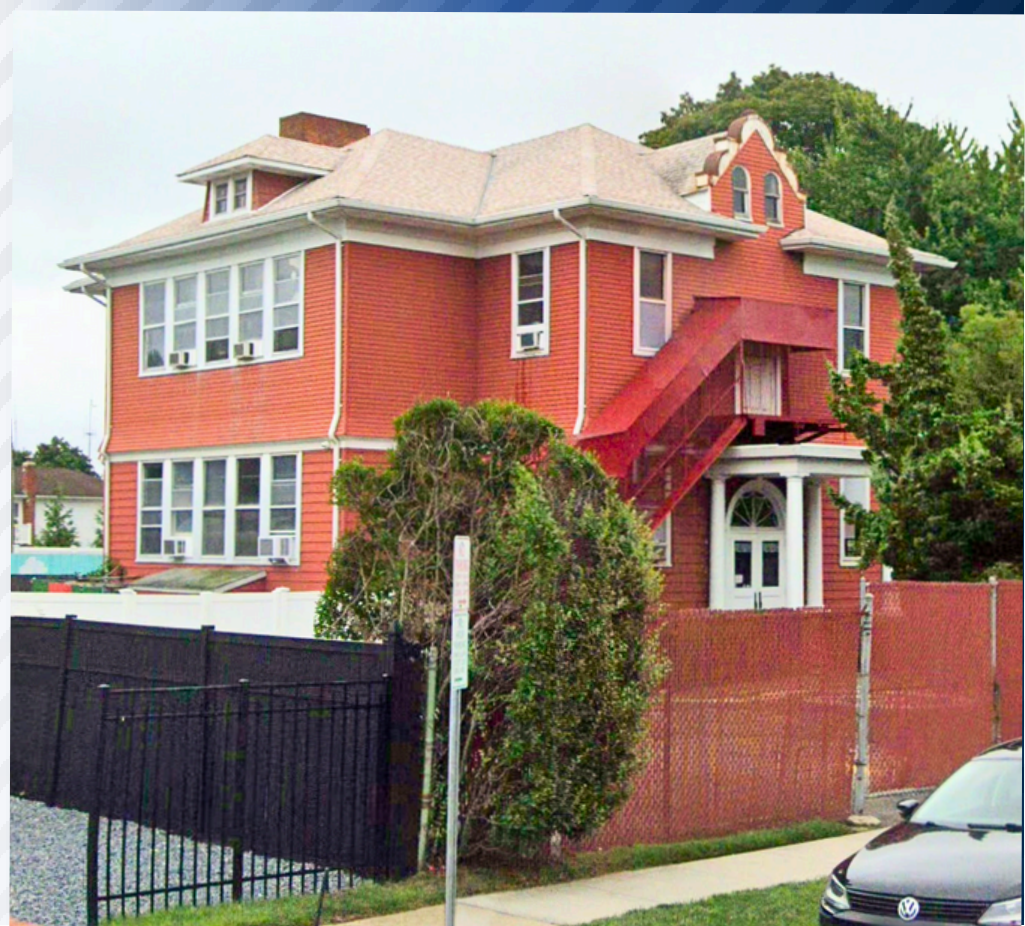


Gary Pezza CIREC

Chief Commercial Associate

516.972.4700

gary.pezza@dgnyccommercial.com



Property Highlights

FOR SALE: ±5,450 SF Mixed Use Building

| | | |
|----------------|-------------------|----------|
| Building Size: | First Floor | 2,746 SF |
| | Second Floor | 2,690 SF |
| | Finished Basement | 2,690 SF |

Land Area: 0.56 Acres (±24,272 SF)

Frontage: ±150'

Depth: ±165'

Tax Map Section: 57

Block: 209

Lot: 32

Zoning: "Residence A" District

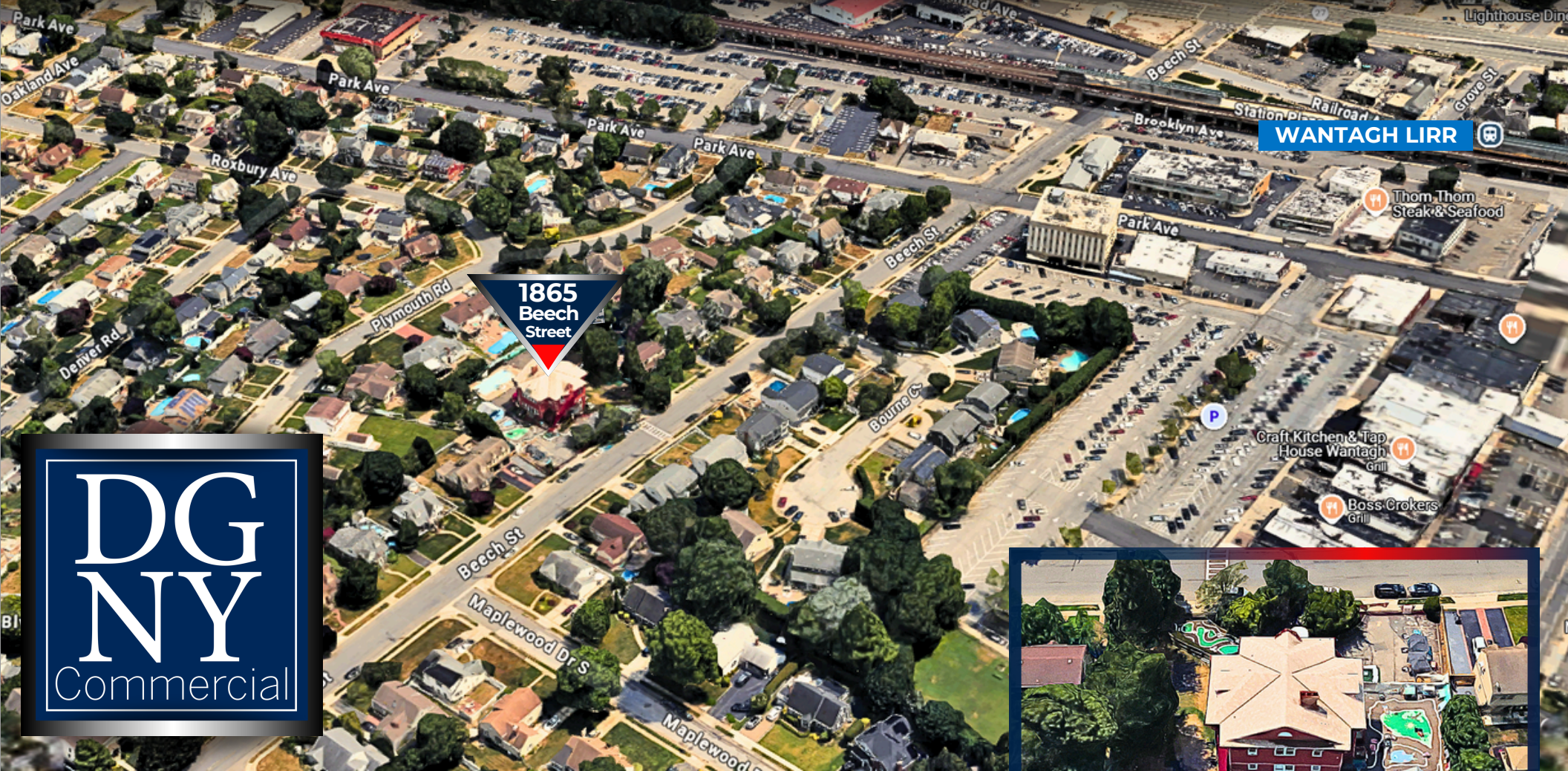
(Former use: Pre-School Facility)

- Close proximity to Sunrise highway, Wantagh State Parkway, and Seaford Oyster Bay Expressway
- Potential use: Childcare Facility

POSSIBLE SUBDIVISION

1865 BEECH STREET, WANTAGH, NY

FOR SALE: ±5,450 SF Mixed Use Building



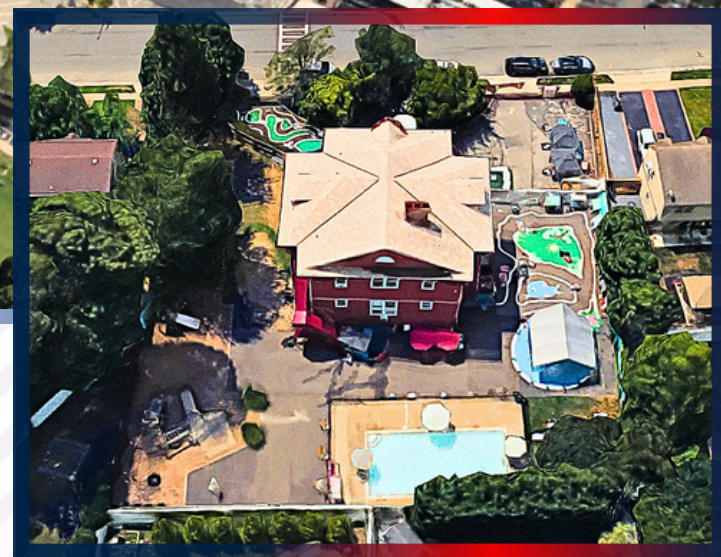
For more information on this exclusive, contact:

Gary Pezza CIREC

Chief Commercial Associate

516.972.4700

gary.pezza@dgnyccommercial.com



©2025 DGN Commercial, LLC. The information contained in the communication is strictly confidential. All rights reserved. This information has been obtained from sources believed to be reliable, but has not been verified. No warranty or representation, express or implied, is made as to the accuracy or completeness of the information contained herein and same is submitted subject to errors, omissions, change of price, rental or other conditions, withdrawal without notice and to any special listing conditions imposed by the property owner(s).