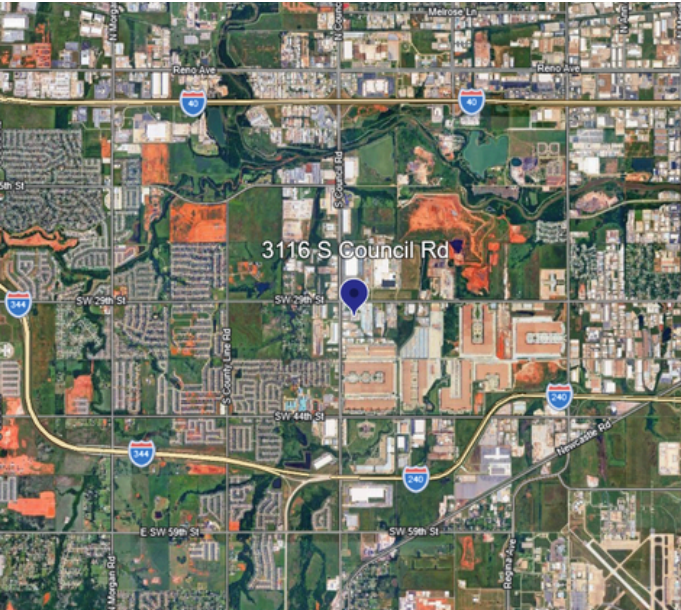


FOR LEASE

AVAILABLE: 9,595 SF

3116 S COUNCIL ROAD, OKLAHOMA CITY, OK 73179

\$16/SF NNN



TUCKER CASON

Vice President, OKC

(405) 323-8505

tcason@mercercorpany.com

PROPERTY FEATURES

- Available SF: 9,595
- Land Area: 6 AC
- Office SF: 2,375
- 18' Clear Height
- 4x Oversized Grade Level Doors (16'x12')
- 2x Grade Level Doors
- 400 AMP | 3 Phase | 240 Volt Power

KADEN GFELLER

Associate

(405) 706-6872

kgfeller@mercercorpany.com

AVAILABLE: 9,595 SF

3116 S COUNCIL ROAD, OKLAHOMA CITY, OK 73179



TUCKER CASON

Vice President, OKC

(405) 323-8505

tcason@mercero-company.com

KADEN GFELLER

Associate

(405) 706-6872

kgfeller@mercero-company.com

The information contained herein has been given to us by the owner of the property or other sources we deem reliable. We have no reason to doubt its accuracy, but we do not guarantee it. All information should be verified before purchase or lease.

Mercer Company CRE
726 W. Sheridan Avenue, Suite 190
Oklahoma City OK 73102

mercero-company.com/okc
(405) 768-2948