

10 Fifth Avenue

Corner of 5th Ave & 8th St | Greenwich Village

[Click here for virtual tour](#)



10 Fifth Avenue

Corner of 5th Ave & 8th St | Greenwich Village

PROPERTY HIGHLIGHTS

- Prime Fifth Avenue corner space
- Steps from NYU
- Easily accessible via the West 4th St/ Washington Sq and 8th St/NYU train stations
- Neighbors include: Washington Square Park, NYU, Loring Place, Stumptown Coffee Roasters, McNally Jackson Goods for Study, SHMONE, Pane Pasta, Solidcore, One Fifth, Claudette, & More

SIZE

Ground Floor 2,300 SF
Lower Level ~1,000 SF

FRONTAGE

~60'

ASKING RENT

Upon Request

POSSESSION

ASAP

TRANSPORTATION

A C E B D F M N Q R W

CONTACT OUR BROKERS FOR MORE INFORMATION

CAROLINA AZIZ
CAziz@ksrny.com
516.640.6961

MADDY SOFFER
MSoffe@ksrny.com
347.752.3350

IKE BIBI
IBibi@ksrny.com
347.417.2860



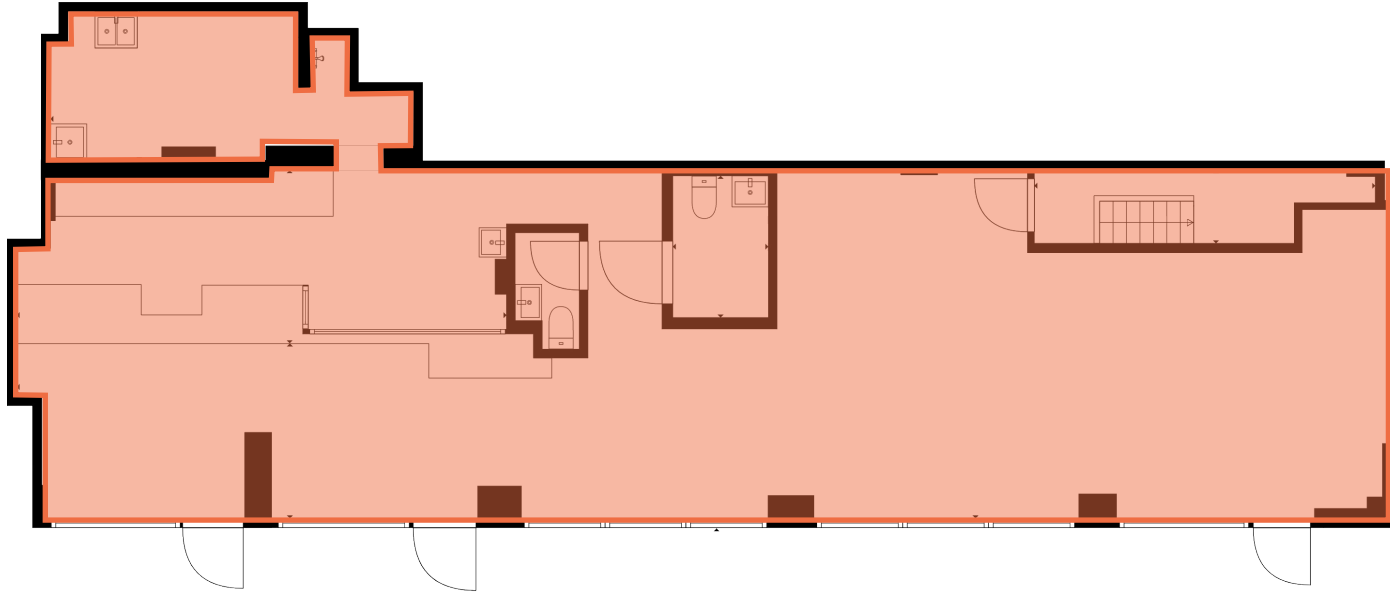
All information supplied in this marketing presentation and/or flyer is from sources deemed reliable and is furnished subject to errors, omissions, modifications, removal of listings from sale/lease and to any listing condition. Any square footage, dimensions, floor plans and/or technical data set forth are approximations and are subject to further elaboration/confirmation.



10 Fifth Avenue

Corner of 5th Ave & 8th St | Greenwich Village

FLOOR PLANS:
GROUND FLOOR - 2,300 SF



LOWER LEVEL - 1,000 SF (APPROX)

