

**Professional Medical / Office Building    ASKING PRICE: \$1,995,000.00**



**Building Size: 12,314 +/- sf**

**Space Available: 5,000 +/- SF suite**

**◆ 2,600 +/- SF suite avail. 6/ 2026**

**Block/Lot: 1410 / 2**

**Parking: Ample on site**

**Use: Professional Office**

**RE Taxes: 64,2112 (2025)**

**Frank Sortino  
Vice President, Broker Associate  
fsortino@foresitecr.com  
Cell: 609-247-5800**

#### **Comments:**

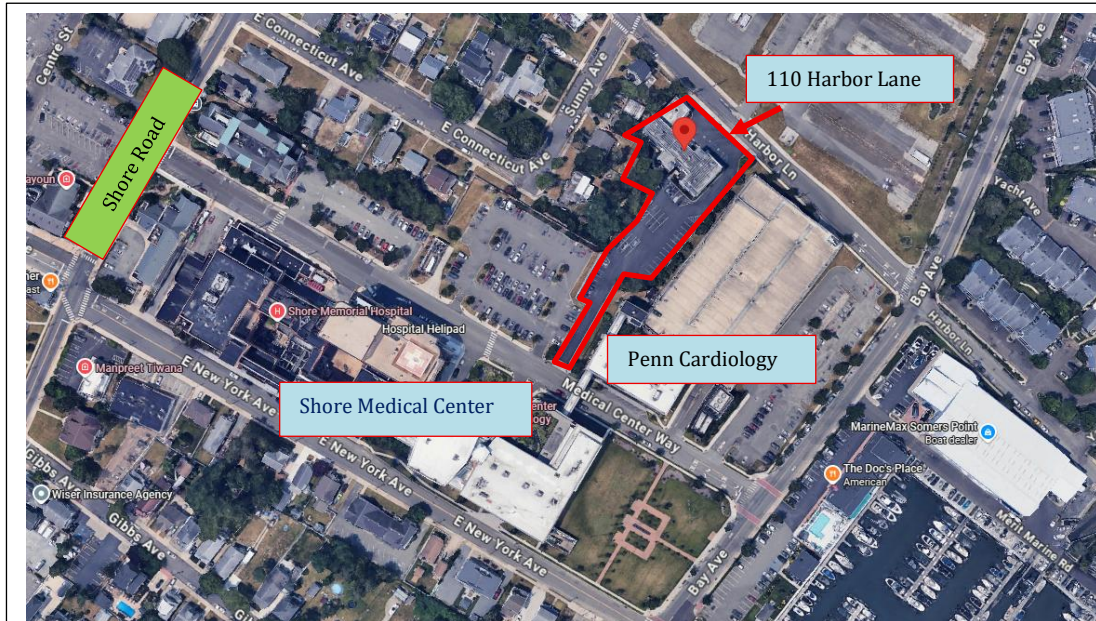
- Prestigious building located across from Shore Medical Center
- 2<sup>nd</sup> floor available for lease
- ADA accessible via elevator
- Potential to demise space for 2 suites
- Fully built out for medical use
- Parking on-site opposite hospital entrance
- Near Shore Rd, **public transit 1 block away**

**ForeSite Commercial Realty** is a full-service commercial brokerage based in Atlantic County specializing in Office, Industrial, Warehouse, Retail, Multi-Family & Land sites for business or investment, representing owners & tenant/buyers throughout Southern NJ. For inspections by appointment or further information on this or any commercial property, call:

**609-646-1919.**

All information is from sources deemed to be reliable; however, no warranty or representation is made as to the accuracy of the information provided herein by ForeSite Commercial Realty (its principals, employees or agents). All information is submitted subject to errors, omissions, or changes of availability and/or terms, which may be changed without notice or liability. No liability of any kind is to be imposed upon the broker herein. Many factors affect property value, and the prospect agrees to take full responsibility for adequately investigating any potential conditions that may affect their ownership and/or usage of the real estate. All are advised and expected to retain qualified professionals for competent advice; ForeSite Commercial is a brokerage firm and does not represent itself as a qualified professional in any other discipline.

Prime location near Hospital with public transit on Shore Road



2<sup>nd</sup> Floor plan

