

# 4600

140th AVE N SUITE 190 & 200

MERIDIAN CONCOURSE CENTER

For Lease  
5,415 SF

## // CONTACTS

JT Faircloth, SIOR  
Senior Director  
813 833 3242  
[JT.Faircloth@cushwake.com](mailto:JT.Faircloth@cushwake.com)

Casey Perry  
Director  
813 233 6564  
[Casey.G.Perry@cushwake.com](mailto:Casey.G.Perry@cushwake.com)





# // PROPERTY HIGHLIGHTS



5,415 SF TOTAL



3,264 SF WAREHOUSE



2,151 SF OFFICE SPACE



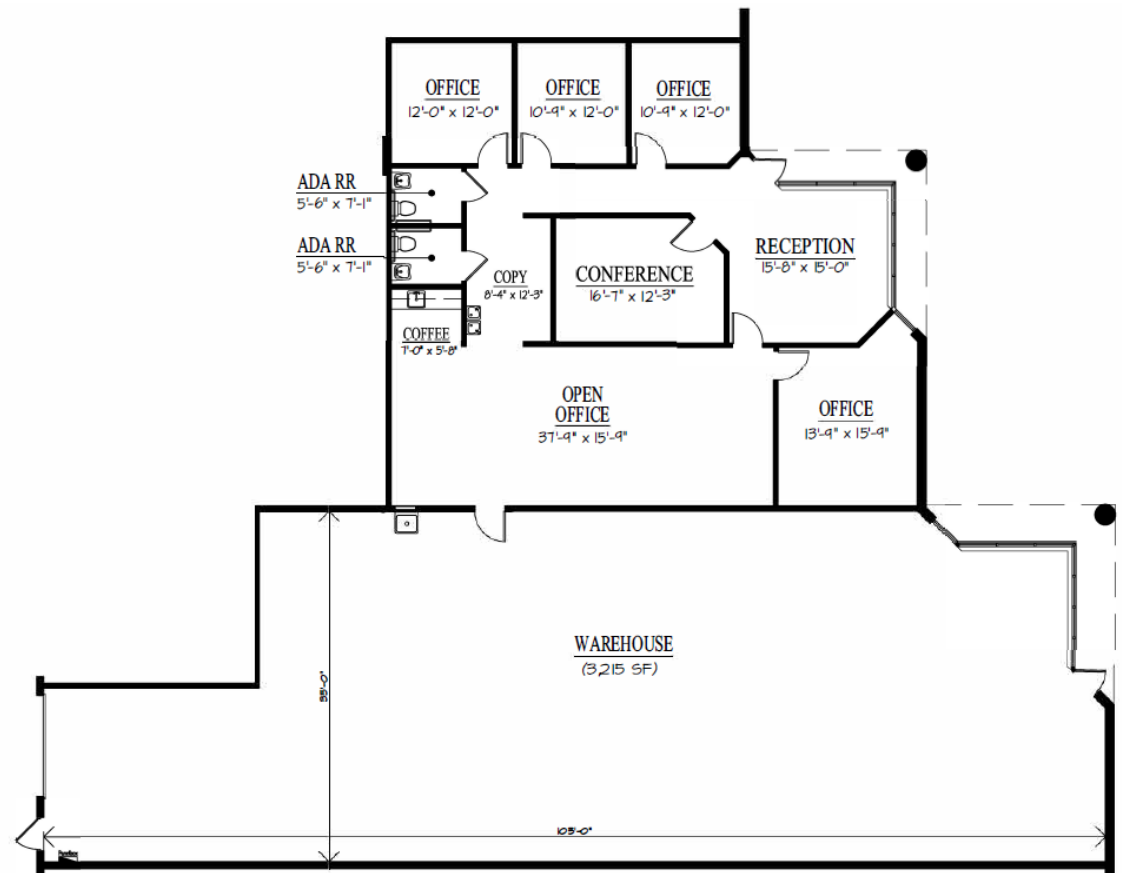
1 GRADE LEVEL DOOR



20' CLEAR HEIGHT



AVAILABLE MARCH 2026



©2025 Cushman & Wakefield. All rights reserved. The information contained in this communication is strictly confidential. This information has been obtained from sources believed to be reliable but has not been verified. NO WARRANTY OR REPRESENTATION, EXPRESS OR IMPLIED, IS MADE AS TO THE CONDITION OF THE PROPERTY (OR PROPERTIES) REFERENCED HEREIN OR AS TO THE ACCURACY OR COMPLETENESS OF THE INFORMATION CONTAINED HEREIN, AND SAME IS SUBMITTED SUBJECT TO ERRORS, OMISSIONS, CHANGE OF PRICE, RENTAL OR OTHER CONDITIONS, WITHDRAWAL WITHOUT NOTICE, AND TO ANY SPECIAL LISTING CONDITIONS IMPOSED BY THE PROPERTY OWNER(S). ANY PROJECTIONS, OPINIONS OR ESTIMATES ARE SUBJECT TO UNCERTAINTY AND DO NOT SIGNIFY CURRENT OR FUTURE PROPERTY PERFORMANCE.

// **MERIDIAN CONCOURSE CENTER**  
4600 140th Ave N, Clearwater, FL 33762