

SUBLEASE

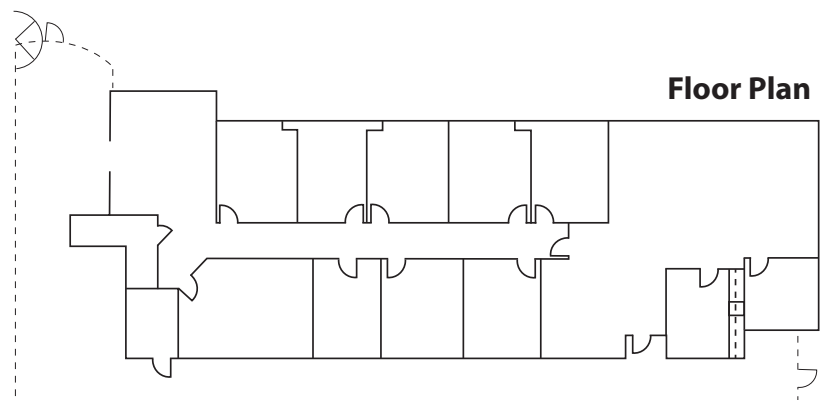
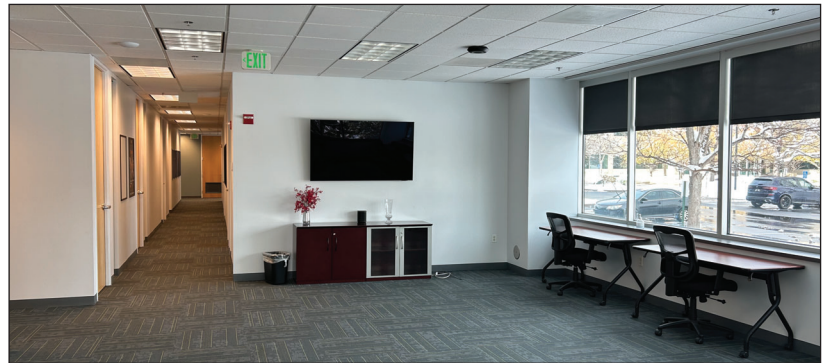
**10303 E Dry Creek Rd
Englewood, CO 80112
Inverness First Floor
\$18 PSF / 4.228 RSF**



Suite 110 at Summit at Dry Creek II is a premium first-floor office space located just steps away from the building's main entrance, providing excellent accessibility and convenience. Spanning approximately 4,228 rentable square feet, this suite is designed for executive and general office use, ideal for companies seeking a professional and welcoming environment. Tenants benefit from easy access to shared building amenities, including a fitness center with showers and lockers, a cafe, a tenant lounge, and a common conference room, all available on a first-come, first-served basis. This space combines functionality with prime location right off the main entry, making it an ideal choice for tenants prioritizing visibility and accessibility.

- 8 Private Offices
- 1 Conference Room
- Reception Area
- Break Area
- Bull Room

Lease Until October 1, 2027



Floor Plan

CONTACT

BILL COLANGELO

910 16th St, Suite 620 • Denver, CO, 80202 • 303 587 1031

bill@equitycommercialrealestategroup.com