

OFFERING: FOR SALE

WAREHOUSE | 8,300 SF
3-ACRES STABILIZED AND 5-UNIT LODGE



6049 TX-44
Alice, TX 78332

NEW SOUTHERN COMMERCIAL REAL ESTATE

Steven Saules | Agent
361-905-5000 (Direct)
steven@newsoutherncommercial.com
www.newsoutherncommercial.com

NS
NEW SOUTHERN
COMMERCIAL REAL ESTATE

EXECUTIVE SUMMARY

6049 TX-44, Alice, TX 78332

HIGHLIGHTS

- Asking \$675,000
- Located on TX-44 (Between US-281 and I-69)
- 8,300 SF Warehouse / 5-Unit Lodge
- Built in 2010-2015 by JL Construction
- 3.05-Acres Stabilized
- Level Topography with Ample Drainage
- (4) 12' Overheads
- Zoned Light Industrial

DETAIL

- Water - Located Along TX-44
- Sewer - Located Along TX-44
- Flood Zone - 0%
- Access - 250' LF on TX-44
- Location - Jim Wells County
- Tax Rate - \$2.052746
- ISD - Jim Wells



For Further Information:

Steven Saules | 361-905-5000 | steven@newsoutherncommercial.com

LOCAL MARKET

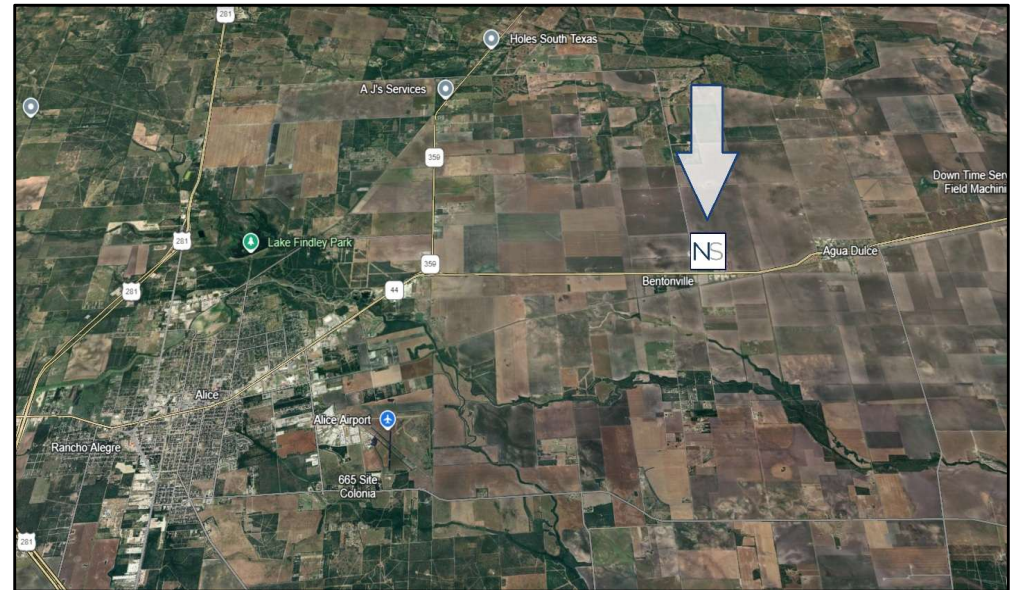
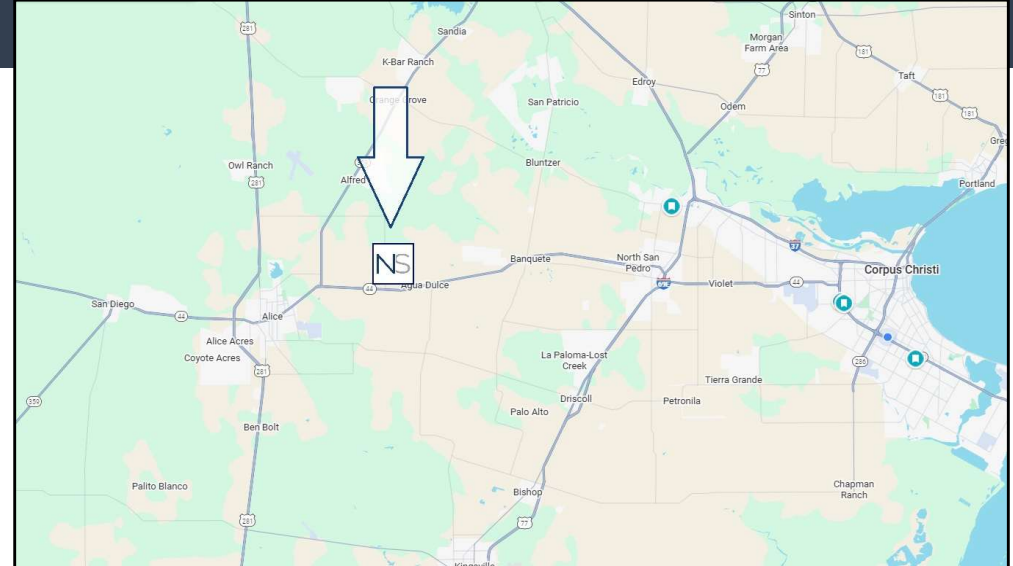
6049 TX-44, Alice, TX 78332

LOCATION

- Access to US-281 and I-69
- North side of TX-44, east of FM 2044; located 10-miles east of US-281 and 18-miles west of I-69 and Robstown
- 9,300 (2024) average annual daily traffic count along TX-44
- Ideal for oilfield tools and equipment; drilling/pipeline; energy services; trucking; equipment rental; distribution; tractor trailer, vacuum trucking; crane service, etc.

EMPLOYERS

- 14-miles north of new \$1.0 billion Tesla Lithium Refinery
- 33-miles west of Port or Corpus Christi (nation's largest U.S. port by total revenue tonnage)
- 34-miles northwest of new OXY carbon capture plant (phase 1 starting 2026)
- 36-miles southwest of \$2.0 billion Steel Dynamics Mill (1.2 million SF)



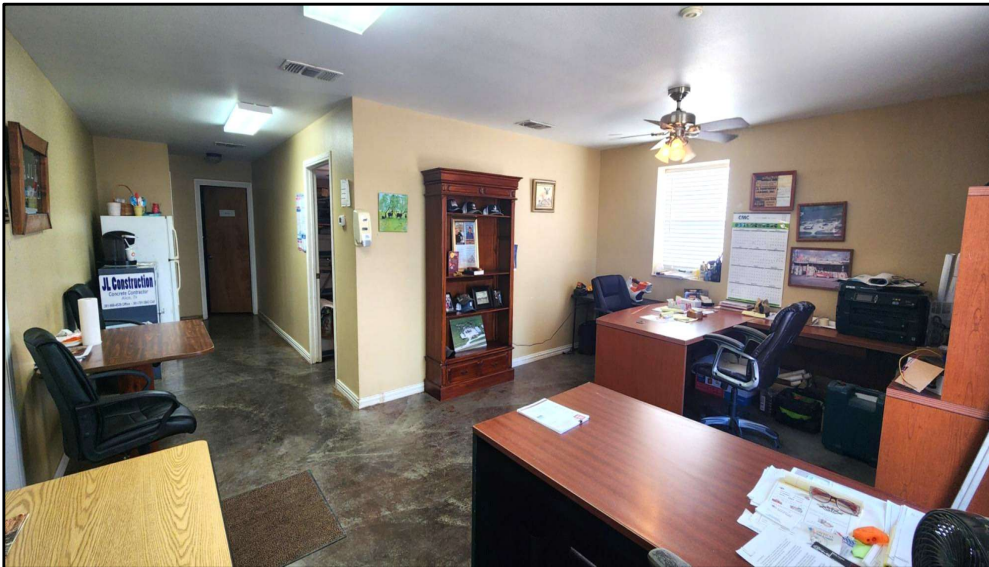
For Further Information:

Steven Saules | 361-905-5000 | steven@newsoutherncommercial.com

PROPERTY IMAGES

6049 TX-44, Alice, TX 78332

NS
NEW SOUTHERN
COMMERCIAL REAL ESTATE



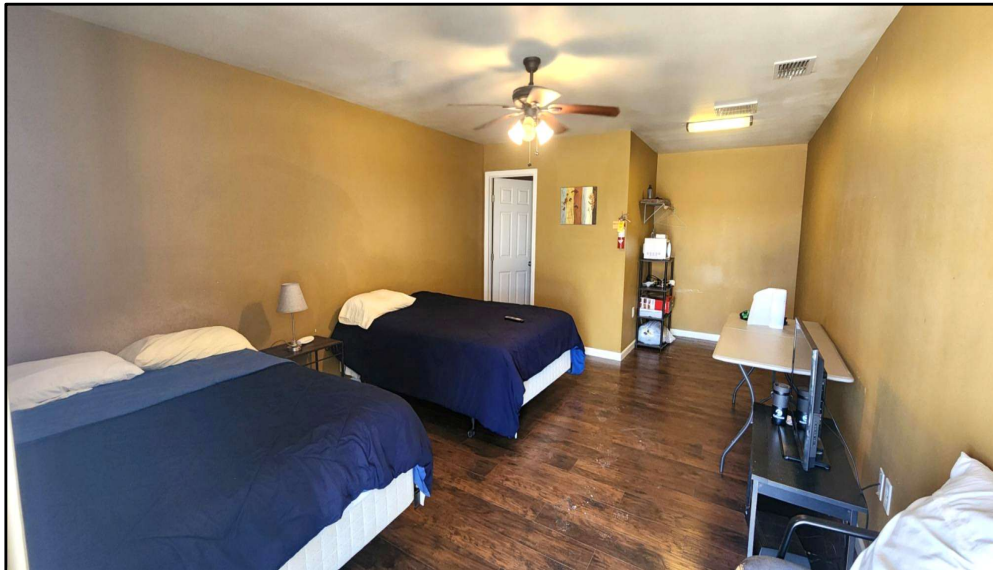
For Further Information:

Steven Saules | 361-905-5000 | steven@newsoutherncommercial.com

PROPERTY IMAGES

6049 TX-44, Alice, TX 78332

NS
NEW SOUTHERN
COMMERCIAL REAL ESTATE



For Further Information:

Steven Saules | 361-905-5000 | steven@newsoutherncommercial.com