

PALISADES PARK

6821 Palisades Park Court Fort Myers, FL 33912

FOR LEASE



- PREMISES:**
- Free standing medical office space
 - Occupancy February 1, 2026
 - 1 mile to Lee Health's Gulf Coast Medical Center
 - Ample parking in excess of medical code
 - Building signage available

SIZE: 10,860± SF

LEASE RATE: \$28.00 PSF + NNN (est. \$8.50 PSF)

ZONING: Approved for office and medical office uses

LOCATION: Conveniently located 1/2 mile south of the Daniels Pkwy and Six Mile Cypress Pkwy intersection with entry off of Six Mile Cypress and Plantation Road.

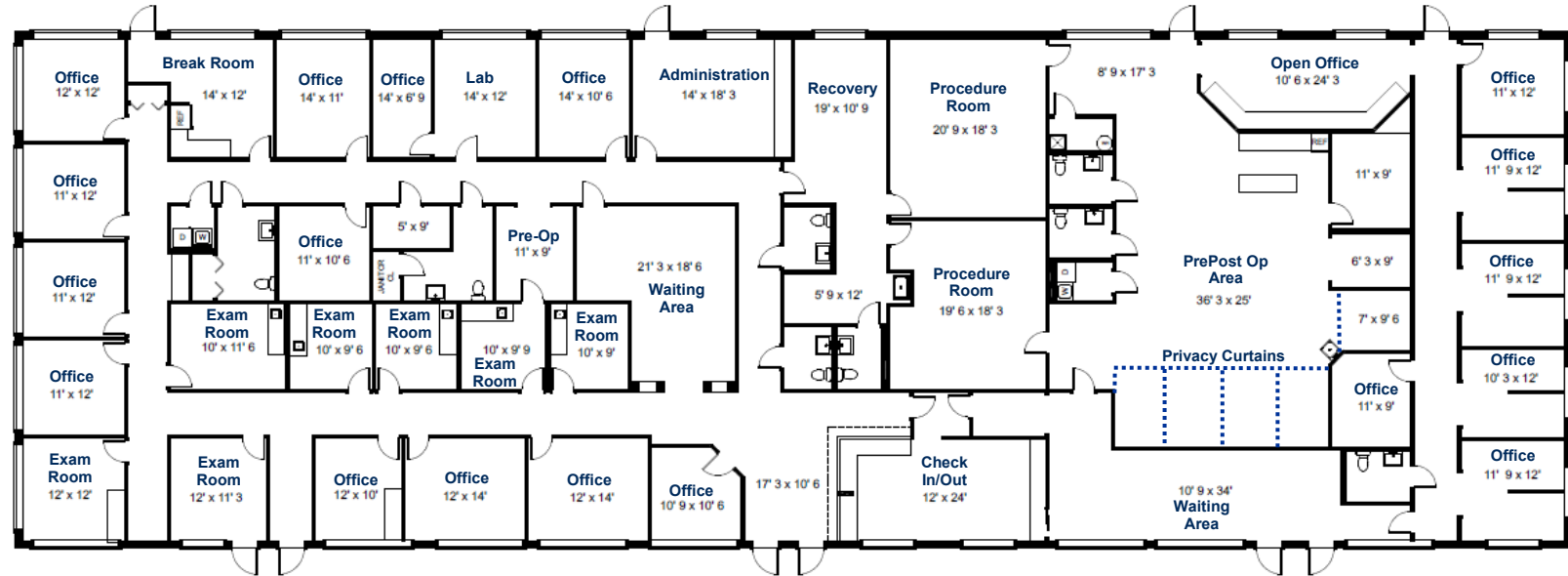


PREMIER
COMMERCIAL



PREMIER
COMMERCIAL

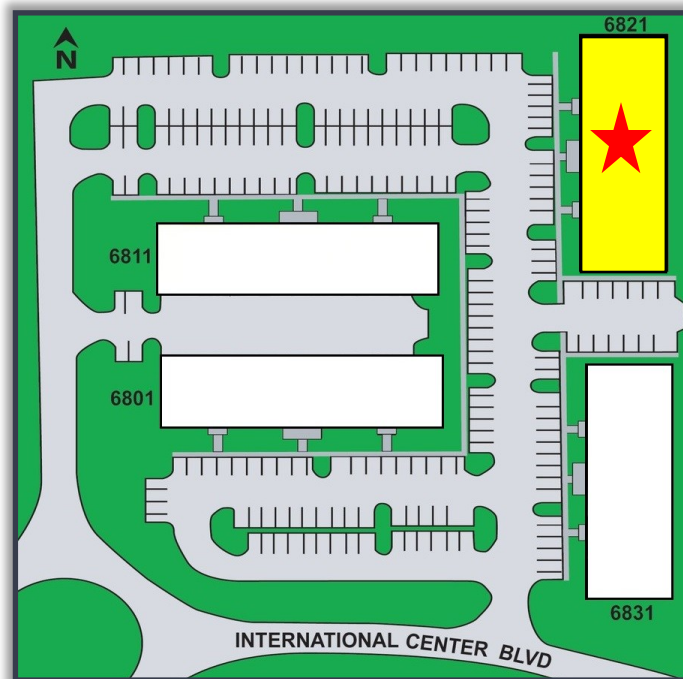
FLOOR PLAN



All information is deemed accurate but not guaranteed. Prices and availability subject to change without notice.

10,860± SF

LEASE RATE: \$28.00 PSF + NNN



CONTACT US:

Matthew Stepan, CCIM
Commercial Advisor
MattS@premiermail.net

WT Pearson
Broker Associate
WT@premiermail.net