

FOR LEASE

# 4350 LOCKHILL SELMA ROAD

SAN ANTONIO, TEXAS 78249



**BRYAN SETHNEY**  
Managing Director  
+1 210 305 4280  
bryan.sethney@cushwake.com

**MEREDITH MUECKE HOWARD**  
Director  
+1 512 804 9116  
meredith.howard@cushwake.com



**4350 LOCKHILL SELMA ROAD**  
San Antonio, Texas 78249



## **PROPERTY HIGHLIGHTS**

Located in the heart of the high-growth Northwest submarket, 4350 Lockhill Selma Road is positioned one mile inside Loop 1604 at DeZavala and ten minutes from San Antonio International Airport. The accessibility to IH-10, Loop 1604 and Hwy 281 make it an ideal location for employees to office. Additionally, 4350 Lockhill Selma Road offers close proximity to major retailers, 90 restaurants and a variety of services.

**RENTAL RATE:** \$19.00 NNN

## **FULL 40,000 SF FLOOR AVAILABLE NOW**

### **BUILDING FEATURES**

- Class A Office
- Building Size: 116,545 SF
- Parking: 639 Surface Spaces; 5.5:1,000 SF
- Monument Signage Available
- TPO, LEED Approved Roof
- B-2 General Business District Zoning
- 30' Column Spacing

# 4350 LOCKHILL SELMA ROAD

San Antonio, Texas 78249



## SPACE AVAILABLE

Space	Space Use	Lease Rate	Lease Type	Size (SF)
Suite 100	Office Building	\$19.00/SF/Yr	NNN	11,165 SF
Suite 110	Office Building	\$19.00/SF/Yr	NNN	5,671 SF
Suite 155	Office Building	\$19.00/SF/Yr	NNN	7,139 SF
Suite 160	Office Building	\$19.00/SF/Yr	NNN	3,928 SF
Suite 250	Office Building	\$19.00/SF/Yr	NNN	29,040 SF
Suite 300	Office Building	\$19.00/SF/Yr	NNN	40,361 SF



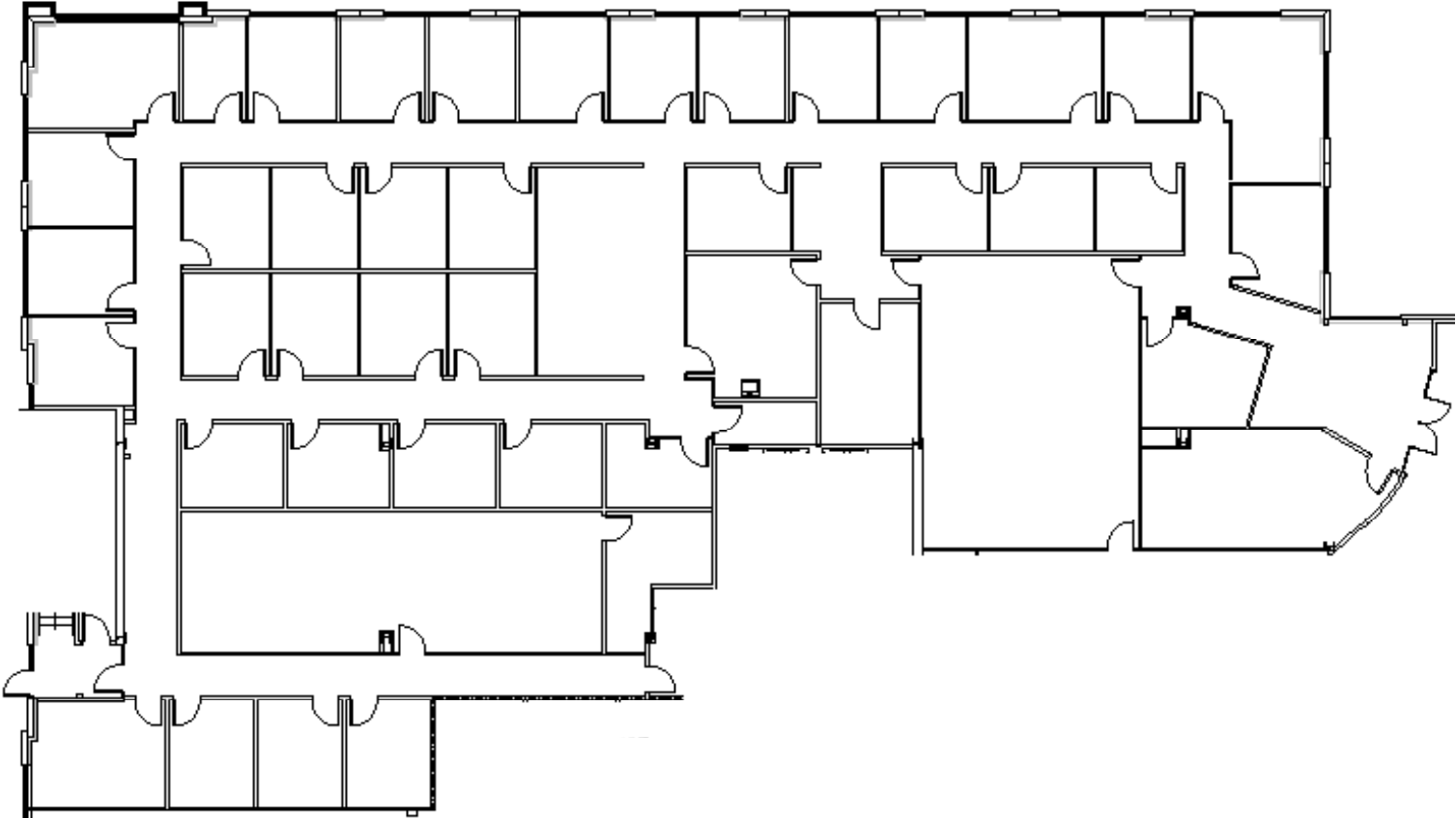
WATCH VIRTUAL TOUR

**4350 LOCKHILL SELMA ROAD**

San Antonio, Texas 78249



SUITE 100 - 11,165 SF

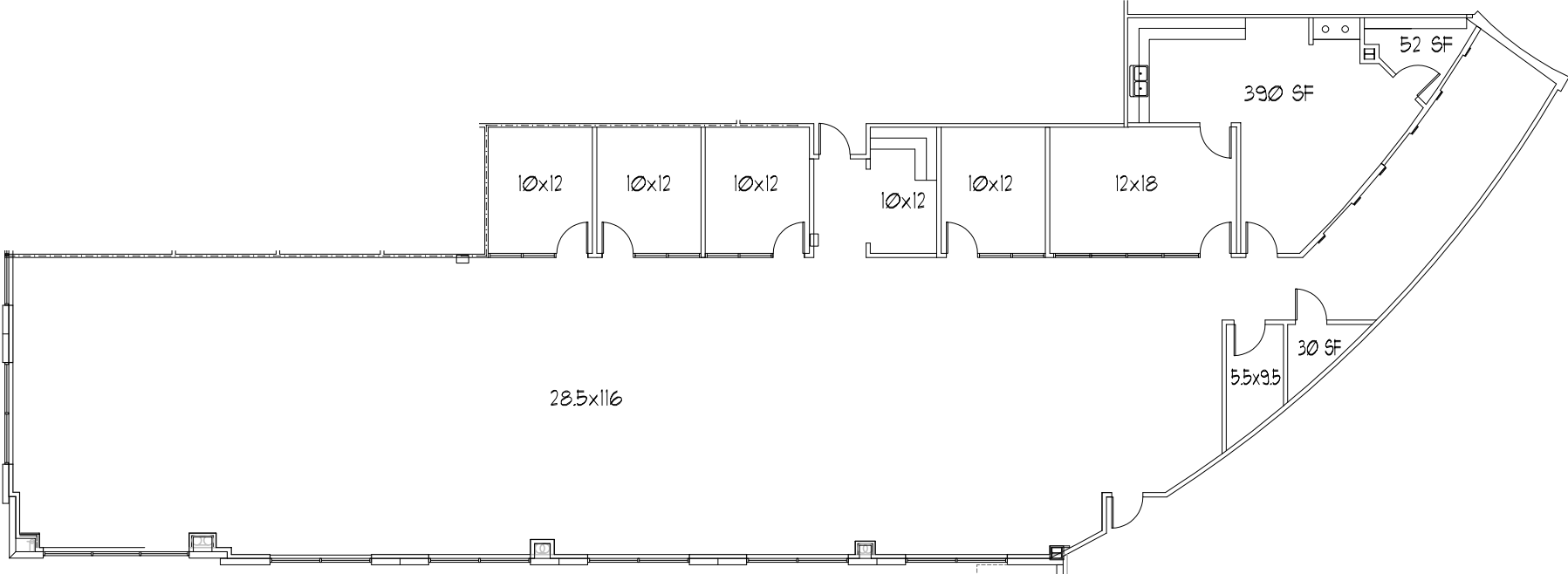


# 4350 LOCKHILL SELMA ROAD

San Antonio, Texas 78249



SUITE 110 - 5,671 SF

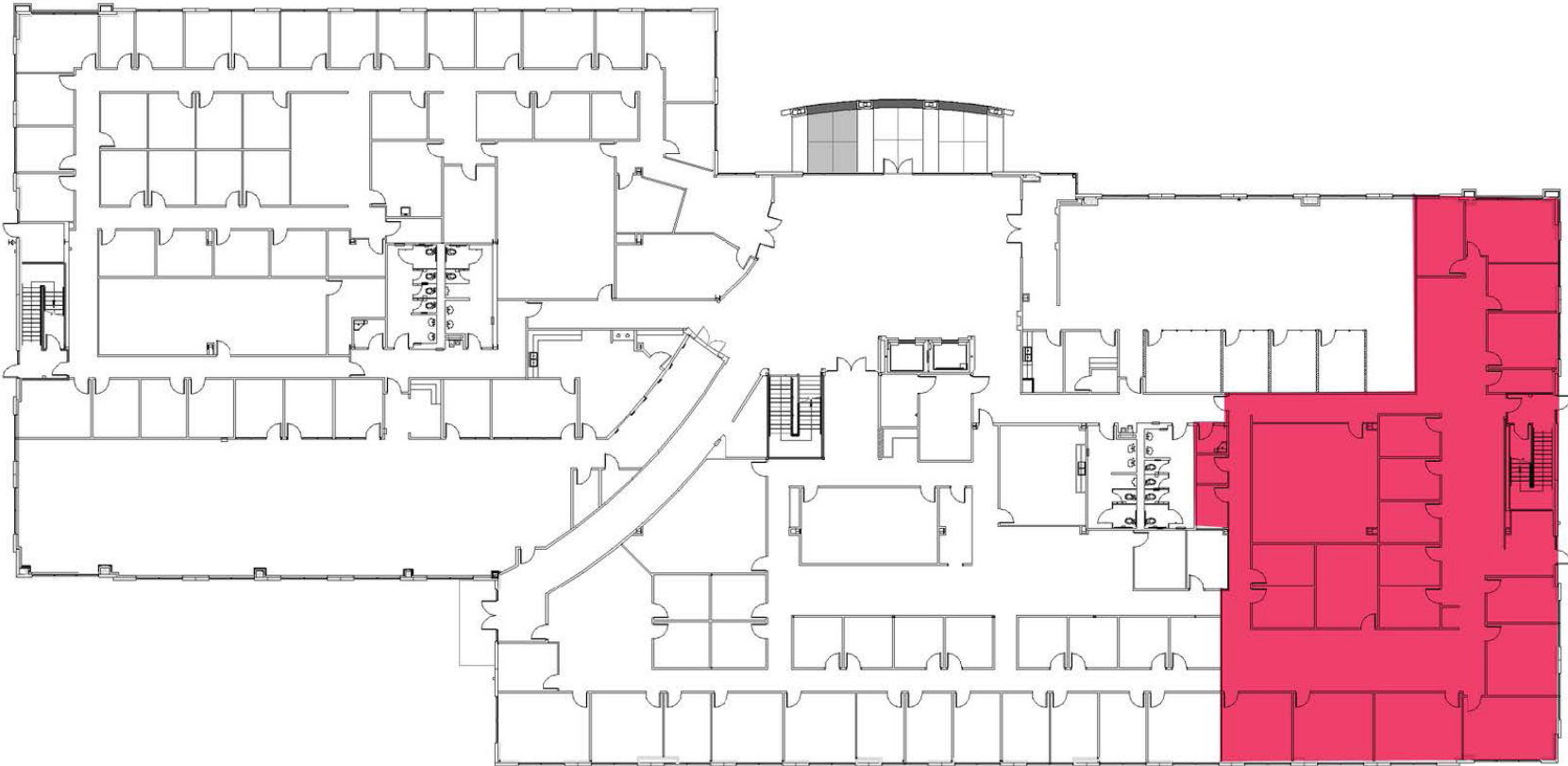


# 4350 LOCKHILL SELMA ROAD

San Antonio, Texas 78249



SUITE 155 - 7,139 SF

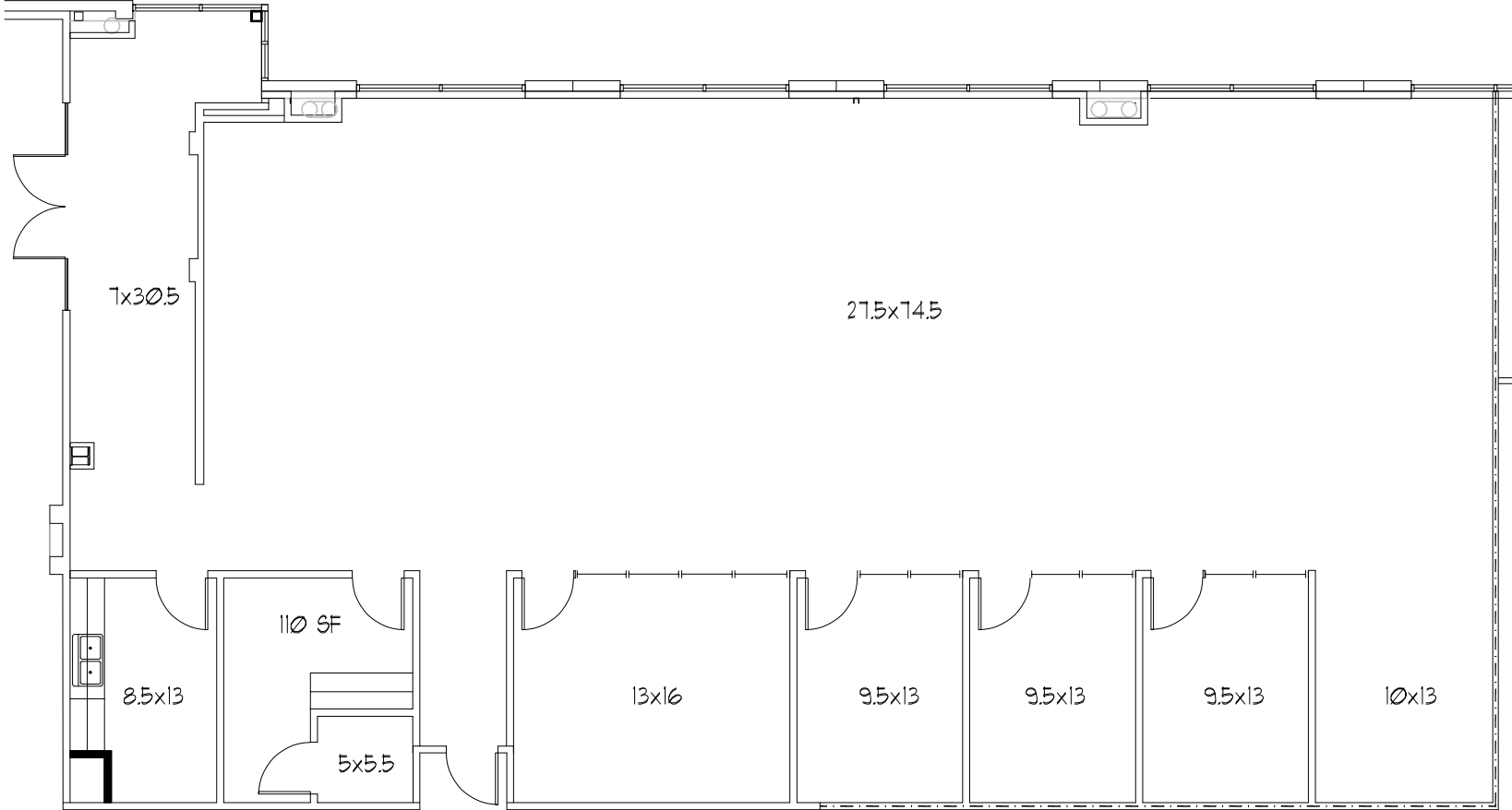


# 4350 LOCKHILL SELMA ROAD

San Antonio, Texas 78249



SUITE 160 - 3,928 SF

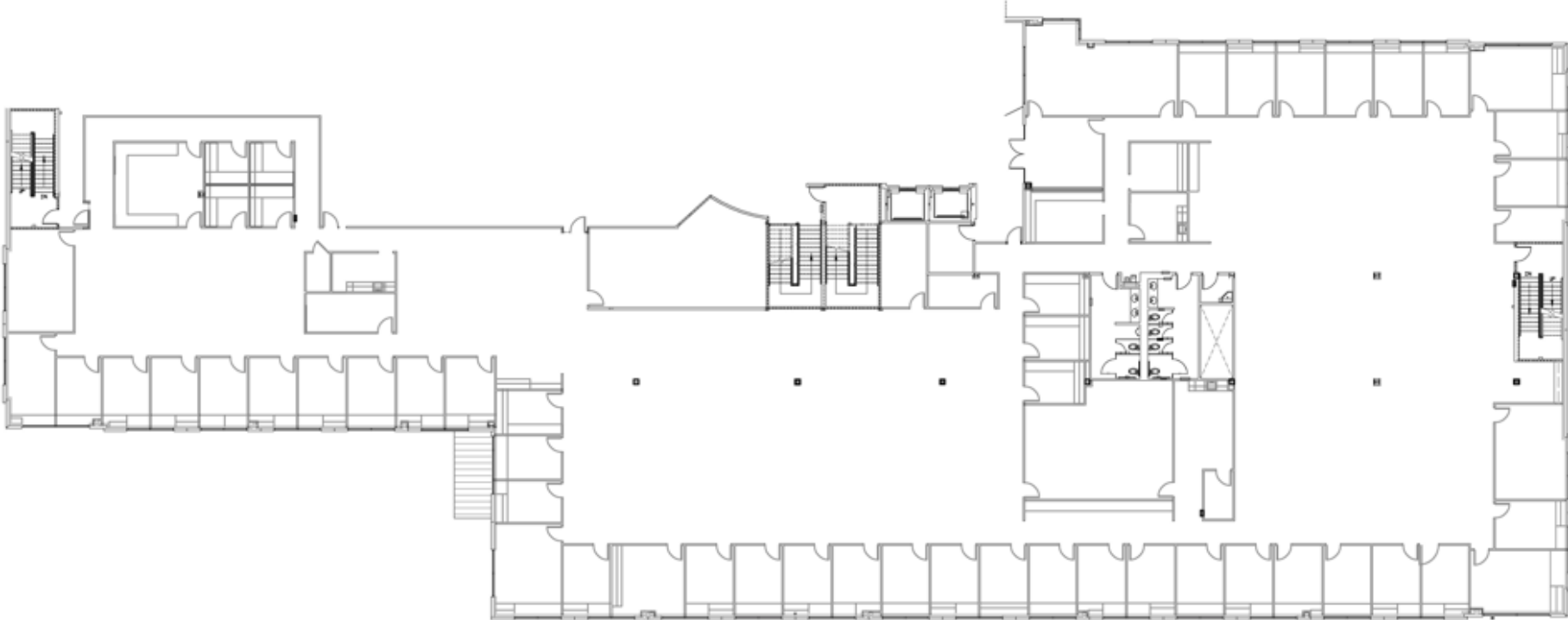


# 4350 LOCKHILL SELMA ROAD

San Antonio, Texas 78249



SUITE 250 - 29,040 SF

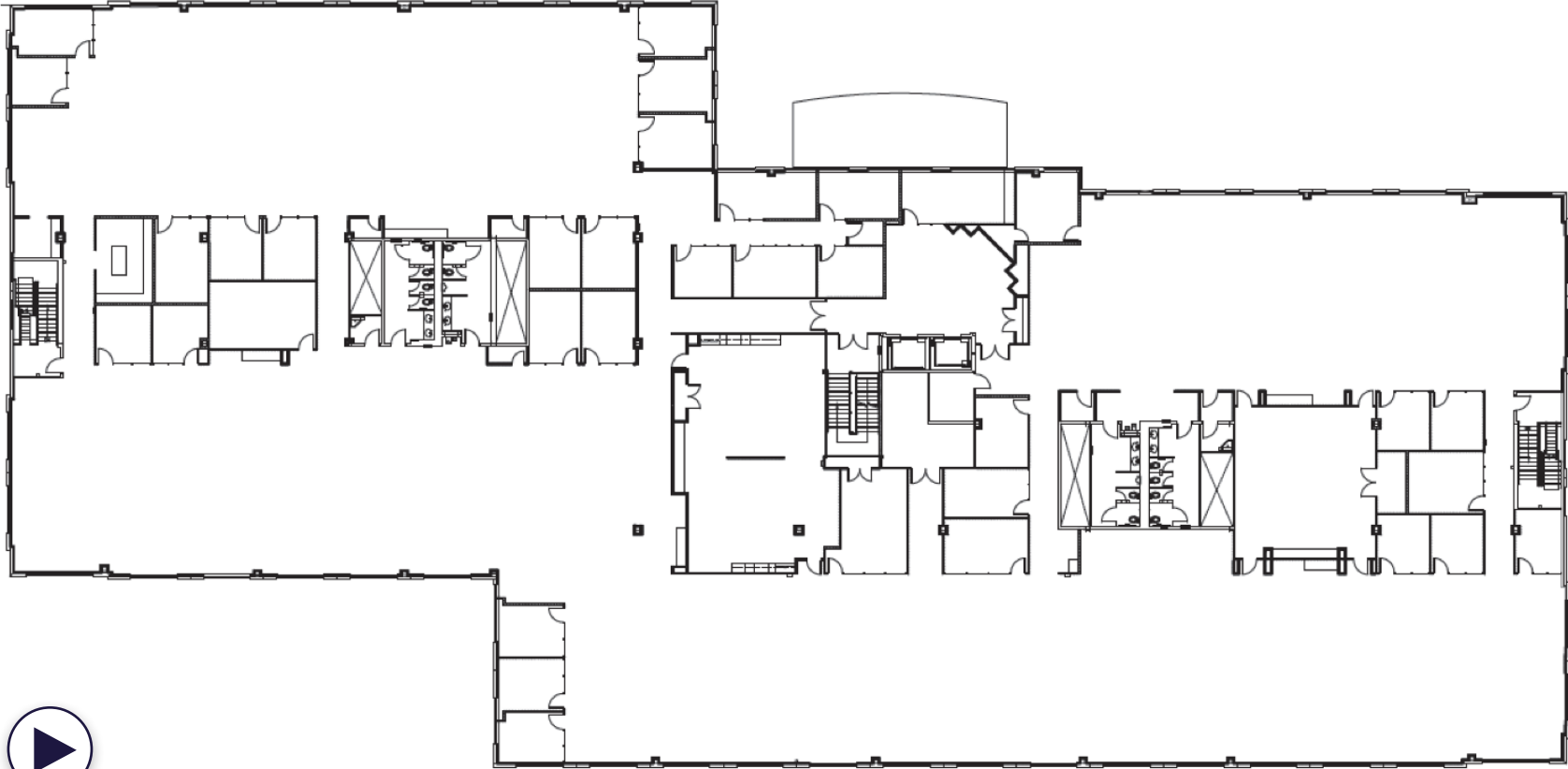




**4350 LOCKHILL SELMA ROAD**  
San Antonio, Texas 78249

**FLOOR  
PLAN**

**SUITE 300 - 40,361 SF**



WATCH VIRTUAL TOUR

# 4350 LOCKHILL SELMA ROAD

San Antonio, Texas 78249



## BUSINESSES

- 1 Walmart Neighborhood Market
- 2 Best Buy Outlet
- 3 Marshalls
- 4 H-E-B
- 5 The Home Depot
- 6 PetSmart
- 7 Costco Wholesale
- 8 Walmart Supercenter
- 9 Sam's Club
- 10 Target
- 11 Lowe's Home Improvement
- 12 The Rim
- 13 DICK'S Sporting Goods
- 14 Dollar Tree
- 15 T.J. Maxx & HomeGoods
- 16 Best Buy

## HOTELS

- 1 Aloft San Antonio UTSA Area
- 2 Sleep Inn & Suites at Six Flags
- 3 Comfort Inn & Suites Near Six Flags & Medical Center
- 4 SureStay Plus by Best Western San Antonio Fiesta Inn
- 5 Drury Inn & Suites San Antonio
- 6 Embassy Suites by Hilton San Antonio Landmark

## RESTAURANTS

- 1 Outback Steakhouse
- 2 McDonald's
- 3 Five Guys
- 4 Chick-fil-A
- 5 Whataburger
- 6 IHOP
- 7 Krispy Kreme

## POINTS OF INTEREST

- 1 UT Health De Zavala
- 2 Gorrell Park
- 3 University of Texas at San Antonio
- 4 Six Flags Fiesta Texas
- 5 Topgolf San Antonio
- 6 Planet Fitness



**FOR MORE INFORMATION, PLEASE CONTACT:**

**BRYAN SETHNEY**  
Managing Director  
+1 210 305 4280  
[bryan.sethney@cushwake.com](mailto:bryan.sethney@cushwake.com)

**MEREDITH MUECKE HOWARD**  
Director  
+1 512 804 9116  
[meredith.howard@cushwake.com](mailto:meredith.howard@cushwake.com)



©2024 Cushman & Wakefield. All rights reserved. The information contained in this communication is strictly confidential. This information has been obtained from sources believed to be reliable but has not been verified. NO WARRANTY OR REPRESENTATION, EXPRESS OR IMPLIED, IS MADE AS TO THE CONDITION OF THE PROPERTY (OR PROPERTIES) REFERENCED HEREIN OR AS TO THE ACCURACY OR COMPLETENESS OF THE INFORMATION CONTAINED HEREIN, AND SAME IS SUBMITTED SUBJECT TO ERRORS, OMISSIONS, CHANGE OF PRICE, RENTAL OR OTHER CONDITIONS, WITHDRAWAL WITHOUT NOTICE, AND TO ANY SPECIAL LISTING CONDITIONS IMPOSED BY THE PROPERTY OWNER(S). ANY PROJECTIONS, OPINIONS OR ESTIMATES ARE SUBJECT TO UNCERTAINTY AND DO NOT SIGNIFY CURRENT OR FUTURE PROPERTY PERFORMANCE.