

460 West 35th Street

South Side of West 35th Street between 9th and 10th Avenues



WE ARE PLEASED TO OFFER THE FOLLOWING SPACE FOR LEASE:

Space:	Ground Floor: 2,637 sq. ft. Second Floor: 2,300 sq. ft.
Asking Rent:	Upon Request
Frontage:	25 ft. on West 35th Street
Ceiling Height:	Ground Floor: 11 ft. Second Floor: 12-15 ft.
Possession:	Immediate
Neighbors:	Four Points By Sheraton, Javitz Center, Kyma, Fresh & Co., Chase Bank
Comments:	<ul style="list-style-type: none">• Spaces can be leased together or seperately• All uses considered• Column free space with heavy floorloads and drive-in bay
Neighborhood Highlights:	<ul style="list-style-type: none">• Located steps from the newly developed Hudson Yards office district and retail shops• Vibrant neighborhood

Matthew Gorman

212.251.0626

mgorman@aspire-associates.com

Christopher Bruggers

212.644.5015

cbruggers@aspire-associates.

Exclusive Agent

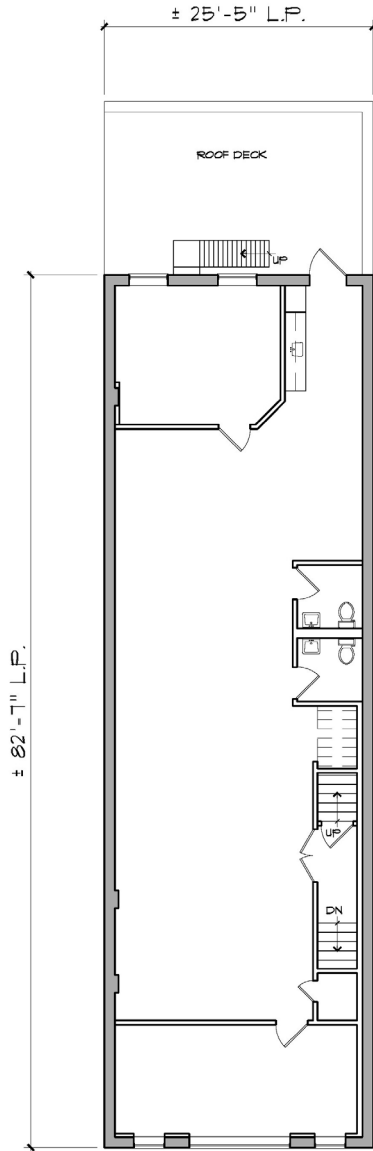
ASPIRE
ASSOCIATES

Aspire Associates LLC - Licensed Real Estate Broker

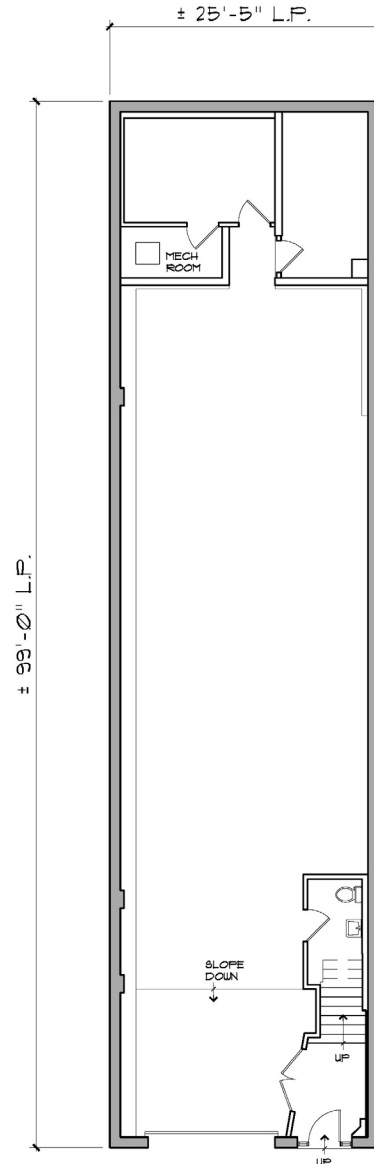
The information is from sources deemed reliable, however, we have not verified its accuracy, and make no representation about it. It is submitted subject to the possibility of errors, omissions, change of price, rental or other conditions, prior sale, lease or financing, or withdrawal without notice.

460 WEST 35TH STREET, NEW YORK, NY

South Side of West 35th Street between 9th and 10th Avenues



SECOND FLOOR PLAN



FIRST FLOOR PLAN

Matthew Gorman

212.251.0626

mgorman@aspire-associates.com

Christopher Bruggers

212.644.5015

cbruggers@aspire-associates.

Exclusive Agent

ASPIRE
ASSOCIATES

Aspire Associates LLC - Licensed Real Estate Broker

The information is from sources deemed reliable, however, we have not verified its accuracy, and make no representation about it. It is submitted subject to the possibility of errors, omissions, change of price, rental or other conditions, prior sale, lease or financing, or withdrawal without notice.