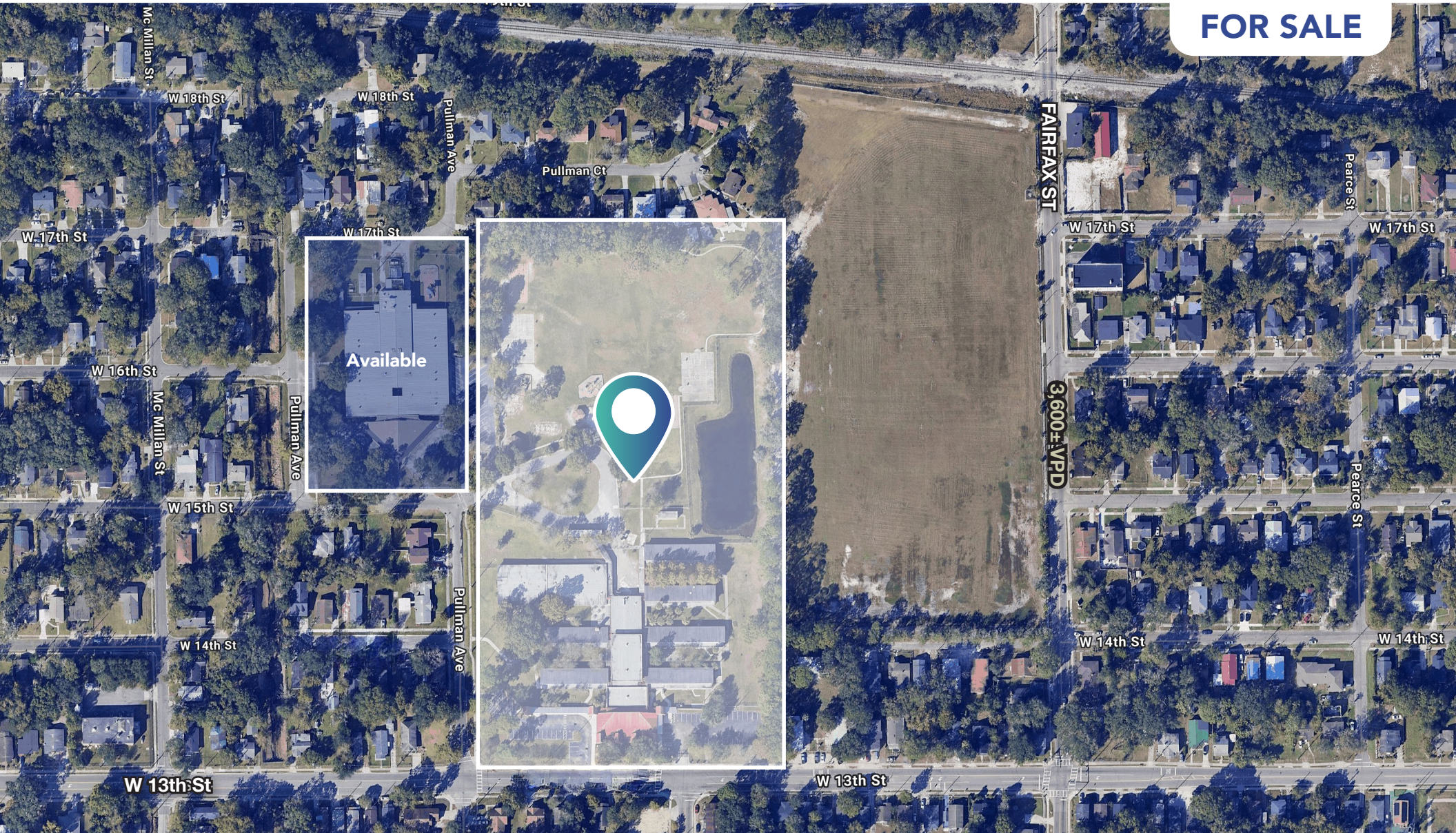


FORMER SUSIE E. TOLBERT SCHOOL

1925 W 13TH ST, JACKSONVILLE, FL 32209

FOR SALE



Clint Betlock
Senior Advisor
904.629.7541
Clint.Betlock@TrinityCRE.com

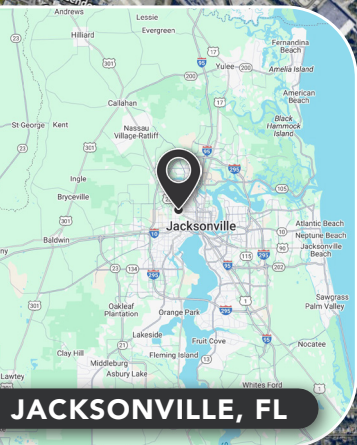
Rick Ikeler
Senior Advisor
239.334.3040
Rick.Ikeler@TrinityCRE.com

Anthony Gambino
Associate
239.334.3040
Anthony.Gambino@TrinityCRE.com

Scott Mersinger
Senior Advisor
239.334.3040
Scott.Mersinger@TrinityCRE.com

FORMER SUSIE E. TOLEBERT SCHOOL

1925 W 13TH ST, JACKSONVILLE, FL 32209



2025 DEMOGRAPHICS

1925 W 13TH ST



AVERAGE H.H INCOME

1 MILE	3 MILE	5 MILE
\$44,262	\$59,825	\$75,690



POPULATION

1 MILE	3 MILE	5 MILE
15,521	94,806	180,770



EMPLOYMENT DENSITY

1 MILE	3 MILE	5 MILE
3,168	80,632	133,969

PROPERTY FEATURES

PRICE Call for Details

AVAILABLE Acreage: 11.99 Acres
Building: 42,023 SF

BUILDING CONDITION Deferred maintenance. Building components might require improvement and/or replacement including but not limited to mechanical, electrical, plumbing, roof, hvac, etc. (As-is*)

ZONING PBF

LOCATION This site is on W 13th St near I-95, surrounded by established residential neighborhoods.



TrinityCRE.com

12574 Flagler Center Blvd • Suite 101 • Jacksonville, FL 32258

© 2025 Trinity Commercial Group

This information is considered accurate, but not guaranteed.

MEMBER OF:

