



FOR LEASE



1830 MAIN STREET SUITE 102

2nd-Generation Retail Space

1,040 SF | \$25 psf

1830 Main Street, Washougal, WA 98671

- 1,040 SF of Retail Space Available
- Relax, grab a cup of coffee, read the newspaper, shop at local merchants, enjoy a meal, listen to live music in the courtyard, stroll along the river trail, or visit local farmers market

WILLIAM AMORIN

Associate Broker | Licensed in WA

360.931.0584 | william@capacitycommercial.com

TAMARA J. FULLER, CCIM

Senior Vice President | Licensed in WA

360.946.4832 | tamara.fuller@capacitycommercial.com

ERIC ANDERSON

Senior Vice President | Licensed in WA

360.946.4831 | eric@capacitycommercial.com



PROPERTY SUMMARY



FOR LEASE

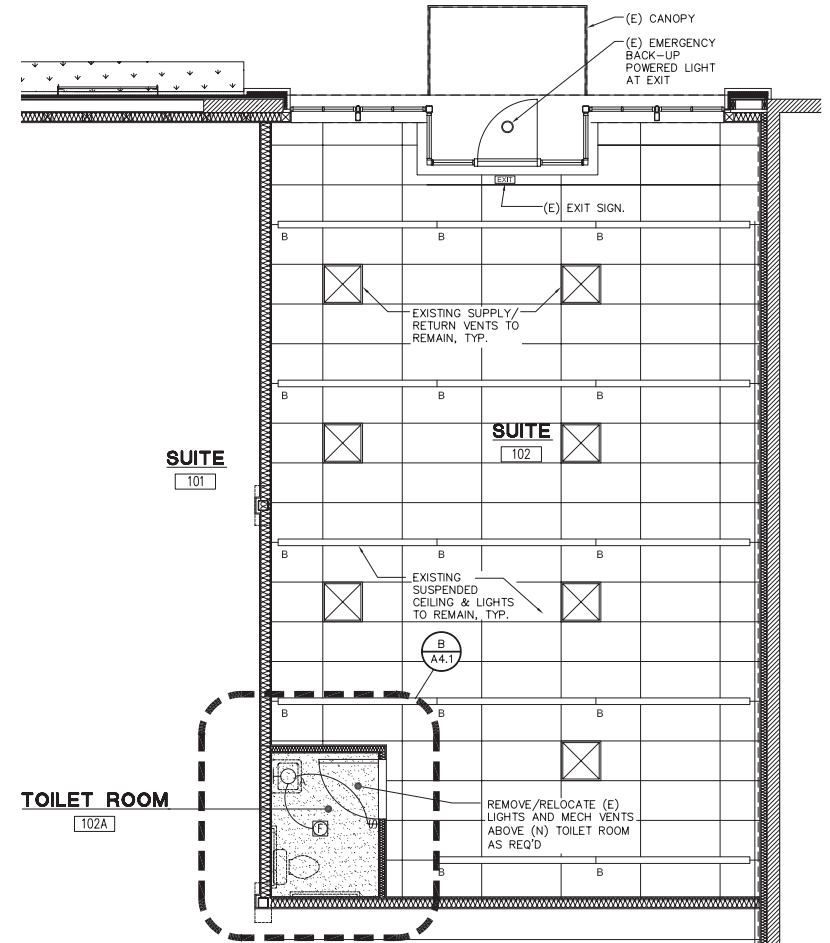
Location Features

- Located in Downtown Washougal, Washington
- Street Frontage Available
- Waterfront Pathway

Nearby Highlights

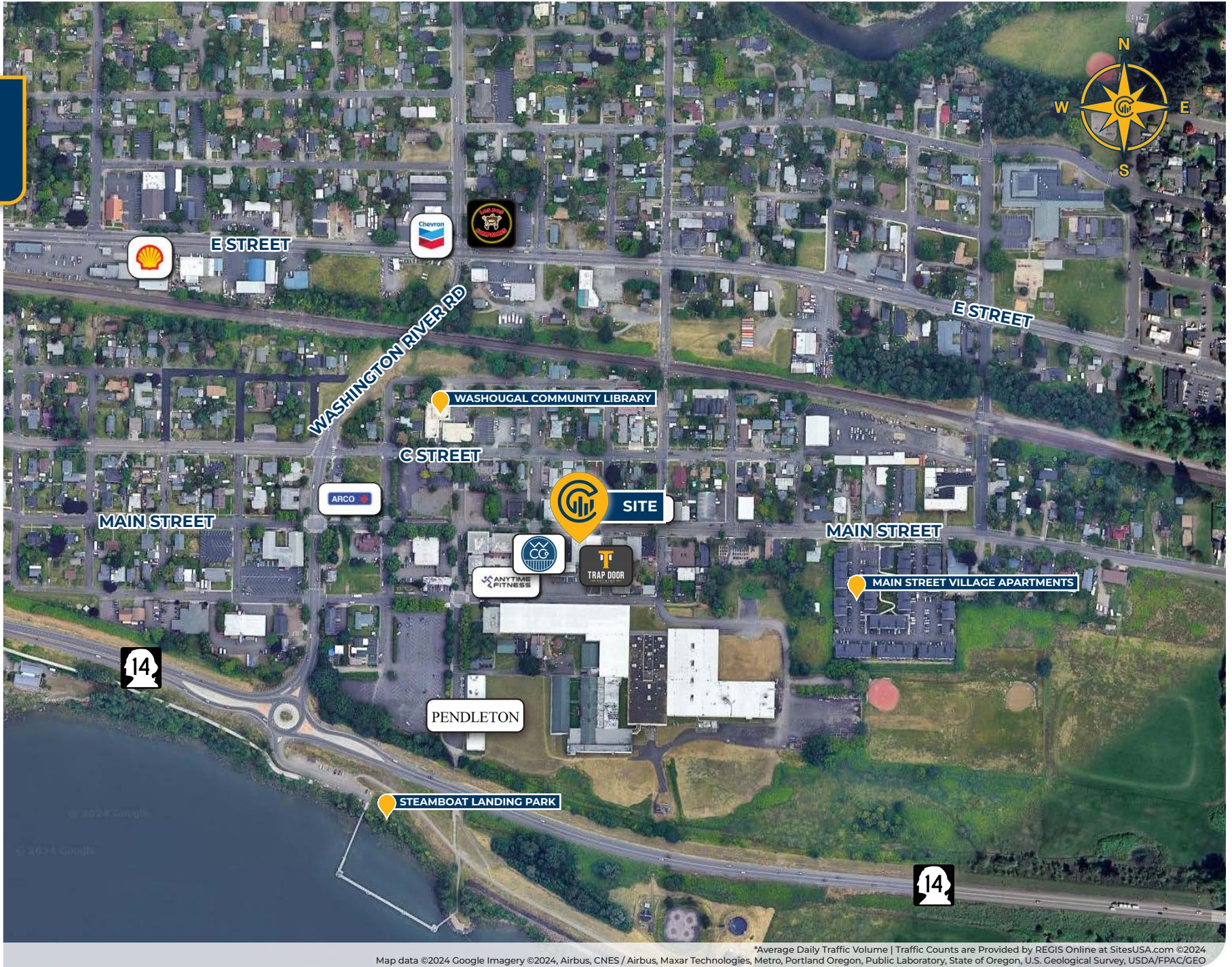
- Asaka Sushi Bar & Cocktail Lounge
- Evergreen Marketplace
- Forest Moon Yoga
- Danglicious
- Los Dos Compadres II
- Miere Catering
- Parker's Landing
- Waterfront
- Pendleton
- Smeads Pub
- Steamboat Landing Park
- Trap Door Brewing
- Washougal Coffee Co
- Washougal Community Library

PROPERTY DETAILS	
Address	1830 Main Street, Washougal, WA 98671
Available Space	1,040 SF
Suite	102
Lease Rate	\$25 psf
Use Type	Retail
Availability	Fall 2024





LOCAL AERIAL MAP



Map data ©2024 Google Imagery ©2024, Airbus, CNES / Airbus, Maxar Technologies, Metro, Portland Oregon, Public Laboratory, State of Oregon, U.S. Geological Survey, USDA/FPAC/GEO *Average Daily Traffic Volume | Traffic Counts are Provided by REGIS Online at SitesUSA.com ©2024